

Certified, Filed and or Recorded on  
Sep. 22, 2009 AT 12:22PM

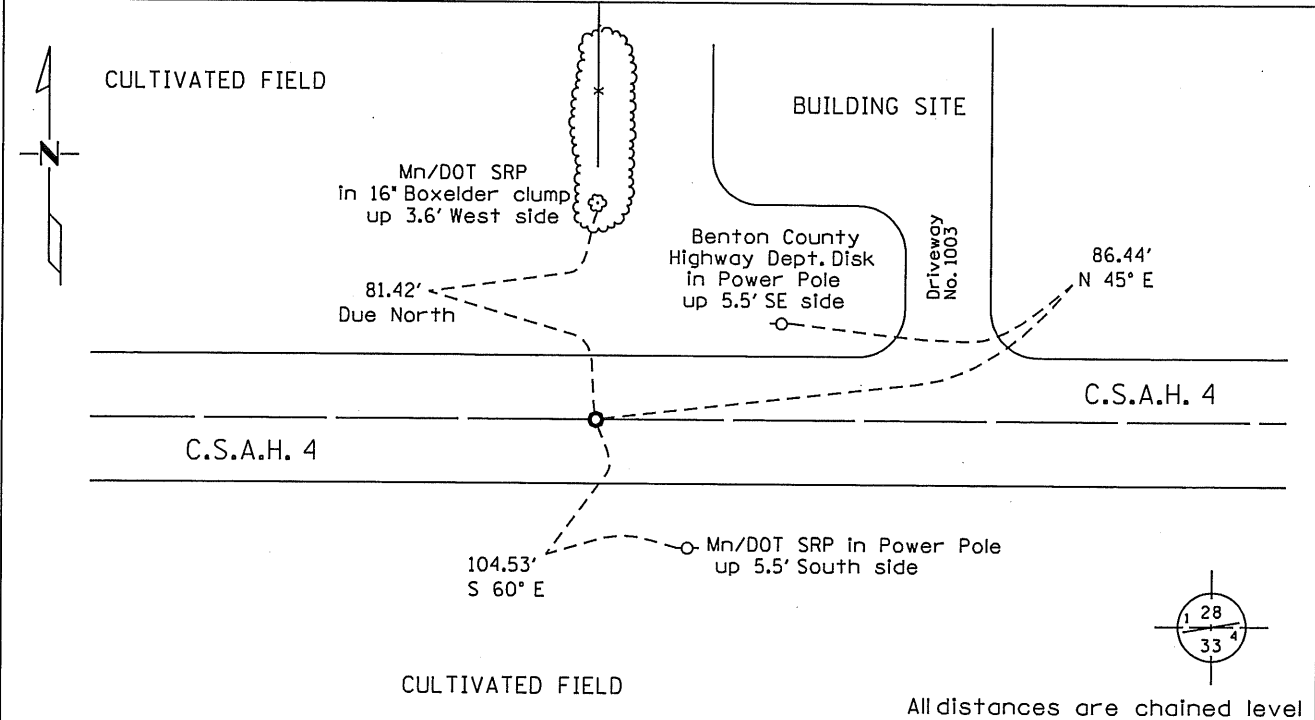
Signed: BW  
MARILYN J NOVAK G V I  
BENTON COUNTY MINNESOTA  
MARILYN J NOVAK  
COUNTY RECORDER  
Fee Amount: \$46.00

# CERTIFICATE OF LOCATION OF GOVERNMENT CORNER

North Quarter Corner of Section 33, Township 37, Range 29  
4TH Principal Meridian, State of Minnesota, County of Benton

At the corner location shown on the sketch:

- On 09-09-09 found a Cast Iron Monument  
DATE
- left monument as found     lowered monument     removed monument (explain)
- On \_\_\_\_\_ placed a \_\_\_\_\_  
DATE



Statement of evidence for this corner location is on back of this page.

I hereby certify that this document was researched and prepared by me or under my direct supervision.

Signature Kevin J. Metz Date 9-10-2009 License No. 40343  
 Title:  Land Surveyor MNDOT     Professional Engineer     County Surveyor     County Engineer

Statement of Evidence:**North Quarter Corner of Section 33, Township 37 North, Range 29 West, Gilmanton Township, 4<sup>th</sup> Principal Meridian, Benton County, Minnesota.**

- 1855 Oscar F. Davis ran the original public survey and a wood post was set with bearing trees noted as:
- |              |        |          |
|--------------|--------|----------|
| 7" Black Ash | N 69 E | 12 links |
| 7" Black Ash | S 54 W | 18 links |
- 1912 County Engineer's Notebook 1, pages 33-37 contains road survey by M. J. Cleveland for SR No. 10. Notes show no stake found at occupation lines north and south. Stationing gives distances of 2691 feet to the Northwest Corner of Section 33 and 2727 feet to the Northeast Corner of Section 33.  
(Also Engineer's Notebook 2, page 23)
- 1935 County Engineer's Notebook No. 87 contains a road survey for SAR No. 4 running from east to west. No corner is shown, but stationing shows  $\frac{1}{4}$  line fence north-south at 2721.6 feet from the Northeast Corner of Section 33 and 2695.5 feet from the Northwest Corner of Section 33.
- 2001 Westwood Professional Services, Inc. found a spike at the intersection of the centerline of an east-west road and a tree line north.
- 2003 Westwood Professional Services, Inc. found spike and measured 2688.13 feet to the Northwest Corner of Section 33 and 2719.60 feet to the Northeast Corner of Section 33. The spike was found to be 1.48 feet south and 15.72 feet west of the lost position.  
County Coordinates Obtained by GPS (for reference only):  
NAD 83 (1996 Adjustment)  
N- 137697.206  
E- 523849.078
- 2004 On June 9<sup>th</sup>, 2004, The Minnesota Department of Transportation found a 12-inch long spike on the centerline of County State Aid Highway No. 4, down 0.5 feet. That location and a lost location were searched. Nothing was found. The spike was removed and a MN/Dot cast iron monument was placed. Reference ties were established  
County Coordinates Obtained by GPS (for reference only):  
NAD 83 (1996 Adjustment)  
N- 137697.24  
E- 523849.00
- 2009 September 9<sup>th</sup>, 2009, The Minnesota Department of Transportation found a Mn/DOT Cast Iron Monument. Reference ties were verified as shown on the front of this document. The Minnesota Department of Transportation accepts the Mn/DOT Cast Iron Monument as the correct location of the North Quarter Corner of Section 33.

For details and survey analysis, contact the Minnesota Department of Transportation District Surveys Office in Baxter, Minnesota.