

A 374148

Certified, Filed and or Recorded on  
May 18, 2010 AT 03:02PM

Signed: CK

MARILYN J NOVAK G V I

BENTON COUNTY MINNESOTA

MARILYN J NOVAK

COUNTY RECORDER

## CERTIFICATE OF LOCATION OF GOVERNMENT CORNER

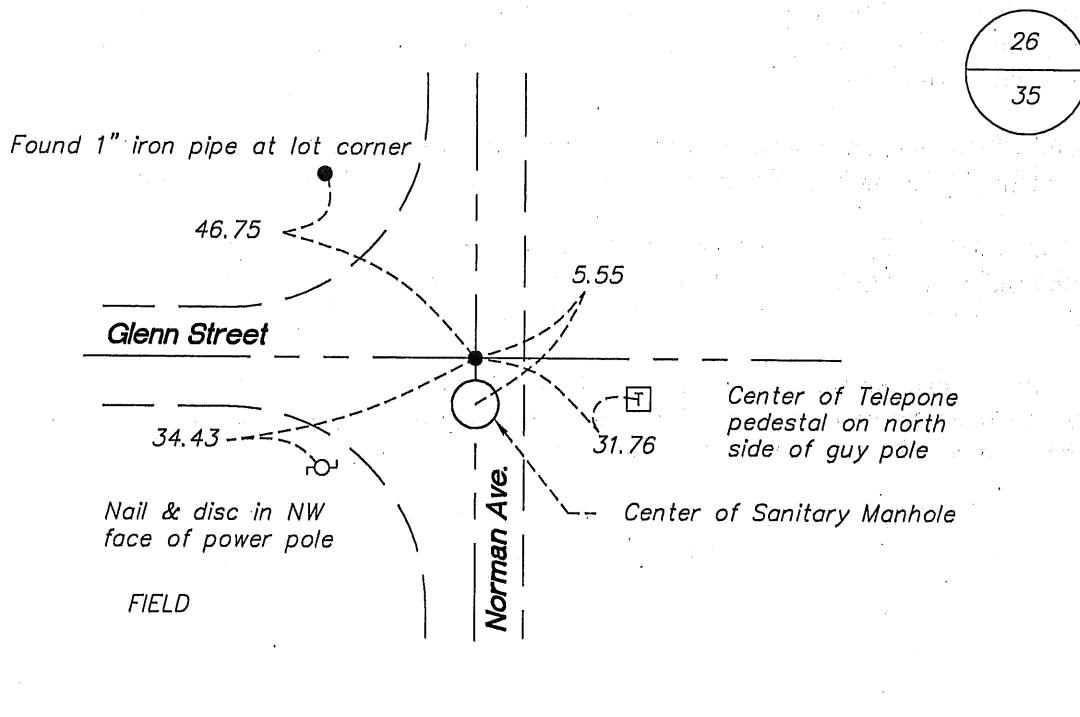
North Quarter Corner of Section 35, Township 37 North, Range 29 West, Fourth Principal Meridian, Benton County, Minnesota.

At this corner location shown on the sketch:

☒ On 5/14/2010 found a MN/DOT Cast Iron Monument

☒ left monument as found ☐ lowered monument ☐ removed monument (explain)

☐ On \_\_\_\_\_ placed an \_\_\_\_\_



Statement of evidence for this corner location is on back of this page.

I hereby certify that this document was researched and prepared by me or under my direct supervision and that I am a Licensed Land Surveyor under the laws of the State of Minnesota.

Signature [Signature]  
Deputy Benton County Surveyor  
License No. 45873

Date: 5/18/2010

Benton County Surveyor's Office  
 Nathan H. Carlson, Deputy County Surveyor  
 Minnesota License No. 45873

Page 1 of 2

**Statement of Evidence:**

**H351**

North Quarter Corner of Section 35, Township 37 North, Range 29 West, Gilmanton Township, 4<sup>th</sup> Principal Meridian, Benton County, Minnesota.

This corner is noted on the following recorded plats

<i>BRONDER ADDITION</i>	8/7/1989	Sidney Williamson	(RR Spike)
<i>HENRICKS ADDITION</i>	7/2/2001	Sidney Williamson	(RR Spike)
<i>FOLEY IMPROVEMENT PLAT</i>	5/6/1986	Sidney Williamson	Found Iron
<i>G &amp; D ADDITION</i>	3/15/1989	Paul Wellen	Found Iron
<i>PHEASANT GROVE ADDITION</i>	8/17/1988	Sidney Williamson	
<i>TOWN OF FOLEY</i>	2/23/1899	Felix Parent	
<i>AUDITORS PLAT SE 26-37-29</i>	12/21/1906	Felix Parent	
<i>FOLEY'S FIRST ADDITION</i>	9/27/1900	John Abercrombie	Iron

1855 Original US General Land Office survey set corner marked with a wood post with bearing trees noted as:  
       16" Blk Oak                S 16 ½ W        30 links  
       13" Linden                N 54 W        30 links

1898 County Road Book, page 141, shows road surveyed by Felix Parrent, County Surveyor, south and north from this corner.

1900 Plat of FOLEY'S FIRST ADDITION was surveyed by John Abercrombie and Felix Parent and corner is shown marked by a "patent butter roller" with an iron shaft through it and a pinion at the bottom with small stones around it.

1907 County Road Book, pages 2 and 3 contains a road survey by Felix Parent, County Surveyor, where road on quarter line from the south and terminated at this corner. Notes road to the west.

1912 County Engineer's Notebook 2, page 35 contains a road survey by Cleveland that shows road laid out south and north of this corner. He measured south 5228 feet to the South ¼ corner of Section 35 and 5286 feet north to the North ¼ corner of Section 26.

1915 County Surveyor's Record Book A, J.P. Soderstrum notes an iron in the centerline of roads on Map No. 16. In County Surveyor's Record Book, page 58, Soderstrum states: "found iron stake set by Abercrombie & Parent in 1900". (Engineer's notebook 12 gives distance of 2658' to NW corner.)

Undated County Surveyor's Record Book 1, page 529 the following reference ties:

14" Elm	NE	48.04
TP	SE	32.95
PP	SW	32.07

page 511, the following reference ties to an iron:

TP	NE	34.5
Guy Pole	SE	34.5
PP	SW	33.4
Iron (Lot Cor)	NW	46.65

1949 Lynn Carlson, MN/DOT, found a 1" X 2" wood hub over an iron monument. He set a pre-cast concrete monument with an aluminum cap and filed a Certificate. Ties:

14" Elm	NE	48.04
TP	ESE	32.95
PP	SW	32.07

Benton County Surveyor's Office  
 Nathan H. Carlson, Deputy County Surveyor  
 Minnesota License No. 45873

Page 2 of 2

Same information is shown on MN/DOT alignment map for TH 23.

MN/DOT alignment map for TH 25 shows corner marked by an iron axle with a distance of 2616.39 feet to the NW corner of Section 35 and ties:

PP	SE	34.61
NE corner of Bottom step	SW	70.25
Pipe	NW	46.65
TP	SE	33.32

1965 M.F. Carlson notes a found  $\frac{3}{4}$ " I.P. with the following reference ties.

7" Boxelder	NW	65.8
PP	SW	34.07
PP	SE	32.59

1967 County Highway notebook 1, page 46 lists ties to concrete monument:

Roy's I.P.	NW	46.65
PP	SW	34.65
TP	SE	33.3

1982 Paul Wellen's, LS 10461, records show an iron pin at the corner with a distance of 2632.43 feet to the NE corner of Section 35.

1983 Sidney Williamson, LS 10918, found a RR Spike in the centerline of a road north/south/west. He filed a Certificate of Location (#168503).

2003 Westwood Professional Services, Inc. found the RR spike. Measured 2615.74 feet to the NW corner.  
 County Coordinates Obtained by GPS  
 NAD 83 (1996 Adjustment)  
 N- 137599.410  
 E- 534477.733

2005 The Minnesota Department of Transportation found a railroad spike on the centerline of Norman Avenue and Glenn Street as described on Certificate of Location Document Number 168503. The railroad spike was destroyed during construction between the years 2003 and 2005. On December 21, 2005, The Minnesota Department of Transportation set a MNDOT Cast Iron Monument at the railroad spike location.

2010 Westwood Professional Services, Inc. found the MNDOT Cast Iron Monument. The Reference ties were established and coordinates from the 2003 railroad spike position were verified.

A 372443

Certified, Filed and or Recorded on  
Feb. 24, 2010 AT 01:02PM

Signed: CK

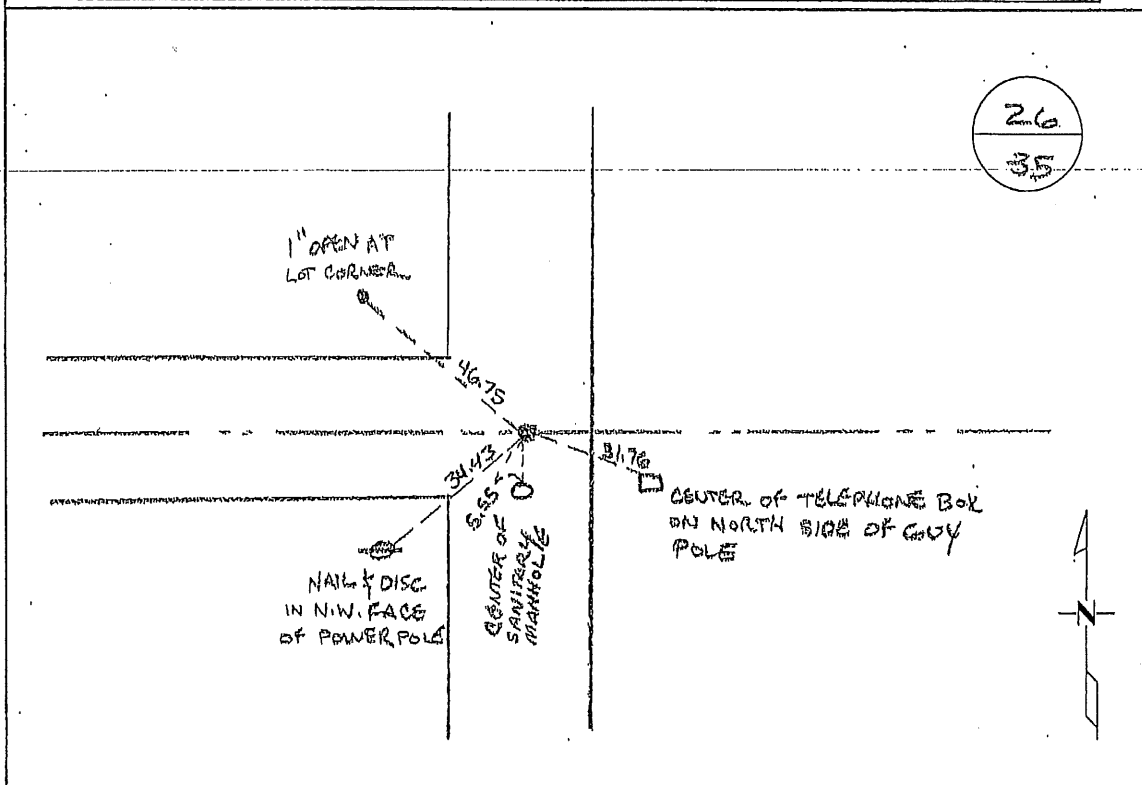
MARILYN J NOVAK G V I  
BENTON COUNTY MINNESOTA  
MARILYN J NOVAK  
COUNTY RECORDER

## CERTIFICATE OF LOCATION OF GOVERNMENT CORNER

North Quarter Corner of Section 35, Township 37 North, Range 29 West, Fourth Principal Meridian, Benton County, Minnesota.

At this corner location shown on the sketch:

- ☒ On 2/19/2010 found a RAILROAD SPIKE
- ☒ left monument as found ☐ lowered monument ☐ removed monument (explain)
- ☐ On \_\_\_\_\_ placed an \_\_\_\_\_



Statement of evidence for this corner location is on back of this page.

I hereby certify that this document was researched and prepared by me or under my direct supervision and that I am a Licensed Land Surveyor under the laws of the State of Minnesota.

Signature Beth H. Carlson  
Deputy Benton County Surveyor  
License No. 45873

Date: 2/12/2010

A 372443

Benton County Surveyor's Office  
 Nathan H. Carlson, Deputy County Surveyor  
 Minnesota License No. 45873  
 Page 1 of 2

Statement of Evidence:

H351

North Quarter Corner of Section 35, Township 37 North, Range 29 West, Gilmanton Township, 4<sup>th</sup>  
 Principal Meridian, Benton County, Minnesota.

This corner is noted on the following recorded plats

BRONDER ADDITION	8/7/1989	Sidney Williamson	(RR Spike)
HENRICKS ADDITION	7/2/2001	Sidney Williamson	(RR Spike)
FOLEY IMPROVEMENT PLAT	5/6/1986	Sidney Williamson	Found Iron
G & D ADDITION	3/15/1989	Paul Wellen	Found Iron
PHEASANT GROVE ADDITION	8/17/1988	Sidney Williamson	
TOWN OF FOLEY	2/23/1899	Felix Parent	
AUDITORS PLAT SE 26-37-29	12/21/1906	Felix Parent	
FOLEY'S FIRST ADDITION	9/27/1900	John Abercrombie	Iron

1855 Original US General Land Office survey set corner marked with a wood post with bearing trees noted as:

16" Blk Oak	S 16 ½ W	30 links
13" Linden	N 54 W	30 links

1898 County Road Book, page 141, shows road surveyed by Felix Parrent, County Surveyor, south and north from this corner.

1900 Plat of FOLEY'S FIRST ADDITION was surveyed by John Abercrombie and Felix Parent and corner is shown marked by a "patent butter roller" with an iron shaft through it and a pinion at the bottom with small stones around it.

1907 County Road Book, pages 2 and 3 contains a road survey by Felix Parent, County Surveyor, where road on quarter line from the south and terminated at this corner. Notes road to the west.

1912 County Engineer's Notebook 2, page 35 contains a road survey by Cleveland that shows road laid out south and north of this corner. He measured south 5228 feet to the South ¼ corner of Section 35 and 5286 feet north to the North ¼ corner of Section 26.

1915 County Surveyor's Record Book A, J.P. Soderstrum notes an iron in the centerline of roads on Map No. 16. In County Surveyor's Record Book, page 58, Soderstrum states: "found iron stake set by Abercrombie & Parent in 1900". (Engineer's notebook 12 gives distance of 2658' to NW corner.)

Undated County Surveyor's Record Book 1, page 529 the following reference ties:

14" Elm	NE	48.04
TP	SE	32.95
PP	SW	32.07

page 511, the following reference ties to an iron:

TP	NE	34.5
Guy Pole	SE	34.5
PP	SW	33.4
Iron (Lot Cor)	NW	46.65

1949 Lynn Carlson, MN/DOT, found a 1" X 2" wood hub over an iron monument. He set a pre-cast concrete monument with an aluminum cap and filed a Certificate. Ties:

14" Elm	NE	48.04
TP	ESE	32.95
PP	SW	32.07

2/22/2010

PAGE 2 OF 3

Benton County Surveyor's Office  
Nathan H. Carlson, Deputy County Surveyor  
Minnesota License No. 45873

Page 2 of 2

Same information is shown on MN/DOT alignment map for TH 23.

MN/DOT alignment map for TH 25 shows corner marked by an iron axle with a distance of 2616.39 feet to the NW corner of Section 35 and ties:

PP	SE	34.61
NE corner of Bottom step	SW	70.25
Pipe	NW	46.65
TP	SE	33.32

1965 M.F. Carlson notes a found  $\frac{3}{4}$ " I.P. with the following reference ties.

7" Boxelder	NW	65.8
PP	SW	34.07
PP	SE	32.59

1967 County Highway notebook 1, page 46 lists ties to concrete monument:

Roy's I.P.	NW	46.65
PP	SW	34.65
TP	SE	33.3

1982 Paul Wellen's, LS 10461, records show an iron pin at the corner with a distance of 2632.43 feet to the NE corner of Section 35.

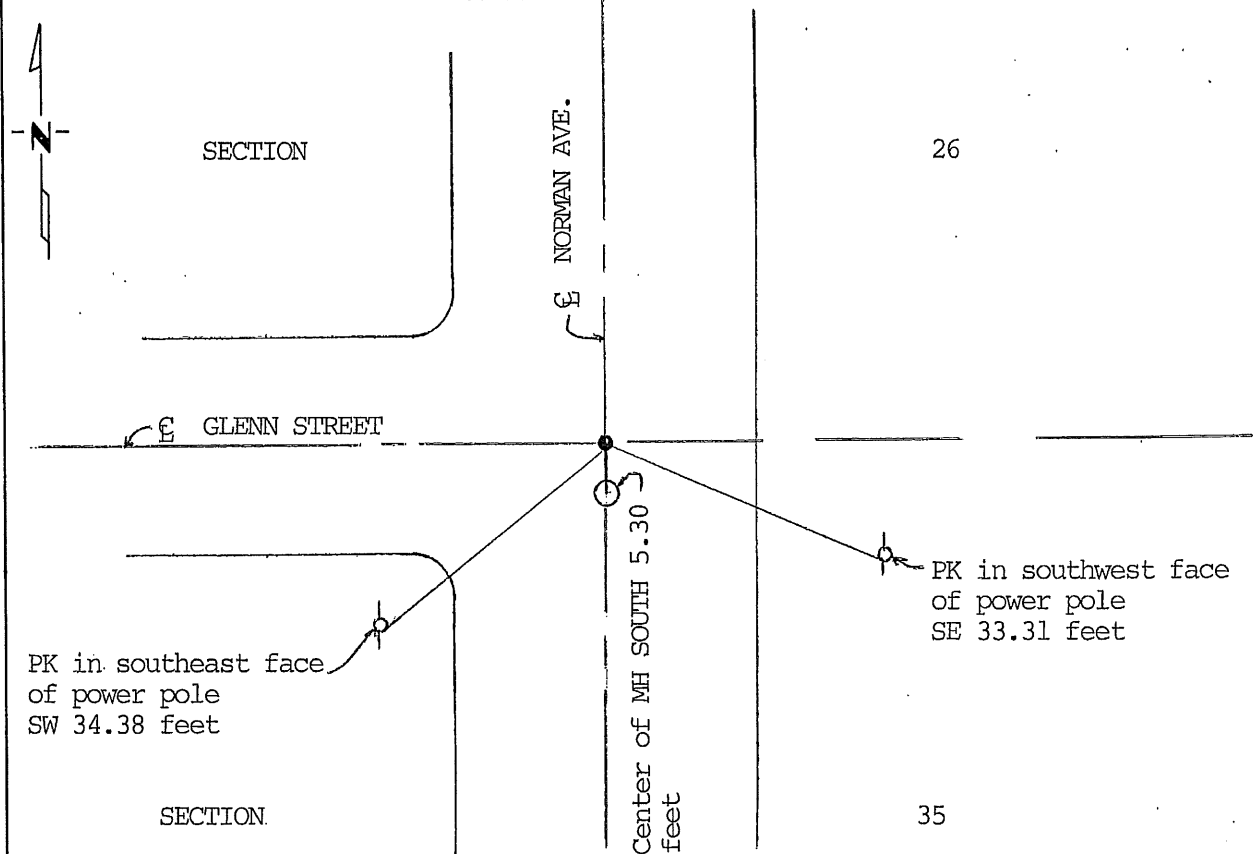
1983 Sidney Williamson, LS 10918, found a RR Spike in the centerline of a road north/south/west. He filed a Certificate of Location (#168503).

2003 Westwood Professional Services, Inc. found the RR spike. Measured 2615.74 feet to the NW corner.  
~~County Coordinates Obtained by GPS~~  
NAD 83 (1996 Adjustment)  
N- 137599.410  
E- 534477.733

2010 Westwood Professional Services, Inc. found a RR spike. Reference ties were established and coordinates from 2003 were verified.

**CERTIFICATE OF LOCATION OF GOVERNMENT CORNER**NORTH QUARTER \_\_\_\_\_ Corner of Section 35, Township 37 N., Range 29 W., 4th P.M.STATE OF MINNESOTA, County of BENTON

At the corner location shown on the sketch:

☒ On Dec 2, 1983 found a railroad spike in the centerlines of Norman Ave. & Glenn St.  
DATE☒ left monument as found, ☐ lowered monument, ☐ removed monument (explain)☐ On \_\_\_\_\_ placed a \_\_\_\_\_  
DATE**SKETCH OF REFERENCE TIES**

Statement of evidence relative to this corner location is on back of page.

I hereby certify that this document and the data contained herein was prepared by me or under my direct supervision.

Sidney F. Williamson 2/23/84  
SIGNATURE DATERegistration No. 10918☒ Land Surveyor, ☐ Professional Engineer☐ County Surveyor, ☐ County EngineerOFFICE OF THE County Recorder  
~~REGISTER OF DEEDS~~  
County of BentonI hereby certify that this document was filed in the Reg. of Deeds office at 4 P.M. on the 2nd day of March A.D., 1984Register of Deeds J.L. Johnson

By \_\_\_\_\_, Deputy

DOCUMENT NO. 168503

N 35

37-29

## CERTIFICATE OF REPLACING SECTION CORNER

Corner to Sec. <sup>26</sup><sub>15</sub> T. <sup>37 N</sup><sub>34</sub> R. <sup>20 W</sup><sub>20 W</sub>

State of Minnesota }  
County of Brainard } ss.

I hereby certify that on 30 day of August 1950

I found the N. quarter Corner of Sec. 26 - T. 37 N R. 20 W

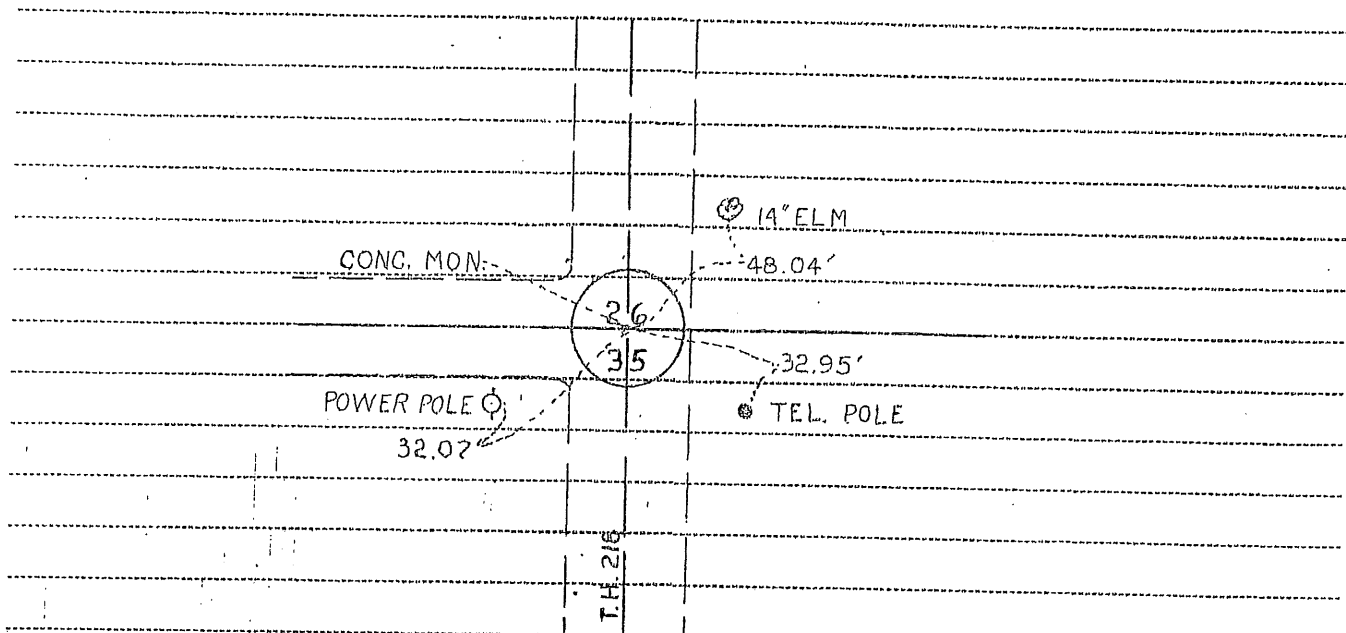
which was evidenced by 1 x 2 wood hub over iron monument

and I further certify that to perpetuate the location of such corner I did at the exact location thereof place a permanent marker consisting of precast concrete monument with aluminum cap

I further certify that I established (none)

reference or witness monuments consisting of See sketch below.

which reference or witness monuments are located in the manner following:



Dated at Brainard Minn., this 2 day of June 1954

*Lynn M. Carlson*  
Civil Engineer Surveyor  
Minnesota Highway Department

OFFICE OF REGISTER OF DEEDS }  
County of Brainard } ss.

I hereby certify that the within instrument was filed in this office for record on the

day of June A. D. 1954 at 10 o'clock P.

Register of Deeds

By Deputy