

Certified, Filed and or Recorded on
MAR. 30, 2007 AT 01:45PM

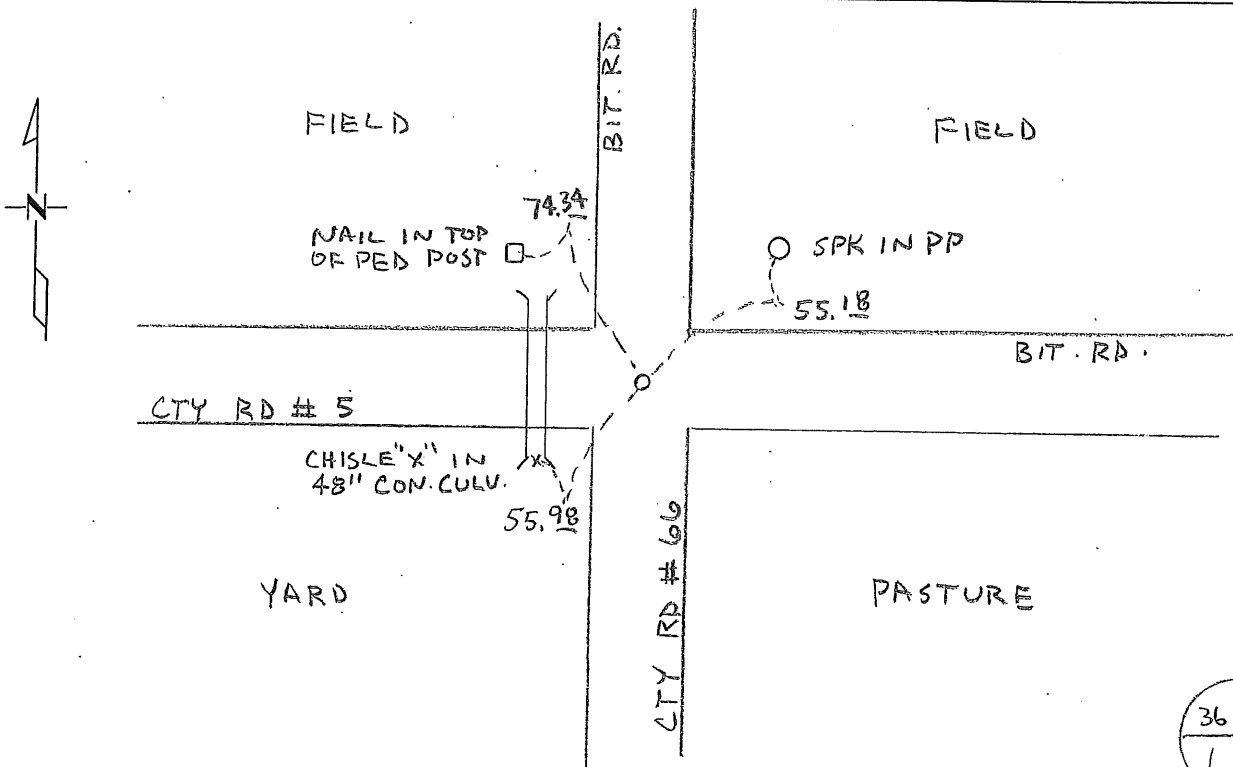
Signed: BW
MARILYN J NOVAK V I
BENTON COUNTY MINNESOTA
MARILYN J NOVAK
COUNTY RECORDER

CERTIFICATE OF LOCATION OF GOVERNMENT CORNER

NE Corner of Section 1, Township 37, Range 29
4TH Principal Meridian, State of Minnesota, County of Benton

At the corner location shown on the sketch:

- On _____ found a _____
DATE
- left monument as found lowered monument removed monument (explain)
- On 6-29-06 placed an 1/2" I.P. # 19552
DATE



Statement of evidence for this corner location is on back of this page.

I hereby certify that this document was researched and prepared by me or under my direct supervision and that I am a licensed Land Surveyor under the laws of the State of Minnesota.

Signature: Jerome C. Wittstock Date: 28 MARCH 2007 License No. 19552

Title: Land Surveyor Professional Engineer County Surveyor County Engineer

Benton County Surveyor's Office
 Jerome C. Wittstock, County Surveyor
 Minnesota License No. 19552

Statement of Evidence:

H012

Northeast Corner of Section 1, Township 37 North, Range 29 West, Gilmanton Township, 4th
 Principal Meridian, Benton County, Minnesota.

- 1849 Original US General Land Office survey set a wood post at this location and bearing trees were recorded.
- | | | |
|-------------|--------|-----------|
| 14" W Birch | N 40 E | 241 links |
| 12" Elm | S 38 W | 90 links |
| 8" Elm | S 6 E | 160 links |
- 1912 County Surveyor's Record Book 2, page 306 lists ties to an iron monument in the center of cross roads:
- | | | |
|------------------------|-----------|-----------|
| Fence corner | NW | 42.5 feet |
| NE corner School House | S 55-30 W | 133 feet |
- 1912 County Engineer's Notebook No. 2, pages 49 and 50, contains a road survey for SR No. 14 by M. J. Cleveland. Survey runs north-south on section line. Notes show iron monument at the corner with same ties as above. Stationing gives distances of 2637 feet to the SE corner and 2688 to the NE corner of Section 12.
- 1912 County Engineer's Notebook 2, pages 61, is a road survey for SR No. 2 by M. J. Cleveland. Survey was run on section line east from this corner.
- 1921 County Engineers' Notebook No. 39 shows survey of road on town line east-west with corner marked by an iron monument with ties:
- | | | | | | |
|---------------|-----------|------|-----------|----|-------|
| NE Cor School | S 55-30 W | 133' | Tel. Pole | SW | 44.0' |
|---------------|-----------|------|-----------|----|-------|
- 1922 County Engineer's Notebook No. 28 gives tie to granite monument in Road: T.P. SW 44.0'
- 1936 County Engineer's Notebook No. 101 is a road survey for a road running north from this corner. Ties to iron pipe:
- | | | | | | |
|---------------|----|-------|---------|----|-------|
| NE Cor School | SW | 133.2 | 6" B.E. | NW | 128.8 |
|---------------|----|-------|---------|----|-------|
- 1941 County Engineer's Notebook No. 152 contains a road survey for CAR 32 running south to north on township line. Corner is shown marked by an iron in center of SAR 5. Ties:
- | | | | | | |
|---------------|----|-------|----------|----|-------|
| NE Cor School | SW | 133.2 | 10" Elm. | NW | 136.5 |
|---------------|----|-------|----------|----|-------|
- 1955 County Engineer's Notebook No. 202 shows a survey of SAR 5 running west to east on town line. Corner is shown marked by a spike set in center of road with CAR 32 north and south. Same ties as in 1941 and 1961 are noted to placed iron same as in 1963.
- 1955 County Surveyor's Record Book 1, page 533 notes an iron with the following reference ties:
- | | | | | | |
|---------------|----|-------|---------|----|-------|
| NE Cor School | SW | 133.2 | 10" Elm | NW | 136.5 |
|---------------|----|-------|---------|----|-------|
- 1963 County Surveyor's Record Book 1, page 533 notes an iron placed in 1961 with a spike in blacktop set in 1963 with the following reference ties:
- | | | | | | | | | |
|----|----|-------|----|----|-------|----|----|-------|
| PP | NE | 69.15 | TP | SW | 51.35 | PP | SE | 112.9 |
|----|----|-------|----|----|-------|----|----|-------|
- 1994 Kevin Festler, LS 22702, found a spike at the centerline of roads north/south and east/west. He replaced it with a cast iron monument and filed a Certificate of Location (#226898).
- 1995 Comstock and Davis performed GPS work under contract with Benton County and Coordinates Obtained by GPS NAD 83 (1986 Adjustment) to a CIM:
- | |
|----------------|
| N- 164407.932 |
| E - 542446.567 |
- 1995 William Lunser, LS 9394, notes per Doc. No. 234180 a distance of 2627.44 feet to the East ¼ corner Sec 1.

Benton County Surveyor's Office
Jerome C. Wittstock, County Surveyor
Minnesota License No. 19552

- 2000 Westwood Professional Services, Inc. found a cast iron monument at centerline/centerline.
- 2003 County Coordinates Obtained by GPS to CIM
NAD 83 (1996 Adjustment)
N- 164408.228
E- 542446.242

Township Landmarks: Minnesota Statutes 381.13 required every county to have placed by a surveyor at the northeast corner of each congressional township a durable magnetic monument having a head not less than 3-1/2 inches in diameter and a length of 20 inches. We have not been able to find evidence that this was done in Benton County, but it was done in most counties in the late 1800's and is a possibility that it was also done in Benton County. Many of the counties used stone monuments instead of iron.

NEED TO CHECK FOR TIE TO SCHOOL HOUSE & EXCAVATION FOR GRANITE MONUMENT.

- 2006 Excavated 12-foot x 8-foot x 6-foot deep hole. Neither the original government corner post nor bearing trees were found. Down 3 feet, under the existing CIM, a 1-inch by 18-inch iron rod was found. Down 5.5 feet, under the rod and CIM, a large granite field stone with wood post along side was found. These monuments fit the tie to the northeast corner of the school house within one foot. Believing this to be the best available evidence, a 1/2-inch by 15-inch iron pipe was set with cap marked 19552 at the position of the CIM, rod, and stone/wood post. The 2003 coordinates were verified to be correct.

CERTIFICATE OF LOCATION OF GOVERNMENT CORNER

Northeast Corner of Section 1, Township 37, Range 29, 4th P.M.

STATE OF MINNESOTA, County of Benton

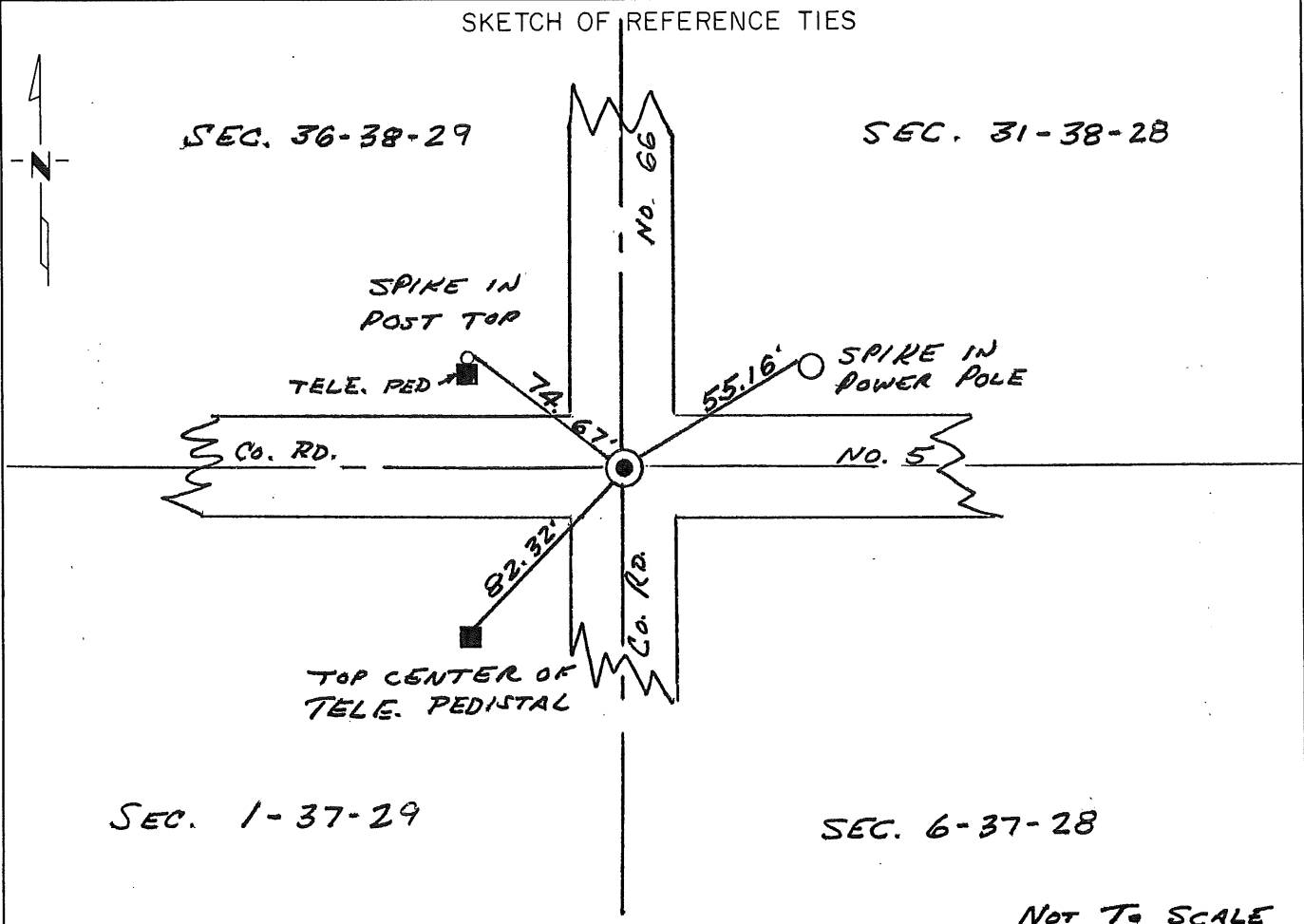
At the corner location shown on the sketch:

On 7-1-94 found a Spike
DATE

left monument as found, lowered monument, removed monument (explain)

On 9-23-94 placed a Benton County Cast Iron Monument
DATE

SKETCH OF REFERENCE TIES



Statement of evidence relative to this corner location is on back of page.

I hereby certify that this document and the data contained herein was prepared by me or under my direct supervision.

[Signature] SIGNATURE Nov. 14, 1994 DATE

Registration No. 22702
 Land Surveyor, Professional Engineer
 County Surveyor, County Engineer

OFFICE OF THE COUNTY RECORDER
County of _____

I hereby certify that this document was filed in the Co. Recorders office at _____ .M. on the _____ day of _____ A.D., 19 ____

County Recorder _____
By _____, Deputy
DOCUMENT NO. _____

Statement of Evidence:

The northeast corner of Section 1, Township 37, Range 29, 4th Principal Meridian, Benton County, Minnesota, was set under the Public Land Survey as a post with 3 bearing trees, in 1849. No trace of post or trees now exists.

A search by Benton County Highway personnel of available county survey records revealed no additional information on this corner.

On July 1, 1994, Comstock & Davis, Inc. while remonumenting section corners for the purpose of G.P.S. work for Benton County, searched at the position of the northeast corner of Section 1, Twp. 37, Range 29 at centerline-centerline and found a spike. Comstock & Davis, Inc. compared the location of the spike to the original US Government Survey and found the position to be within reason of the Public Land Survey records. Comstock & Davis, Inc accepted the spike position as the northeast corner of Sec. 1. On Sept. 23, 1994 Comstock & Davis, Inc. placed a Benton County cast iron monument at the northeast corner of Sec. 1. Refer to Job No. 9450.17.

226898

OFFICE OF
BENTON COUNTY RECORDER
BENTON COUNTY, MN
CERTIFIED TO BE FILED
AND/OR RECORDED ON

JAN 19 3 05 PM '95

ALICE S. GARDNER
COUNTY RECORDER

BY *mm* DEPUTY *sm*