

Certified, Filed and or Recorded on
Nov. 07, 2008 AT 02:28PM

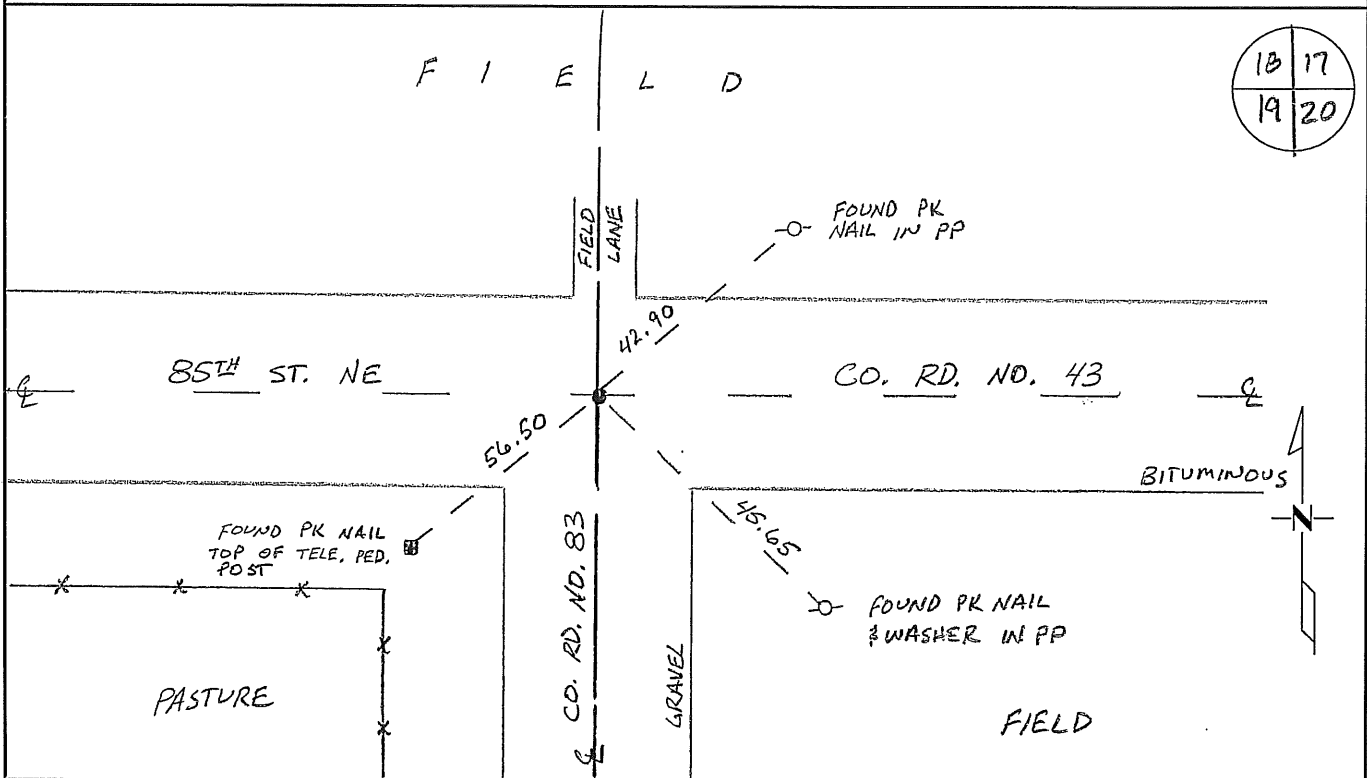
Signed: M
MARILYN J NOVAK
BENTON COUNTY MINNESOTA
MARILYN J NOVAK
COUNTY RECORDER

CERTIFICATE OF LOCATION OF GOVERNMENT CORNER

NORTHEAST Corner of Section 19, Township 37N, Range 29W
4TH Principal Meridian, State of Minnesota, County of Benton

At the corner location shown on the sketch:

- On 10/29/08 found a CAST IRON MONUMENT FLUSH WITH ROAD
- left monument as found lowered monument removed monument (explain)
- On _____ placed an _____



Statement of evidence for this corner location is on back of this page.

I hereby certify that this document was researched and prepared by me or under my direct supervision and that I am a licensed Land Surveyor under the laws of the State of Minnesota.

Signature Jan W. Cole
Deputy Benton County Surveyor
License No. 45872

Date: 11/06/2008

Benton County Surveyor's Office
 Jason W. Oberg, Deputy County Surveyor
 Minnesota License No. 45872

Statement of Evidence:

H192

Northeast Corner of Section 19, Township 37 North, Range 29 West, Gilmanton Township, 4th Principal Meridian, Benton County, Minnesota.

1855 Original US General Land Office survey established corner marked with a wood post with bearing trees noted as:

13" Ash	S 5 ½ W	10 links
11" Ash	N 6 ¾ W	19 links

1939 County Engineer's Notebook No. 158 contains road survey for CAR No. 20 running east to west along the section line. Corner is shown as a spike set in center of road with SAR 11 south. Ties:

Cor. F.P.	SW	36.05'
F.P.	SE	28.85'

1987 Paul Wellen, LS 10461, found a ½ " iron pipe in road intersection, with roads running east, west, and south. He removed the iron pipe and set a cast iron monument. Filed Certificate of Location (Doc. No. 184288). Notes show measurements of 2639.75 feet to the North ¼ corner of Section 20 and 5241.13 feet to the NE corner of Section 18.

2008 The County Surveyor's Office searched and found Wellens 1987 cast iron monument along the centerline intersections of east-west and north-south gravel roads. Ties from 1939 were not found. Distances to the N ¼ Cor. of Section 20 and the NE Cor. of Section 18 give 2639.53 ft. 5241.45 ft., respectively, which agree with Wellens 1987 measurements. The corner is accepted as the best evidence. Ties were updated.

County Coordinates Obtained by GPS
 NAD 83 (1996 Adjustment)
 N-148241.313
 E-516067.331

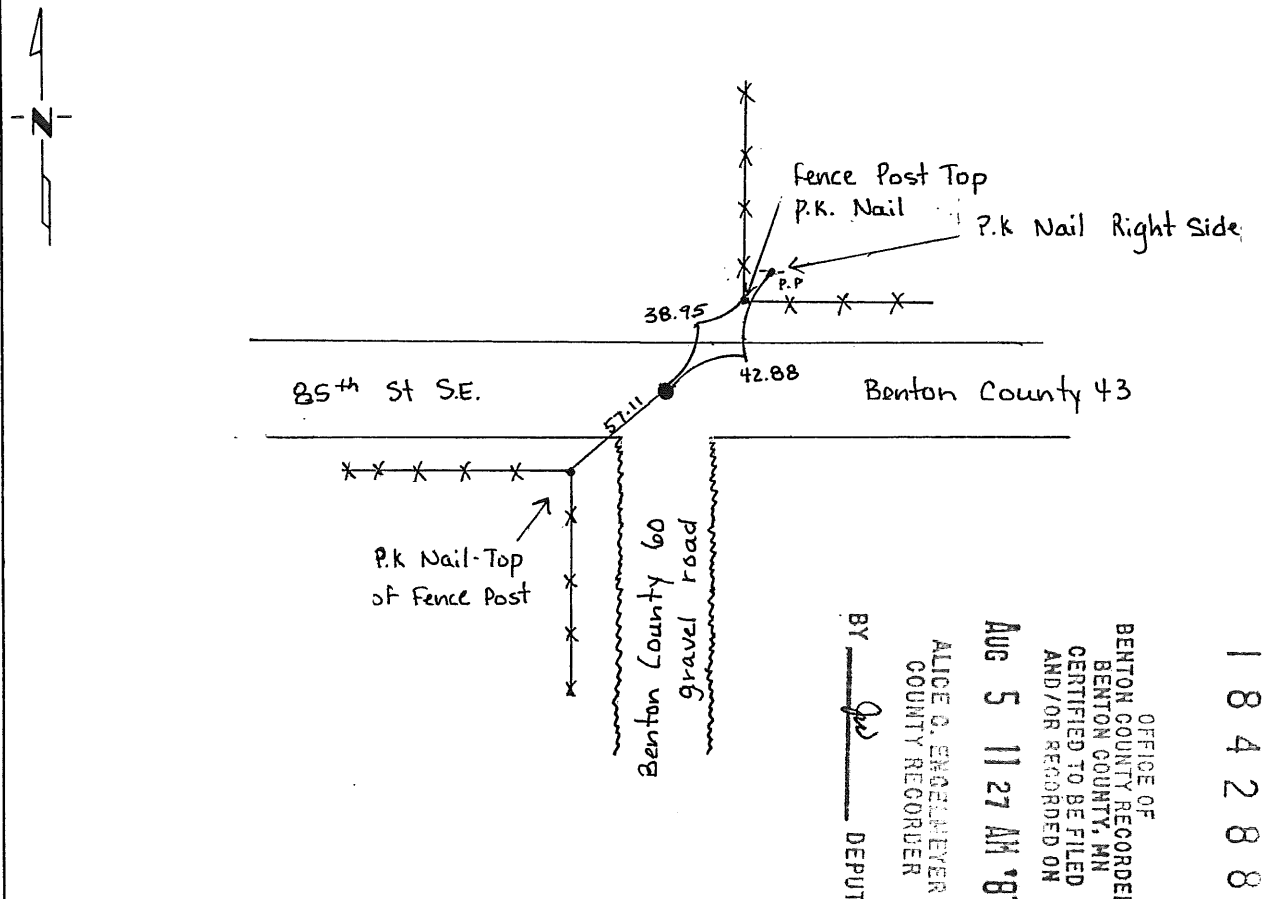
CERTIFICATE OF LOCATION OF GOVERNMENT CORNER

Northeast Corner of Section 19, Township 37, Range 29, 4th P.M.
STATE OF MINNESOTA, County of Benton

At the corner location shown on the sketch:

- On 4-14-87 found a 1/2 inch iron pipe at the intersection of the Center Lines of County Road 43 and County Road 60
 left monument as found, lowered monument, removed monument (explain)
- On 6-8-87 placed a Cast Iron Monument

SKETCH OF REFERENCE TIES



184288

Statement of evidence relative to this corner location is on back of page.

I hereby certify that this document and the data contained herein was prepared by me or under my direct supervision.

[Signature]
SIGNATURE
6-29-87
DATE

Registration No. 10461

- Land Surveyor, Professional Engineer
- County Surveyor, County Engineer

OFFICE OF THE COUNTY RECORDER
County of _____

I hereby certify that this document was filed in the Co. Recorders office at _____ M. on the _____ day of _____ A.D., 19 _____

County Recorder _____

By _____, Deputy

DOCUMENT NO. _____