

CERTIFICATE OF LOCATION OF GOVERNMENT CORNER

NORTHEAST Corner of Section 27, Township 37N, Range 29W, 4TH P.M.

STATE OF MINNESOTA, County of BENTON

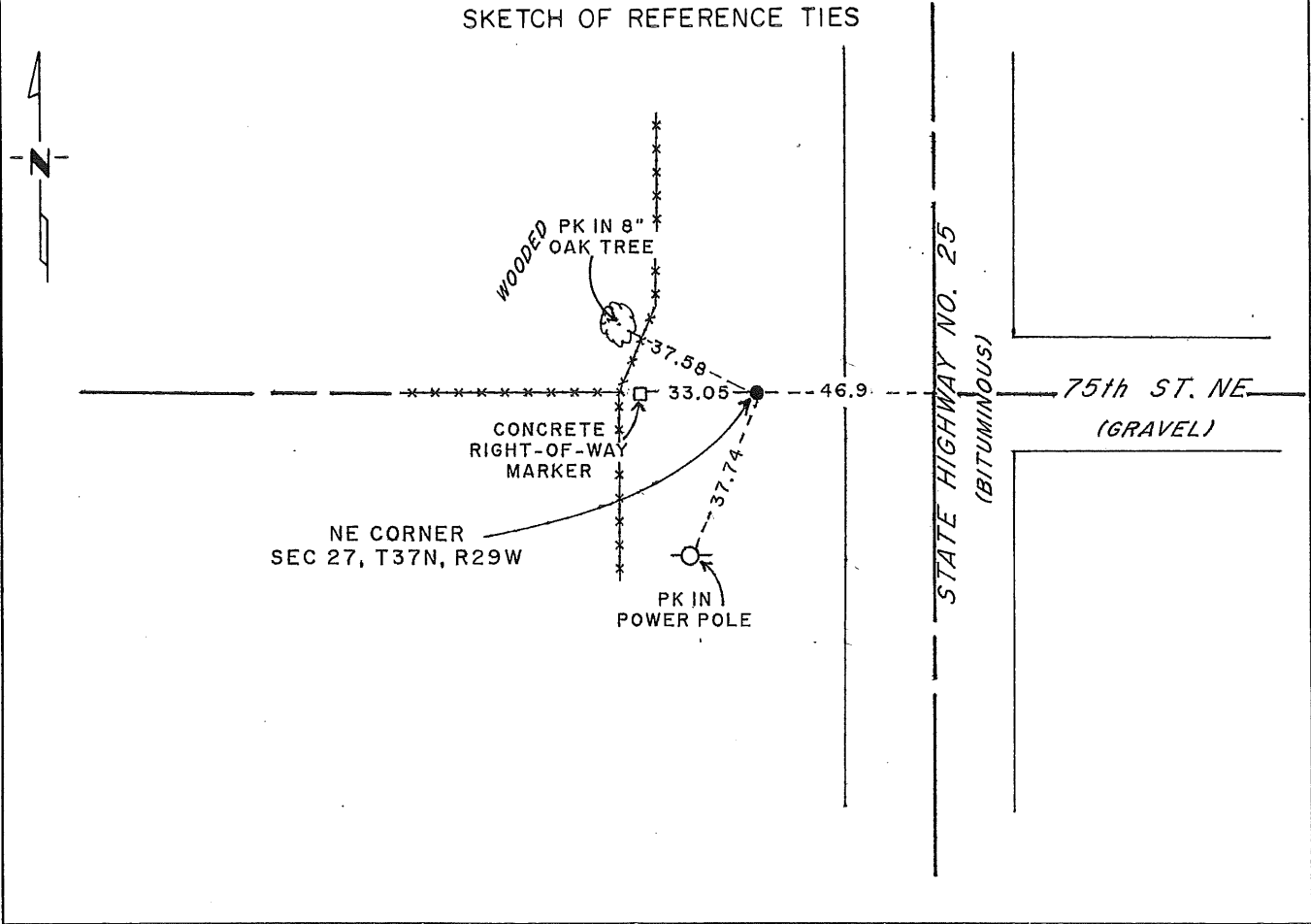
At the corner location shown on the sketch:

On 9 SEPT 1988 found a ZINC CAP MARKED WITH AND SECTION NUMBERS
DATE on 8" round precast concrete monument

left monument as found, lowered monument, removed monument (explain)

On _____ placed a _____
DATE

SKETCH OF REFERENCE TIES



Statement of evidence relative to this corner location is on back of page.

I hereby certify that this document and the data contained herein was prepared by me or under my direct supervision.

Bruce W. Johnston SIGNATURE 12-20-88 DATE

Registration No. 17768

Land Surveyor, Professional Engineer

County Surveyor, County Engineer

OFFICE OF THE COUNTY RECORDER

County of _____

I hereby certify that this document was filed in the Co. Recorders office at _____ .M. on the _____ day of _____ A.D., 19 _____

County Recorder _____

By _____, Deputy

DOCUMENT NO. _____

Statement of Evidence:

NORTHEAST CORNER, SECTION 27, T37N, R29W, 4TH P.M.

1. During the G.L.O. Survey of 1855, Mr. Oscar F. Davis a U.S. Deputy surveyor, set a wood post to mark this corner.
2. Benton County's old surveyor's books indicated a gas pipe with reference ties, at the location of said corner with no date.
3. On December 14, 1948, C.H. West Land Surveyor License number 932, found an iron pipe and replaced it with a 8" x 30" round precast concrete monument with a cap and established reference ties as indicated on his Certificate of Replacing Section Corner Dated February 9, 1951.
4. On September 9, 1988, Paul E. Wellen & Associates Inc., located the 8" round precast concrete monument with cap. The old reference ties were not in place. We made new reference ties as indicated.

191335

OFFICE OF
BENTON COUNTY RECORDER
BENTON COUNTY, MN
CERTIFIED TO BE FILED
AND/OR RECORDED ON

JAN 20 9 09 AM '89

ALICE O. ENGELMEYER
COUNTY RECORDER

BY Al DEPUTY

CERTIFICATE OF REPLACING SECTION CORNER

Corner to Sec. 22-23-26-27 T. 37N. R. 29W.

State of Minnesota }
County of Benton } ss.

I hereby certify that on 14th day of December 1948

I found the N.E. Corner to Sec. 27 twp. 37N. Rge. 29W.

which was evidenced by an iron pin

and I further certify that to perpetuate the location of such corner I did at the exact location thereof place a permanent marker consisting of a 8" x 30" round precast concrete monument with cap.

I further certify that I established 2

reference or witness monuments consisting of 2 1/2" x 5' iron R/W pipe

which reference or witness monuments are located in the manner following:

N.E. 180.5 feet and S. E. 180.5 feet which is 75 feet from the center line of T. H. 218 and are above the ground.

Dated at St Cloud Minn., this 2nd day of April 1950

James West Land Surveyor Reg 932

OFFICE OF REGISTER OF DEEDS }
County of Benton } ss.

I hereby certify that the within instrument was filed in this office for record on the 9th

day of Feb A. D. 1951 at 2 o'clock P.M.

Thomas Niedzicki Register of Deeds

By Deputy