

Certified, Filed and or Recorded on
Sep. 22, 2009 AT 12:24PM

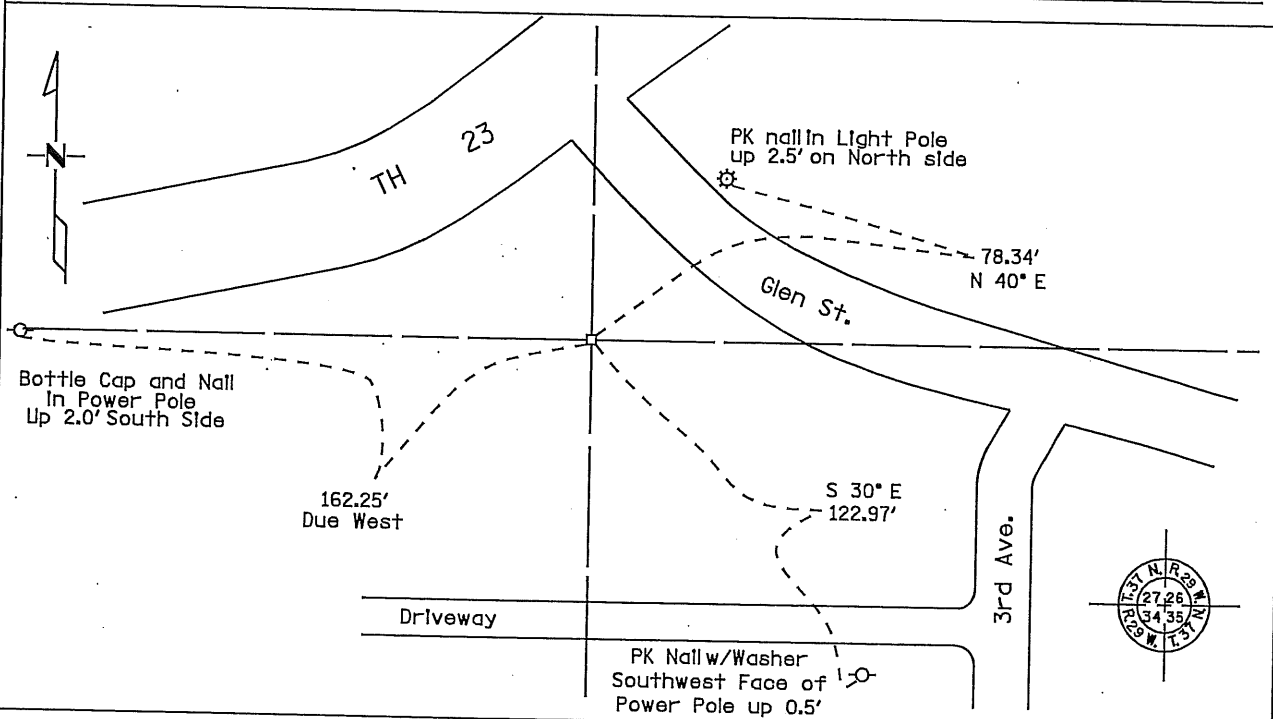
Signed: BW
MARILYN J NOVAK G V
BENTON COUNTY MINNESOTA
MARILYN J NOVAK
COUNTY RECORDER
Fee Amount: \$46.00

CERTIFICATE OF LOCATION OF GOVERNMENT CORNER

Northeast Corner of Section 34, Township 37, Range 29
4TH Principal Meridian, State of Minnesota, County of Benton

At the corner location shown on the sketch:

- On 09-09-09 found a Concrete Monument with a 3" Aluminum Cap down 0.5'
- left monument as found lowered monument removed monument (explain)
- On _____ placed a _____



Statement of evidence for this corner location is on back of this page.

I hereby certify that this document was researched and prepared by me or under my direct supervision.

Signature Kevin J. Metz Date 9-10-2009 License No. 40343
 Title: Land Surveyor MNDOT Professional Engineer County Surveyor County Engineer

Statement of Evidence:

A 368994

Northeast Corner of Section 34, Township 37 North, Range 29 West, Gilmanton Township, 4th Principal Meridian, Benton County, Minnesota.

1855 Oscar F. Davis ran the original public survey and set a wood post with bearing trees noted as:

14" Black Oak	S 44 W	34 links
18" Elm	N 42 ½ E	32 links

1907 County Road Book, pages 4-6 contains a road survey by Felix Parent, County Surveyor, for State Road Survey shows corner found and road run north.

1912 County Engineer's Notebook 1, pages 33-37, contain road surveys by M. J. Cleveland for SR No. 10. Notes show survey ends at this corner from the west.

1949 C. H. West found a fieldstone and filed a Certificate of Location. He set an 8" round by 30" pre-cast concrete monument with an aluminum cap for the corner. MN/DOT alignment map for TH 23 shows the same information with the corner being at the intersection of roads east-west and north and fence south with ties:

TP	NE	34.4
PP	SE	35.0
FP	SE	42.8

MN/DOT alignment map for TH 25 shows concrete monument with aluminum cap with ties:

MHD in TP	NW	33.52
MHD in Cor FP	S	33.47
MHD in 4" Boxelder	SE	33.76
NW cor bldg.	SW	15.81

County Highway notebook 1, page 60 contains notes by J. D. Kotsmith, (who must have been working with MN/DOT). Notes show a field stone was found 3 feet below the road surface and MN/DOT concrete monument set: ties:

MHD in TP	NW	34.9
MHD in FP	SW	30.7
MHD in HTL	SE	35.0

A distance of 2616.39 feet is given to the North Quarter Corner of Section 35.

This corner is noted on the following recorded plats

FOLEY INDUSTRIAL PARK (Iron)	7/10/75	Delbert Rieke
BRONDER ADDITION (MN/DOT Mon.)	8/7/1989	Sidney Williamson

1983 Sidney Williamson, LS 10918, found a 3" Aluminum capped monument with section numbers. He filed a Certificate of Location, Document No. 168500.

David Regan, LS 12236, found an 8" X 8" concrete highway monument with a zinc cap with the section numbers stamped on it. He filed a Certificate of Location, Document No. 167989. Both certificates have some of the same ties.

2003 Westwood Professional Services, Inc. found a ½" iron pipe with cap No. 10918 at the corner. The area has been graded over and the building shown on the two certificates is gone and the concrete monument destroyed. Also found a ½" iron pipe with cap 10918 being 3.15 feet south, a ¾" iron pipe 23.70 feet south, and a ½" iron pipe 33.82 feet south. These pipes agree with previous surveys and plats. Westwood accepted the capped iron pipe with No. 10918 as the same position as the MN/DOT concrete monument. Westwood discussed the corner with Sam DeLeo, LS 40341, who was surveying in the area and had come to the same conclusion.

County Coordinates Obtained by GPS (for reference only):

NAD 83 (1996 Adjustment)
N- 137613.457
E- 531862.027

2004 On June 22nd, 2004, The Minnesota Department of Transportation found the irons as described above. In the process of setting a cast iron monument at the location of the capped iron pipe, a concrete monument with a 3" aluminum cap was found 0.62 feet south. The iron pipe was removed and the concrete monument was left in place. Reference ties were established.

County Coordinates Obtained by GPS (for reference only):

NAD 83 (1996 Adjustment)
N- 137612.84
E- 531861.85

2009 On September 9th, 2009, The Minnesota Department of Transportation found a concrete monument with a 3" aluminum cap. Reference Ties were verified and established as shown on the front of this document. The Minnesota Department of Transportation accepts the concrete monument with a 3" aluminum cap as the correct location of the Northeast Corner of Section 34.

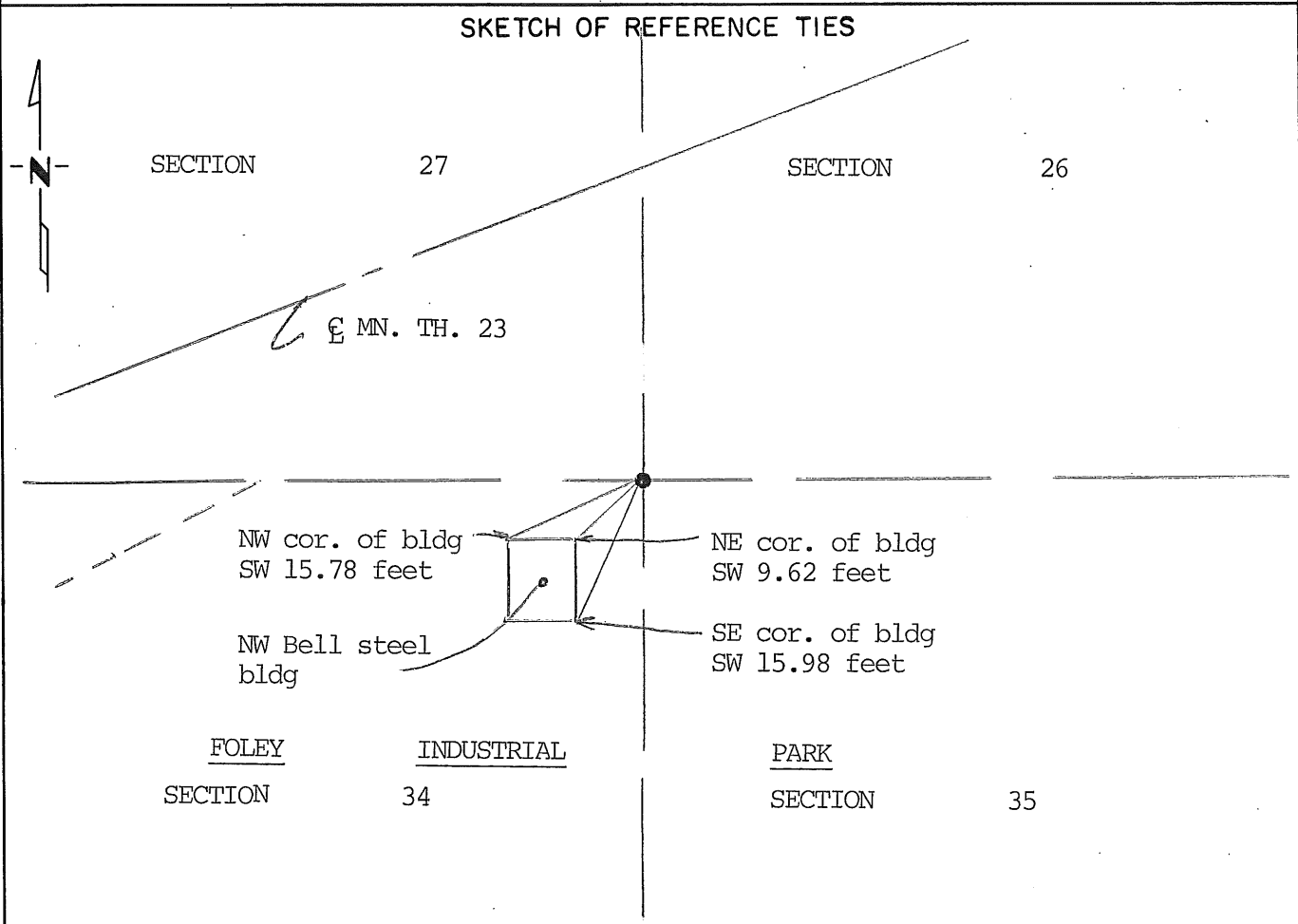
For details and survey analysis, contact the Minnesota Department of Transportation District Surveys Office in Baxter, Minnesota.

CERTIFICATE OF LOCATION OF GOVERNMENT CORNER

NORTHEAST Corner of Section 34, Township 37 N., Range 29 W., 4th P.M.
 STATE OF MINNESOTA, County of BENTON

At the corner location shown on the sketch:

- On Dec. 2, 1983 found a 3 inch Alum. cap monument with sections 26, 27, 34 & 35, T. ^{DATE} 37 N., R. 29 W. on top
- left monument as found, lowered monument, removed monument (explain)
- On _____ placed a _____



Statement of evidence relative to this corner location is on back of page.

I hereby certify that this document and the data contained herein was prepared by me or under my direct supervision.

Sidney F. Williamson 2/23/84
SIGNATURE DATE

Registration No. 10918

- Land Surveyor, Professional Engineer
- County Surveyor, County Engineer

County Recorder
 OFFICE OF THE REGISTER OF DEEDS
 County of Benton

I hereby certify that this document was filed in the Reg. of Deeds office at 4 P.M. on the 2nd day of March A.D., 1984

Register of Deeds F. G. Johnson

By _____, Deputy

DOCUMENT NO. 168500

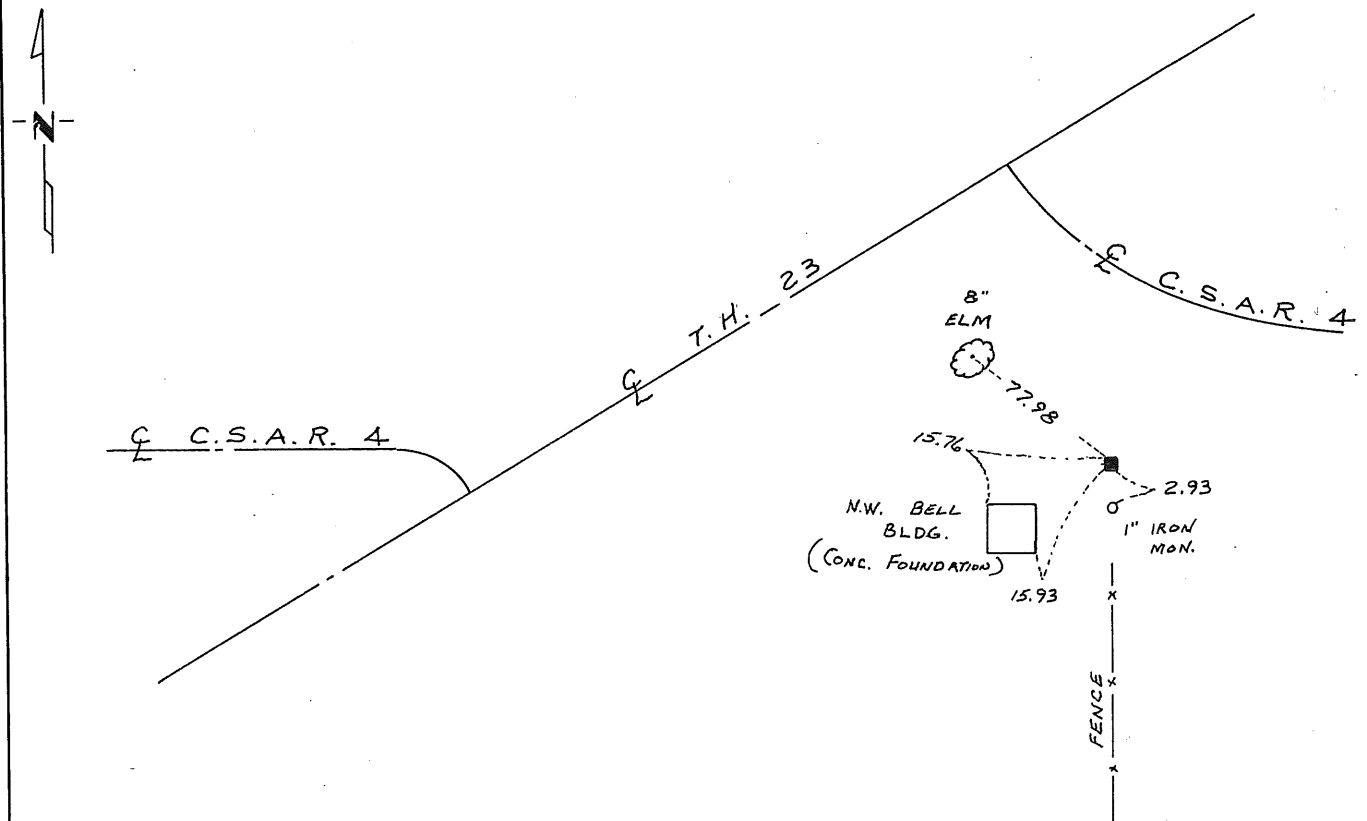
CERTIFICATE OF LOCATION OF GOVERNMENT CORNER

Northeast Corner of Section 34, Township 37, Range 29, 4th P.M.
STATE OF MINNESOTA, County of Benton

At the corner location shown on the sketch:

- On 11/16/83 found a 8 inch by 8 inch concrete Hwy Monument with zinc cap with section # stamped on cap
 left monument as found, lowered monument, removed monument (explain)
- On _____ placed a _____

SKETCH OF REFERENCE TIES



Statement of evidence relative to this corner location is on back of page.

I hereby certify that this document and the data contained herein was prepared by me or under my direct supervision.

David G. Regan 1/3/84
SIGNATURE DATE

Registration No. 12236

- Land Surveyor, Professional Engineer
- County Surveyor, County Engineer

OFFICE OF THE REGISTER OF DEEDS
County of Benton

I hereby certify that this document was filed in the Reg. of Deeds office at 4 P.M. on the 18 day of January A.D., 1984

F.L. Johnson
County Recorder Register of Deeds

By _____, Deputy

DOCUMENT NO. 167989

CERTIFICATE OF REPLACING SECTION CORNER

Corner to Sec. 26-27-34-35 T. 37N. R. 29W.

State of Minnesota }
County of Benton } ss.

I hereby certify that on 11th day of April 19 49

I found the N.E. Corner to Sec. 34 Twp. 37N Rge 29W.

which was evidenced by a field stone

and I further certify that to perpetuate the location of such corner I did at the exact location thereof place a permanent marker consisting of a 8" x 30" round precast concrete monument with cap.

I further certify that I established 3 reference or witness monuments consisting of Fence post, telephone, Elec. power pole.

which reference or witness monuments are located in the manner following:

N.E. 344 feet to a disc in telephone pole, S. E. 35.0 feet to Disc in power pole and S.W. 42.8 feet to disc in fence post.

Dated at St. Cloud Minn., this 3rd day of April 19 50

Land Surveyor Reg 932

OFFICE OF REGISTER OF DEEDS }
County of Benton } ss.

I hereby certify that the within instrument was filed in this office for record on the 9th day of Feb A. D. 19 51 at 2 o'clock P.M.

Thomas Niedzicki Register of Deeds

By Deputy