

# CERTIFICATE OF LOCATION OF GOVERNMENT CORNER

NORTHEAST Corner of Section 35, Township 37N, Range 29W, 4th P.M.

STATE OF MINNESOTA, County of BENTON

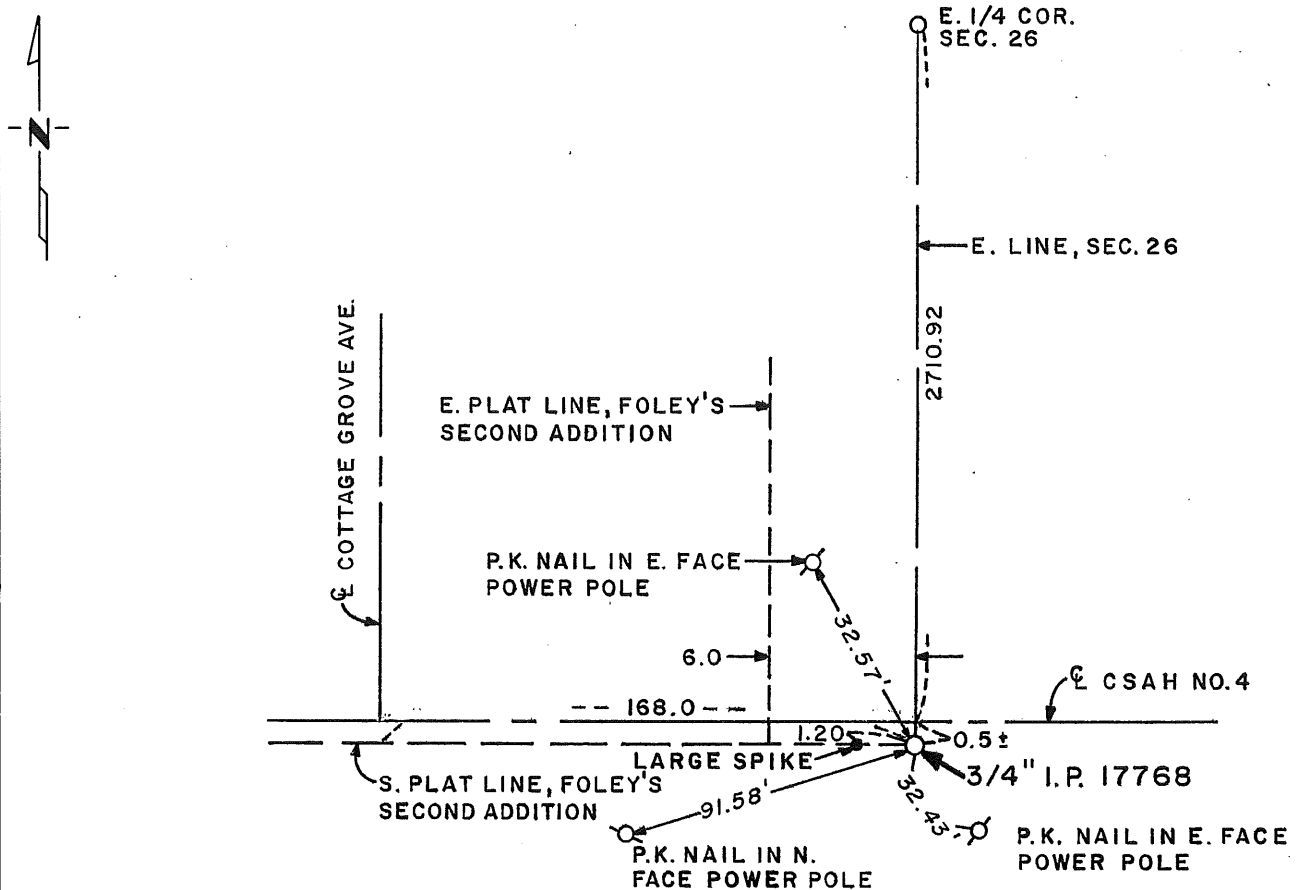
At the corner location shown on the sketch:

On \_\_\_\_\_ found a \_\_\_\_\_  
DATE

left monument as found,  lowered monument,  removed monument (explain)

On 12-22-86 placed a 3/4" IRON PIPE WITH R.L.S. 17768 CAP  
DATE

### SKETCH OF REFERENCE TIES



Statement of evidence relative to this corner location is on back of page.

**181315**

I hereby certify that this document and the data contained herein was prepared by me or under my direct supervision.

Bruce W. Skipton SIGNATURE      1-20-87 DATE

Registration No. 17768

Land Surveyor,  Professional Engineer

County Surveyor,  County Engineer

County Recorder  
OFFICE OF THE REGISTER OF DEEDS  
County of Benton

I hereby certify that this document was filed in the Reg. of Deeds office at 9 .M. on the 2 day of February A.D., 19 87

County Recorder  
Alice C. Langlmeyer

By JW, Deputy

DOCUMENT NO. Microfilmed 181315

Statement of Evidence:

1. Post set by U.S. Government Surveyors in July 1855.
2. Iron and wooden stake found 6 feet west of the southeast corner of FOLEY'S SECOND ADDITION surveyed by John Abercrombie in March 1902.
3. See the statement of evidence on the Certificate of Location of Government corners for the east quarter corner of Section 26 for additional evidence of the east line of Section 26.

