

MARILYN J. NOVAK
COUNTY RECORDER
BY CK DEPUTY

OFFICE OF
BENTON COUNTY RECORDER
BENTON COUNTY, MN
CERTIFIED TO BE FILED
AND/OR RECORDED ON

293735

2002 DEC 31 P 3:56

CERTIFICATE OF LOCATION OF GOVERNMENT CORNER

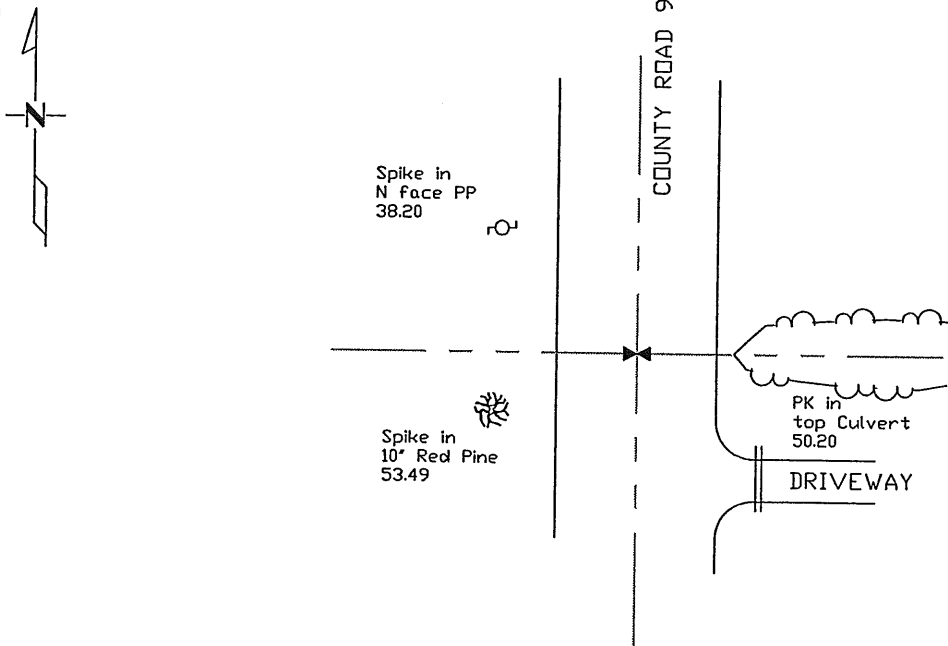
East Quarter _____ Corner of Section 11, Township 36, Range 28
4TH Principal Meridian, State of Minnesota, County of BENTON

At the corner location shown on the sketch:

On _____ found a _____
DATE

left monument as found lowered monument removed monument (explain)

On 11/5/2002 placed an iron capped #12684 at the lost position
DATE



New tree and power pole ties are to the head of a nail with a brass disk marked "Corner Tie".

Statement of evidence for this corner location is on back of this page.

I hereby certify that this document was researched and prepared by me or under my direct supervision and that I am a licensed Land Surveyor under the laws of the State of Minnesota.

Signature Amel A. Alwan

Date 11/25/02

License No. 12684

Title: Land Surveyor Professional Engineer County Surveyor County Engineer

Statement of Evidence:

J113

The East Quarter Corner of Section 11, Township 36 North, Range 28 West, Glendorado Township, 4th Principal Meridian, Benton County, Minnesota.

In 1855, Oscar F. Davis set a wood post at this location and bearing trees were recorded.

14" Sugar	S 25 W	21 links
10" Oak	S 20 1/2 E	33 links

In Book 1, page 29 and on December 20, 1901, (on a John E. Whilt survey, listed as map No. 41) this corner is set lost at 20.33 1/4 chains per 40 acres.

On November 5, 2002 Westwood Professional Services, Inc. searched the corner area, but found no evidence of a corner or ties. We measured 5355.04 feet between section corners, which compared well with the Whilt survey of 81.33 chains (5367.78 feet). Since Whilt established the corner lost in 1901 we set an iron capped #12684 at the lost position and established reference ties. The corner is set at 1338.76 feet per 40 acres.

Coordinates

NAD 83 (1996 Adjustment)

N-124305.682

E-568790.979