

Certified, Filed and or Recorded on
Oct. 07, 2008 AT 02:51PM

Signed: BW
MARILYN J NOVAK
BENTON COUNTY MINNESOTA
MARILYN J NOVAK
COUNTY RECORDER

CERTIFICATE OF LOCATION OF GOVERNMENT CORNER

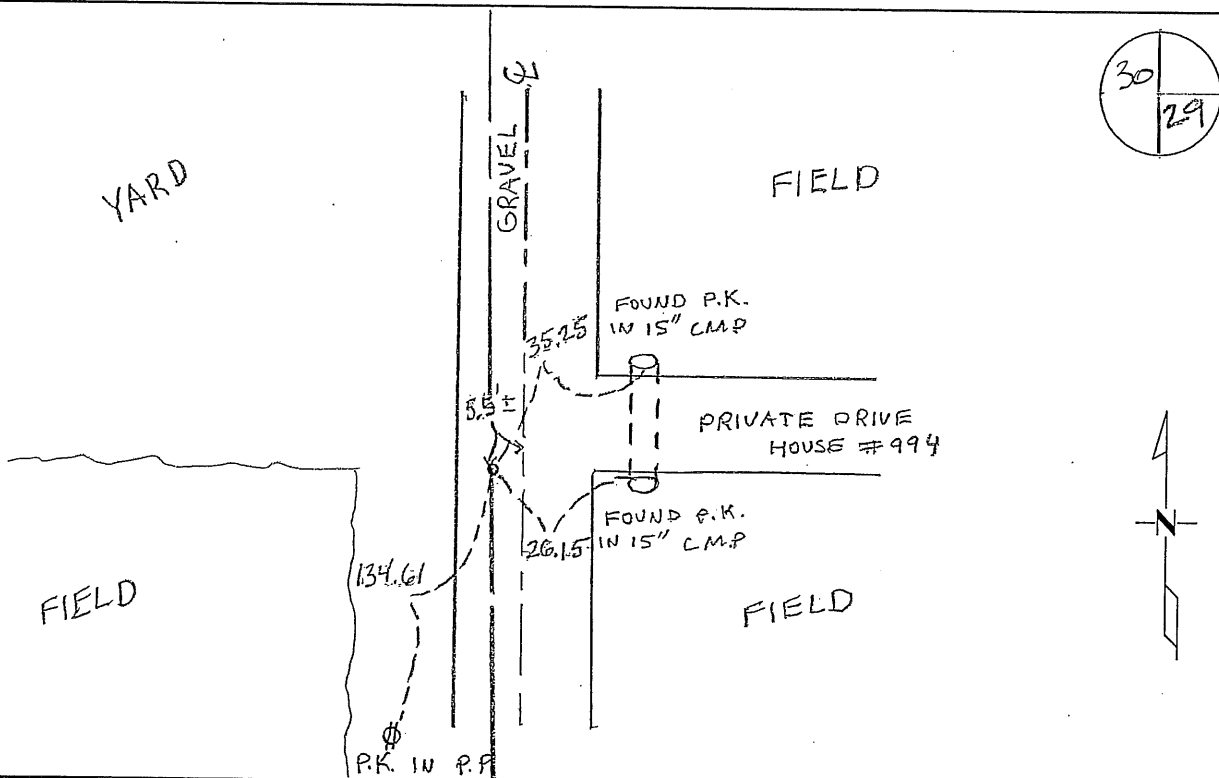
E 1/4 Corner of Section 30, Township 36, Range 28
4TH Principal Meridian, State of Minnesota, County of Benton

At the corner location shown on the sketch:

On 1-2-08 found a CONCRETE

left monument as found lowered monument removed monument (explain)

On 9-29-08 placed an 1/2 INCH IRON PIPE WITH CAP NO. 19552



Statement of evidence for this corner location is on back of this page.

I hereby certify that this document was researched and prepared by me or under my direct supervision and that I am a licensed Land Surveyor under the laws of the State of Minnesota.

Signature Dean W. O'Leary
Deputy Benton County Surveyor
License No. 45872

Date: 10/06/08

Benton County Surveyor's Office
Jason W. Oberg, Deputy County Surveyor
Minnesota License No. 45872

Statement of Evidence

J303

The East Quarter Corner of Section 30, Township 36 North, Range 28 West, Glendorado Township, 4th Principal Meridian, Benton County, Minnesota.

- 1855 Original US General Land Office survey set a wood post at this location and bearing trees were recorded.
6" Blk Oak S 41 3/4 E 37 links
- 2002 No resurvey information was found on this corner in the Benton County Surveyor's records. However, back of County Engineer's notebook No. 46 shows east line of Section measured at 5314.40 feet and the 1/4 corner midway. (Book is dated 1925.) County Engineer's notebook No. 79 shows line measured at 5330.5 with 1/4 corner midway, although note says set by testimony of Wm. David in c/l wagon track (Book is dated 1930).
- 2008 The County Surveyor's Office searched and did not find evidence of the corner. Per the wood post found by Dennis Pederson (RLS 16095) at the SE corner, and 1925 survey information, the corner was set lost at 6", more or less, under the gravel road with a 1/2" iron pipe capped "RLS 19552." This position agrees with an old east-west fence line to the east. Ties were made.

County Coordinates obtained by GPS
NAD 83 (1996 Adjustment)
N-108358.385
E-548035.665