

1-6

A 362860

Certified, Filed and or Recorded on
JAN. 06, 2009 AT 02:55PM

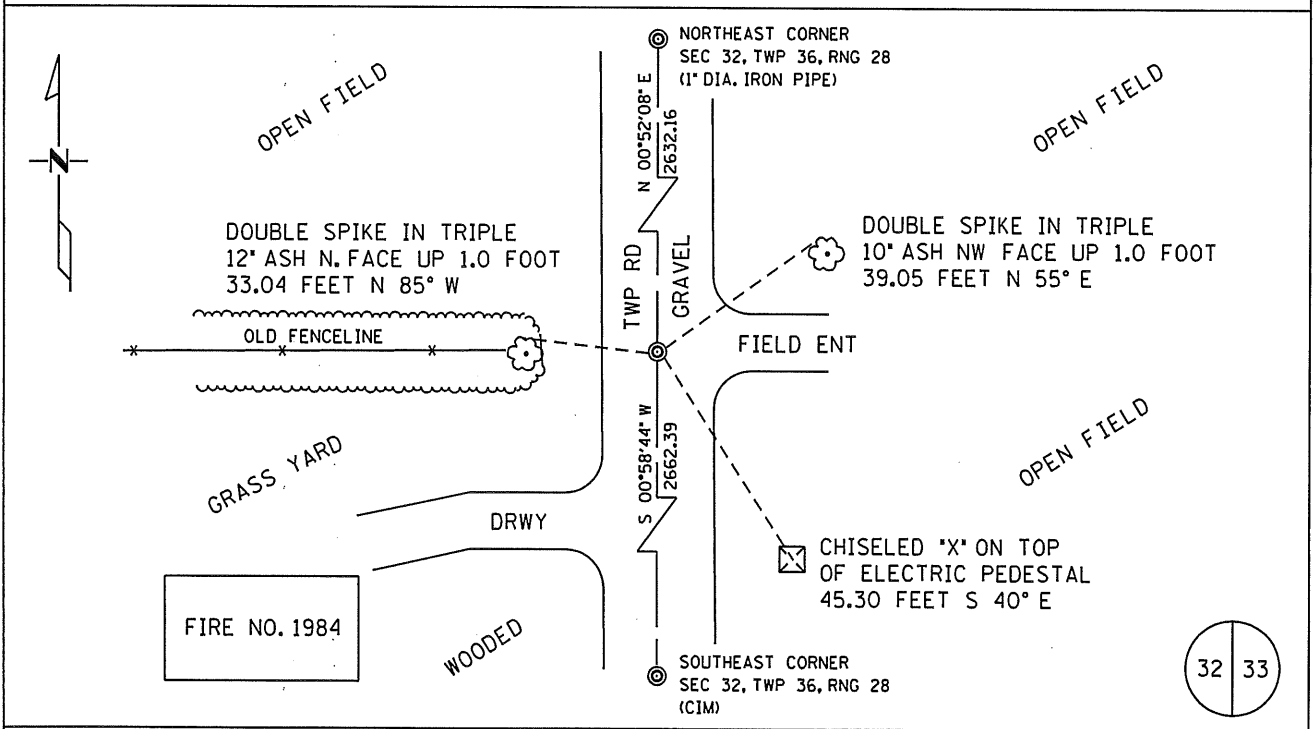
Signed: CK
MARILYN J NOVAK B V I
BENTON COUNTY MINNESOTA
MARILYN J NOVAK
COUNTY RECORDER

CERTIFICATE OF LOCATION OF GOVERNMENT CORNER

EAST QUARTER Corner of Section 32, Township 36N, Range 28W
4TH Principal Meridian, State of Minnesota, County of BENTON

At the corner location shown on the sketch:

- On 6/3/2005 found a 1/2" IRON PIPE W/ CAP STAMPED RLS 12236, DOWN 0.5 FEET.
DATE REMOVED PIPE AND EXCAVATED 2.5' WIDE BY 10' LONG BY 2.5' DEEP HOLE, FOUND NOTHING.
- left monument as found lowered monument removed monument (explain)
- On 6/3/2005 placed a STD CAST IRON MONUMENT IN PLACE OF PIPE, DOWN 0.9 FEET.
DATE



Statement of evidence for this corner location is on back of this page.

I hereby certify that this document was researched and prepared by me or under my direct supervision.

Signature Sue J. DeLo Date 8-13-2008 License No. 40341
 Title: Land Surveyor Professional Engineer County Surveyor County Engineer

Statement of Evidence:

J323

East Quarter Corner of Section 32, Township 36 North, Range 28 West, Glendorado Township, 4th Principal Meridian, Benton County, Minnesota.

- 1855 Original US General Land Office survey set a wood post at this location and bearing trees were recorded.
- | | | |
|------------|----------|-----------|
| 7" Bur Oak | N 88 W | 50 links |
| 9" Blk Oak | N 25 ½ E | 102 links |
- 1916 County Surveyor's Record Book 1, page 6, shows survey by J. P. Soderstrum. He found Gov't BT lying down and made new tie:
- 7" R. Oak SW 70 ½ links
- He gives measurements of 39.88 chains (2632.08 feet) to NE corner and 40.26 chains (2657.16 feet) to the SE corner of Section 32.
- 2005 Sam DeLeo, LS 40341, reported finding an iron pipe with cap stamped LS 12236 and an old fence line to the west. The pipe was removed and a 10 foot long by 2.5 feet by 2 foot deep trench was excavated. No evidence of a monument marking the corner was found. Evidence of the accessories recorded in 1855 and 1919. The position of the iron pipe measured 2632.16 feet to the NE corner of the section and 2662.39 feet to the SE corner of the section which compares well with Soderstrum's 1916 measurements. The iron pipe was replaced with a cast iron monument and reference ties were recorded.

County Coordinates obtained by GPS:

NAD 83 (1996 Adjustment)

N- 103026.960

E- 553268.686