

Certified, Filed and or Recorded on  
Sep. 23, 2008 AT 01:22PM

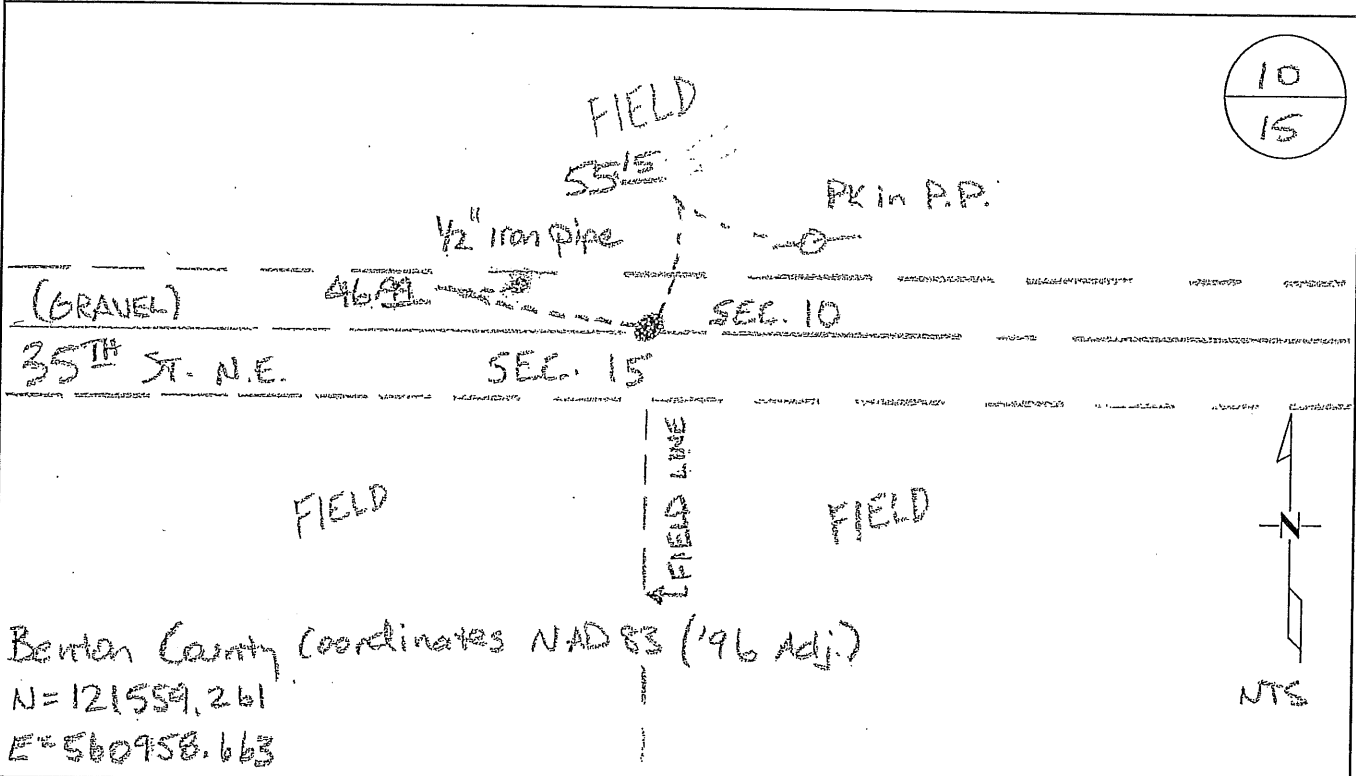
Signed: BW  
MARILYN J NOVAK RV  
BENTON COUNTY MINNESOTA  
MARILYN J NOVAK  
COUNTY RECORDER

# CERTIFICATE OF LOCATION OF GOVERNMENT CORNER

N 1/4 Corner of Section 15, Township 36N, Range 28W  
4TH Principal Meridian, State of Minnesota, County of Benton

At the corner location shown on the sketch:

- On 7-17-08 found a charred wood post underneath a 6"x6" stone at E of east-west road.
- left monument as found       lowered monument       removed monument (explain)
- On 8-28-08 placed an cast iron monument set above charred wood post and measured ties.



Benton County Coordinates NAD 83 (196 Adj.)  
 N = 121559.261  
 E = 560958.663

Statement of evidence for this corner location is on back of this page.

I hereby certify that this document was researched and prepared by me or under my direct supervision and that I am a licensed Land Surveyor under the laws of the State of Minnesota.

Signature Jan W. Oleg  
Deputy Benton County Surveyor  
License No. 45872

Date: 9/22/08

Benton County Surveyor's Office  
 Jason W. Oberg, Deputy County Surveyor  
 Minnesota License No. 45872

**Statement of Evidence:**

**J151**

The North Quarter Corner of Section 15, Township 36 North, Range 28 West,  
 Glendorado Township, 4<sup>th</sup> Principal Meridian, Benton County, Minnesota.

1855 Original US General Land Office survey set a wood post at this location and  
 bearing trees were recorded.

12" W Birch	S 24 W	5 links
9" Lind	N 33 E	15 links

2002 No resurvey information was found on this corner in the Benton County records.

2008 On July 17, 2008, The Benton County Surveyor's Office excavated at the  
 intersection of the centerline of an east-west gravel road (35<sup>th</sup> Street N.E.) and a  
 field line to the south and found remains of a charred wood post underneath a  
 stone at 3 ft. ± below grade. Further excavation revealed possible remains of  
 bearing trees at 6 ft. ± below grade. The Surveyor returned one month later and  
 found a cast iron monument was placed over the charred post by Sam Deleo (RLS  
 #40341). Re-measured ties.

Benton County Coordinates obtained by GPS  
 NAD 83 (1996 Adjustment)  
 N-121559.261  
 E-560958.663