

MARILYN J. NOVAK  
COUNTY RECORDER

BY AK DEPUTY

OFFICE OF  
BENTON COUNTY RECORDER  
BENTON COUNTY, MN  
CERTIFIED TO BE FILED  
AND/OR RECORDED ON

293713

2002 DEC 31 P 3: 55

### CERTIFICATE OF LOCATION OF GOVERNMENT CORNER

North Quarter Corner of Section 19, Township 36, Range 28

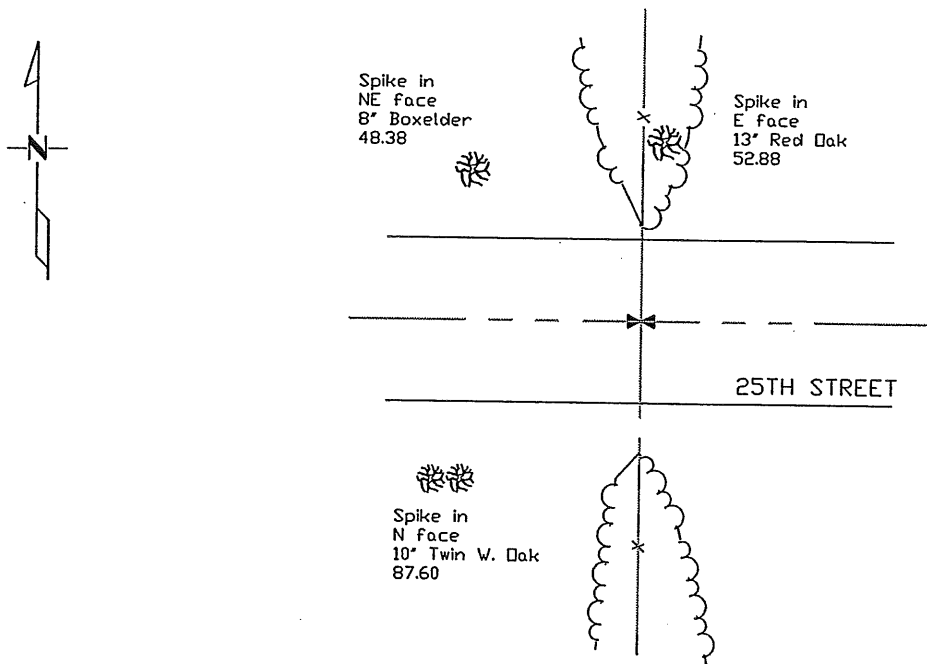
4TH Principal Meridian, State of Minnesota, County of BENTON

At the corner location shown on the sketch:

On \_\_\_\_\_ found a \_\_\_\_\_  
DATE

left monument as found     lowered monument     removed monument (explain)

On 12/4/2002 placed an 1/2" iron pipe capped #12684 at proportionate distance  
DATE  
from the NE and NW Corners of Section 30 per 1915 survey by J.P. Soderstrum



New ties are to the head of a nail.

Statement of evidence for this corner location is on back of this page.

I hereby certify that this document was researched and prepared by me or under my direct supervision and that I am a licensed Land Surveyor under the laws of the State of Minnesota.

Signature [Signature] Date 12/12/02 License No. 12684

Title:  Land Surveyor     Professional Engineer     County Surveyor     County Engineer

**Statement of Evidence:**

**J191**

The North Quarter Corner of Section 19, Township 36 North, Range 28 West, Glendorado Township, 4<sup>th</sup> Principal Meridian, Benton County, Minnesota.

1855 Corner established by GLO and marked by a wood post with bearing trees noted as:

16" Bur Oak	S 24 W	160 links
6" Black Oak	N 11 E	54 links

1915 The County Surveyors records in Book 1, page 45 and 46, shows that on June 1, 1915, J.P. Soderstrum did a survey of Section 19. At the corner he found stumps of both Gov't BT's at and drove oak stake level with the ground and took new BT's as follows:

10" R. Oak S 9-15 W 70 (links)

10" Basswood N 27-45 W 75 (links)

Notes show total mile at 78.76 chains (5198.16 feet) Survey with 39.85 chains (2630.10 feet) to NW corner and 38.91 chains (2568.06 feet) to NE corner.

2002 Westwood Professional Services, Inc. searched corner area at intersection of road east-west and fence lines north-south. No monument or evidence of bearing trees was found. We measured 5197.48 feet between section corners, which compared well with Soderstrum. We considered the corner to be obliterated based on the Soderstrum survey and established the corner using the center of east-west road and proportionate distances to Soderstrum's survey between the NE and NW corners of Section 19. On December 4, 2002 Westwood Professional Services, Inc. set an iron capped #12684 at a proportionate distance from the NW and NE Cor Sec 19 based on Soderstrum's survey. The corner is 2567.72 feet to the NE Cor Sec 19 and 2629.76 feet to the NW Cor Sec 19. Corner is 10.02 feet south of a straight line between section corners.

County Coordinates  
NAD 83 (1996 Adjustment)  
N-116531.872  
E-545339.338