

Certified, Filed and or Recorded on  
Oct. 07, 2008 AT 02:48PM

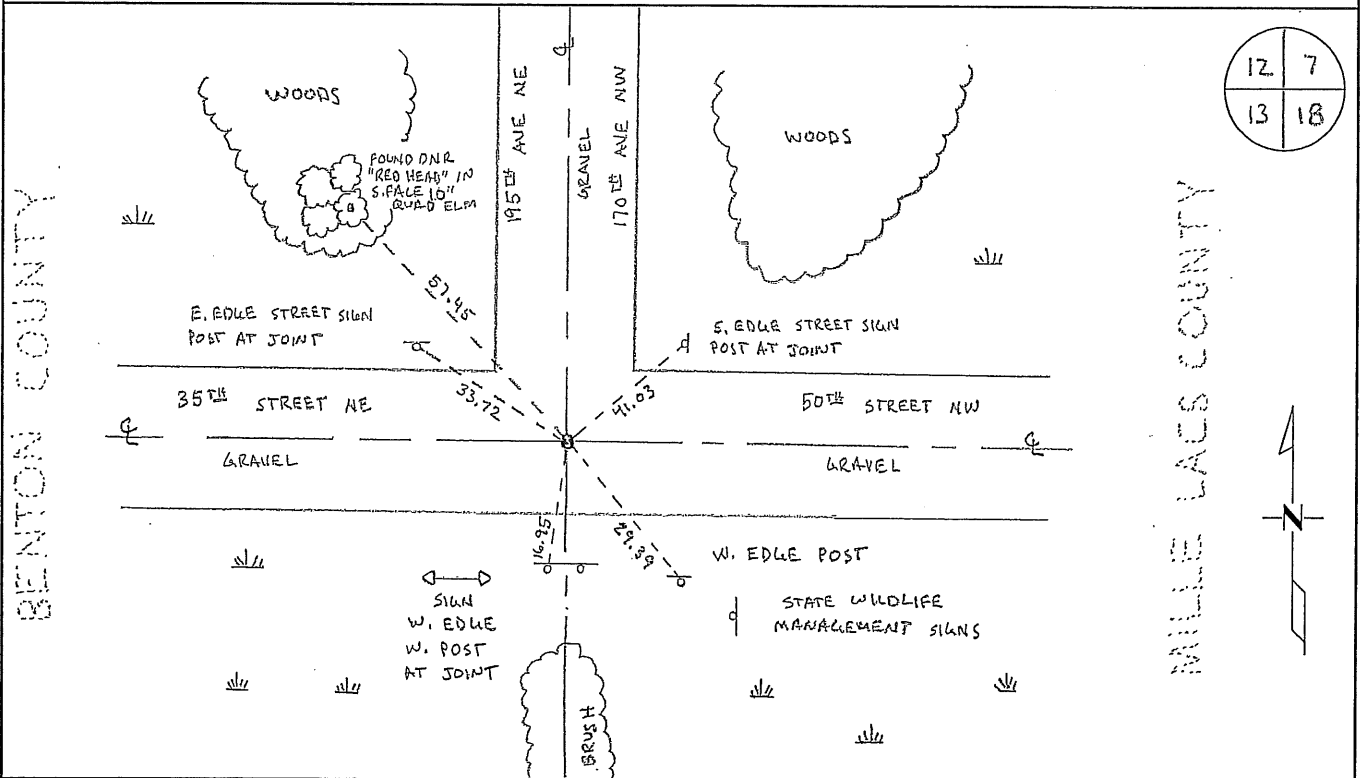
Signed: BW  
MARILYN J NOVAK  
BENTON COUNTY MINNESOTA  
MARILYN J NOVAK  
COUNTY RECORDER

# CERTIFICATE OF LOCATION OF GOVERNMENT CORNER

NORTHEAST Corner of Section 13, Township 36N, Range 28W  
4TH Principal Meridian, State of Minnesota, County of Benton

At the corner location shown on the sketch:

- On 09/30/08 found a BROKEN CAST IRON MONUMENT
- left monument as found       lowered monument       removed monument (explain)
- On \_\_\_\_\_ placed an \_\_\_\_\_



12	7
13	18



Statement of evidence for this corner location is on back of this page.

I hereby certify that this document was researched and prepared by me or under my direct supervision and that I am a licensed Land Surveyor under the laws of the State of Minnesota.

Signature *Ann W. Oley*  
Deputy Benton County Surveyor  
License No. 45872

Date: 10/06/08

PAGE 1 OF 2

Benton County Surveyor's Office  
 Jason W. Oberg, Deputy County Surveyor  
 Minnesota License No. 45872

**Statement of Evidence:****J132**

Northeast Corner of Section 13, Township 36 North, Range 28 West, Glendorado Township, 4<sup>th</sup> Principal Meridian, Benton County, Minnesota.

- 1849 Original US General Land Office survey set a wood post at this location and bearing trees were recorded.
- |             |        |          |
|-------------|--------|----------|
| 6" Tamarack | N 50 E | 6 links  |
| 6" Tamarack | S 73 E | 8 links  |
| 6" Tamarack | S 11 W | 27 links |
| 6" Tamarack | N 45 W | 14 links |
- Line trees were noted as a 6" Tamarack south 10.92 chains and a 6" Tamarack north 21.67 chains.
- 1910 Mille Lacs County records show S. L. Kennedy found the corner when surveying Section 7, 36-27 and notes that "Gov't corner - new tam. stake, NE Gov't tree standing, open, readable and SW Gov't tree down.
- 1917 Mille Lacs County records show that O. E. Garrison made a survey of the line between Sections 7 and 18 and notes post and Gov't bearings at this corner.
- 1965 Minnesota DNR did a survey in Section 13 in which their notes state: "set corner from County records at intersection of roads and fence south". They placed a MN/DNR cast iron monument.
- 1988 William Lunser, LS 9394, found a RR spike in road intersection based on MN/DNR record. He replaced the spike with a cast iron monument and filed a Certificate of Location (Doc. No. 191244). Gives distance of 2662.0 feet to the North ¼ corner of Section 13.
- 1994 John Oliver, LS 8194, Mille Lacs County Surveyor, found CIM during road survey for CSAH No. 7.  
 County Coordinates from John Oliver & Associates by traverse  
 NAD 83 (1986 Adjustment)  
 N- 121878.290  
 E- 574174.308
- 1998 MN/DNR found CIM down 1 foot and set spike above. John Oliver found spike and filed Certificate of Location in Mille Lacs County. (Doc. No. 877)
- 2004 County Coordinates obtained by GPS to broken CIM:  
 NAD 83 (1996 Adjustment)  
 N- 121878.819  
 E- 574174.449
- 2008 The County Surveyor's Office searched and found a cast iron monument at the intersection of an east-west gravel road and a gravel road leading to the north. Distance to the North 1/4 Cor. gives 2662.00 feet which agrees with Lunser's 1988 measurement. Updated ties.

Benton County Coordinates obtained by GPS  
 NAD 83 (1996 Adjustment)  
 N- 121878.663  
 E- 574174.368

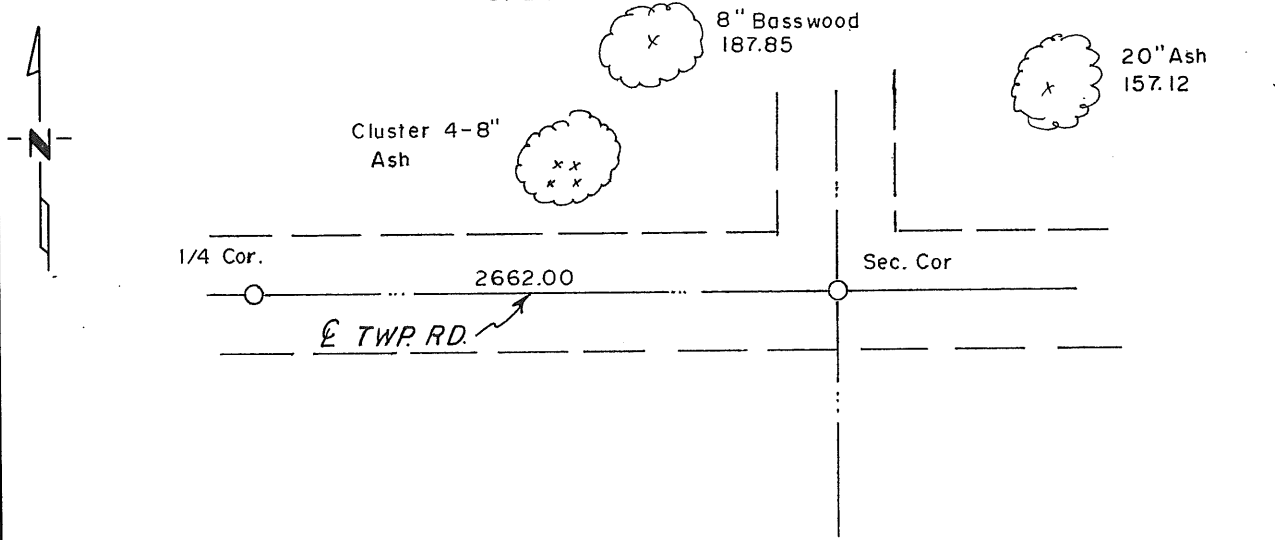
# CERTIFICATE OF LOCATION OF GOVERNMENT CORNER

Northeast Corner of Section 13, Township 36, Range 28, 4<sup>th</sup> P.M.  
STATE OF MINNESOTA, County of Benton

At the corner location shown on the sketch:

- On 5-18-88 found a Railroad spike  
DATE
- left monument as found,  lowered monument,  removed monument (explain)
- On 5-18-88 placed a Benton County Cast Iron Monument  
DATE

### SKETCH OF REFERENCE TIES



Note : Ties are  
40 Penny Spikes

Statement of evidence relative to this corner location is on back of page.

I hereby certify that this document and the data contained herein was prepared by me or under my direct supervision.

Matthew J. Luman 12/15/88  
SIGNATURE DATE

Registration No. 9394

- Land Surveyor,  Professional Engineer
- County Surveyor,  County Engineer

OFFICE OF THE REGISTER OF DEEDS  
County of \_\_\_\_\_

I hereby certify that this document was filed in the Reg. of Deeds office at \_\_\_\_\_ .M. on the \_\_\_\_\_ day of \_\_\_\_\_ A.D., 19 \_\_\_\_\_

Register of Deeds \_\_\_\_\_

By \_\_\_\_\_, Deputy

DOCUMENT NO. \_\_\_\_\_

Statement of Evidence:

5-21-65 The Dept. of Natural Resource notes state,  
this Corner was set per County Records on  
the centerline of two roads, north and east  
and west, and the distance to the 1/4 Corner  
west was 2662.00 feet.

191244

OFFICE OF  
BENTON COUNTY RECORDER  
BENTON COUNTY, MN  
CERTIFIED TO BE FILED  
AND/OR RECORDED ON

JAN 12 11 59 AM '69

ALICE C. ERBELEMEYER  
COUNTY RECORDER

BY *Jed* DEPUTY