

Certified, Filed and or Recorded on
OCT. 26, 2005 AT 03:46:00PM

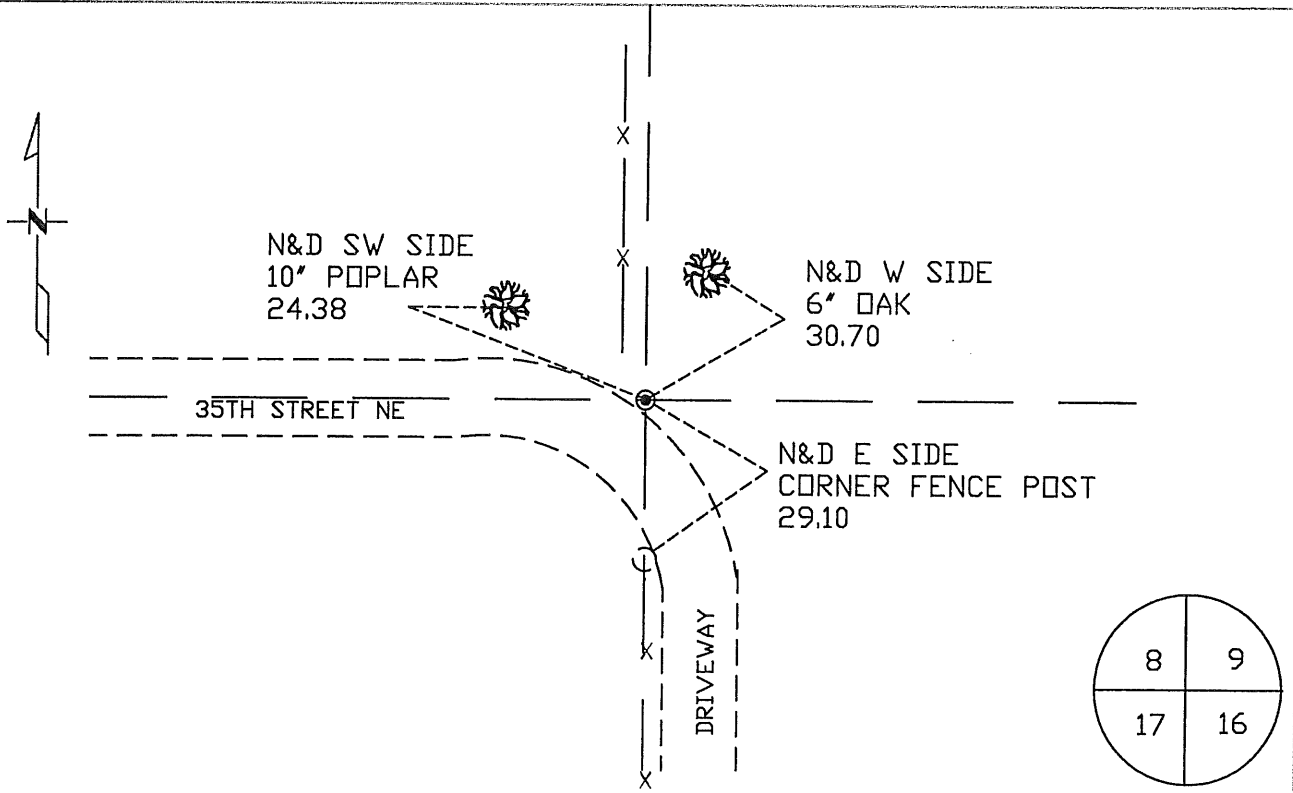
Signed: BW
MARILYN J NOVAK 6 V I
BENTON COUNTY MINNESOTA
MARILYN J NOVAK
COUNTY RECORDER

CERTIFICATE OF LOCATION OF GOVERNMENT CORNER

Northeast Corner of Section 17, Township 36 North, Range 28 West,
4th Principal Meridian, State of Minnesota, County of Benton

At the corner location shown on the sketch:

- On 5/4/2005 found a 1/2" Iron pipe
- left monument as found lowered monument removed monument (explain)
- On _____ placed a _____



Statement of evidence for this corner location is on back of this page.

I hereby certify that this document was researched and prepared by me or under my direct supervision and that I am a licensed Land Surveyor under the laws of the State of Minnesota.

Signature [Signature] Date 10/14/2005 License No. 12684

Title: Land Surveyor Professional Engineer County Surveyor County Engineer

Statement of Evidence:

J172

Northeast Corner of Section 17, Township 36 North, Range 28 West, Glendorado Township, 4th Principal Meridian, Benton County, Minnesota.

1855 Original US General Land Office survey set a wood post at this location and bearing trees were recorded.

9" Blk Oak	S 37 1/2 E	46 links
9" Bur Oak	S 45 W	57 links

1914 County Surveyor's Record Book 1, page 23, and Record Book A, Map No. 1, contains a survey by J.P. Soderstrum of Section 8. He set a stake at the corner by based on measurements from the NE corner Sec. 8 and the East 1/4 corner Sec. 17. This location checked with an oak stump SW for GLO BT. He notes corner is 10 links south of fence corner and new ties:

8" Br. Oak	N 64 W	68 links
20" Br. Oak	S 5 1/2 W	130 links

He notes a distance of 79.75 chains (5263.5 feet) to the NE corner Sec 8.

1914- County Surveyor's Record Book 1, pages 41 and 42, and Record Book A, Map No. 2, contains a survey for the subdivision of Section 17 by J.P. Soderstrum that shows same information as above. Gives distance of 40.16 chains (2650.56 feet) to the East 1/4 corner Section 17.

1925 County Engineer's Notebook No. 44, page 9, gives ties to a wooden stake:

8" Br. Oak	SW	54.2'
Cor. F.P.	S	15.9'
Cor. F.P.	N	14.1'

1938 Subdivision for Section 17 in Book 27, page 112. Ties are the same as above.

2005 1/25/05 searched corner area and found no surface monument. Set a spike for temporary corner in center of road west and fence line south. Fence line north is 6 feet west. William Lunser, LS 9394, reported finding an iron pipe at the corner. On 5/4/05 found 1/2" iron pipe 2 feet north of temporary corner. Measured north 5270.76 feet to the NE corner of Section 8 and south 2638.45 feet to the approximate East 1/4 corner of Section 17, which compares reasonably well with Soderstrum's 1914 distance. I accepted the found pipe as marking the obliterated corner position.

County Coordinates to obtained by GPS to 1/2" iron pipe:

NAD 83 (1996 Adjustment)

N- 121644.549

E- 553013.432