

Certified, Filed and or Recorded on
OCT. 18, 2005 AT 11:26:00AM

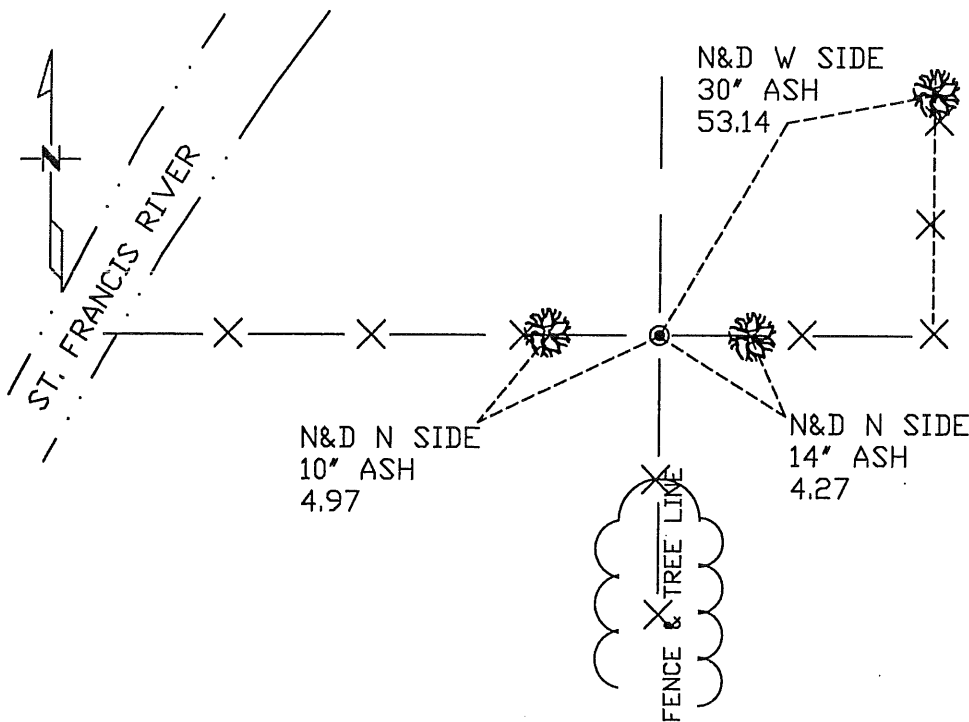
Signed:
MARILYN J NOVAK G W I
BENTON COUNTY MINNESOTA
MARILYN J NOVAK
COUNTY RECORDER

CERTIFICATE OF LOCATION OF GOVERNMENT CORNER

Northeast Corner of Section 18, Township 36 North, Range 28 West,
4th Principal Meridian, State of Minnesota, County of Benton

At the corner location shown on the sketch:

- On _____ found a _____
- left monument as found lowered monument removed monument (explain)
- On 8/4/2005 placed a Cast Iron Monument



Statement of evidence for this corner location is on back of this page.

I hereby certify that this document was researched and prepared by me or under my direct supervision and that I am a licensed Land Surveyor under the laws of the State of Minnesota.

Signature Date 10/14/2005 License No. 12684

Title: Land Surveyor Professional Engineer County Surveyor County Engineer

Statement of Evidence:

J182

Northeast Corner of Section 18, Township 36 North, Range 28 West, Glendorado Township, 4th Principal Meridian, Benton County, Minnesota.

- 1855 Original US General Land Office survey set a wood post at this location and bearing trees were recorded.
- | | | |
|-------------|---------|-----------|
| 16" Bur Oak | S 1/2 W | 65 links |
| 16" Bur Oak | S 19 E | 260 links |
- 1914 County Surveyor's Record Book 1, pages 23-24, and Record Book A, Map No. 1 shows a survey of Section 8 by J.P. Soderstrum. He found an old stump that checked with Gov't notes and intersection of fence lines.
- 1914 County Surveyor's Record Book 1, page 41, and Record Book A, Map No. 2 contains a survey of Section 17 by J.P. Soderstrum. He found an old stump that checked with Gov't notes and intersection of fence lines. He notes a distance of 40.56 chains (2676.96 feet) to the East 1/4 corner Sec 18.
- 2005 WSN searched corner area marked by the intersection of old fence lines, mostly down, running east-west and south. Dug around fence intersection, but found no evidence of a corner marker. Set a spike for a temporary corner at fence intersection. Talked to John Rahm, landowner in all 4 quadrants around this corner. In Section 7, he owns the East 10 acres of the SE 1/4, which he said was marked by remains of an old north-south fence. We tied into remains of this fence, which fits being 165 feet west of the temporary corner. The 1914 Benton County Plat Book shows common ownership between this 10 acres and the SW 1/4 of Section 8. He had never seen a corner marker, but believed it was at the intersection of the old fence lines, before he had purchased the adjoining land in Sections 17 and 18. The GLO notes give distances to a stream: 1.7 chains (112.2 feet) west and 4.00 chains (264 feet) north. The distance west to the center of the St. Francis River checks well with the GLO distance. Measured south 2679.41 feet to the East 1/4 corner of Section 18, which compares well with Soderstrum's distance in 1914. Accepted temporary corner as the best available evidence for the obliterated corner position based on Soderstrum's surveys in 1914. Replaced the spike with cast iron monument.
- County Coordinates obtained by side-tie from GPS points:
NAD 83 (1996 Adjustment)
N- 121701.267
E- 547878.101