

Certified, Filed and or Recorded on
Oct. 07, 2008 AT 02:50PM

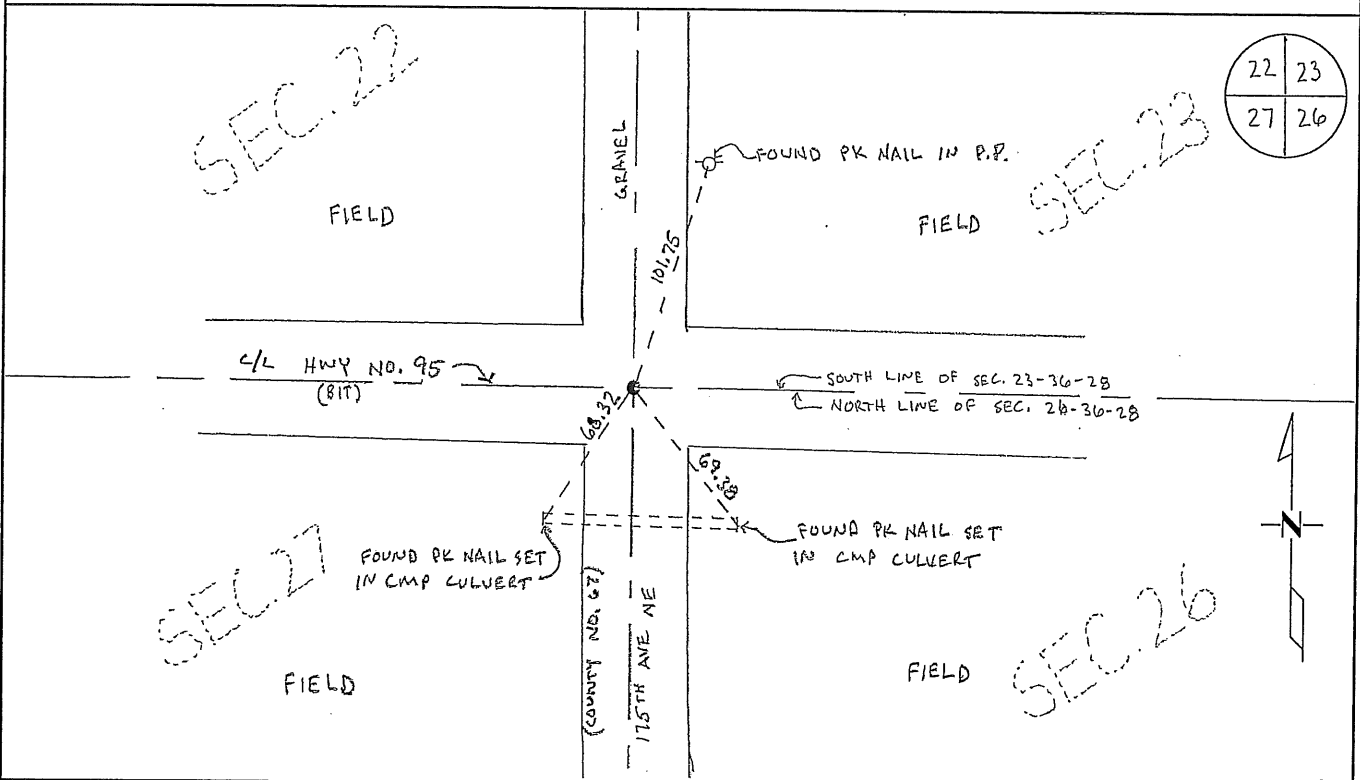
Signed: BW
MARILYN J NOVAK 6 V J
BENTON COUNTY MINNESOTA
MARILYN J NOVAK
COUNTY RECORDER

CERTIFICATE OF LOCATION OF GOVERNMENT CORNER

NORTHEAST Corner of Section 27, Township 36 N, Range 28 W
4TH Principal Meridian, State of Minnesota, County of Benton

At the corner location shown on the sketch:

- On 9/29/08 found a CAST IRON MONUMENT BELOW BITUMINOUS OF STATE HIGHWAY 95, FIT SKIPTON'S TIES
- left monument as found lowered monument removed monument (explain)
- On 09/29/08 placed an PK NAIL WITH BENTON COUNTY SURVEYOR DISK



Statement of evidence for this corner location is on back of this page.

I hereby certify that this document was researched and prepared by me or under my direct supervision and that I am a licensed Land Surveyor under the laws of the State of Minnesota.

Signature Jan W. Oleg
Deputy Benton County Surveyor
License No. 45872

Date: 10/06/08

PAGE 1 OF 2

Benton County Surveyor's Office
 Jason W. Oberg, Deputy County Surveyor
 Minnesota License No. 45872

Statement of Evidence:

J272

The Northeast Corner of Section 27, Township 36 North, Range 28 West, Glendorado Township,
 4th Principal Meridian, Benton County, Minnesota.

- 1855 Original US General Land Office survey set a wood post at this location and bearing trees were recorded:
- | | | | |
|------------|--------|----------|----------|
| 26" Poplar | | S 77 ½ E | 36 links |
| 14" Elm | N 69 W | | 37 links |
- 1901 County Surveyor's Record Book 1, page 61, and Record Book A, Map No. 40, is a survey of the subdivision of Section 27 by John E. Whilt. Corner is shown, but no information is given on the type of monument.
 Note: Page 59 shows a stone, 14", with + on top in center of road.
- 1914 County Surveyor's Record Book 1, pages 53-54, and Record Book A, Map No. 19, notes a survey of Section 23 by JP Soderstrum. He found a stone in intersection of roads with stake on north side, with marks plain. Mr. Huff claims Whilt set the stake and rock from Gov't BTs, which were standing at the time. Made new BT's:
- | | | |
|-----|--------|------------|
| Elm | N 52 W | 70 ½ links |
| TP | S 45 W | 52 links |
- 1924 County Engineer, Zeese, notes an iron at the corner.
- 1926 County Surveyor's Record Book 1, pages 51 and 52, and Map No. 48 contains a survey of Section 22 by Harry Elletson. (Notes in Notebook 48) He states he found post set by Soderstrum in 1915 and corner is marked by post and iron monument. New tie:
- | | | |
|---------|----|------|
| T. Pole | SW | 34.5 |
|---------|----|------|
- 1939 County Engineer's Notebook No. 123 contains survey of CAR 39 running south to north on section line. Corner is shown as a hub set in center of TH 95 east and west. Ties:
- | | | |
|------------|----|--------|
| TP | SW | 35.95' |
| Hwy Marker | NW | 66.2' |
- 1970's Roll E-4, of the MN/DOT Highway plans for TH 95, show the corner is marked by an RR Spike and is 0.24 ft ahead of the P.I. and is 2683.7 feet from the East ¼ corner Sec 22 with the following reference ties.
- | | | |
|----------|----|-------|
| N & D TP | NW | 47.28 |
| N & D PP | SW | 79.68 |
| N & D PP | NE | 53.1 |
- 1988 Bruce Skipton, LS 17768, set a cast iron monument at the centerline of roads north/south and east/west using MN/DOT stationing. He filed a Certificate of Location (#191328). His statement of evidence notes that Milner Carley notes an iron at the corner with no date.
- 2008 The Benton County Surveyor's Office searched and found a metal reading along State Highway No. 95 that fit Skipton's ties from 1988. Corner falls at the intersection of North-South and East-West centerlines. Accepted position as the best evidence and updated ties.

County Coordinates obtained by GPS
 NAD 83 (1996 Adjustment)
 N-110966.777
 E-563884.319

NOTE: It is recommended that the stone monument referenced in County Surveyor's Book 1, Page 59 and later found in Soderstrum's 1914 survey, be searched for during any future State Highway 95 construction in this area.

CERTIFICATE OF LOCATION OF GOVERNMENT CORNER

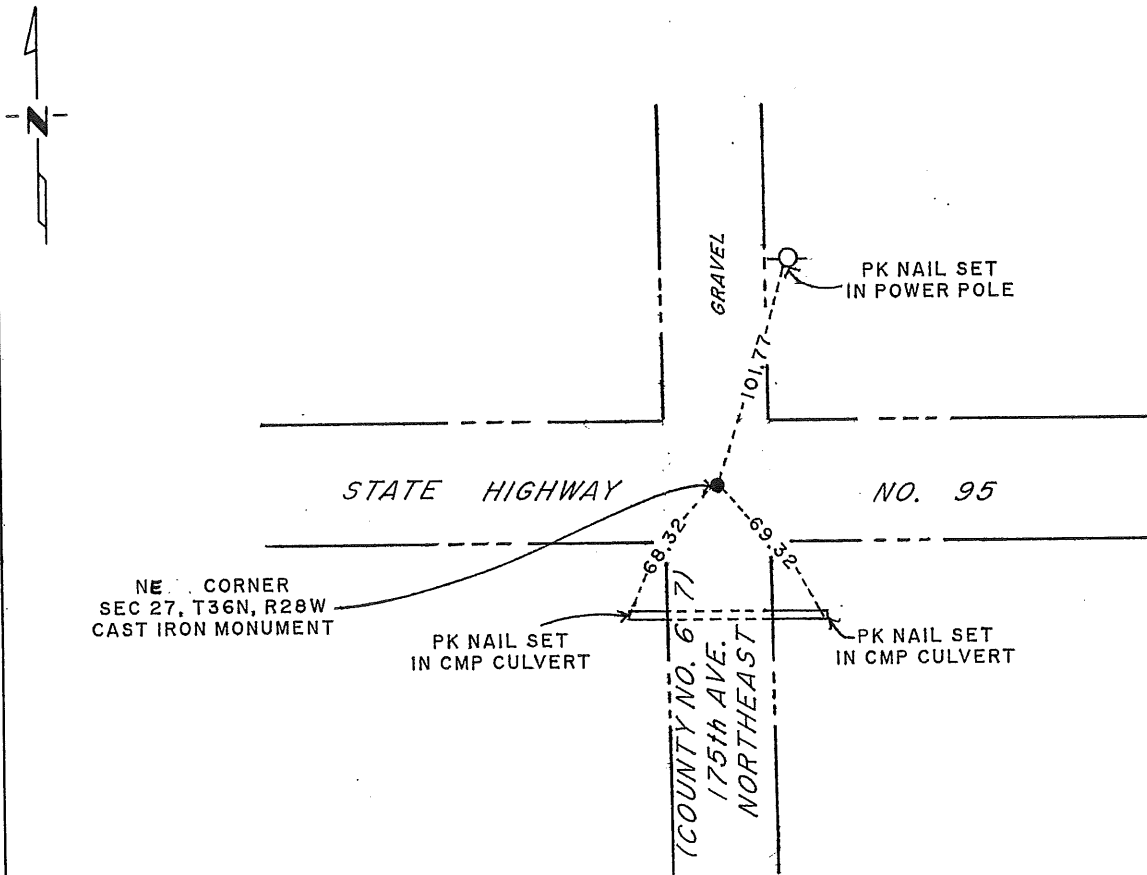
NORTHEAST Corner of Section 27, Township 36N, Range 28W, 4TH P.M.

STATE OF MINNESOTA, County of BENTON

At the corner location shown on the sketch:

- On _____ found a _____
DATE _____
- left monument as found, lowered monument, removed monument (explain)
- On 19 SEPT 1988 placed a CAST IRON MONUMENT
DATE _____

SKETCH OF REFERENCE TIES



Statement of evidence relative to this corner location is on back of page.

I hereby certify that this document and the data contained herein was prepared by me or under my direct supervision.

Bruce W. Skipton
SIGNATURE

12-19-87
DATE

Registration No. 17768

- Land Surveyor, Professional Engineer
- County Surveyor, County Engineer

OFFICE OF THE COUNTY RECORDER

County of _____

I hereby certify that this document was filed in the Co. Recorders office at _____ M. on the _____ day of _____ A.D., 19 _____

County Recorder _____

By _____, Deputy

DOCUMENT NO. _____

Statement of Evidence:

NORTHEAST CORNER, SECTION 27, T36N, R28W, 4TH P.M.

1. The original survey was accomplished in July 1855 by Oscar F. Davis.
2. Benton County's old surveyor's books indicated iron in 1924 at said corner.
3. Milner W. Carley indicated an iron, no date given, at said corner.
4. MNDOT R/W map for T.H. 95 indicated a railroad spike with MNDOT stationing and reference ties at said corner.
5. September 12, 1988, Paul E. Wellen & Associates Inc., searched for said corner and found nothing. The reference ties were also missing. We relocated said corner by using MNDOT T.H. 95 stationing. On September 19, 1988, we set a cast iron monument at this location.

191328

OFFICE OF
BENTON COUNTY RECORDER
BENTON COUNTY, MN
CERTIFIED TO BE FILED
AND/OR RECORDED ON

JAN 20 8 55 AM '89

ALICE S. ENGELMEYER
COUNTY RECORDER

BY *Ch* DEPUTY