

CERTIFICATE OF LOCATION OF GOVERNMENT CORNER

EAST 1/4 Corner of Section 10, Township 38, Range 30, 4TH P.M.

STATE OF MINNESOTA, County of BENTON

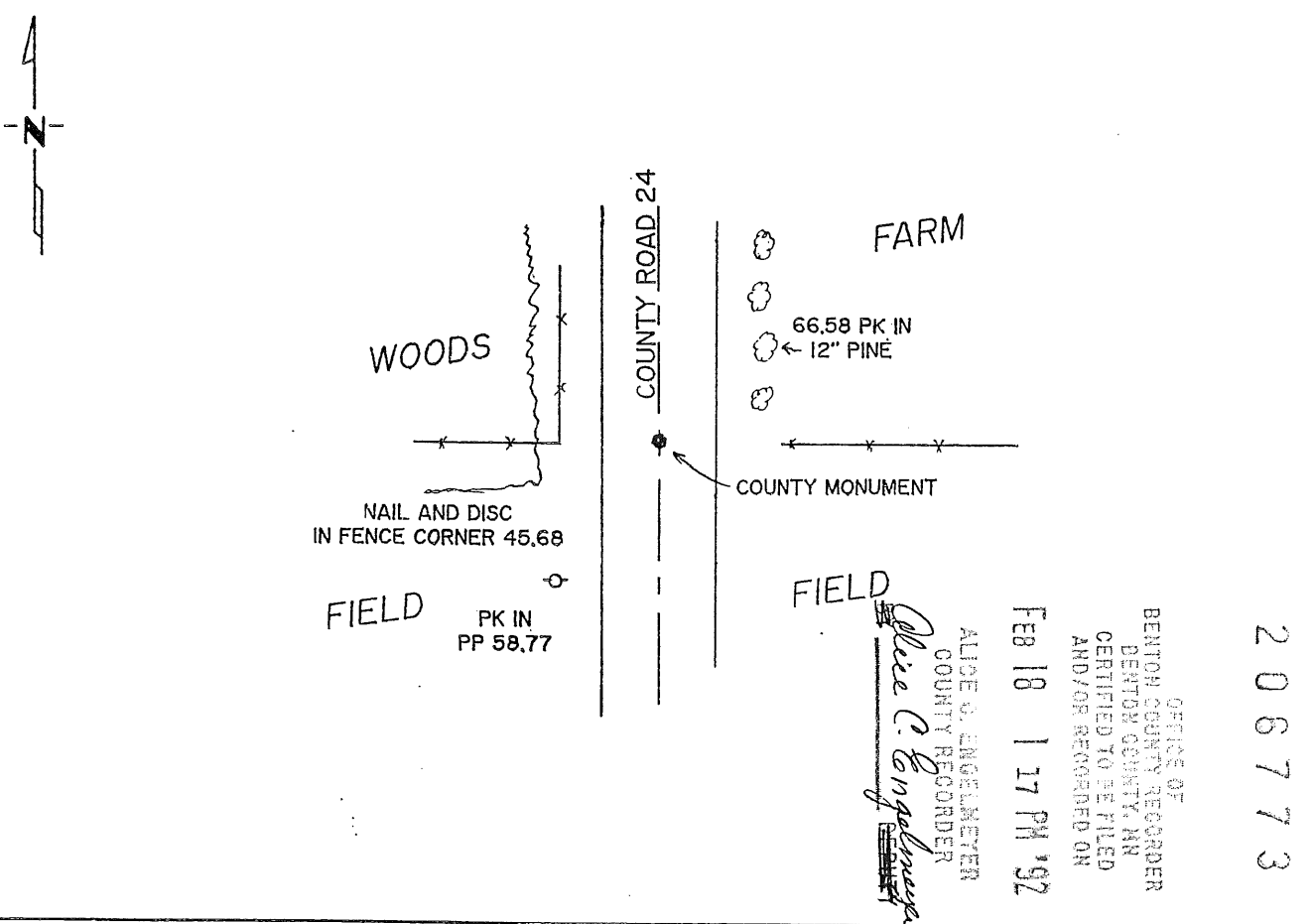
At the corner location shown on the sketch:

On 24 SEPT 90 found a 1/2" IRON PIPE
DATE

left monument as found, lowered monument, removed monument (explain)

On 24 SEPT 91 placed a COUNTY MONUMENT
DATE

SKETCH OF REFERENCE TIES



ALICE C. ENGELMEYER
COUNTY RECORDER

FEB 18 1 17 PM '92

OFFICE OF
BENTON COUNTY RECORDER
BENTON COUNTY, MN
CERTIFIED TO BE FILED
AND/OR RECORDED ON

206773

Statement of evidence relative to this corner location is on back of page.

I hereby certify that this document and the data contained herein was prepared by me or under my direct supervision.

[Signature] 2/23/92
SIGNATURE DATE

Registration No. 10461
 Land Surveyor, Professional Engineer
 County Surveyor, County Engineer

OFFICE OF THE COUNTY RECORDER
 County of _____

I hereby certify that this document was filed in the Co. Recorders office at _____ .M. on the _____ day of _____ A.D., 19 _____

County Recorder _____
 By _____, Deputy
 DOCUMENT NO. _____

Statement of Evidence:

East corner of Section 10, Township 38 North, Range 30 West, of the 4th Principal Meridian.

1. The G.L.O. survey was done in 1852 by Edwin Jones.
2. The County Surveyors records in Book 2, page 158 shows a "iron" at this corner.
3. On 7/90 Regan Land Surveyors, Inc. searched and dug the area and found a 1/2 inch iron pin at this corner and made ties.
4. On September 24, 1990, Paul E. Wellen & Associates found a 1/2 inch iron pipe and placed a County Monument.

CERTIFICATE OF LOCATION OF GOVERNMENT CORNER

EAST $\frac{1}{4}$ Corner of Section 10, Township 38, Range 30, 4th P.M.

STATE OF MINNESOTA, County of BENTON

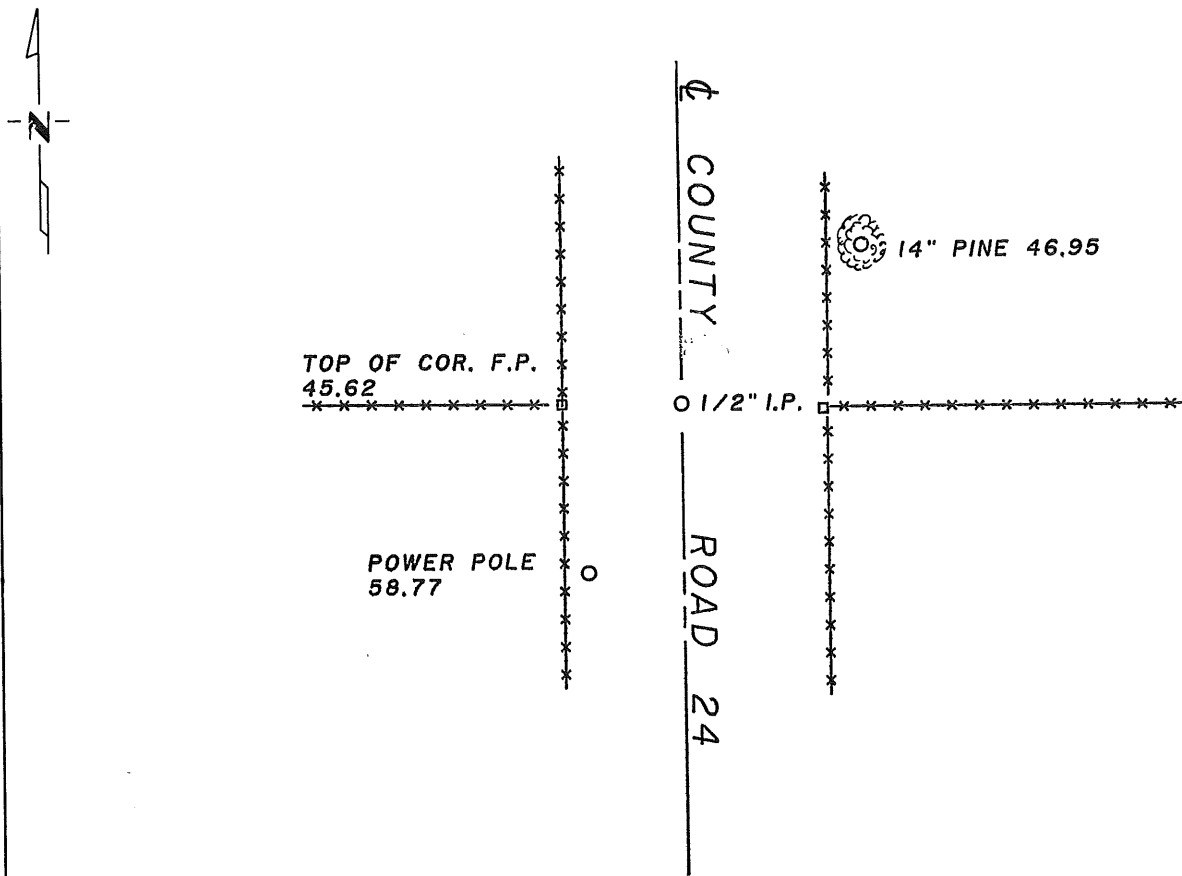
At the corner location shown on the sketch:

On 7/13/90 found a $\frac{1}{2}$ inch pin in center line of north-south road and
DATE
fence lines east-west

left monument as found, lowered monument, removed monument (explain)

On _____ placed a _____
DATE

SKETCH OF REFERENCE TIES



Statement of evidence relative to this corner location is on back of page.

I hereby certify that this document and the data contained herein was prepared by me or under my direct supervision.

David P. Regan 3/13/91
SIGNATURE DATE

Registration No. 12236

- Land Surveyor, Professional Engineer
- County Surveyor, County Engineer

OFFICE OF THE REGISTER OF DEEDS

County of _____

I hereby certify that this document was filed in the Reg. of Deeds office at _____ .M. on the _____ day of _____ A.D., 19 _____

Register of Deeds _____

By _____, Deputy

DOCUMENT NO. _____

Statement of Evidence:

The G.L.O. survey was done in 1852 by Edwin James.

The County Surveyors records in Book 2, page 158 shows a "iron" at this corner.

On 7/90, Regan Land Surveyors, Inc. searched and dug the area and found a $\frac{1}{2}$ inch iron pin at this corner and made ties.

201751

OFFICE OF
BENTON COUNTY RECORDER
BENTON COUNTY, MN
CERTIFIED TO BE FILED
AND/OR RECORDED ON

MAR 19 12 17 PM '91

ALICE C. ENGELMEYER
COUNTY RECORDER

BY Jed DEPUTY