

Certified, Filed and or Recorded on
Nov. 05, 2008 AT 08:17AM

Signed: MJ
MARILYN J NOVAK G V I
BENTON COUNTY MINNESOTA
MARILYN J NOVAK
COUNTY RECORDER

CERTIFICATE OF LOCATION OF GOVERNMENT CORNER

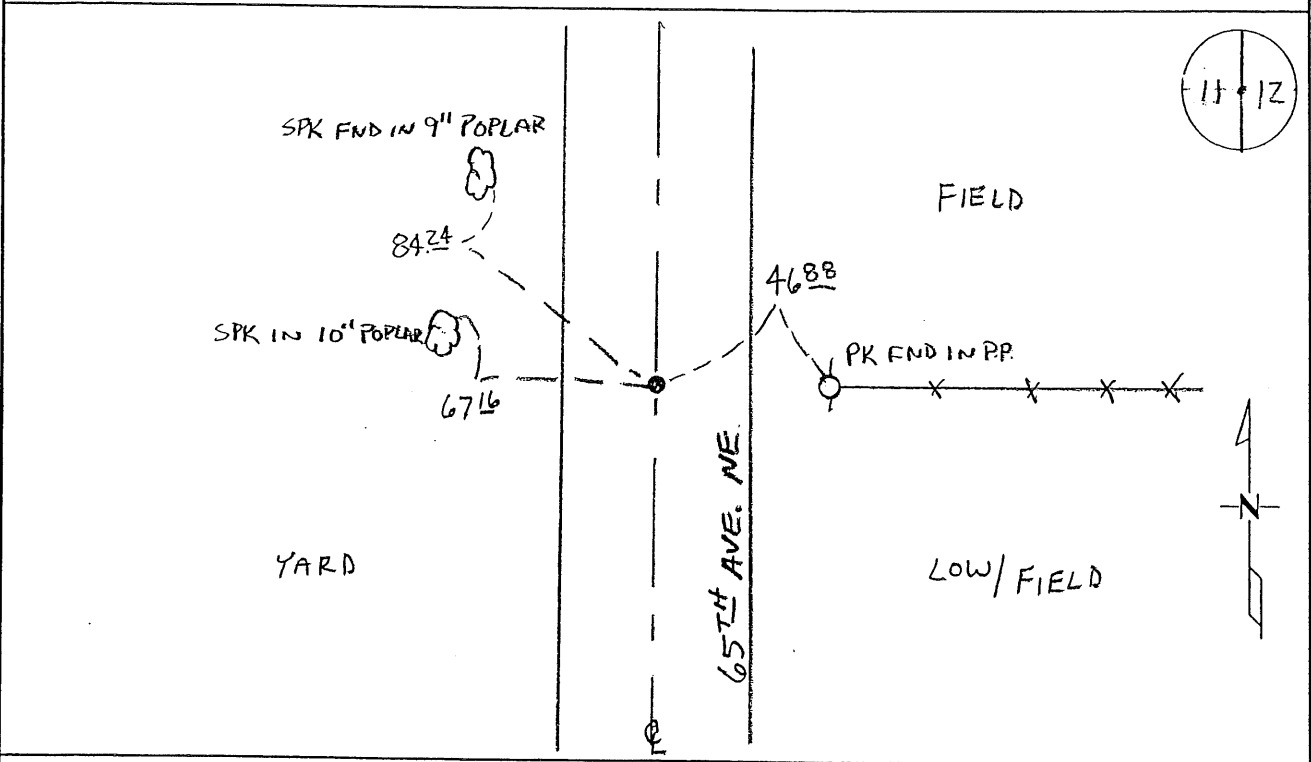
EAST QUARTER Corner of Section 11, Township 38, Range 30
4TH Principal Meridian, State of Minnesota, County of Benton

At the corner location shown on the sketch:

On 10-20-08 found a CAST IRON MONUMENT

left monument as found lowered monument removed monument (explain)

On _____ placed an _____



Statement of evidence for this corner location is on back of this page.

I hereby certify that this document was researched and prepared by me or under my direct supervision and that I am a licensed Land Surveyor under the laws of the State of Minnesota.

Signature [Handwritten Signature]
Deputy County Surveyor
License No. 43932

Date: 11/3/08

Benton County Surveyor's Office
 Chris Hoglund, Deputy County Surveyor
 Minnesota License No. 43932

Statement of Evidence:

C113

East Quarter Corner of Section 11, Township 38 North, Range 30 West, Graham Township, 4th Principal Meridian, Benton County, Minnesota.

- 1852 Original US General Land Office survey set a wood post at this location and bearing trees were recorded.
- | | | |
|------------|--------|----------|
| 7" Aspen | S 53 E | 5 links |
| 7" Bur Oak | S 22 W | 13 links |
- 1990 William Lunser, LS 9394, set a cast iron monument at the intersection of road north/south and a fence line east. He filed a Certificate of Location (#201525). He notes a distance of 2704.50 feet to both the NE Cor Sec 11 and the SE corners Sec 11.
- 2002 No resurvey information was found on this corner in the Benton County records.
- 2003 Westwood Professional Services, Inc. found CIM and measured 2704.72 feet to the Northeast corner and 2704.35 feet to the Southeast corner of Section 11. Corner was found to be 12.54 feet west of a straight line between section corners. Coordinates Obtained by GPS
 NAD 83 (1996 Adjustment)
 N- 188441.570
 E- 505049.765
- 2008 Westwood Professional Services, Inc. found a CIM and measured 2704.72 feet to the Northeast corner and 2704.35 feet to the Southeast corner of Section 11. Corner was found to be 12.54 feet west of a straight line between section corners. CIM was found on the centerline of 65th Ave. NE and on line with a fence line east. CIM fits 1990 Lunser ties. CIM is accepted as marking the obliterated position for this corner. County coordinates obtained by GPS coincide with 2003 position.

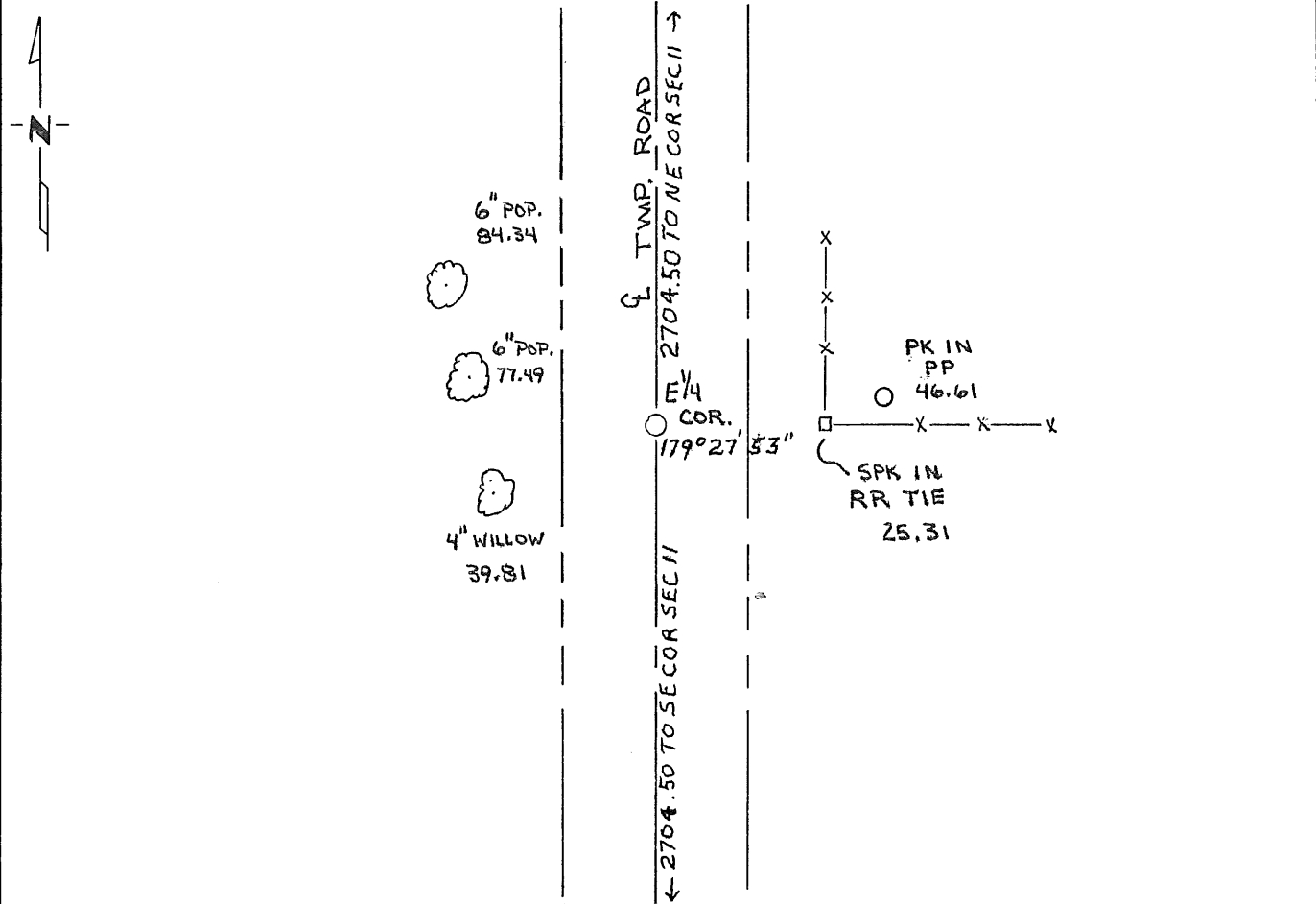
CERTIFICATE OF LOCATION OF GOVERNMENT CORNER

EAST QUARTER Corner of Section 11, Township 38, Range 30, 4th P.M.
STATE OF MINNESOTA, County of BENTON

At the corner location shown on the sketch:

- On _____ found a _____
DATE
- left monument as found, lowered monument, removed monument (explain)
- On 6-26-90 placed a CAST IRON MONUMENT
DATE

SKETCH OF REFERENCE TIES



Statement of evidence relative to this corner location is on back of page.

I hereby certify that this document and the data contained herein was prepared by me or under my direct supervision.

William J. L... 2/14/91
SIGNATURE DATE

Registration No. 9394

Land Surveyor, Professional Engineer
 County Surveyor, County Engineer

OFFICE OF THE REGISTER OF DEEDS
County of _____

I hereby certify that this document was filed in the Reg. of Deeds office at _____ .M. on the _____ day of _____ A.D., 19 ____

Register of Deeds _____
By _____, Deputy
DOCUMENT NO. _____

Statement of Evidence:

Benton County Records showed no reference to this corner other than U.S. Government Survey.

On 6-26-90 searched the area and found no evidence of an existing monument. Placed a cast iron monument at the centerline of Township Road and a fence line to the East. Measurements to the NE Corner and SE Corner of Section 11 support this location.

201525

OFFICE OF
BENTON COUNTY RECORDER
BENTON COUNTY, MN
CERTIFIED TO BE FILED
AND/OR RECORDED ON

FEB 28 12 23 PM '91

ALICE G. ENGELMEYER
COUNTY RECORDER

BY Jan DEPUTY