

1-0

A 362865

Certified, Filed and or Recorded on
JAN. 06, 2009 AT 02:57PM

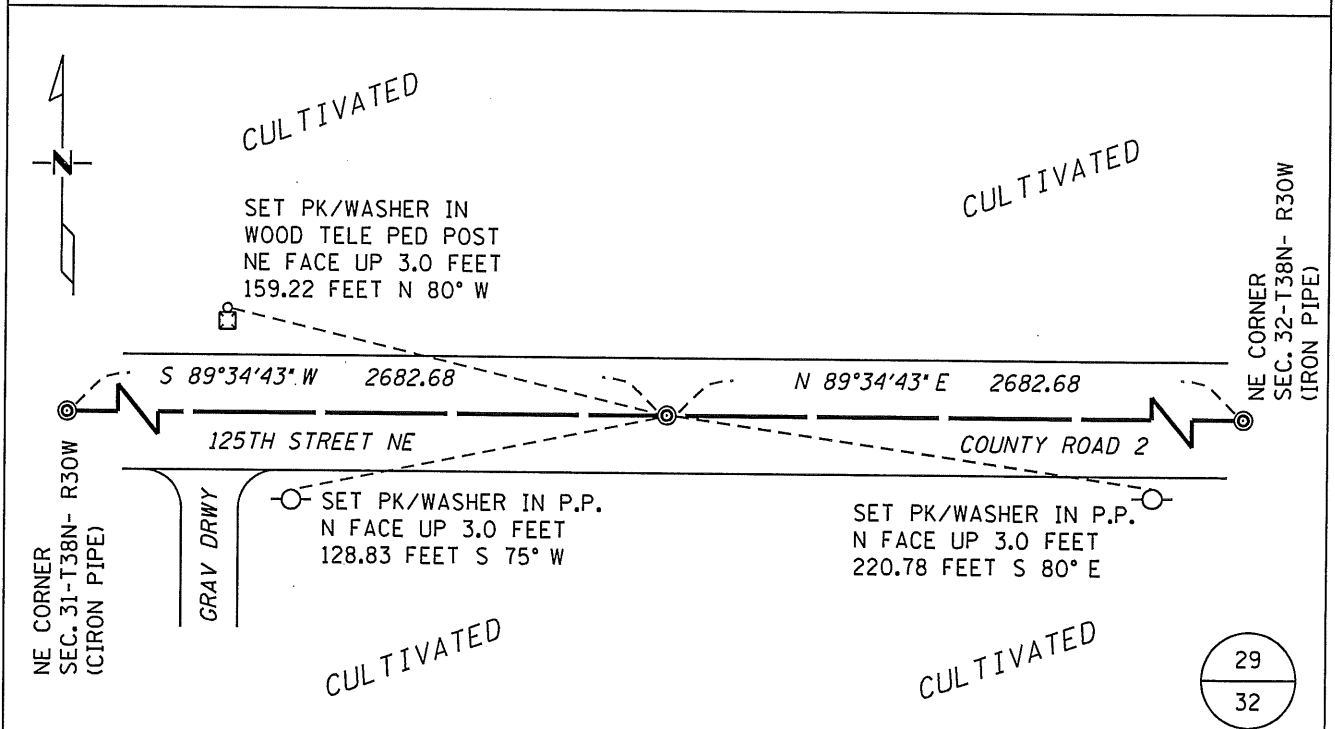
Signed: CK
MARILYN J NOVAK B V I
BENTON COUNTY MINNESOTA
MARILYN J NOVAK
COUNTY RECORDER

CERTIFICATE OF LOCATION OF GOVERNMENT CORNER

North Quarter Corner of Section 32, Township 38 N, Range 30 W
4TH Principal Meridian, State of Minnesota, County of Benton

At the corner location shown on the sketch:

- On 8-14-2008 found a Nothing
DATE
- left monument as found lowered monument removed monument (explain)
- On 8-14-2008 placed a 1/2" Iron Pipe with cap stamped "DELEO 40341"
DATE



Statement of evidence for this corner location is on back of this page.

I hereby certify that this document was researched and prepared by me or under my direct supervision.

Signature Saul J. Debo Date 10-3-2008 License No. 40341

Title: Land Surveyor Professional Engineer County Surveyor County Engineer

Statement of Evidence:

C321

North Quarter Corner of Section 32, Township 38 North, Range 30 West, Graham Township, 4th Principal Meridian, Benton County, Minnesota.

- 1852 Original US General Land Office survey set a wood post at this location and bearing trees were recorded.
 10" Aspen N 54 W 630 links
- 1963 The Minnesota Dept. of Natural Resources (fka MN Conservation Dept.) performed a survey in Sections 29 and 30 for the Wisneski WMA (File No. G892-X). They surveyed the north line of Sec. 32, but make no reference to the NQ corner of Sec. 32. The distance between the NE corner of Sec. 31 (a set spike at an assumed position) and NE corner of Sec. 32 (a found iron pipe) was recorded to be 5365 feet (dbl. chained).
- 2002 No resurvey information was found on this corner in the Benton County records.
- 2004 Certificate of Survey by Barry Dorniden, LS 23044, shows PK Nail set for the corner at the apparent lost position, midway and on line between section corners. His notes reflect a distance of 5365.36 feet between section corners E & W.
- 2008 Sam DeLeo, LS 40341, did not find anything in place at Dorniden's 2004 position. The distance between the found iron pipes at the NE of Sec. 31 and NE of Sec. 32 was measured to be 5365.36 feet. Dorniden's position was determined to be calculated at the lost position for the corner. No other information to perpetuate the location for the corner could be found at this time. A ½" dia. iron pipe with cap "DELEO 40341" was set at the lost position. Reference ties were set and recorded. Coordinates were established.

County Coordinates Obtained by GPS
 NAD 83 (1996 Adjustment)
 N- 169710.460
 E- 487020.147