

Certified, Filed and or Recorded on
Nov. 04, 2008 AT 01:13PM

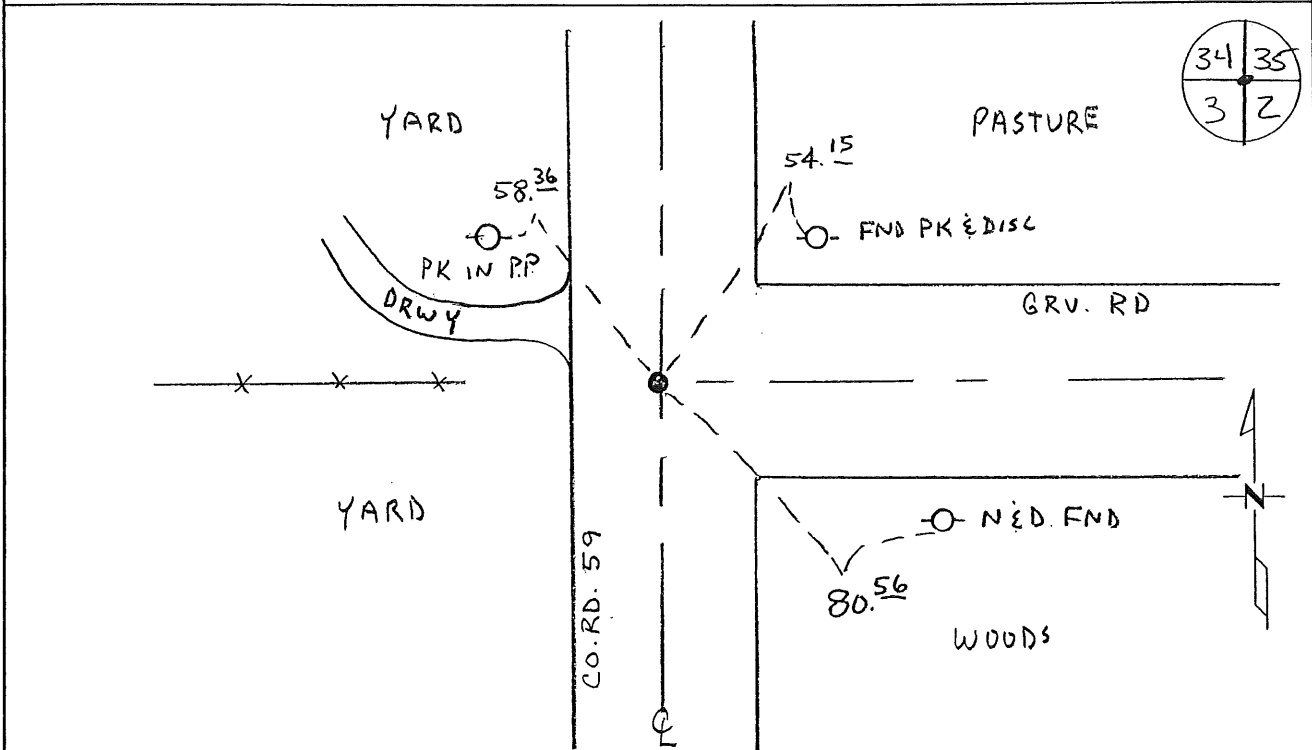
Signed: BW
MARILYN J NOVAK G V I
BENTON COUNTY MINNESOTA
MARILYN J NOVAK
COUNTY RECORDER

CERTIFICATE OF LOCATION OF GOVERNMENT CORNER

NORTHEAST Corner of Section 3, Township 38, Range 30
4TH Principal Meridian, State of Minnesota, County of Benton

At the corner location shown on the sketch:

- On 10-15-08 found a CAST IRON MONUMENT
- left monument as found lowered monument removed monument (explain)
- On _____ placed an _____



Statement of evidence for this corner location is on back of this page.

I hereby certify that this document was researched and prepared by me or under my direct supervision and that I am a licensed Land Surveyor under the laws of the State of Minnesota.

Signature [Signature]
Deputy County Surveyor
License No. 43932

Date: 11/3/08

Statement of Evidence:

C032

Northeast Corner of Section 3, Township 38 North, Range 30 West, Graham Township,
 4th Principal Meridian, Benton County, Minnesota.

- 1849 Original US General Land Office set a wood post at this location and bearing trees were recorded
 12" Poplar N 40 1/2 E 397 links
- 1897 Morrison County Surveyor, notes in Surveyor's Record Book A, page 58, (Morrison County) shows survey of Section 34, 39-30. Notes state found Government corner.
- 1908 County Surveyor's Record Book 2, page 164, MJ Cleveland notes a hub with the following tie:
 10" Blk Oak S 19 1/4 E 114 links
- 1914 Phil Randall, Morrison County Surveyor, notes in County Surveyor's Record Book A, page 167, (Morrison County) a survey of Section 35, 39-30. Survey notes a stake found at the corner location and also one of the old Government witness trees.
- 1931 County Engineer's Notebook No. 81 for survey of Graham aid road running south to north. Corner is shown as a hub with town road east and fence line west. Ties:
 FP NE 36.5
 TP SE 41.0
 Survey terminated at this corner. (Ties also listed in Book 2, page 164)
- 1963 County Engineer's Notebook No. 285 contains a road survey for CR 22 running south to north on section line. Corner is shown as a spike set in center of road with town road east. Ties:
 PP NE 54.35
 TP SE 80.5
- 1990 Paul Wellen, LS 10461, found a 1" solid pin, 24" long, in the centerline of county Road 23 running south, Morrison County Road running north, and town road east. He replaced with a cast iron monument and filed a Certificate of Location (Doc. No. 199554).
- 2008 Westwood Professional Services, Inc. found a CIM at the intersection of the centerline of CR 59 north/south, centerline of township road east and a fence line west. CIM fit one remaining 1990 Wellen tie and both 1963 County Engineer's ties. CIM is accepted as marking the obliterated position for this corner location. County Coordinates Obtained by GPS
 NAD 83 (1996 Adjustment)
 N-196440.698
 E-499433.513

CERTIFICATE OF LOCATION OF GOVERNMENT CORNER

Northeast Corner of Section 3, Township 38 N, Range 30 N, 4th P.M.

STATE OF MINNESOTA, County of Benton

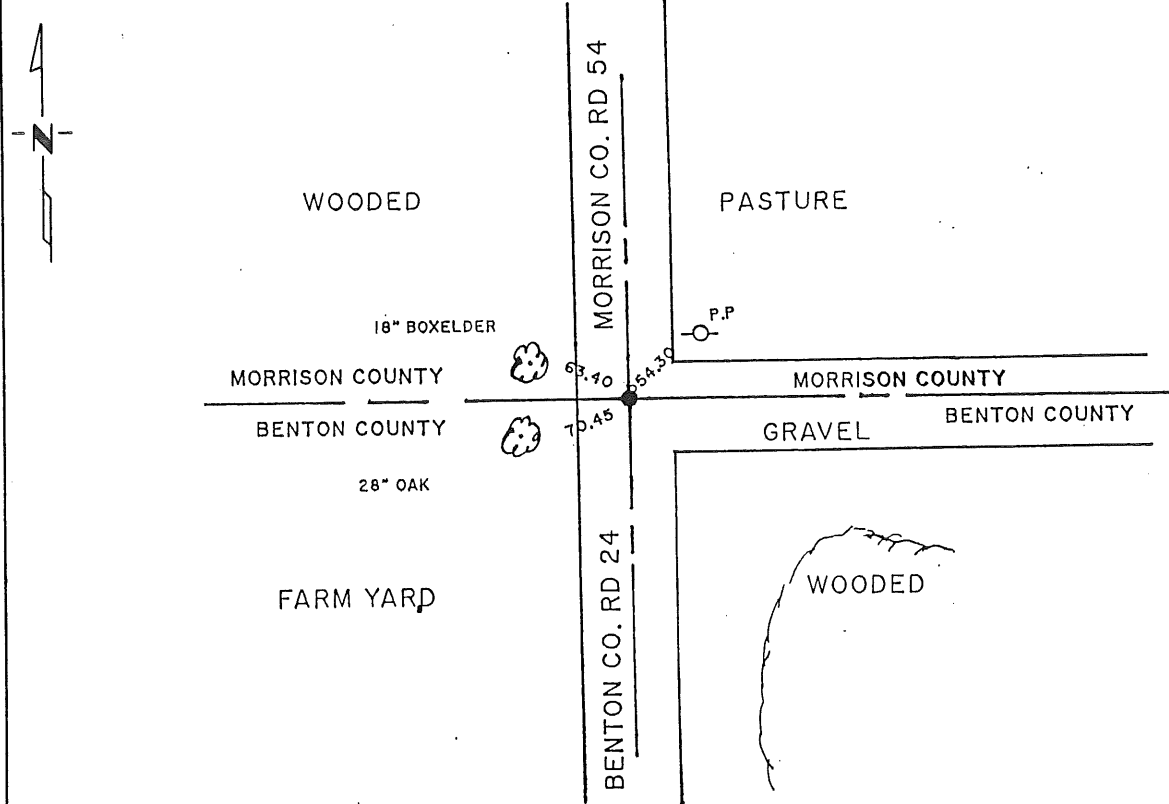
At the corner location shown on the sketch:

On 6/7/90 found a 1" x 24" solid iron pin
DATE

left monument as found, lowered monument, removed monument (explain)

On 6/7/90 placed a cast iron monument
DATE

SKETCH OF REFERENCE TIES



Statement of evidence relative to this corner location is on back of page.

I hereby certify that this document and the data contained herein was prepared by me or under my direct supervision.

John E. Miller 7/30/90
SIGNATURE DATE

Registration No. 10461

- Land Surveyor, Professional Engineer
- County Surveyor, County Engineer

OFFICE OF THE COUNTY RECORDER

County of _____

I hereby certify that this document was filed in the Co. Recorders office at _____ M. on the _____ day of _____ A.D., 19 _____

County Recorder _____

By _____, Deputy

DOCUMENT NO. _____

Statement of Evidence:

Northeast corner, Section 3, Township 38
North, Range 30 West, 4th Principal Meridian.

1. During the G.L.O. Survey of 1849, Mr. Theodore Conkey, a U.S. Deputy Surveyor set a wood post to mark this corner.
2. A search of the Benton County Surveyor and Engineer records provided no information to the location of this corner.
3. On January 20, 1914, Phil S. Randall, Morrison County Surveyor placed a stake at this corner.
4. On June 7, 1990, Paul E. Wellen & Associates, Inc. found a 1 inch solid iron pin, 24" long at the center line intersections of Benton County Road 24 to the south, Morrison County Road to the north and a gravel road to the east. We removed said iron pin and placed a cast iron monument at its location. We also established new reference ties as indicated.

1 9 9 5 5 4

OFFICE OF
BENTON COUNTY RECORDER
BENTON COUNTY, MN
CERTIFIED TO BE FILED
AND/OR RECORDED ON

SEP 27 11 32 AM '90

ALICE C. ENGELMEYER
COUNTY RECORDER

Alice C. Engelmeier
~~DEPUTY~~