

Certified, Filed and or Recorded on
Nov. 05, 2008 AT 08:09AM

Signed: JU
MARILYN J NOVAK G V I
BENTON COUNTY MINNESOTA
MARILYN J NOVAK
COUNTY RECORDER

CERTIFICATE OF LOCATION OF GOVERNMENT CORNER

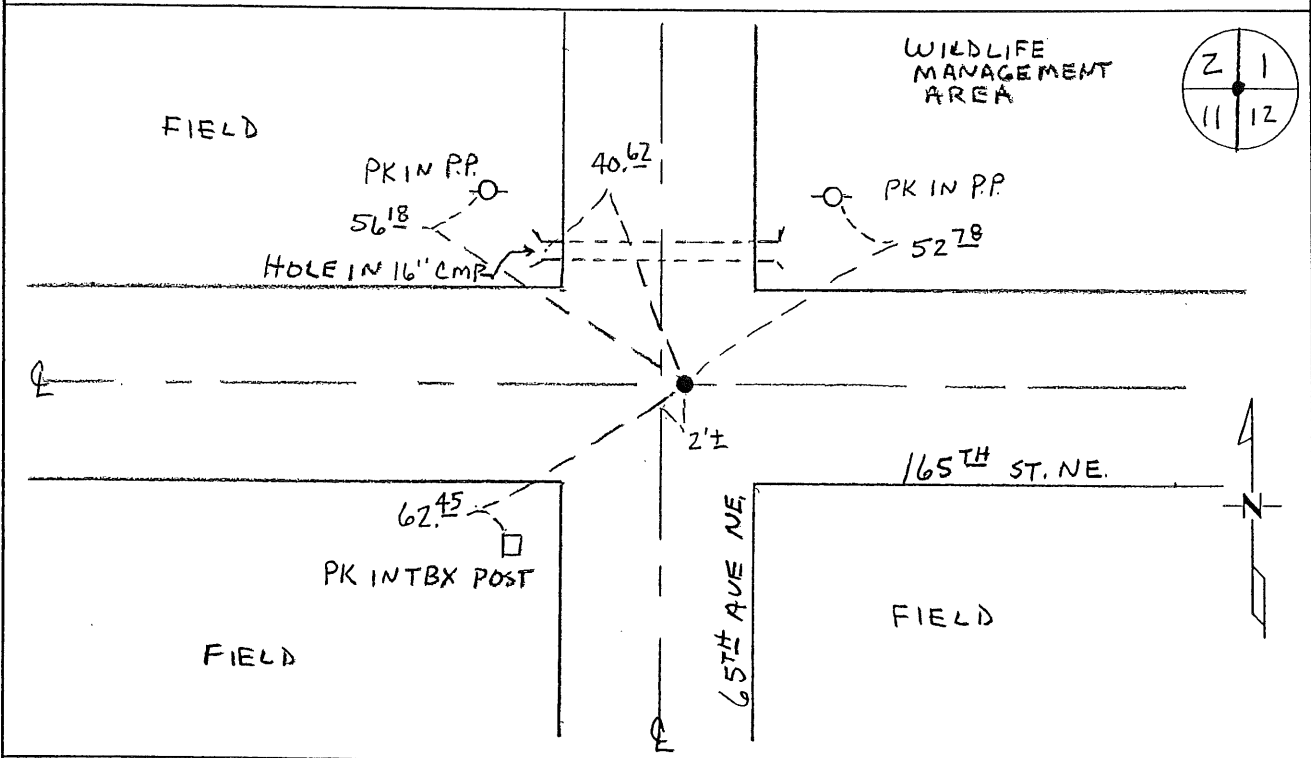
NORTHEAST Corner of Section 11, Township 38, Range 30
4TH Principal Meridian, State of Minnesota, County of Benton

At the corner location shown on the sketch:

On 10-20-08 found a CAST IRON MONUMENT

left monument as found lowered monument removed monument (explain)

On _____ placed an _____



Statement of evidence for this corner location is on back of this page.

I hereby certify that this document was researched and prepared by me or under my direct supervision and that I am a licensed Land Surveyor under the laws of the State of Minnesota.

Signature [Handwritten Signature]
Deputy County Surveyor
License No. 43932

Date: 11/3/08

Benton County Surveyor's Office
 Chris Hoglund, Deputy County Surveyor
 Minnesota License No. 43932

Statement of Evidence:

C112

Northeast Corner of Section 11, Township 38 North, Range 30 West, Graham Township,
 4th Principal Meridian, Benton County, Minnesota.

- 1852 Original US General Land Office set a wood post at this location and bearing trees were recorded.
- | | | |
|-----------|--------|----------|
| 10" Aspen | N 74 W | 32 links |
| 10" Aspen | S 13 E | 35 links |
- 1908 County Surveyor's Record Book 2, page 162, shows corner was used M.J. Cleveland to set the East ¼ corner of Section 2 lost. Gives the following tie:
- | | | |
|------------------|----------|-----------|
| 3'x4' Stone "S1" | N 68 ½ E | 123 links |
|------------------|----------|-----------|
- 1939 County Engineer's Notebook No. 128 contains survey of CAR 22 running east to west on section line. Corner is shown as a hub set in center of 4-way road intersection. Ties:
- | | | |
|----|----|-------|
| FP | SW | 60.45 |
| FP | SE | 62.95 |
- 1962 County Highway notes an iron at the corner with the following reference ties:
- | | | |
|----|----|-------|
| PP | NE | 54.75 |
| PP | NW | 54.2 |
| TP | SW | 48.5 |
- 1964 County Engineer's Notebook No. 276 contains a road survey for CSAH No. 22 running west to east on section line. Notes show corner marked by an iron in center of road with town road north and south. Ties are the same as listed in 1974 below.
- 1974 County Surveyor's Record Book 2, page 178, notes the following reference ties to an iron:
- | | | |
|----|----|-------|
| PP | NE | 55.6 |
| PP | NW | 54.85 |
- 1988 Bruce Skipton, LS, found a 1" I.M. (axle) at the centerline of roads east/west and north/south which fit with the 1974 ties. He lowered the found monument and set a cast iron monument over it. He filed a Certificate of Location (#191231).
- 2003 Westwood Professional Services, Inc. found CIM and checked for the old tie to the boulder, but could not find it as it falls in the road ditch and was probably graded out. County Coordinates Obtained by GPS
 NAD 83 (1996 Adjustment)
 N- 191145.637
 E- 504990.558
- 2008 Westwood Professional Services, Inc. found CIM fitting 1988 Skipton ties. CIM is accepted as marking the obliterated position for this corner. County Coordinates Obtained by GPS coincide with 2003 position.

CERTIFICATE OF LOCATION OF GOVERNMENT CORNER

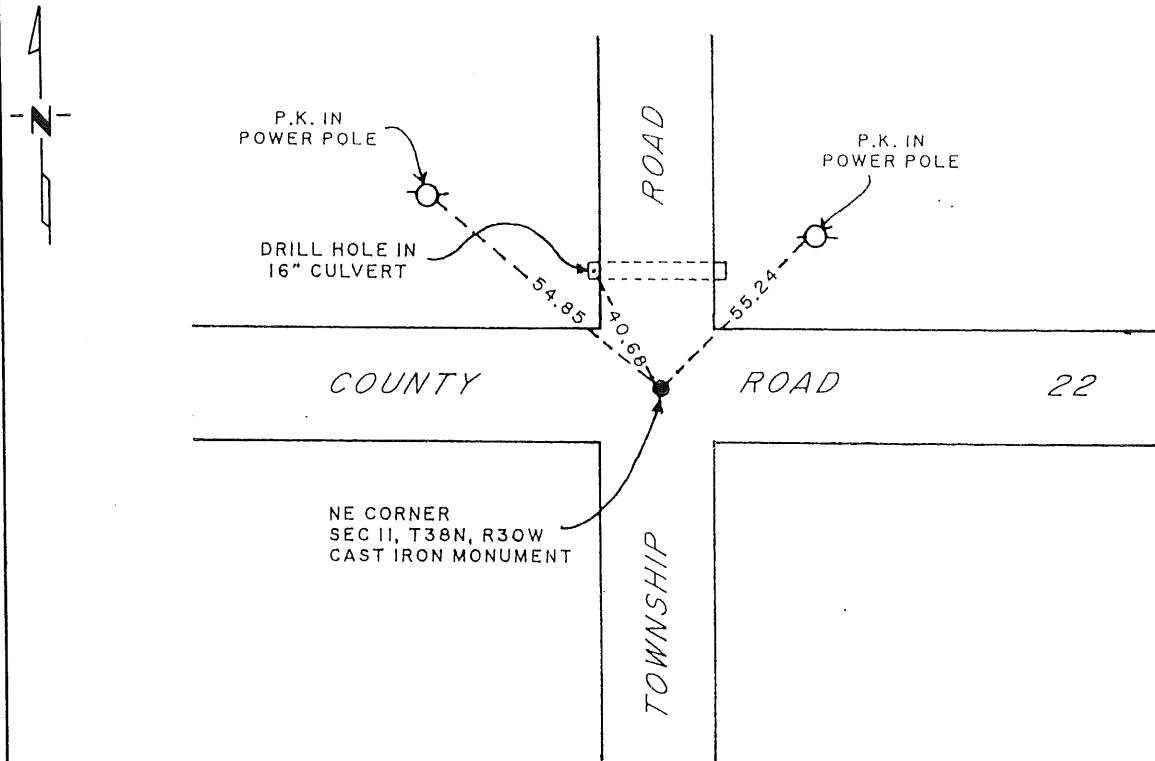
NORTHEAST Corner of Section 11, Township 38N, Range 30W, 4TH P.M.

STATE OF MINNESOTA, County of BENTON

At the corner location shown on the sketch:

- On 8 JULY 1988 found a 1" Iron Monument in Center Line
DATE
of the North-South Twp. Rd. & East-West Co. Rd.
 left monument as found, lowered monument, removed monument (explain)
- On 15 JULY 1988 placed a CAST IRON MONUMENT over 1" Iron Monument
DATE

SKETCH OF REFERENCE TIES



Statement of evidence relative to this corner location is on back of page.

I hereby certify that this document and the data contained herein was prepared by me or under my direct supervision.

Bruce W. Skipton Nov 30 88
SIGNATURE DATE

Registration No. 17768

- Land Surveyor, Professional Engineer
- County Surveyor, County Engineer

OFFICE OF THE COUNTY RECORDER

County of _____

I hereby certify that this document was filed in the Co. Recorders office at _____ .M. on the _____ day of _____ A.D., 19 _____

County Recorder _____

By _____, Deputy

DOCUMENT NO. _____

Statement of Evidence:

1. The original survey was accomplished in September and October 1852 by Edwin James Jr.
2. The old County Surveyor's Books indicated an Iron, with reference ties of a power pole NE 55.6 and a power pole NW 54.85.
3. On July 8, 1988, Paul E. Wellen and Assoc. located a 1" Iron Monument with above reference ties. We dug with a backhoe under said Iron Monument and found nothing else. We lowered said Iron and placed a Cast Iron Monument flush with the existing bituminous surface and made new reference ties as indicated.

191231

OFFICE OF
BENTON COUNTY RECORDER
BENTON COUNTY, MN
CERTIFIED TO BE FILED
AND/OR RECORDED ON

JAN 12 11 52 AM '89

ALICE G. ENBELMEYER
COUNTY RECORDER

BY Jew DEPUTY