

Certified, Filed and or Recorded on
Nov. 04, 2008 AT 12:37PM

Signed: BW
MARILYN J NOVAK G V I
BENTON COUNTY MINNESOTA
MARILYN J NOVAK
COUNTY RECORDER

CERTIFICATE OF LOCATION OF GOVERNMENT CORNER

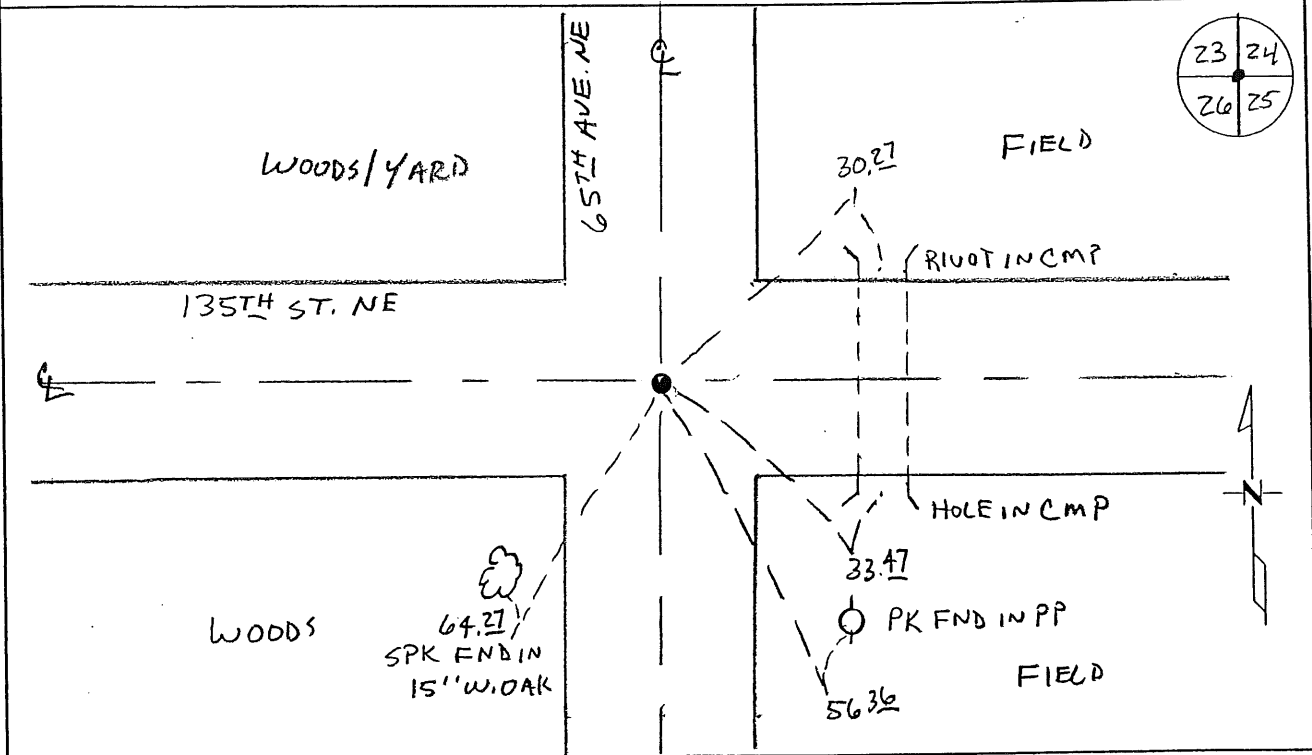
NORTHEAST Corner of Section 26, Township 38, Range 30
4TH Principal Meridian, State of Minnesota, County of Benton

At the corner location shown on the sketch:

On 10-22-08 found a CAST IRON MONUMENT

left monument as found lowered monument removed monument (explain)

On _____ placed an _____



Statement of evidence for this corner location is on back of this page.

I hereby certify that this document was researched and prepared by me or under my direct supervision and that I am a licensed Land Surveyor under the laws of the State of Minnesota.

Signature [Handwritten Signature]
Deputy County Surveyor
License No. 43932

Date: 11/3/08

Benton County Surveyor's Office
 Chris Hoglund, Deputy County Surveyor
 Minnesota License No. 43932

Statement of Evidence:

C262

Northeast Corner of Section 26, Township 38 North, Range 30 West, Graham Township,
 4th Principal Meridian, Benton County, Minnesota.

- 1852 Original US General Land Office survey set a wood post at this location and bearing trees were recorded.
- | | | |
|-----------|--------|----------|
| 12" Aspen | N 76 E | 27 links |
| 10" Aspen | S 67 W | 8 links |
- 1944 County Engineer's Notebook No. 164 contains a road survey for CAR 25 running south to north on section line. Corner is shown marked by a hub set in center of road with town road east and west. Ties same as listed below in 1949.
- 1949 H. G. Elletson, County Engineer, notes the following reference ties to a hub:
- | | | |
|-----------|----|------|
| 12" W Oak | NW | 95.9 |
| 12" W Oak | SW | 82.1 |
- 1961 County Surveyor's Record Book 2, page 208, notes the following reference ties to an iron:
- | | | |
|--------|----|------|
| PP | SE | 70.0 |
| Cor FP | SW | 47.2 |
- (Notation in Notebook No. 164 shows iron set.)
- 1983 David Regan, LS 12236, found a 1" Solid Pin over a wood stake in the centerline of roads north/south/east/west. He replaced it with a cast iron monument and filed a Certificate of Location (#166050).
- 2002 Westwood Professional Services, Inc. found a CIM.
 County Coordinates Obtained by GPS to CIM:
 NAD 83 (1996 Adjustment)
 N-175064.929
 E-505597.747
- 2008 Westwood Professional Services, Inc. found a CIM at the intersection of roads north/south/east/west fitting 1983 Regan ties. CIM is accepted as marking the obliterated position for this corner. Coordinates obtained by GPS coincide with 2002 position.

CERTIFICATE OF LOCATION OF GOVERNMENT CORNER

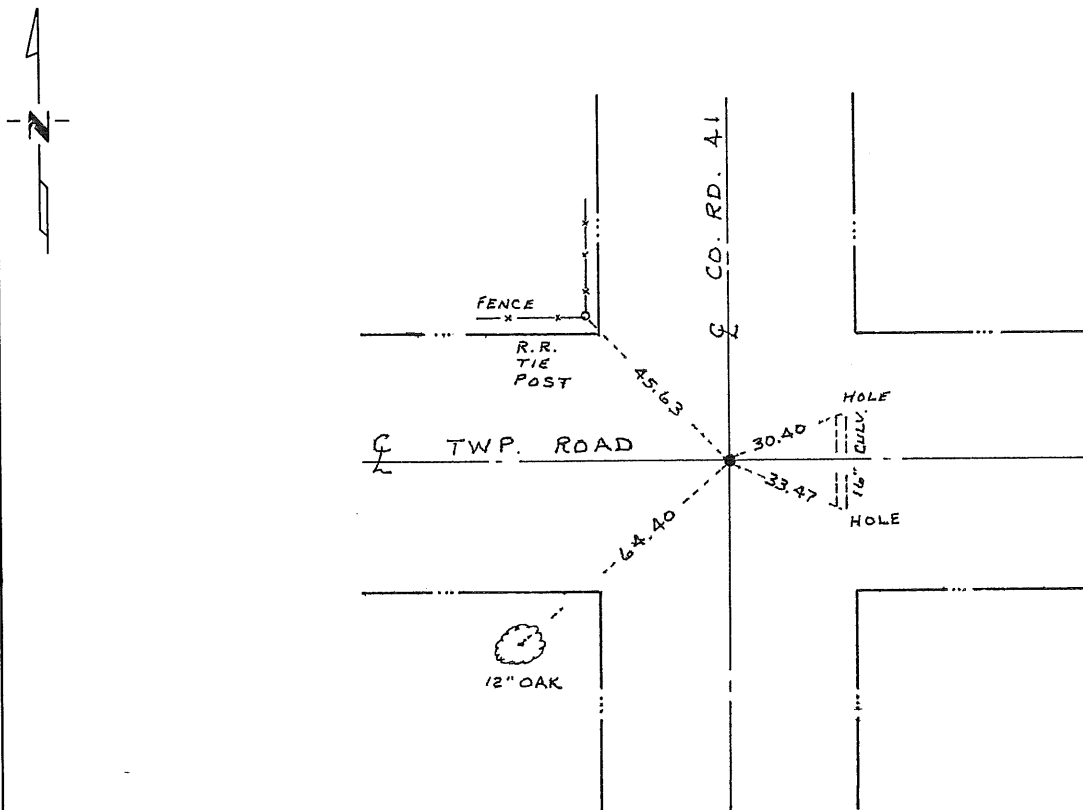
Northeast _____ Corner of Section 26, Township 38, Range 30, 4th P.M.

STATE OF MINNESOTA, County of Benton

At the corner location shown on the sketch:

- On 4/29/83 found a 1 inch solid iron pin over a wood stake
DATE
in center line of roads north, south, east and west
 left monument as found, lowered monument, removed monument (explain)
- On 4/29/83 placed a Benton County cast iron monument
DATE

SKETCH OF REFERENCE TIES



Statement of evidence relative to this corner location is on back of page.

I hereby certify that this document and the data contained herein was prepared by me or under my direct supervision

David S. Ryan 7/14/83
SIGNATURE DATE

Registration No. 12236

- Land Surveyor, Professional Engineer
- County Surveyor, County Engineer

OFFICE OF THE REGISTER OF DEEDS
County of Benton

I hereby certify that this document was filed in the Reg. of Deeds office at 11 A.M. on the 25 day of July A.D., 1983
Co. Recorder
Register of Deeds F. A. Johnson

By _____, Deputy
DOCUMENT NO. 166050