

A 362864

Certified, Filed and or Recorded on
JAN. 06, 2009 AT 02:57PM

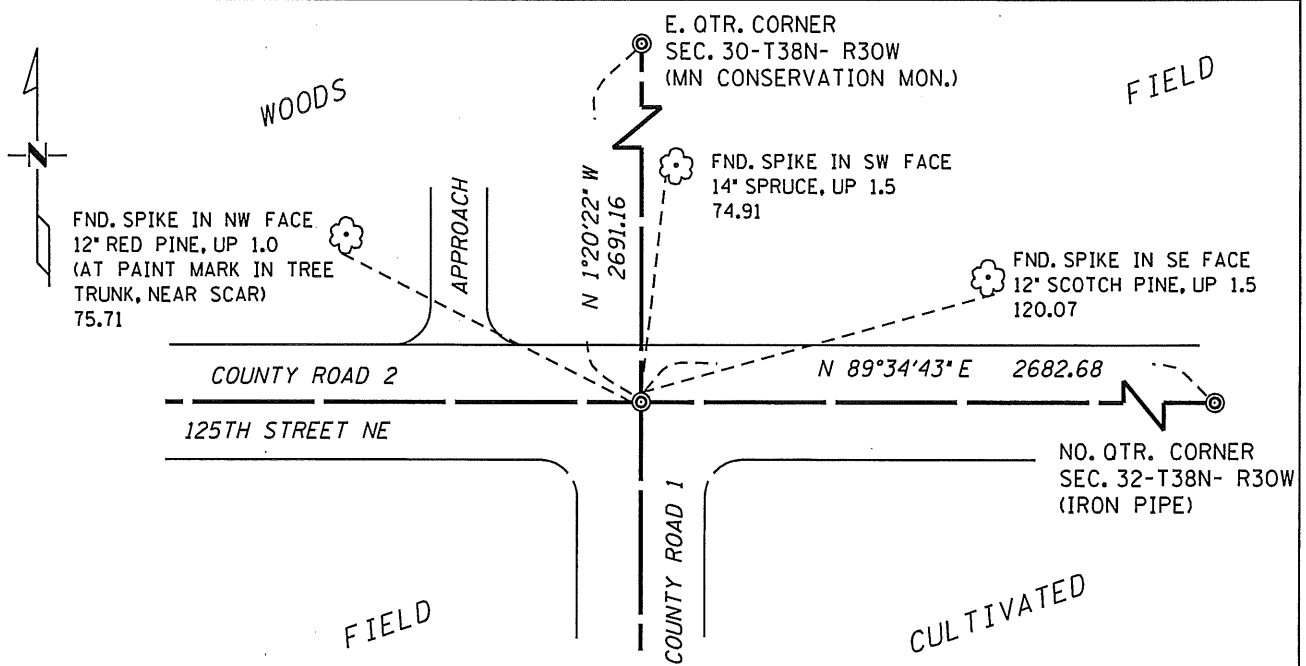
Signed: CK
MARILYN J NOVAK B V I
BENTON COUNTY MINNESOTA
MARILYN J NOVAK
COUNTY RECORDER

CERTIFICATE OF LOCATION OF GOVERNMENT CORNER

Northeast Corner of Section 31, Township 38 N, Range 30 W
4TH Principal Meridian, State of Minnesota, County of Benton

At the corner location shown on the sketch:

- On 8-14-2008 found a 1/2" Iron Pipe
DATE
- left monument as found lowered monument removed monument (explain)
- On _____ placed a _____
DATE



TIES ARE TO HEAD OF SPIKE WITH DISK MARKED "CORNER TIE"

Statement of evidence for this corner location is on back of this page.

I hereby certify that this document was researched and prepared by me or under my direct supervision.

Signature Saul J. Deleo Date 10-3-2008 License No. 40341
 Title: Land Surveyor Professional Engineer County Surveyor County Engineer

Statement of Evidence:

C312

Northeast Corner of Section 31, Township 38 North, Range 30 West, Graham Township, 4th Principal Meridian, Benton County, Minnesota.

- 1852 Original US General Land Office survey set a wood post at this location and bearing trees were recorded.
- | | | |
|-------------|----------|-----------|
| 7" Blk. Oak | S 69 E | 100 links |
| 5" Aspen | S 43 ½ W | 47 links |
- 1921 County Surveyor's Record Book 2, page 218, shows the following reference ties.
- | | | |
|----|----|-------|
| TP | SE | 42.0' |
| TP | SW | 72.8' |
- Engineer's Notebook No. 21 ran road survey east-west and notes town road south. Notebook No. 27 notes iron bolt at the corner.
- 1923 County Engineer's Notebook No. 40 contains a survey for CAR No. 1 running south to north. Notes corner with ties:
- | | | |
|----|----|-------|
| TP | SE | 47.0' |
| TP | SW | 72.8' |
- 1938 County Engineer's Notebook No. 116 contains a survey for SAR No. 1 that notes the following ties to a spike in road intersection:
- | | | | | | |
|----|----|------|----|---|------|
| TP | NE | 43.1 | FP | N | 31.3 |
|----|----|------|----|---|------|
- Undated Engineer's ties call for a bolt at the corner location, 3' below the surface, at the intersection of County Road 2 and County Road 1 with the following reference ties.
- | | | |
|--------------|-----|-------|
| 6" Evergreen | NW | 75.65 |
| 8" Evergreen | NE | 84.70 |
| 6" Evergreen | ENE | 104.5 |
- 1963 The Minnesota Dept. of Natural Resources (fka MN Conservation Dept.) performed surveys in Sections 29 and 30 for the Wisneski WMA (File No. G892-X). They note a found iron pipe 5365 feet at the NE of Sec. 32. They also set a conservation dept. monument 2691.15 feet for the E1/4 corner of Sec. 30.
- 2002 Westwood Professional Services, Inc. located monuments along County Road 2, prior to road construction, using GPS. Found a RR Spike in road intersection and dug under the RR Spike and found a 1/2" iron pipe, which fit one evergreen tie to the NW. No evidence was found of other previous ties. Filed Certificate of Location (Doc. No. 293718).

Continued.....

County Coordinates Obtained by GPS
NAD 83 (1996 Adjustment)
N-169690.867
E-484337.397

2008 Sam DeLeo, LS 40341, found an iron pipe at the centerline of CR 2 (E-W) and CR 1 to the south. Distances were measured to the NE of Sec. 32 (5365.37), and to the E1/4 of Sec. 30 (2691.16). Westwood's 2002 ties and coordinate values were verified. The measured distance of 2691.16 feet to the EQ of Sec. 30 (Cons. Mon.) and of 5387.04 to the NE of Sec. 32 (iron pipe) do compare well with the 1963 distances. Westwood's 2002 coordinate values and reference ties were verified.

MARILYN J. NOVAK
COUNTY RECORDER
BY CK DEPUTY

OFFICE OF
BENTON COUNTY RECORDER
BENTON COUNTY, MN
CERTIFIED TO BE FILED
AND/OR RECORDED ON

293718

2002 DEC 31 P 3:55

CERTIFICATE OF LOCATION OF GOVERNMENT CORNER

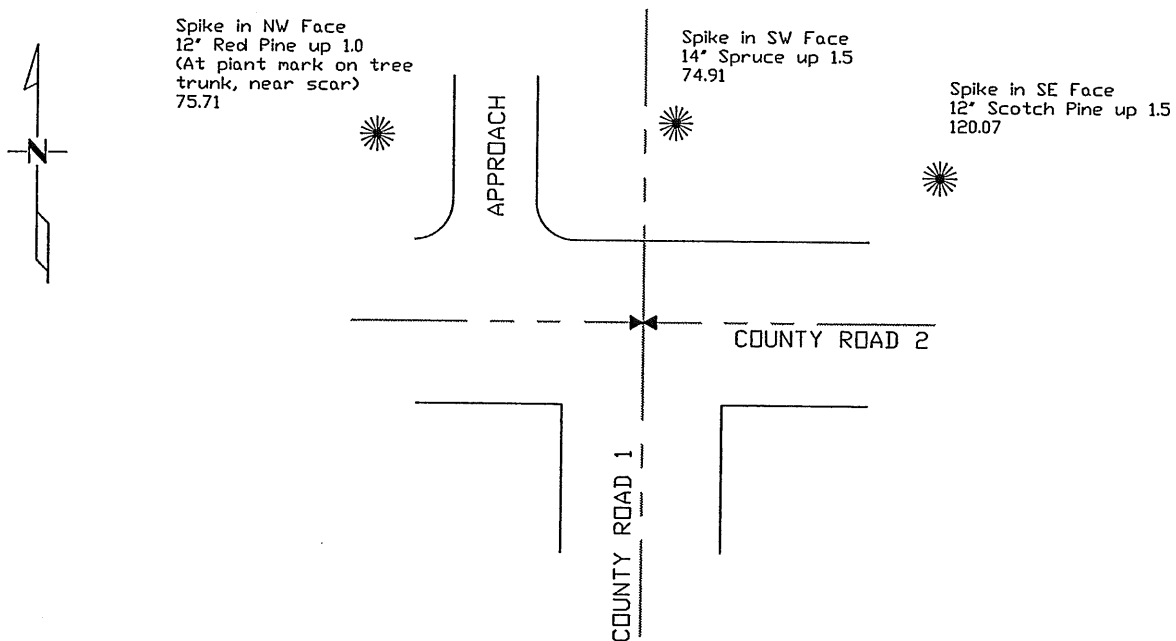
Northeast Corner of Section 31, Township 38, Range 30
4TH Principal Meridian, State of Minnesota, County of BENTON

At the corner location shown on the sketch:

On 4/22/2002 found a RR spike over a 1/2" iron pipe
DATE

left monument as found lowered monument removed monument (explain)

On _____ placed a _____
DATE



New ties are to the head of a nail with a disk marked "Corner Tie".

Statement of evidence for this corner location is on back of this page.

I hereby certify that this document was researched and prepared by me or under my direct supervision and that I am a licensed Land Surveyor under the laws of the State of Minnesota.

Signature [Signature] Date 11/27/02 License No. 12684

Title: Land Surveyor Professional Engineer County Surveyor County Engineer

Statement of Evidence:

C312

The Northeast Corner of Section 31, Township 38 North, Range 30 West, Graham Township, 4th Principal Meridian, Benton County, Minnesota.

In 1852, Edwin James Jr. set a wood post at this location and bearing trees were recorded.

7" Blk. Oak	S 69 E	100 links
5" Aspen	S 43 1/2 W	47 links

The County Surveyors records in Book 2, page 218 show the following reference ties.

TP	SE	42.0'
TP	SW	72.8'

Undated engineers ties call for a bolt at the corner location, 3' below the surface, at the intersection of County Road 2 and County Road 1 with the following reference ties.

6" Evergreen	NW	75.65
8" Evergreen	NE	84.70
6" Evergreen	ENE	104.5

In April 2002 Westwood Professional Services, Inc. located monuments along County Road 2, prior to road construction, using GPS. On April 19, 2002 Westwood Professional Services, Inc. found a RR Spike. On April 22, 2002 dug under the RR Spike and found a 1/2" iron pipe, which fit one evergreen tie to the NW. No evidence of other previous ties were found.

On November 12, 2002 Westwood Professional Services, Inc. found the iron pipe at the corner location and established reference ties.

County Coordinates Obtained by GPS
NAD 83 (1996 Adjustment)
N-169690.898
E-484339.502