

A 364272

Certified, Filed and or Recorded on
Mar. 11, 2009 AT 10:16AM

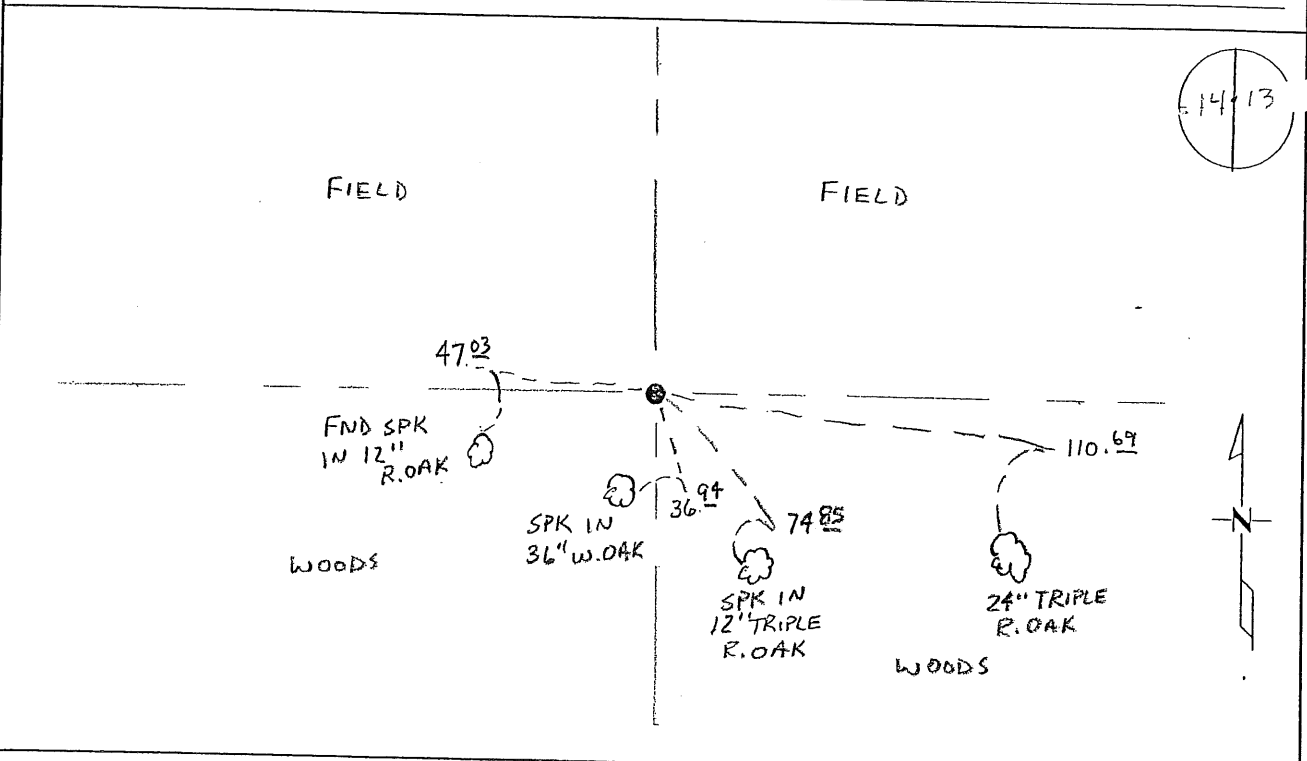
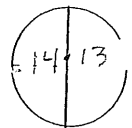
Signed: Ju
MARILYN J NOVAK G V I
BENTON COUNTY MINNESOTA
MARILYN J NOVAK
COUNTY RECORDER

CERTIFICATE OF LOCATION OF GOVERNMENT CORNER

EAST QUARTER Corner of Section 14, Township 37, Range 31
4TH Principal Meridian, State of Minnesota, County of Benton

At the corner location shown on the sketch:

- On 12-8-08 found a CAST IRON MONUMENT
- left monument as found lowered monument removed monument (explain)
- On _____ placed an _____



Statement of evidence for this corner location is on back of this page.

I hereby certify that this document was researched and prepared by me or under my direct supervision and that I am a licensed Land Surveyor under the laws of the State of Minnesota.

Signature Ch. Hoyer
Deputy County Surveyor
License No. 43932

Date: 3/6/09

Benton County Surveyor's Office
 Chris Hoglund, Deputy County Surveyor
 Minnesota License No. 43932

Statement of Evidence:

F143

East Quarter Corner of Section 14, Township 37 North, Range 31 West, Watab Township, 4th Principal Meridian, Benton County, Minnesota.

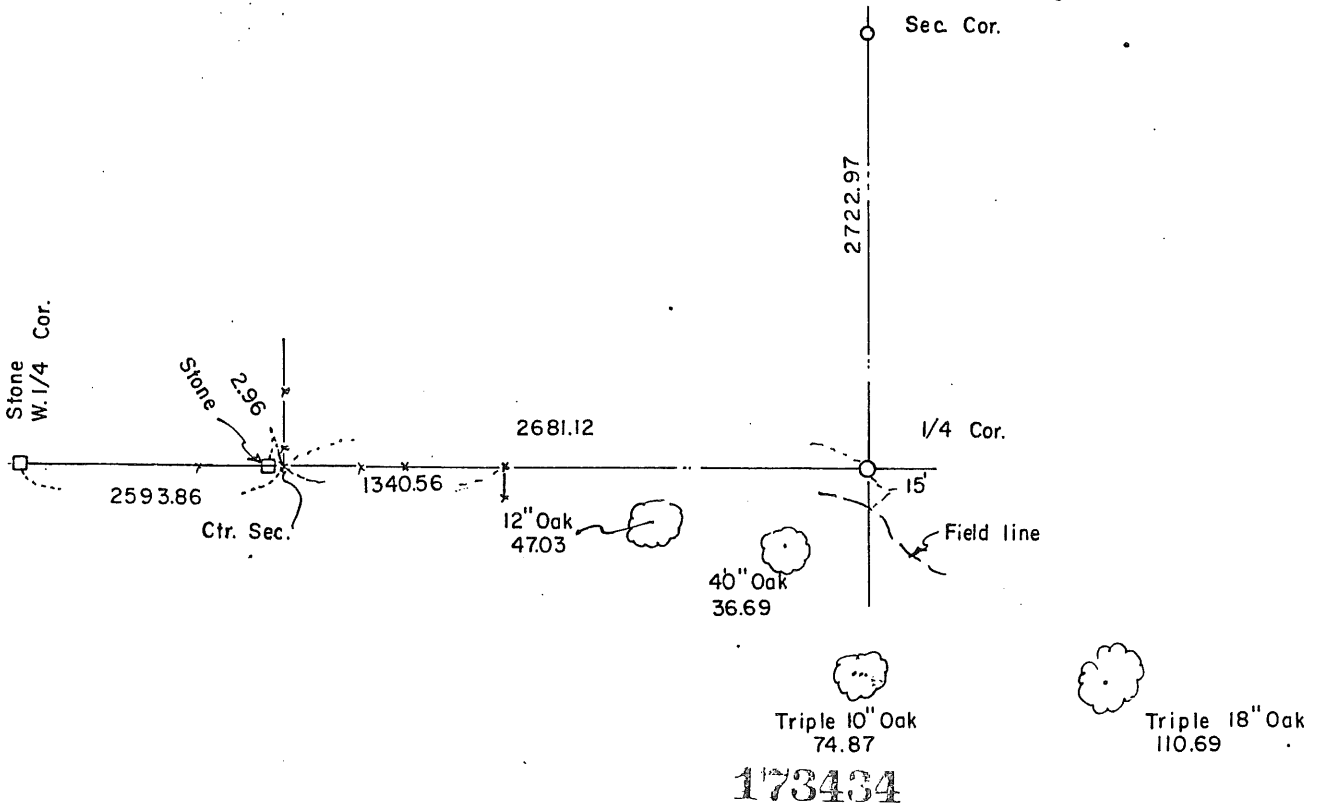
- 1850 Original US General Land office survey set a wood post at this location and bearing trees were recorded.
- | | | |
|-------------|--------|----------|
| 14" Blk Oak | S 22 W | 9 links |
| 8" Blk Oak | S 77 E | 68 links |
- 1985 William Lunser, LS 9394, set a cast iron monument at a corner position on line between stones at the West ¼ corner of Sec. 14 and at the center of Sec. 14, extended east and doubling the distance from the stone at the center and a fence line south at 1340.56 feet east of the center stone. He states position is corroborated by a fence line. He filed a Certificate of Location (#173434). He notes the following distances:
- 5274.98 feet to the West 1/4 Corner of Sec. 14
 - 1340.56 feet to a fence line south
 - 2722.97 feet to the NE Corner of Sec. 14
- 2002 Found no resurvey information on this corner in the Benton County records.
- 2002 Westwood Professional Services, Inc.
 County Coordinates obtained by GPS (CIM)
 NAD 83 (1996 Adjustment)
 N-150787.141
 E-473418.822
- 2004 MN/DOT
 County Coordinates obtained by GPS
 NAD 83 (1996 Adjustment)
 N-150787.233
 E-473418.803
- 2002 Westwood Professional Services, Inc. found a cast iron monument agreeing with 1985 Lunser ties and distances. Position appears to agree with longstanding occupation of field lines and is accepted as marking the obliterated position for this corner. Coordinates obtained by GPS coincide with 2002 position.

CERTIFICATE OF LOCATION OF GOVERNMENT CORNER

I hereby certify that on the 26th day of February, 1985
 I did find the East Quarter corner of Section 14,
Twp. 37, Rg. 31, Benton County, Minnesota, which
 was evidenced by a line extended from stone monument at
West Quarter corner across stone monument at center section,
corroborated by fence lines.

I further certify that in order to perpetuate said corner I did
 at the exact location thereof place a permanent marker consisting
 of cast iron monument and that
 I did establish witness or reference monuments as shown below:

*SE NE
 NE SE
 NW
 NW SW
 13-
 3791*



173434

I hereby certify that the above is true and correct and that I am a registered Land Surveyor under the laws of the State of Minnesota.

William J. Linn
 Minn. Registration No. 9394

Office of the County Recorder,
Benton County, Minn.

I hereby certify that the within instrument was filed for record in this office on the 16th day of May, 1985 at 3:00 PM
Alice C. Engelmeyer
 County Recorder

By _____ Deputy.