

Certified, Filed and or Recorded on
Nov. 05, 2008 AT 08:22AM

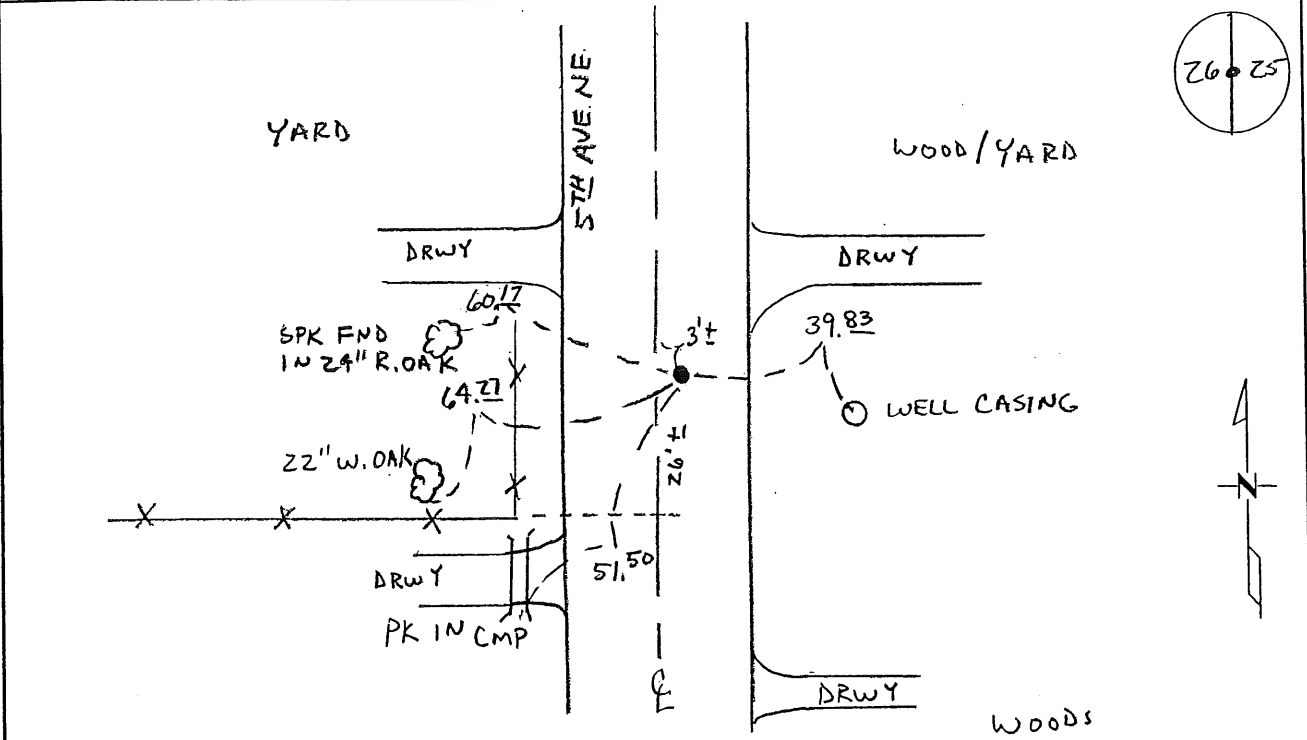
Signed: [Signature]
MARILYN J NOVAK G V I
BENTON COUNTY MINNESOTA
MARILYN J NOVAK
COUNTY RECORDER

CERTIFICATE OF LOCATION OF GOVERNMENT CORNER

EAST QUARTER Corner of Section 26, Township 37, Range 31
4TH Principal Meridian, State of Minnesota, County of Benton

At the corner location shown on the sketch:

- On 10-09-08 found a CAST IRON MONUMENT
- left monument as found lowered monument removed monument (explain)
- On _____ placed an _____



Statement of evidence for this corner location is on back of this page.

I hereby certify that this document was researched and prepared by me or under my direct supervision and that I am a licensed Land Surveyor under the laws of the State of Minnesota.

Signature [Signature]
Deputy County Surveyor
License No. 43932

Date: 11/3/08
PAGE 1 OF 2

Statement of Evidence:

F263

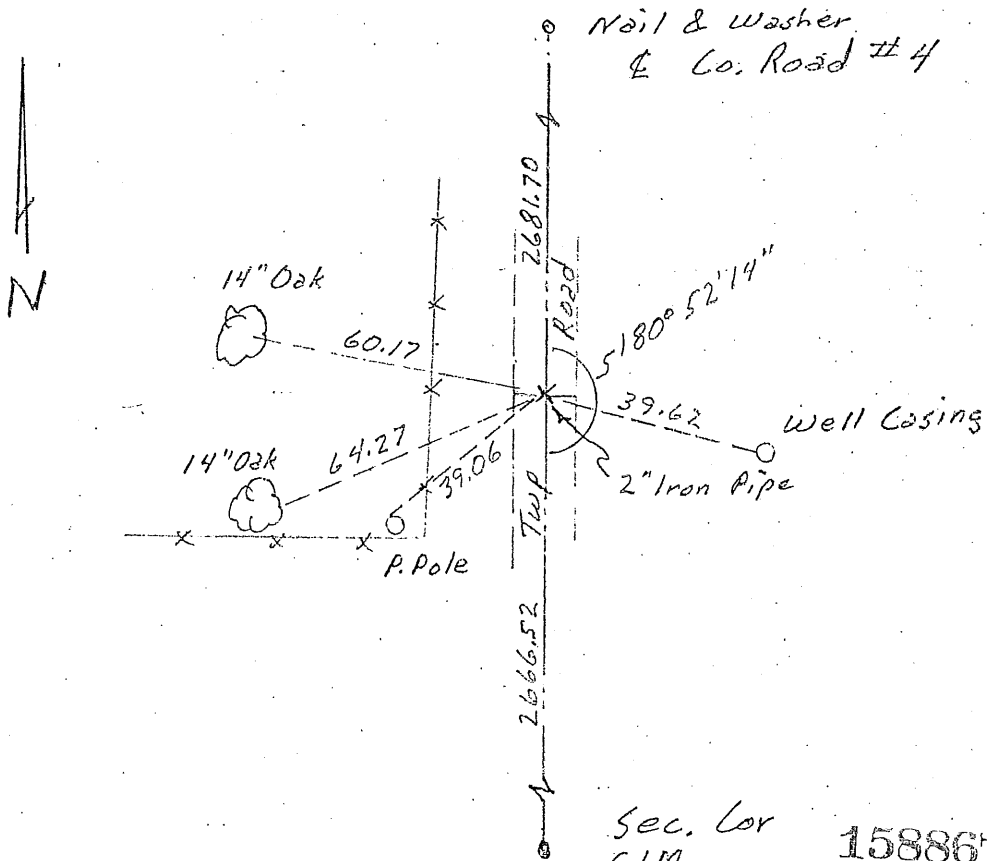
East Quarter Corner of Section 26, Township 37 North, Range 31 West, Watab Township, 4th Principal Meridian, Benton County, Minnesota.

- 1850 Original US General Land Office survey set a wood post at this location and bearing trees were recorded.
- | | | |
|-------------|--------|-----------|
| 20" Bur Oak | N 76 W | 148 links |
| 8" Bur Oak | S 82 E | 109 links |
- 1969 County ties to a 2" pipe, 2 feet east of the centerline of a gravel road:
- | | | |
|---------------------------------|----|-------|
| 12" R. Oak stump | NW | 42.33 |
| S. End 12" Conc. Culvert | SW | 47.20 |
| W. Face 14" Triple R. Oak stump | W | 41.20 |
- 1981 William Lunser, LS 9394, found a 2" iron pipe and filed a Certificate of Location (#158867). He notes the following distances: A distance of 2681.70 feet to the NE Corner of Section 26 and a distance of 2666.52 feet to the SE Corner of Section 26.
- 2001 Westwood Professional Services, Inc. found a cast iron monument on the centerline of 5th Avenue NE (running north and south). No record of who set the CIM. Need to check against Lunser's ties.
- 2003 Surveying & Engineering Professionals found a CIM. They measured 2681.67 feet to the NE corner and 2666.60 feet to the SE corner of Section 26. CIM fits Lunser's position.
- 2008 Westwood Professional Services, Inc. found a CIM at the corner location. CIM fits three of 1981 Lunser ties and distances given to the NE and SE corners of Section 26. CIM is accepted as marking the obliterated position for this corner. County Coordinates obtained by GPS to CIM.
- NAD 83 (1996 Adjustment)
N-140122.921
E-473322.284

CERTIFICATE OF LOCATION OF GOVERNMENT CORNER

I hereby certify that on the 17th day of March, 1981
I did find _____ the East Quarter corner of Section 26,
Twp. 37, Rg. 31, BENTON County, Minnesota, which
was evidenced by a 2 inch iron pipe

I further certify that in order to perpetuate said corner I did
at the exact location thereof place a permanent marker consisting
of left as found and that
I did establish witness or reference monuments as shown below:



Sec. Cor
C.I.M. 158867

I hereby certify that the above is true and correct and that I am a registered Land Surveyor under the laws of the State of Minnesota.

William P. L...

Minn. Registration No. 9394

Office of the County Recorder,
Benton County, Minn.

I hereby certify that the within instrument was filed for record in this office on the 7th day of April, 1981. 3 P.M.

F.A. Johnson
County Recorder

By _____ Deputy.