

Certified, Filed and or Recorded on
Nov. 05, 2008 AT 08:23AM

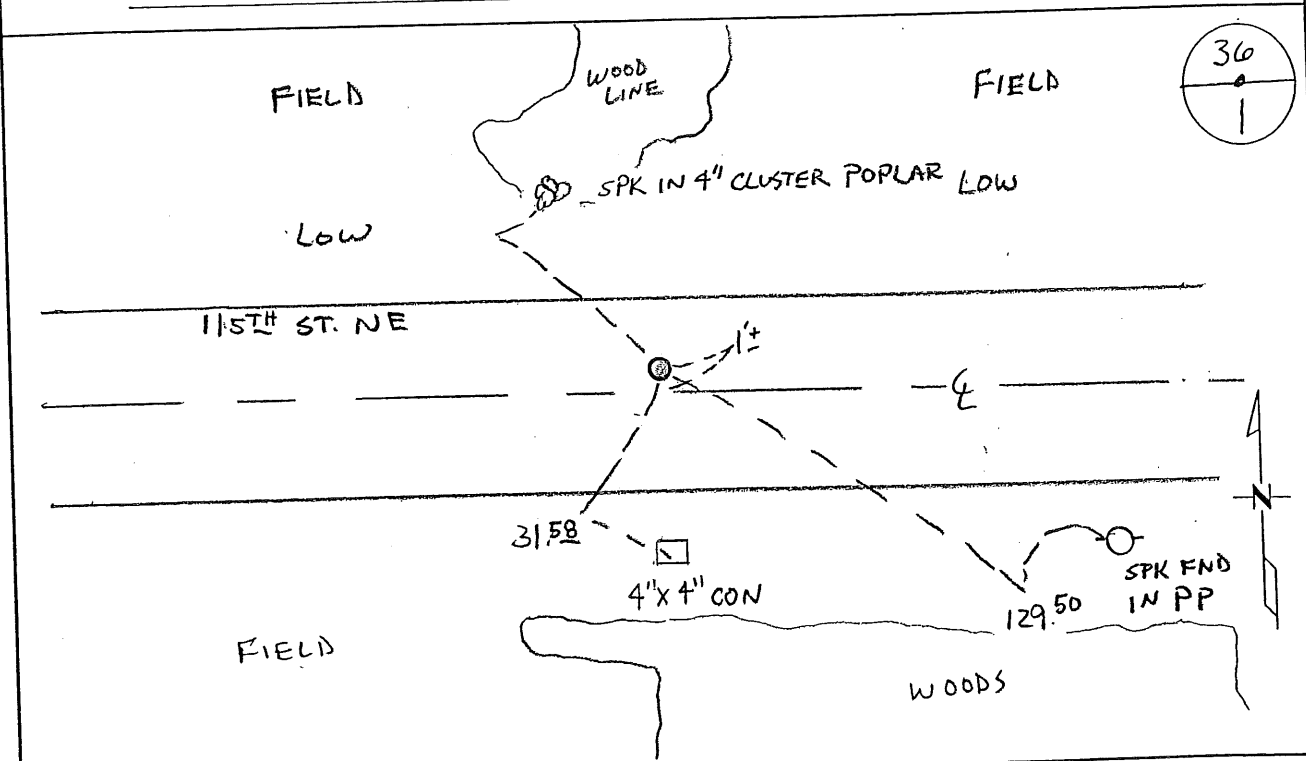
Signed: [Signature]
MARILYN J NOVAK G V I
BENTON COUNTY MINNESOTA
MARILYN J NOVAK
COUNTY RECORDER

CERTIFICATE OF LOCATION OF GOVERNMENT CORNER

NORTH QUARTER Corner of Section 1, Township 37, Range 31
4TH Principal Meridian, State of Minnesota, County of Benton

At the corner location shown on the sketch:

- On _____ found a _____
- left monument as found lowered monument removed monument (explain)
- On 10-16-08 placed on 1/2" IRON PIPE # 43932



Statement of evidence for this corner location is on back of this page.

I hereby certify that this document was researched and prepared by me or under my direct supervision and that I am a licensed Land Surveyor under the laws of the State of Minnesota.

Signature [Signature]
Deputy County Surveyor
License No. 43932

Date: 11/3/08

Benton County Surveyor's Office
 Chris Hoglund, Deputy County Surveyor
 Minnesota License No. 43932

Statement of Evidence:**F011**

North Quarter Corner of Section 1, Township 37 North, Range 31 West, Watab Township, 4th Principal Meridian, Benton County, Minnesota.

- 1849 Original US General Land Office survey established the corner and set a wood post and bearing trees recorded:
- | | | |
|-------------|------------|-----------|
| 16" Bur Oak | N 82 1/2 W | 692 links |
| 4" Bur Oak | S 87 W | 732 links |
- A line tree is noted as a 6" Bur Oak, East 19.05 chains.
- 1923 County Surveyor's Record Book 1, page 315 show a survey by Samuel S. Chute which notes a post at the corner and concrete fence posts as ties 33 feet north and south. It appears he set the corner lost as his notes show a distance of 5464.00 feet between section corners with 2732.00 feet to the NW corner of Sec. 1 (Iron Mt) and a distance of 2732.00 feet to the NE corner Sec. 1 (Post).
- 1978 On March 6, 1978 Ronald Engelmeyer, LS 13334, set a 1/2" iron pipe at the centerline of a road east/west and on an occupation line north/south. He filed a Certificate of Location (#151564) and notes a distance of 2729.58 feet to the NE Cor of Sec. 2.
- 2002 Westwood Professional Services, Inc. searched corner area at the centerline of a road east/west and a tree line north/south. The iron set by Engelmeyer has been destroyed, but ties remain. The corner needs to be reset. We measure 5461.35 feet between section corners. It appears the lost position would fit the ties.
 County Coordinates computed to lost position:
 NAD 83 (1996 Adjustment)
 N- 164357.878
 E- 476209.396
- 2005 Daniel Kron, LS 42621, confirmed 2002 information and that the lost position would fit the ties.
- 2008 Westwood Professional Services, Inc. searched corner area at the centerline of a road east/west, a tree line north/south and at lost location. Nothing was found. A 1/2" iron pipe capped 43932 was set at the lost position. Measured 2730.67 feet to the NE and NW corners of Section 1 and ties compare well to 1978 Engelmeyer certificate.
 County Coordinates obtained by GPS:
 NAD 83 (1996 Adjustment)
 N- 164357.878
 E- 476209.396

CERTIFICATE OF LOCATION OF GOVERNMENT CORNER

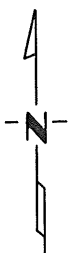
North Quarter _____ Corner of Section 1, Township 37, Range 31, 4 P.M.

STATE OF MINNESOTA, County of Benton

At the corner location shown on the sketch:

- On 3-6-78 found a I did restore by C-L Road East-West & Occupation lines ^{DATE} North-South & placed a marker consisting of 1/2" iron pipe
 - left monument as found, lowered monument, removed monument (explain)
- On _____ placed a _____
DATE

SKETCH OF REFERENCE TIES



Refer to next page

Statement of evidence relative to this corner location is on back of page.

I hereby certify that this document and the data contained herein was prepared by me or under my direct supervision.

Ronald Engelmeyer _____
SIGNATURE DATE

Registration No. 13334
 Land Surveyor, Professional Engineer
 County Surveyor, County Engineer

County Recorder

OFFICE OF THE REGISTER OF DEEDS-
 County of Benton

I hereby certify that this document was filed in the Reg. of Deeds office at 9 A.M. on the 21 day of February A.D., 19 79

Register of Deeds F. A. Johnson

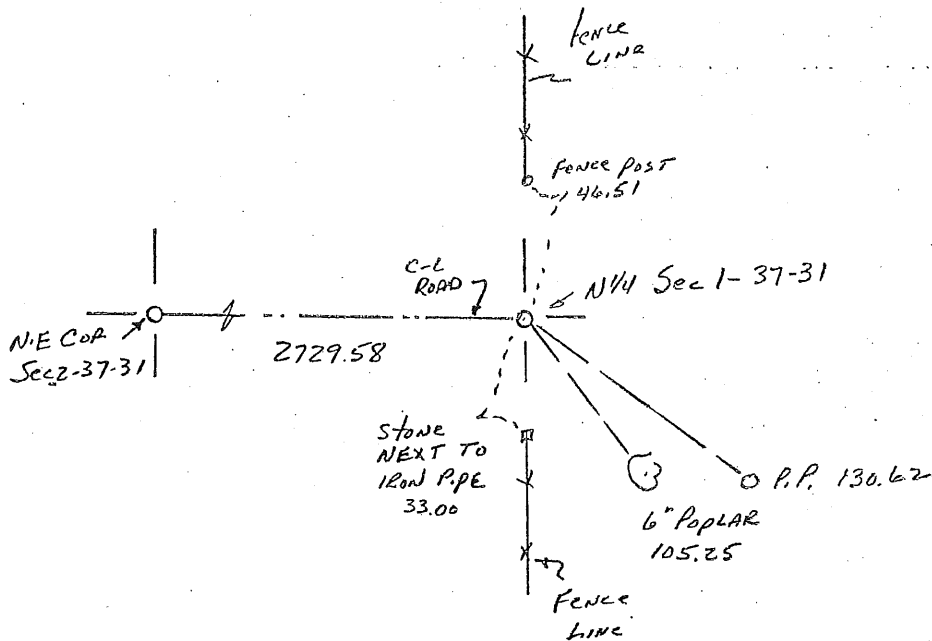
By _____, Deputy

DOCUMENT NO. 151564

CERTIFICATE OF LOCATION OF GOVERNMENT CORNER

I hereby certify that on the 6th day of MARCH, 1978
 I did restore the NORTH QUARTER corner of Section 1,
 Twp. 37, Rg. 31, BENTON County, Minnesota, which
 was evidenced by C-L ROAD EAST-WEST & OCCUPATION LINES TO
NORTH-SOUTH.

I further certify that in order to perpetuate said corner I did
 at the exact location thereof place a permanent marker consisting
 of 1/2" IRON PIPE and that
 I did establish witness or reference monuments as shown below:



I hereby certify that the above is true and correct and that I am a registered Land Surveyor under the laws of the State of Minnesota.

[Signature]
 Minn. Registration No. 13334

151564

County Recorder
 Office of the ~~Register~~ of Deeds,
Benton County, Minn.

I hereby certify that the within instrument was filed for record in this office on the 21 day of February, 1979, 9 a.m.

F.A. Johnson
 Register of Deeds County Recorder
 By _____ Deputy.