

Certified, Filed and or Recorded on
Mar. 11, 2009 AT 10:20AM

Signed: [Signature]
MARILYN J NOVAK G V I
BENTON COUNTY MINNESOTA
MARILYN J NOVAK
COUNTY RECORDER

CERTIFICATE OF LOCATION OF GOVERNMENT CORNER

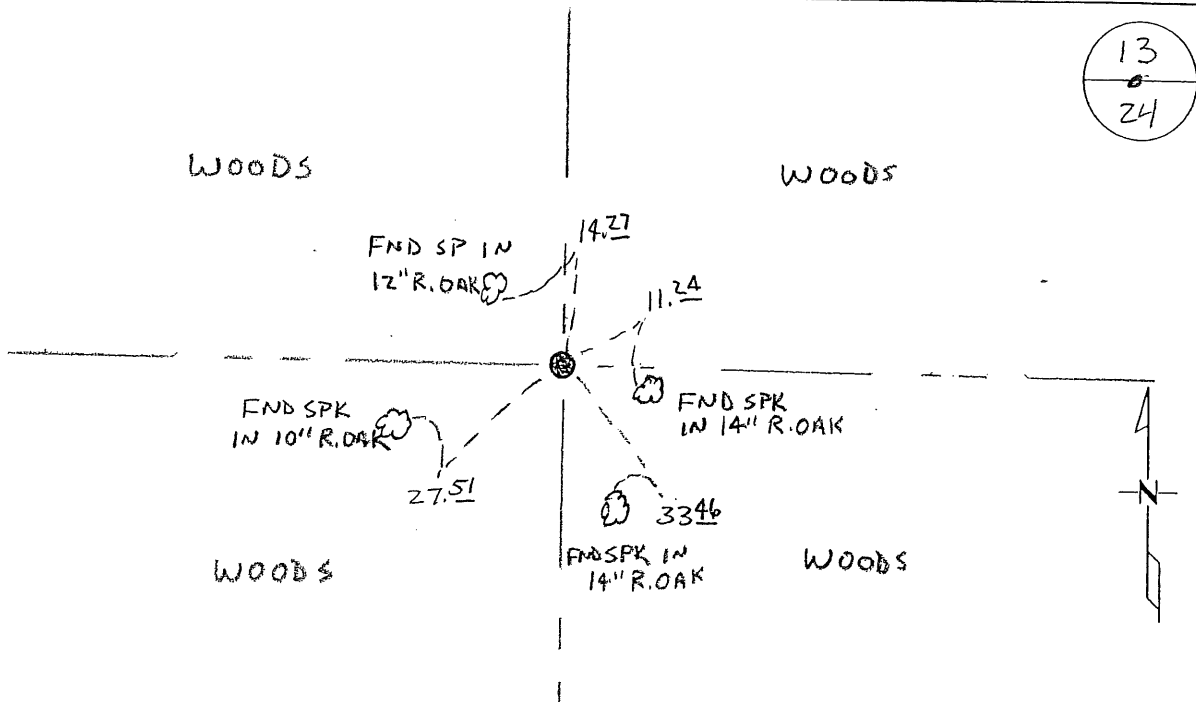
NORTH QUARTER Corner of Section 24, Township 37, Range 31
4TH Principal Meridian, State of Minnesota, County of Benton

At the corner location shown on the sketch:

On 12-8-08 found a CAST IRON MONUMENT

left monument as found lowered monument removed monument (explain)

On _____ placed an _____



Statement of evidence for this corner location is on back of this page.

I hereby certify that this document was researched and prepared by me or under my direct supervision and that I am a licensed Land Surveyor under the laws of the State of Minnesota.

Signature [Signature]
Deputy County Surveyor
License No. 43932

Date: 3/6/09

Statement of Evidence:

F241

North Quarter Corner of Section 24, Township 37 North, Range 31 West, Watab Township, 4th Principal Meridian, Benton County, Minnesota.

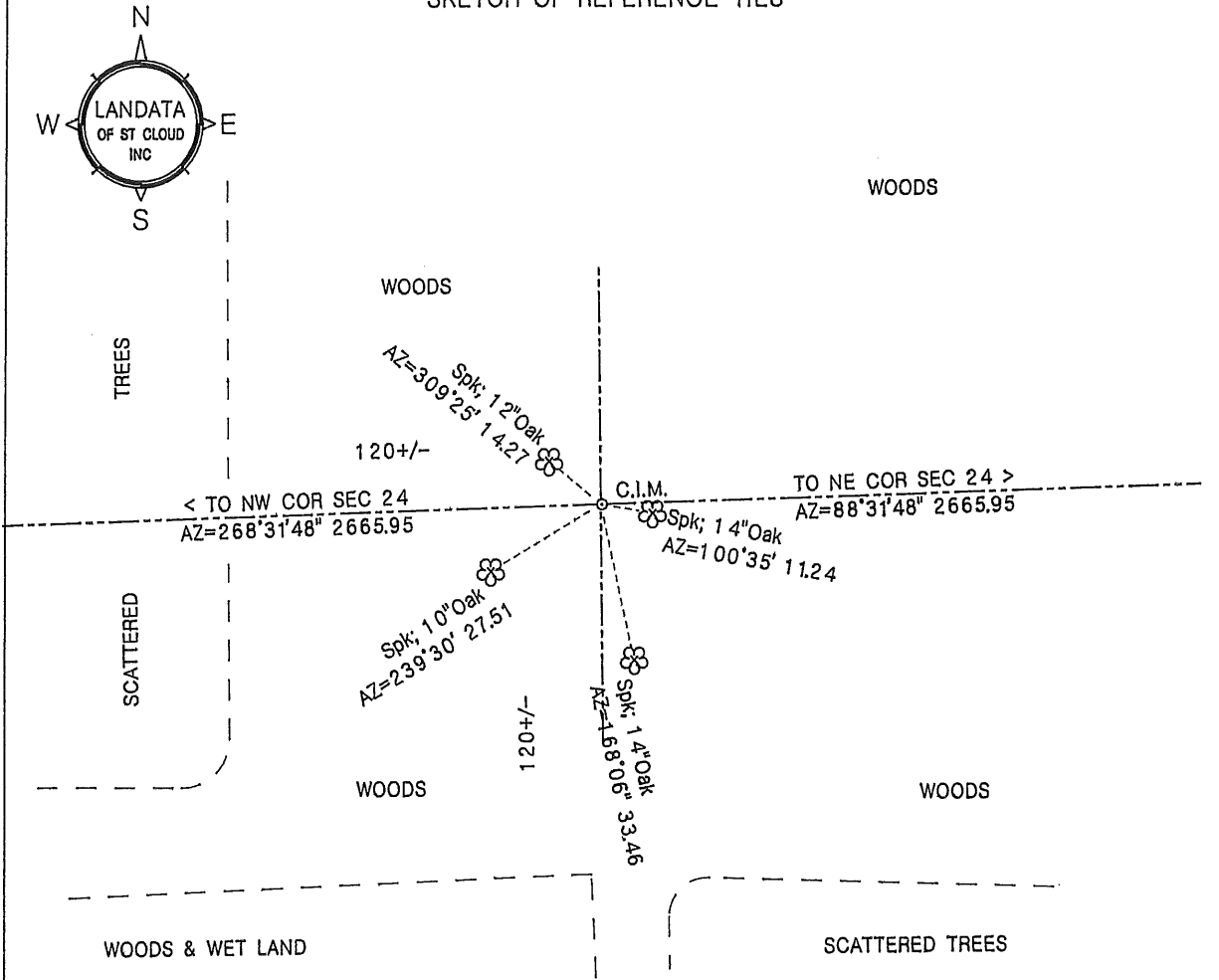
- 1850 Original US General Land Office survey set a wood post at this location and bearing trees were recorded.
- | | | |
|-------------|------------|-----------|
| 4" Blk Oak | S 6 3/4 W | 104 links |
| 10" Blk Oak | N 40 1/2 W | 272 links |
- 1995 William Lunser, LS 9394, set a cast iron monument at the lost position that checked with corners to the east and west for proportionate distances. He filed a Certificate of Location (#234194).
- 2002 No resurvey information has been found on this corner in the Benton County records.
- 2008 Westwood Professional Services, Inc. found a cast iron monument fitting all of Lunser's 1995 ties. Measured 2665.97 feet to the NW corner and 2665.61 feet to the NE corner of Section 24. CIM is accepted as marking the obliterated position for this corner.
County Coordinates obtained by GPS and conventional survey methods
NAD 83 (1996 Adjustment)
N-148166.508
E-476062.682

CERTIFICATE OF LOCATION OF GOVERNMENT CORNER

NORTH QUARTER corner of Section 24, Township 37, Range 31, 4th P.M.
Benton County, Minnesota.

On May 26, 1995, A cast iron monument (C.I.M.) was placed at this location.

SKETCH OF REFERENCE TIES



Statement of evidence relative to this corner location on back of page

I hereby certify that this document and the data contained herein was prepared by me or under my direct supervision.

William F. Lunser 3/13/96
 William F. Lunser, L.S. Date
 Mn Reg No 9394

OFFICE OF THE COUNTY RECORDER
 Benton County, Minnesota
 I hereby certify that this document was filed in this office at ___:___ M. on the ___ day of _____, 19___.

County Recorder _____

By _____, Deputy

DOCUMENT NO. _____

STATEMENT OF EVIDENCE:

No records were found to identify this corner after its original placement by the U.S. Government Survey.

A close inspection of the area revealed no evidence of monument or accessories thereto.

I therefor consider this corner Lost and fixed its position by measurements to nearest established corners east and west, proportioned to respective distances of the original survey.




William F. Lunser, L.S.

2 3 4 1 9 4

BENTON COUNTY RECORDER
BENTON COUNTY, MN
CERTIFIED TO BE FILED
AND/OR RECORDED ON

APR 10 2 37 PM '96

ALICE O. ENGELMEYER
COUNTY RECORDER

BY  DEPUTY XM