

MARILYN J. NOVAK
COUNTY RECORDER

BY *cl* DEPUTY

OFFICE OF
BENTON COUNTY RECORDER
BENTON COUNTY, MN
CERTIFIED TO BE FILED
AND/OR RECORDED ON

293717

2002 DEC 31 P 3:55

CERTIFICATE OF LOCATION OF GOVERNMENT CORNER

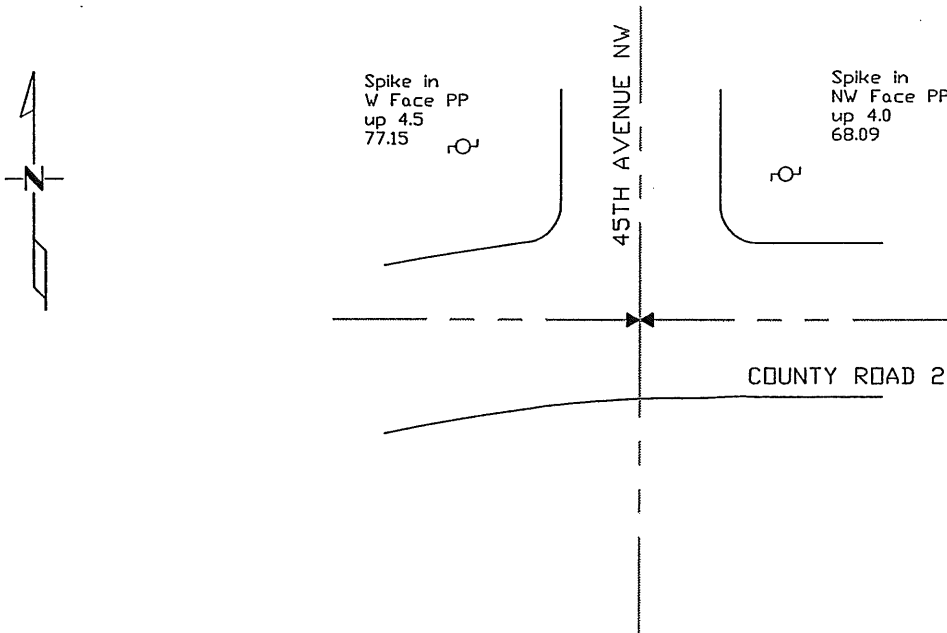
Northeast _____ Corner of Section 36 , Township 38 , Range 32
4TH Principal Meridian, State of Minnesota, County of BENTON

At the corner location shown on the sketch:

On April 2002 found a Cast Iron Monument
DATE

left monument as found lowered monument removed monument (explain)

On 11/15/2002 placed a PK at the location of the cast iron monument
DATE



New tree and power pole ties are to the head of a nail with a brass disk marked "Corner Tie".

Statement of evidence for this corner location is on back of this page.

I hereby certify that this document was researched and prepared by me or under my direct supervision and that I am a licensed Land Surveyor under the laws of the State of Minnesota.

Signature *Christy A. Steen* Date 11/27/02 License No. 12684

Title: Land Surveyor Professional Engineer County Surveyor County Engineer

Statement of Evidence:

E362

The Northeast Corner of Section 36, Township 38 North, Range 32 West, West Langola Township, 4th Principal Meridian, Benton County, Minnesota.

In 1849, Theodore Conkey set a wood post at this location and bearing trees were recorded.

10" Bur Oak	N 43 W	538 links
8" Bur Oak	S 85 1/2 W	493 links

On September 26, 1986 Paul Wellen set a cast iron monument at the corner location. A Certificate of Location (#182953) was filed.

In April 2002 Westwood Professional Services, Inc. located monuments along County Road 2, prior to road construction, using GPS. We found a cast iron monument that fit with Wellen's Certificate of Location.

On November 15, 2002 Westwood Professional Services, Inc. set a PK at the location of the cast iron monument using GPS after road construction.

County Coordinates Obtained by GPS
NAD 83 (1996 Adjustment)
N-169360.755
E-446841.458

CERTIFICATE OF LOCATION OF GOVERNMENT CORNER

Northeast Corner of Section 36, Township 38, Range 32, 4th P.M.

STATE OF MINNESOTA, County of Benton

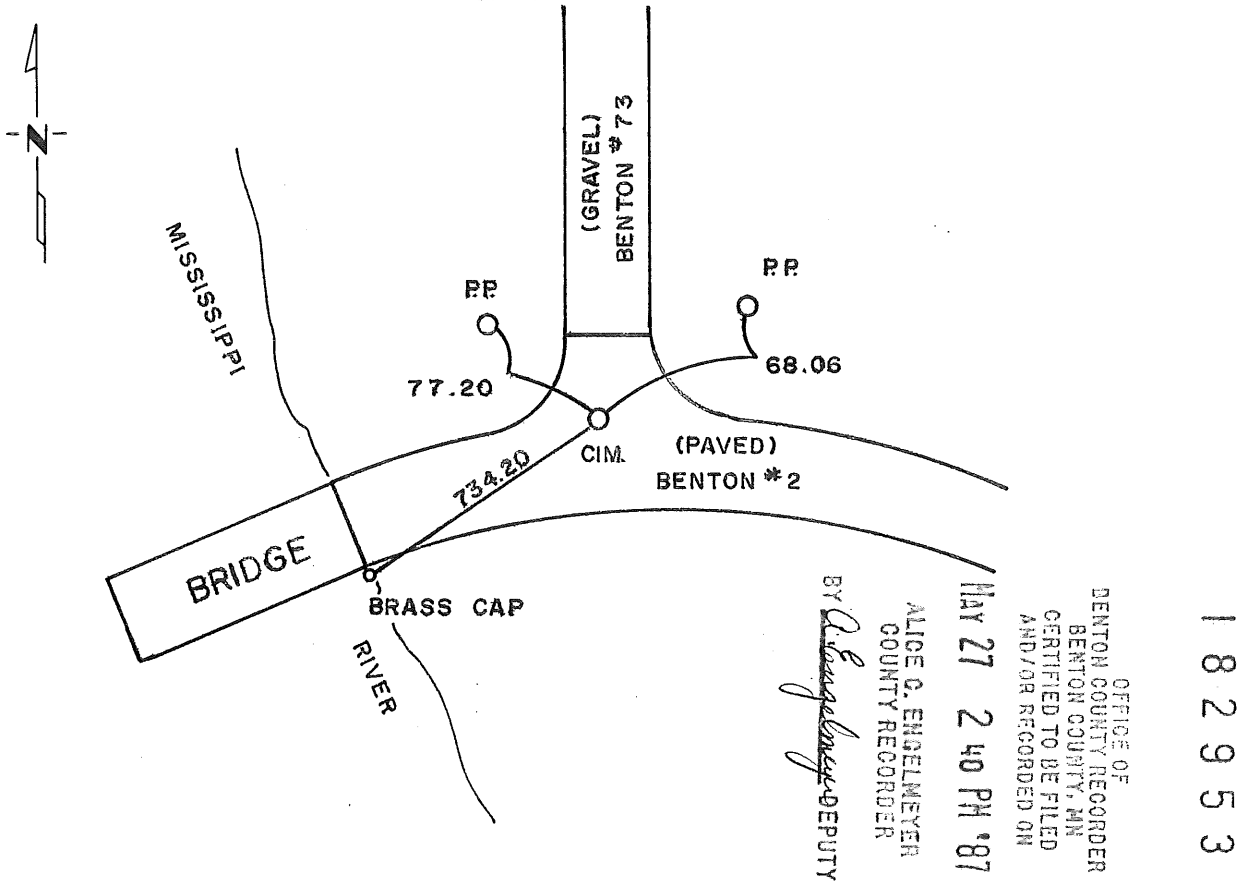
At the corner location shown on the sketch:

On _____ found a _____
DATE

left monument as found, lowered monument, removed monument (explain)

On 9-26-86 placed a Cast Iron Monument
DATE

SKETCH OF REFERENCE TIES



Statement of evidence relative to this corner location is on back of page.

I hereby certify that this document and the data contained herein was prepared by me or under my direct supervision.

Paul J. Miller - 5/5/87
SIGNATURE DATE

Registration No. 10461

Land Surveyor, Professional Engineer

County Surveyor, County Engineer

OFFICE OF THE COUNTY RECORDER

County of _____

I hereby certify that this document was filed in the Co. Recorders office at _____ .M. on the _____ day of _____ A.D., 19 _____

County Recorder _____

By _____, Deputy

DOCUMENT NO. _____