

Certified, Filed and or Recorded on
Oct. 31, 2008 AT 08:30AM

Signed: [Signature]
MARILYN J NOVAK G V
BENTON COUNTY MINNESOTA
MARILYN J NOVAK
COUNTY RECORDER

CERTIFICATE OF LOCATION OF GOVERNMENT CORNER

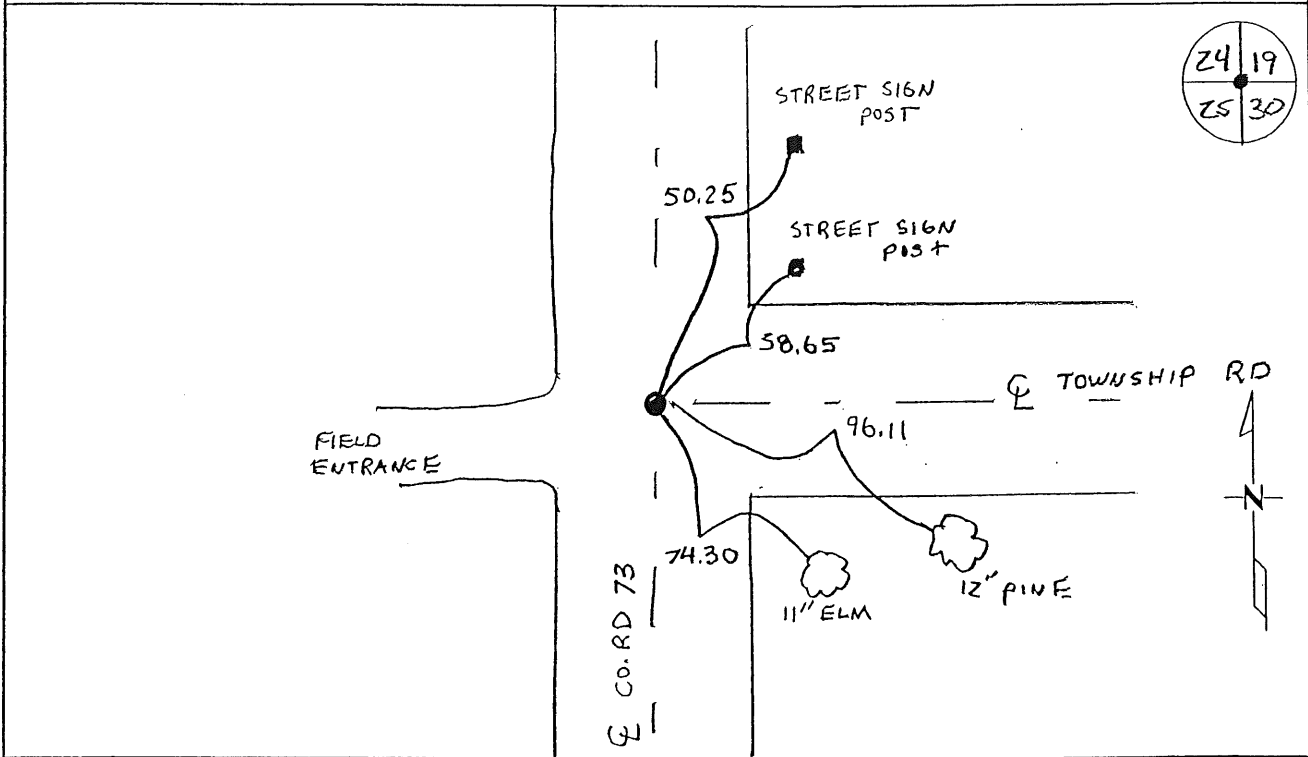
NORTHEAST Corner of Section 25, Township 38, Range 32
4TH Principal Meridian, State of Minnesota, County of Benton

At the corner location shown on the sketch:

On 08-24-08 found a 1/2" I.P. AT €€

left monument as found lowered monument removed monument (explain)

On _____ placed an _____



Statement of evidence for this corner location is on back of this page.

I hereby certify that this document was researched and prepared by me or under my direct supervision and that I am a licensed Land Surveyor under the laws of the State of Minnesota.

Signature [Signature]
Deputy County Surveyor
License No. 43932

Date: 10/14/08

Benton County Surveyor's Office
Chris Hogle, Deputy County Surveyor
Minnesota License No. 43932

Statement of Evidence:

E252

Northeast Corner of Section 25, Township 38 North, Range 32 West, West Langola Township, 4th Principal Meridian, Benton County, Minnesota.

- 1849 Original US General Land Office survey set a wood post in a mound with a pit 6 links north for the corner location.
- 1967 Carley Engineering set an iron monument at the corner for a survey done in Section 24.
- 1991 David Regan, LS 12236, set an iron monument on the centerline of a north/south county road and a township road east and according to the Carley survey.
- 2001 Westwood Professional Services, Inc. found a 1/2' open at the intersection of the centerlines of 135th Street NW (running east and west) and County Road 73 (running north and south).
- 2002 Westwood Professional Services, Inc. found 1/2' open.
County Coordinates obtained by GPS (1/2" open)
NAD 83 (1996 Adjustment)
N-174760.973
E-446652.637
- 2004 MN/DOT
County Coordinates obtained by GPS
NAD 83 (1996 Adjustment)
N-174760.961
E-446652.684
- 2008 Westwood Professional Services, Inc. found a 1/2' iron pipe at the intersection of County Road No. 73 and a Township Road to the east. Iron pipe is ~6.4 feet NW of the lost position for this corner but fits longstanding road occupation. The 1/2' iron pipe is accepted as marking the obliterated location for this corner. County Coordinates obtained by GPS coincide with 2004 MN/DOT position.

CERTIFICATE OF LOCATION OF GOVERNMENT CORNER

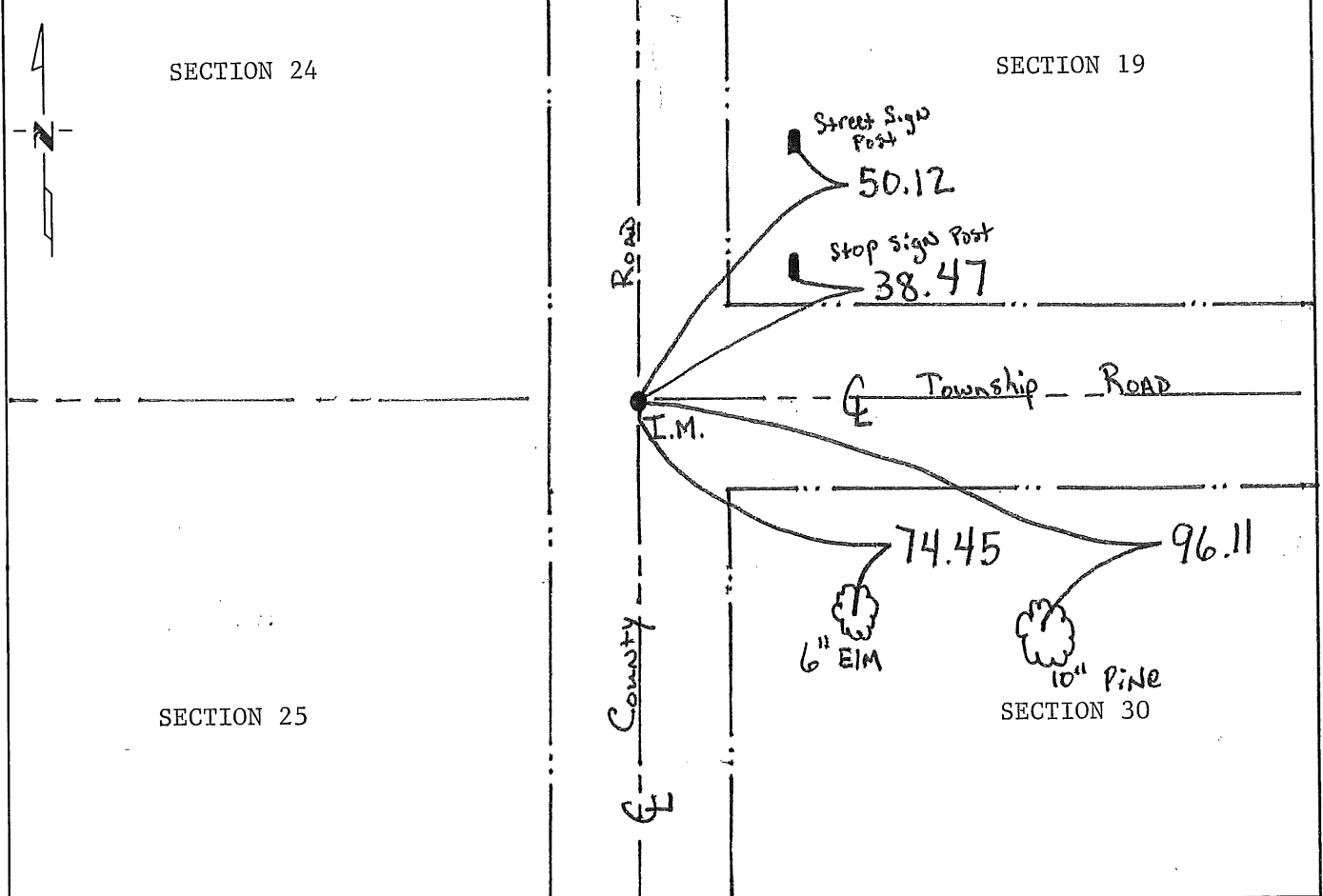
Northeast Corner of Section 25, Township 38, Range 32, 4th P.M.

STATE OF MINNESOTA, County of Benton

At the corner location shown on the sketch:

- On _____ found a _____
DATE
- left monument as found, lowered monument, removed monument (explain)
- On 10-10-91 placed a Iron Monument on center line of County Road North-
DATE South and township road East

SKETCH OF REFERENCE TIES



Statement of evidence relative to this corner location is on back of page.

I hereby certify that this document and the data contained herein was prepared by me or under my direct supervision.

David G. Bryan 5/12/94
SIGNATURE DATE

Registration No. 12236

- Land Surveyor, Professional Engineer
- County Surveyor, County Engineer

OFFICE OF THE REGISTER OF DEEDS

County of _____

I hereby certify that this document was filed in the Reg. of Deeds office at _____ .M. on the _____ day of _____ A.D., 19 _____

Register of Deeds _____

By _____, Deputy

DOCUMENT NO. _____

Statement of Evidence:

The G.L.O. survey was done in 1852 by Edwin James.

The County Surveyors records were searched with no reference to this corner.

In 1/67, Carley Engineering set a iron monument at this corner while doing a survey in section 24.

On 10/91, Regan Land Surveying, Inc. seached ther area and then replaced the iron according to Carley Survey.

223471

OFFICE OF
BENTON COUNTY RECORDER
BENTON COUNTY, MN
CERTIFIED TO BE FILED
AND/OR RECORDED ON

JUN 17 1 02 PM '94

ALICE G. EMMETT, CLERK
COUNTY RECORDER

BY Jaw DEPUTY