

Certified, Filed and or Recorded on  
Oct. 31, 2008 AT 08:20AM

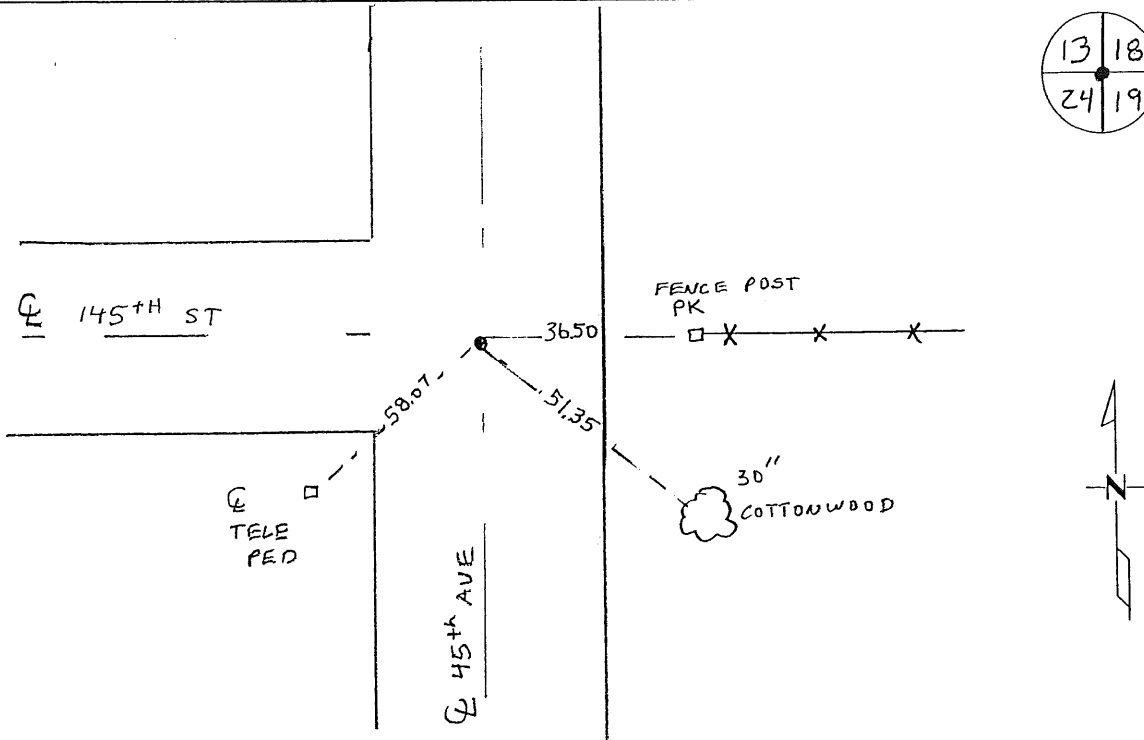
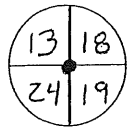
Signed: [Signature]  
MARILYN J NOVAK [Signature]  
BENTON COUNTY MINNESOTA  
MARILYN J NOVAK  
COUNTY RECORDER

### CERTIFICATE OF LOCATION OF GOVERNMENT CORNER

NORTHEAST Corner of Section 24, Township 38, Range 32  
4TH Principal Meridian, State of Minnesota, County of Benton

At the corner location shown on the sketch:

- On 08-21-08 found a CAST IRON MON AT E E
- left monument as found       lowered monument       removed monument (explain)
- On \_\_\_\_\_ placed an \_\_\_\_\_



Statement of evidence for this corner location is on back of this page.

I hereby certify that this document was researched and prepared by me or under my direct supervision and that I am a licensed Land Surveyor under the laws of the State of Minnesota.

Signature [Signature]  
Deputy County Surveyor  
License No. 43932

Date: 10/14/08

Benton County Surveyor's Office  
Chris Høglund, Deputy County Surveyor  
Minnesota License No. 43932

Statement of Evidence:

E242

Northeast Corner of Section 24, Township 38 North, Range 32 West, West Langola Township, 4<sup>th</sup> Principal Meridian, Benton County, Minnesota.

- 1849 Original US General Land Office survey set a wood post in a mound with pit 6 links east for the corner location.
- 1982 David Regan, LS 12236, found a 3/4" iron pipe in the centerline of a north/south/west road. He set a cast iron monument at the location and filed a Certificate of Location (#162606).
- 1995 Comstock and Davis performed GPS work under contract with Benton County and Coordinates Obtained by GPS NAD 83 (1986 Adjustment) to a CIM:  
N- 180147.608  
E - 446498.189
- 2002 Westwood Professional Services, Inc. found a cast iron monument.  
County Coordinates obtained by GPS (Cast Iron Monument)  
NAD 83 (1996 Adjustment)  
N-180147.925  
E-446497.465
- 2004 MN/DOT  
County Coordinates obtained by GPS  
NAD 83 (1996 Adjustment)  
N-180147.896  
E-446497.468
- 2008 Westwood Professional Services, Inc. found a CIM at the corner location. This location is ~1' from a lost position. CIM is accepted as marking the obliterated corner position. County Coordinates Obtained by GPS coincide with 2004 MN/DOT position.

# CERTIFICATE OF LOCATION OF GOVERNMENT CORNER

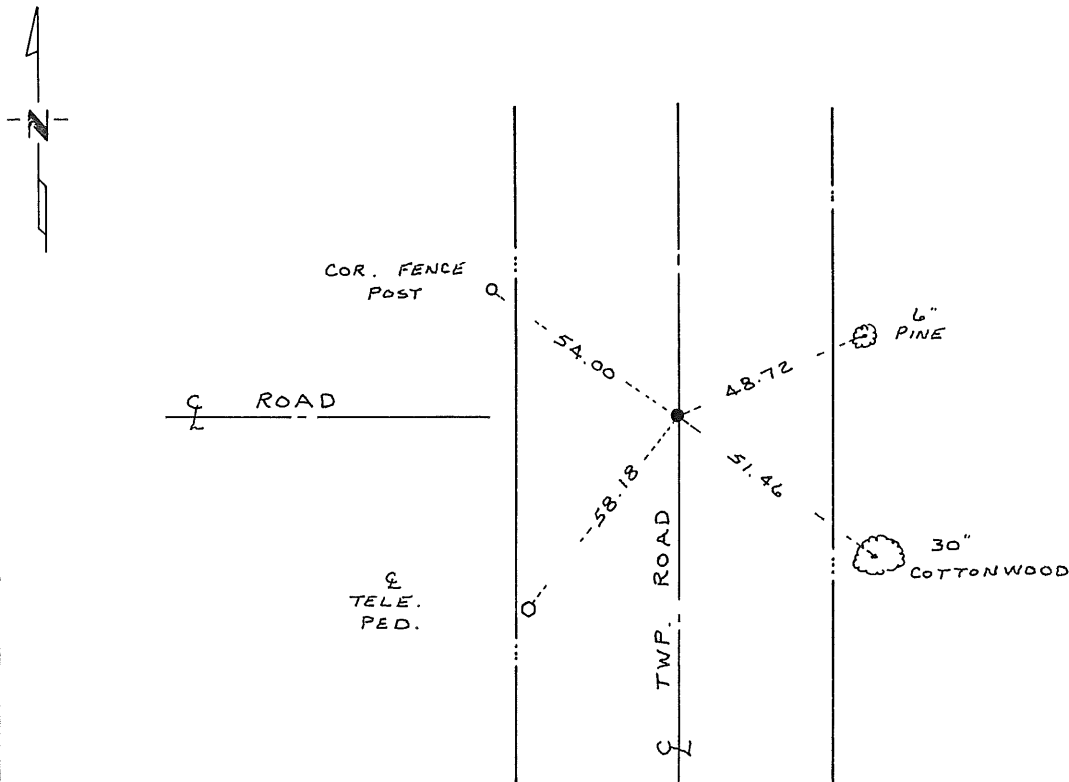
Northeast Corner of Section 24, Township 38, Range 32, 4th P.M.

STATE OF MINNESOTA, County of Benton

At the corner location shown on the sketch:

- On 6/17/82 found a 3/4 inch iron pipe in center line of north-south and west township roads  
DATE  
 left monument as found,  lowered monument,  removed monument (explain)
- On 6/17/82 placed a Benton County cast iron monument  
DATE

## SKETCH OF REFERENCE TIES



Statement of evidence relative to this corner location is on back of page.

I hereby certify that this document and the data contained herein was prepared by me or under my direct supervision.

David P. Ryan 7/13/82  
SIGNATURE DATE

Registration No. 12236

- Land Surveyor,  Professional Engineer
- County Surveyor,  County Engineer

OFFICE OF THE REGISTER OF DEEDS ~~County Record~~  
County of Benton

I hereby certify that this document was filed in the ~~County Record~~ Reg. of Deeds office at 10 A.M. on the 27 day of July A.D., 1982

Register of Deeds ~~County Record~~ F.E. Johnson

By \_\_\_\_\_, Deputy

DOCUMENT NO. 162606