

Certified, Filed and or Recorded on  
Sep. 23, 2008 AT 01:29PM

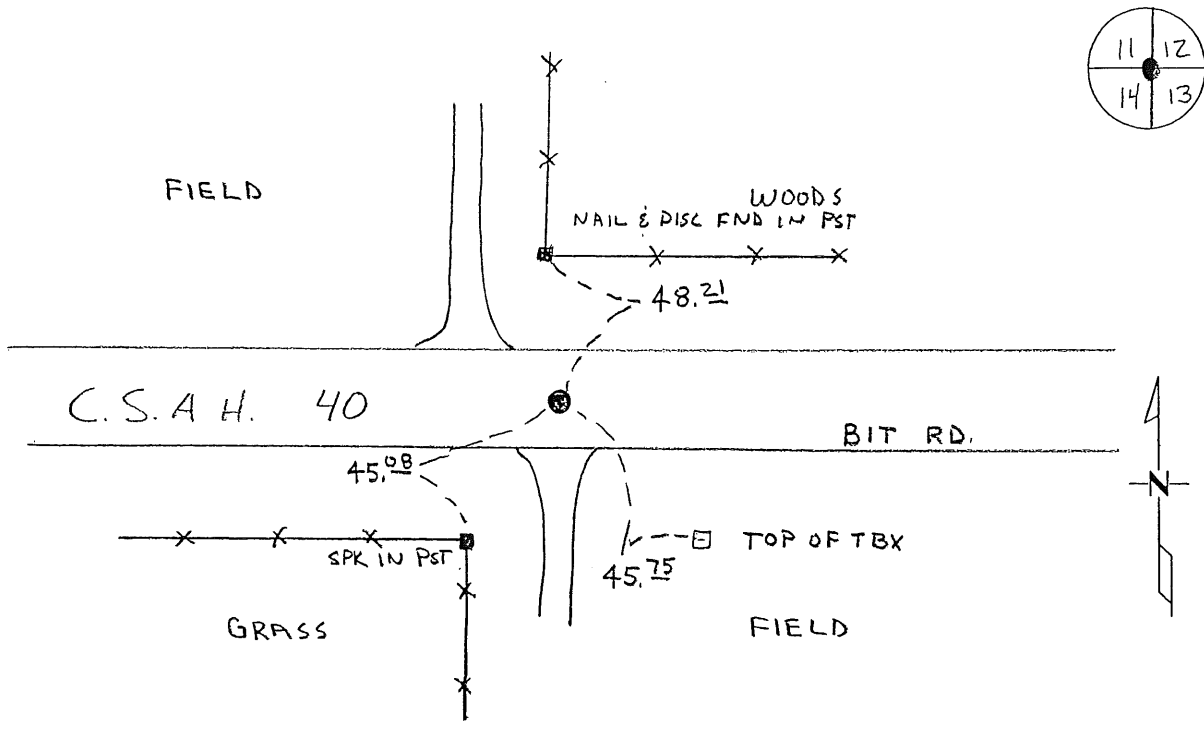
Signed: BW  
MARILYN J NOVAK G V  
BENTON COUNTY MINNESOTA  
MARILYN J NOVAK  
COUNTY RECORDER

### CERTIFICATE OF LOCATION OF GOVERNMENT CORNER

NE Corner of Section 14, Township 38, Range 32  
4TH Principal Meridian, State of Minnesota, County of Benton

At the corner location shown on the sketch:

- On 8-13-08 found a CAST IRON MON
- left monument as found       lowered monument       removed monument (explain)
- On \_\_\_\_\_ placed an \_\_\_\_\_



Statement of evidence for this corner location is on back of this page.

I hereby certify that this document was researched and prepared by me or under my direct supervision and that I am a licensed Land Surveyor under the laws of the State of Minnesota.

Signature [Handwritten Signature]  
Deputy County Surveyor  
License No. 43932

Date: 8/29/08

Benton County Surveyor's Office  
Chris Hogle, Deputy County Surveyor  
Minnesota License No. 43932

**Statement of Evidence:**

E142

The Northeast Corner of Section 14, Township 38 North, Range 32 West, West Langola Township, 4<sup>th</sup> Principal Meridian, Benton County, Minnesota.

1852 Original US General Land Office survey set a wood post at this location and bearing trees were recorded.

6" Bur Oak	S 42 E	56 links
13" Bur Oak	N 27 E	129 links

1943 Benton County Surveyors records note in Book 2, page 20 that H.G. Elletson found an iron monument in the centerline of a road and at a fence line with the following reference ties.

FP	N	58.60
FP	NW	39.90
6" Oak	NE	93.20
3" Oak	N	77.00

1971 Benton County Surveyors records also note in Book 2, page 20 a monument was found with the following reference ties.

PP	N	48.7
16" R. Oak	NE	94.9

1982 David Regan, LS 12236, found a 3/4" iron pipe in the centerline of a road east/west and a fence line north. He set a cast iron monument and filed a Certificate of Location (#162605). Tie to PP north is 48.93 feet.

1996 Information received from William Lunser, LS 9394, shows he found 1" iron pipe down 3 feet in road and set a CIM over. He shows a tie of 91.60 feet to a 24" Oak northeast and 48.14 feet to a PP north.

2000 Kevin Festler, LS 22702, found 2 cast iron monuments 5.62 feet apart.

2002 Westwood Professional Services, Inc. found two cast iron monuments approximately 5.0 feet apart and located both using GPS. It appears the westerly one was set by Regan and the easterly one by Lunser, based on their distances to adjacent corners and ties.

Lunser's CIM to 24" R. Oak NE is 91.57 feet  
Regan's CIM to 24" R. Oak NE is 94.79 feet

2003 Analysis of the information leads me to believe that the iron found by Lunser down 3 feet below the road surface is the one found by Elletson in 1943. It fits the tie to the oak better and is in line with the fence to the north. I believe the iron found by Regan is the one referred to 1971. I believe the older record is the best available evidence of the obliterated corner position. The CIM set by Lunser in 1996 is accepted as prima facie evidence of the corner. (Prepared by Gary H. Stevenson, LS #12684, Westwood Professional Services, Inc.)

**ACCEPTED CORNER**

County Coordinates (Lunser-Cast Iron Monument)

NAD 83 (1996 Adjustment)

N-185521.982

E-440901.039

2008 Westwood Professional Services, Inc. found Lunser CIM and confirms 2003 coordinate position. New ties are shown on the face of this certificate.

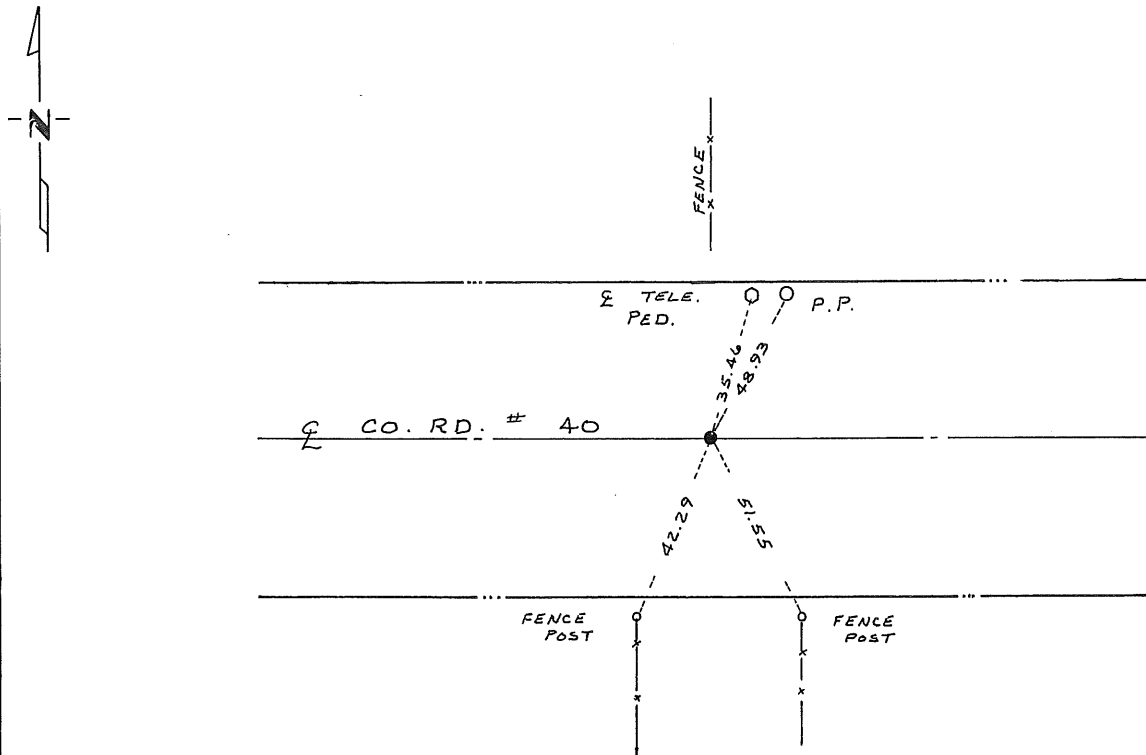
# CERTIFICATE OF LOCATION OF GOVERNMENT CORNER

Northeast Corner of Section 14, Township 38, Range 32, 4th P.M.  
STATE OF MINNESOTA, County of Benton

At the corner location shown on the sketch:

- On 6/17/82 found a 3/4 inch iron pipe in center line of east-west township road and on fence line north, 5 feet west of drwy south  
 left monument as found,  lowered monument,  removed monument (explain)
- On \_\_\_\_\_ placed a Benton County cast iron monument  
 DATE \_\_\_\_\_

## SKETCH OF REFERENCE TIES



Statement of evidence relative to this corner location is on back of page.

I hereby certify that this document and the data contained herein was prepared by me or under my direct supervision.

David P. Regan 7/13/82  
SIGNATURE DATE

Registration No. 12236

- Land Surveyor,  Professional Engineer
- County Surveyor,  County Engineer

OFFICE OF THE REGISTER OF DEEDS County Records  
County of Benton

I hereby certify that this document was filed in the Reg. of Deeds office at 102 P.M. on the 27 day of July A.D., 1982

Register of Deeds F.A. Johnson

By \_\_\_\_\_, Deputy

DOCUMENT NO. 162605