

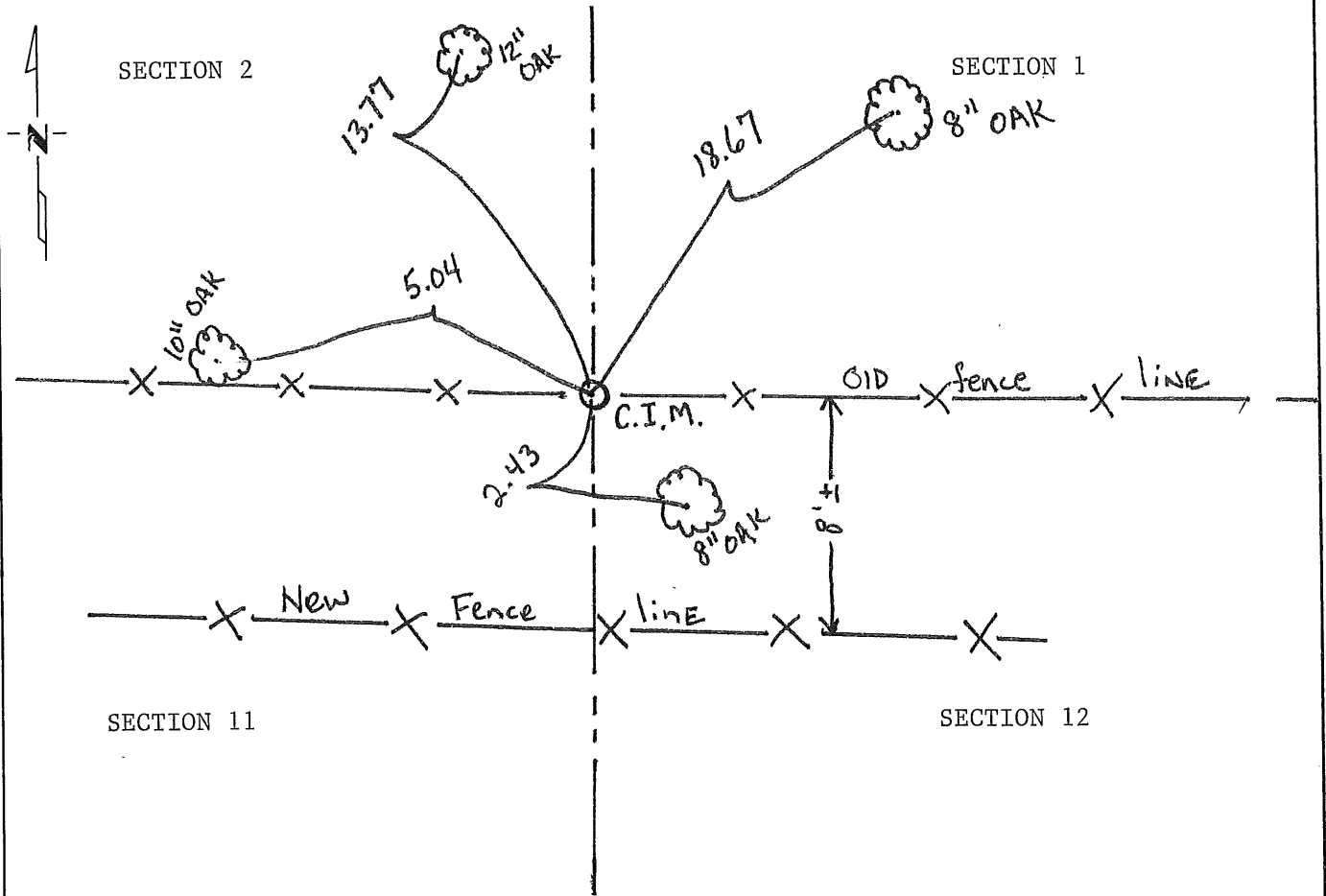
CERTIFICATE OF LOCATION OF GOVERNMENT CORNER

~~North~~ NORTHEAST Corner of Section 11, Township 38, Range 32, 4th P.M.
STATE OF MINNESOTA, County of Benton

At the corner location shown on the sketch:

- On _____ found a _____
DATE
- left monument as found, lowered monument, removed monument (explain)
- On 10-23-91 placed a Cast Iron Monument 8'± North of fence line East and West
DATE on old fence line running East and West

SKETCH OF REFERENCE TIES



Statement of evidence relative to this corner location is on back of page.

I hereby certify that this document and the data contained herein was prepared by me or under my direct supervision.

David P. Regan 5/12/94
SIGNATURE DATE

Registration No. 12236

- Land Surveyor, Professional Engineer
- County Surveyor, County Engineer

OFFICE OF THE REGISTER OF DEEDS

County of _____

I hereby certify that this document was filed in the Reg. of Deeds office at _____ .M. on the _____ day of _____ A.D., 19 _____

Register of Deeds _____

By _____, Deputy

DOCUMENT NO. _____

Statement of Evidence:

The G.L.O. survey was done in 1852 by Edwin James.

The County Surveyors records were researched with no reference to this corner.

On 10/91, Regan Land Surveyors, Inc. searched the area, then placed a cast iron monument 8 feet North \pm of new fence line and on old fence line running East and West.

223475

OFFICE OF
DENTON COUNTY RECORDER
DENTON COUNTY, TX
CERTIFIED TO BE FILED
AND FOR RECORDATION

JUN 17 1 02 PM '94

ALICE C. H. EYER
COUNTY CLERK

BY *Jed* DEPUTY

CERTIFICATE OF LOCATION OF GOVERNMENT CORNER

Northeast Corner of Section 11, Township 38, Range 32, _____ P.M.

STATE OF MINNESOTA, County of Benton

At the corner location shown on the sketch:

On 6-23-1977 found a 3/4" iron pipe
DATE

left monument as found, lowered monument, removed monument (explain)

On _____ placed a left as it was
DATE

SKETCH OF REFERENCE TIES



Refer to next page

Statement of evidence relative to this corner location is on back of page.

I hereby certify that this document and the data contained herein was prepared by me or under my direct supervision.

William F. Lusser 6-23-1977
SIGNATURE DATE

Registration No. 9374

Land Surveyor, Professional Engineer

County Surveyor, County Engineer

OFFICE OF THE REGISTER OF DEEDS *County Recorder*
County of Benton

I hereby certify that this document was filed in the Reg. of Deeds office at 9 .M. on the 20 day of December A.D., 1977

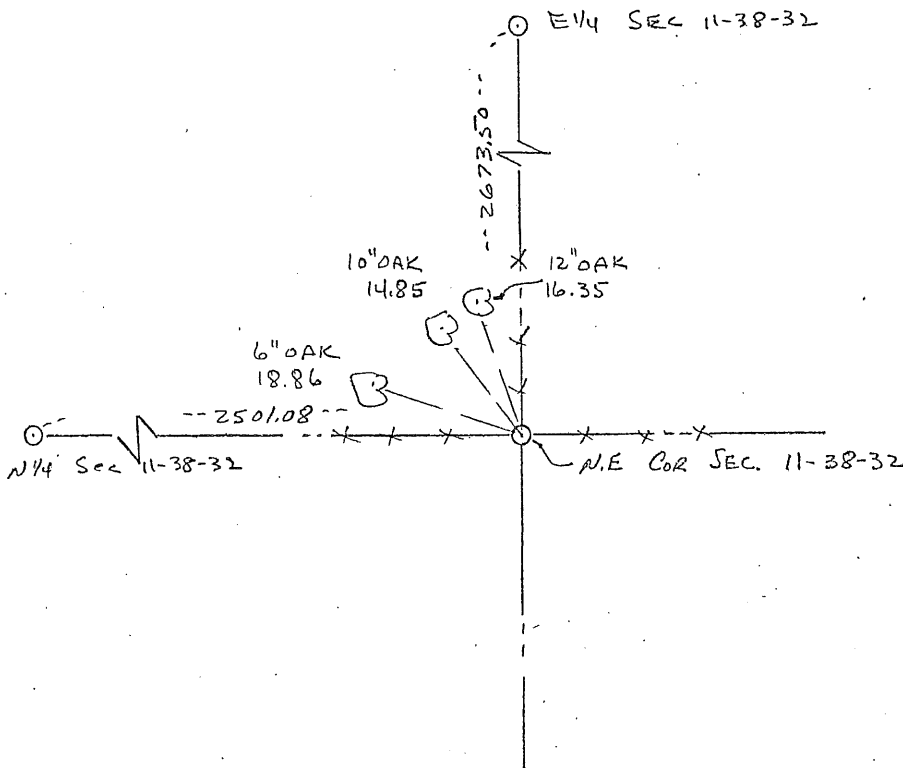
Register of Deeds W. A. Johnson
By *County Recorder*, Deputy

DOCUMENT NO. 147079

CERTIFICATE OF LOCATION OF GOVERNMENT CORNER

I hereby certify that on the 23 day of June, 1977
 I did find the northeast corner of Section 11,
 Twp. 38, Rg. 32, Benton County, Minnesota, which
 was evidenced by 3/4" iron pipe

I further certify that in order to perpetuate said corner I did
 at the exact location thereof place a permanent marker consisting
 of left as it was and that
 I did establish witness or reference monuments as shown below:



147079

I hereby certify that the
 above is true and correct
 and that I am a registered
 Land Surveyor under the laws
 of the State of Minnesota.

William J. Lunn

Minn. Registration No. 9394

County Recorder
 Office of the Register of Deeds,
Benton County, Minn.

I hereby certify that the within
 instrument was filed for record
 in this office on the 20th day of
December, 1977 at 9 A.M.

F.A. Johnson
 Register of Deeds

By County Recorder Deputy.