

Certified, Filed and or Recorded on
Nov. 05, 2008 AT 08:24AM

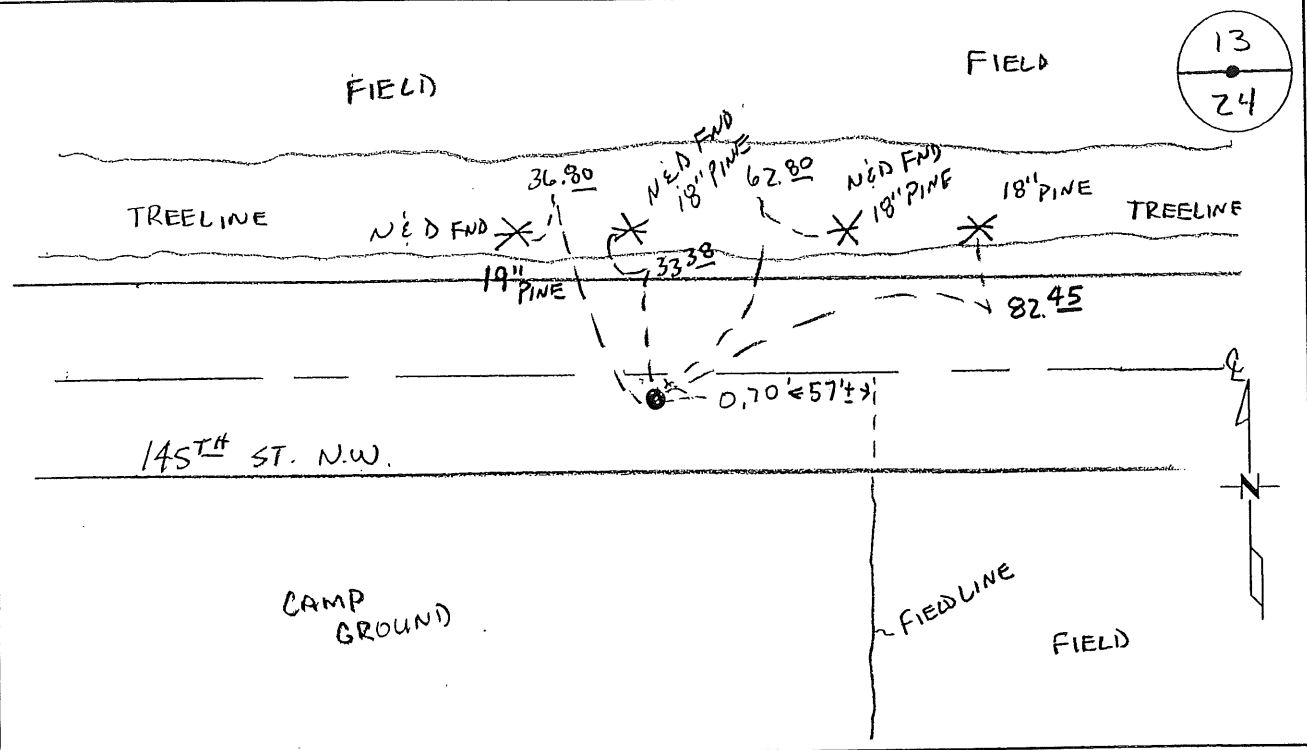
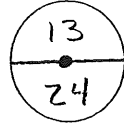
Signed: [Signature]
MARILYN J NOVAK G V I
BENTON COUNTY MINNESOTA
MARILYN J NOVAK
COUNTY RECORDER

CERTIFICATE OF LOCATION OF GOVERNMENT CORNER

NORTH QUARTER Corner of Section 24, Township 38, Range 32
4TH Principal Meridian, State of Minnesota, County of Benton

At the corner location shown on the sketch:

- On 10-16-08 found a 3/4" OPEN IRON PIPE
- left monument as found lowered monument removed monument (explain)
- On _____ placed an _____



Statement of evidence for this corner location is on back of this page.

I hereby certify that this document was researched and prepared by me or under my direct supervision and that I am a licensed Land Surveyor under the laws of the State of Minnesota.

Signature [Signature]
Deputy County Surveyor
License No. 43932

Date: 11/3/08
PAGE 1 OF 2

Benton County Surveyor's Office
 Chris Hoglund, Deputy County Surveyor
 Minnesota License No. 43932

Statement of Evidence:

E241

North Quarter Corner of Section 24, Township 38 North, Range 32 West, West Langola Township, 4th Principal Meridian, Benton County, Minnesota.

- 1852 Original US General Land Office survey set a wood post in a mound with pit 8 links east for the corner location.
- 1967 M. W. Carley Engineering set an iron at the corner.
- 1991 David Regan, LS 12236, found an iron monument as set by Carley in east/west centerline of township road. He filed Certificate of Location (Doc. No. 223472).
- 2002 Westwood Professional Services, Inc. found a 3/4" open iron pipe with a 1/2" open iron pipe 26 feet west. The 3/4" pipe appears to fit Regan's ties. The 3/4" iron pipe was found to be 2612.44 feet west of the NE corner of Section 24. **Corner needs further checking.**

County Coordinates (1/2" open w/broken cap)
 NAD 83 (1996 Adjustment)
 N-180119.046
 E-443885.185

County Coordinates (3/4" open)
 NAD 83 (1996 Adjustment)
 N-180118.712
 E-443859.074

2004 MN/DOT
 County Coordinates obtained by GPS
 NAD 83 (1996 Adjustment)
 N-180119.021
 E-443885.228

2008 Westwood Professional Services, Inc. found a 3/4" open iron pipe with a 1/2" open iron pipe 26 feet west. All four Regan ties are still present and fit 3/4" monument. The 3/4" iron pipe was found to be 2638.56 feet west of the NE corner of Section 24. 3/4" iron pipe is accepted as marking the obliterated position for this corner.

County Coordinates (3/4" open)
 NAD 83 (1996 Adjustment)
 N-180118.712
 E-443859.074

CERTIFICATE OF LOCATION OF GOVERNMENT CORNER

North Quarter Corner of Section 24, Township 38, Range 32, 4th P.M.

STATE OF MINNESOTA, County of Benton

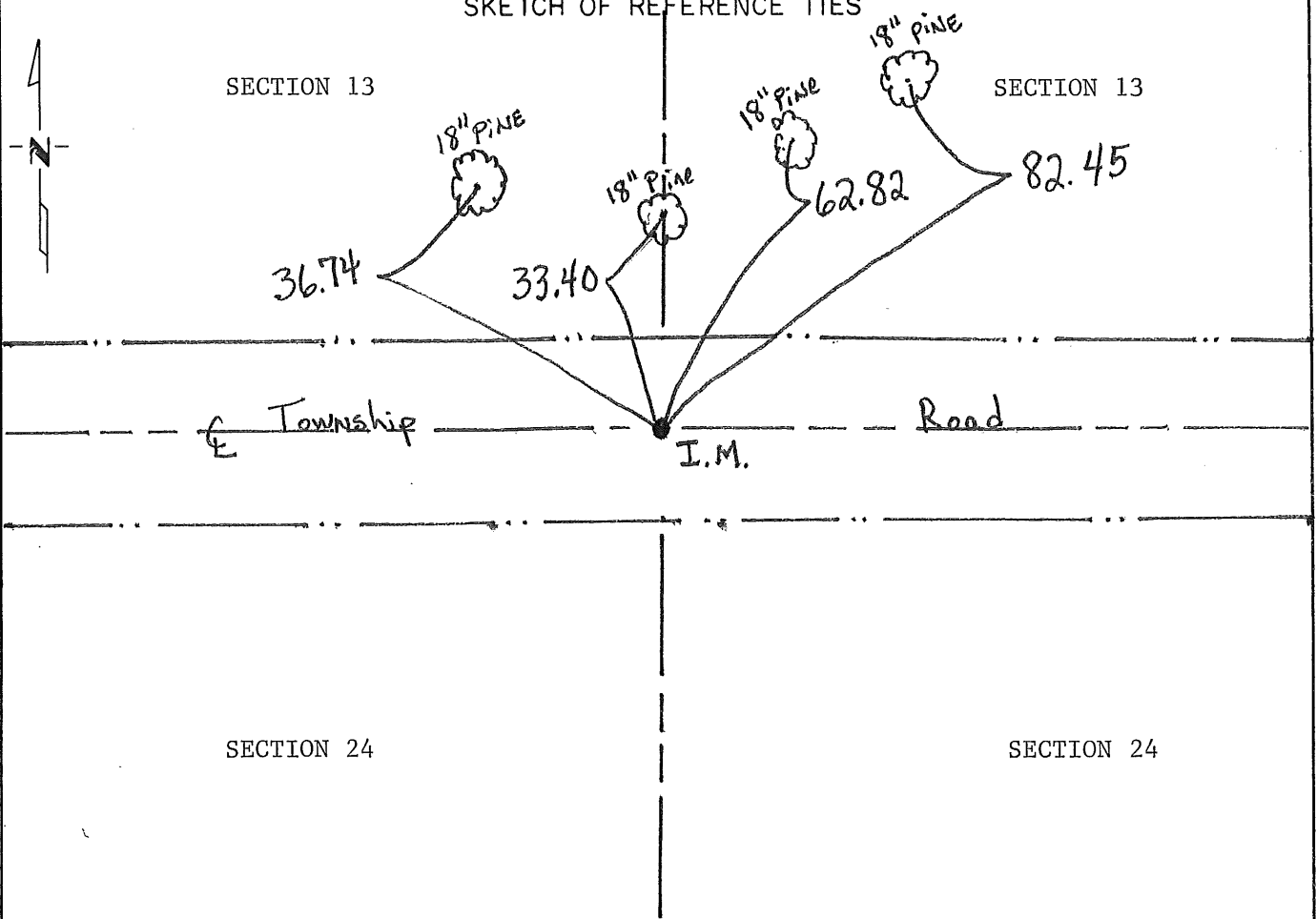
At the corner location shown on the sketch:

On 10-10-91 found a Iron Monument on center line of East-West township road
DATE

left monument as found, lowered monument, removed monument (explain)

On _____ placed a _____
DATE

SKETCH OF REFERENCE TIES



Statement of evidence relative to this corner location is on back of page.

I hereby certify that this document and the data contained herein was prepared by me or under my direct supervision.

David C. Regan 5/12/94
SIGNATURE DATE

Registration No. 12236

Land Surveyor, Professional Engineer

County Surveyor, County Engineer

OFFICE OF THE REGISTER OF DEEDS

County of _____

I hereby certify that this document was filed in the Reg. of Deeds office at _____ .M. on the _____ day of _____ A.D., 19 _____

Register of Deeds _____

By _____, Deputy

DOCUMENT NO. _____

Statement of Evidence:

The G.L.O. survey was done in 1852 by Edwin James.

The County Surveyors records were searched with no reference to this corner.

In 1/67, Carley Engineering set an iron monument at this corner.

On 10/91, Regan Land Surveying, Inc. searched the area and found the iron set by Carley Engineering.

223472

OFFICE OF
BENTON COUNTY RECORDER
BENTON COUNTY, MN
CERTIFIED TO BE FILED
AND/OR RECORDED ON:

JUN 17 1 02 PM '94

ALICE Q. EMMETT, CLERK
COUNTY RECORDER

BY Jaw DEPUTY