

Certified, Filed and or Recorded on  
Nov. 05, 2008 AT 08:35AM

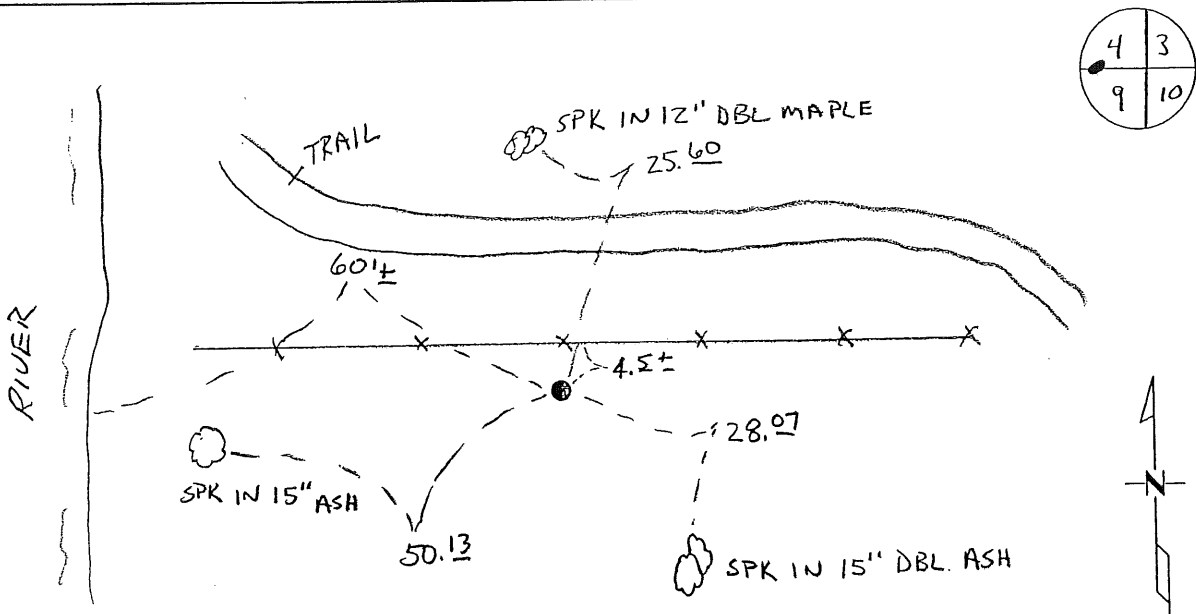
Signed: [Signature]  
MARILYN J NOVAK G V I  
BENTON COUNTY MINNESOTA  
MARILYN J NOVAK  
COUNTY RECORDER

### CERTIFICATE OF LOCATION OF GOVERNMENT CORNER

MC #9 ON NORTH LINE of Section 9, Township 38, Range 32  
4TH Principal Meridian, State of Minnesota, County of Benton

At the corner location shown on the sketch:

- On 8-19-08 found a CAST IRON MON
- left monument as found       lowered monument       removed monument (explain)
- On \_\_\_\_\_ placed an \_\_\_\_\_



Statement of evidence for this corner location is on back of this page.

I hereby certify that this document was researched and prepared by me or under my direct supervision and that I am a licensed Land Surveyor under the laws of the State of Minnesota.

Signature [Signature]  
Deputy County Surveyor  
License No. 43932

Date: 11/3/08

PAGE 1 OF 2

**Statement of Evidence:**

E09C

The Meander Corner No. 9 on the North line of Section 9, Township 38 North, Range 32 West, West Langola Township, 4<sup>th</sup> Principal Meridian, Benton County, Minnesota.

1852 Original US General Land Office surveyor, Edwin James, Jr., set a wood post at this location and bearing trees were recorded.

16" Bur Oak S 73 E 175 links

14" Bur Oak N 22 E 97 links

This corner is 13.50 chains west of the North ¼ corner of Section 9.

1979 On October 12, 1979 Paul Wellen found a 3/4" iron pipe +/- 4 feet south of a fence line (running east and west) and +/- 35 feet east of the river. He set a cast iron monument at the location and filed a Certificate of Location (#155143). Notes show corner 942.03 feet west of the North ¼ corner of Section 9.

2002 No resurvey information was found on this corner in the Benton County records.

2008 Westwood Professional Services, Inc. found a CIM ~4.5 feet south of east/west fence line. CIM measures 891.64 feet west of the MC on the north line of Section 9 (891 GLO). CIM is accepted as marking the obliterated position.

County Coordinates obtained with GPS

NAD 83 (1996 Adjustment)

N- 190719.939

E- 426507.535

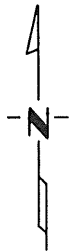
# CERTIFICATE OF LOCATION OF GOVERNMENT CORNER

I did find the M.C. on <sup>S. line</sup> \_\_\_\_\_ Corner of Section 4, Township 38, Range 32, \_\_\_\_\_ P.M.  
STATE OF MINNESOTA, County of Benton

At the corner location shown on the sketch:

- On 10-12-79 found a 3/4 inch iron pipe  
DATE
- left monument as found,  lowered monument,  removed monument (explain)
- On \_\_\_\_\_ placed a Benton County Cast Iron Monument  
DATE

## SKETCH OF REFERENCE TIES



Refer to next page

Statement of evidence relative to this corner location is on back of page.

99-154 R-14-8-88 County Recorder

I hereby certify that this document and the data contained herein was prepared by me or under my direct supervision.

Paul E. Wellen

SIGNATURE

DATE

Registration No. 10461

- Land Surveyor,  Professional Engineer
- County Surveyor,  County Engineer

OFFICE OF THE REGISTER OF DEEDS  
County of Benton

I hereby certify that this document was filed in the Reg. of Deeds office at 9 A: .M. on the 1st day of February A.D., 19 80  
County Recorder F.A. Johnson  
~~Register of Deeds~~

By \_\_\_\_\_, Deputy

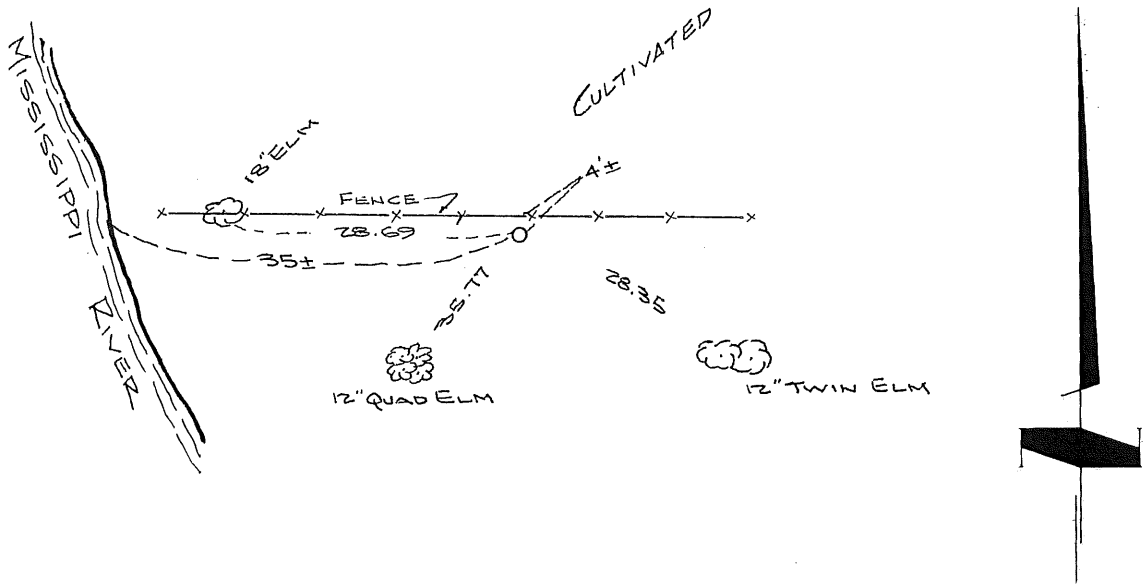
DOCUMENT NO. 155143

# CERTIFICATE OF LOCATION OF GOVERNMENT CORNER

14-30

I hereby certify that on the 12 day of October, 1979  
I did find the M.C. on S. line corner of Section 4,  
Twp. 38, Rg. 32, Benton County, Minnesota, which  
was evidenced by 3/4 inch iron pipe

I further certify that in order to perpetuate said corner I did  
at the exact location thereof place a permanent marker consisting  
of Benton County Cast Iron Monument and that  
I did establish witness or reference monuments as shown below:



155143

79-154 B-14 P-88

Office of the County Recorder,  
Benton County, Minn.

I hereby certify that the within instrument  
was filed for record in this office on the  
1st day of February, 1980  
at 9 A.M.

F. A. Johnson  
County Recorder

By \_\_\_\_\_ Deputy.

I hereby certify that the above  
is true and correct and that I am  
a registered Land Surveyor under  
the laws of the State of Minnesota.

Sandy Miller

Minn. Registration No. 10461