

Certified, Filed and or Recorded on
Feb. 12, 2010 AT 12:57PM

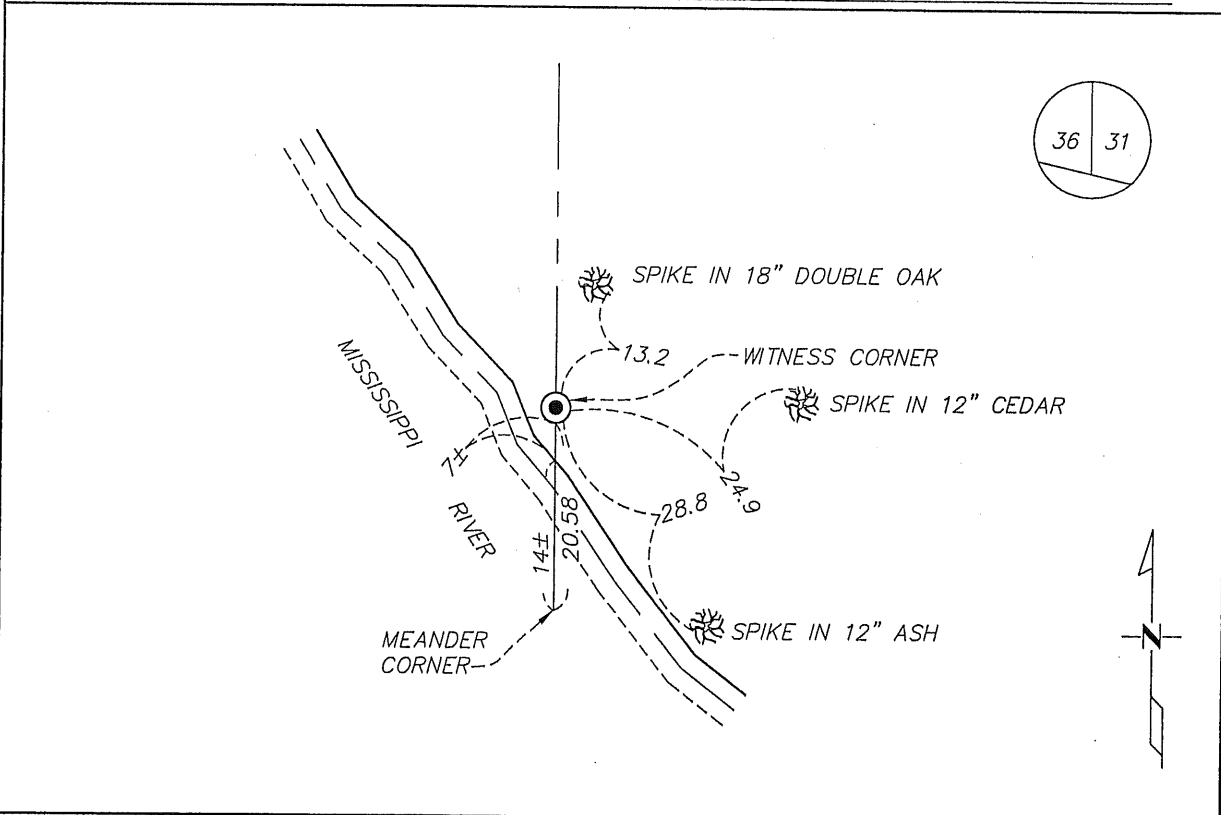
Signed: MJ
MARILYN J NOVAK G V I
BENTON COUNTY MINNESOTA
MARILYN J NOVAK
COUNTY RECORDER

CERTIFICATE OF LOCATION OF GOVERNMENT CORNER

Meander Corner No. 1 on the East line of Section 36, Township 38 North, Range 32 West,
Fourth Principal Meridian, Benton County, Minnesota.

At this corner location shown on the sketch:

- On _____ found a _____
- left monument as found lowered monument removed monument (explain)
- On 1/20/2010 placed an 1/2 inch by 14 inch iron pipe, cap number 19552 for
Witness Corner



Statement of evidence for this corner location is on back of this page.

I hereby certify that this document was researched and prepared by me or under my direct supervision and that I am a Licensed Land Surveyor under the laws of the State of Minnesota.

Signature Gordon H. Auld
Benton County Deputy Surveyor
License No. 45873

Date: 2/2/2010

Statement of Evidence:**E36M**

Meander Corner No. 1 on the East line of Section 36, Township 38 North, Range 32 West, West Langola Township, 4th Principal Meridian, Benton County, Minnesota.

1852 Original US General Land office survey set a wood post at this location and bearing trees were recorded.

Bur Oak N 42 E 45 links

16" Bur Oak N 28 W 89 links

This corner is 37.50 chains south of the Northeast Corner of Section 36.

2002 No resurvey information was found on this corner in the Benton County records.

2010 Westwood Professional Services, Inc. performed a search of the area for the Meander Corner and its accessories, however neither was found. The Meander Corner position was established as lost at 37.50 chains south of the Northeast Corner of Section 36. The computed position falls into the Mississippi River +/- 14 feet and an iron pipe capped #19552 was set as a witness corner on the east line of Section 36, 2454.41 feet south of the Northeast Corner of Section 36. Reference ties were established.

County Coordinates – Witness Corner
NAD 83 (1996 Adjustment)
N- 166906.35
E- 446834.67

County Coordinates – Meander Corner No. 1 (in river)
NAD 83 (1996 Adjustment)
N- 166885.76
E- 446834.62