

Certified, Filed and or Recorded on
Oct. 31, 2008 AT 08:21AM

Signed: M
MARILYN J NOVAK G V
BENTON COUNTY MINNESOTA
MARILYN J NOVAK
COUNTY SURVEYOR

CERTIFICATE OF LOCATION OF GOVERNMENT CORNER

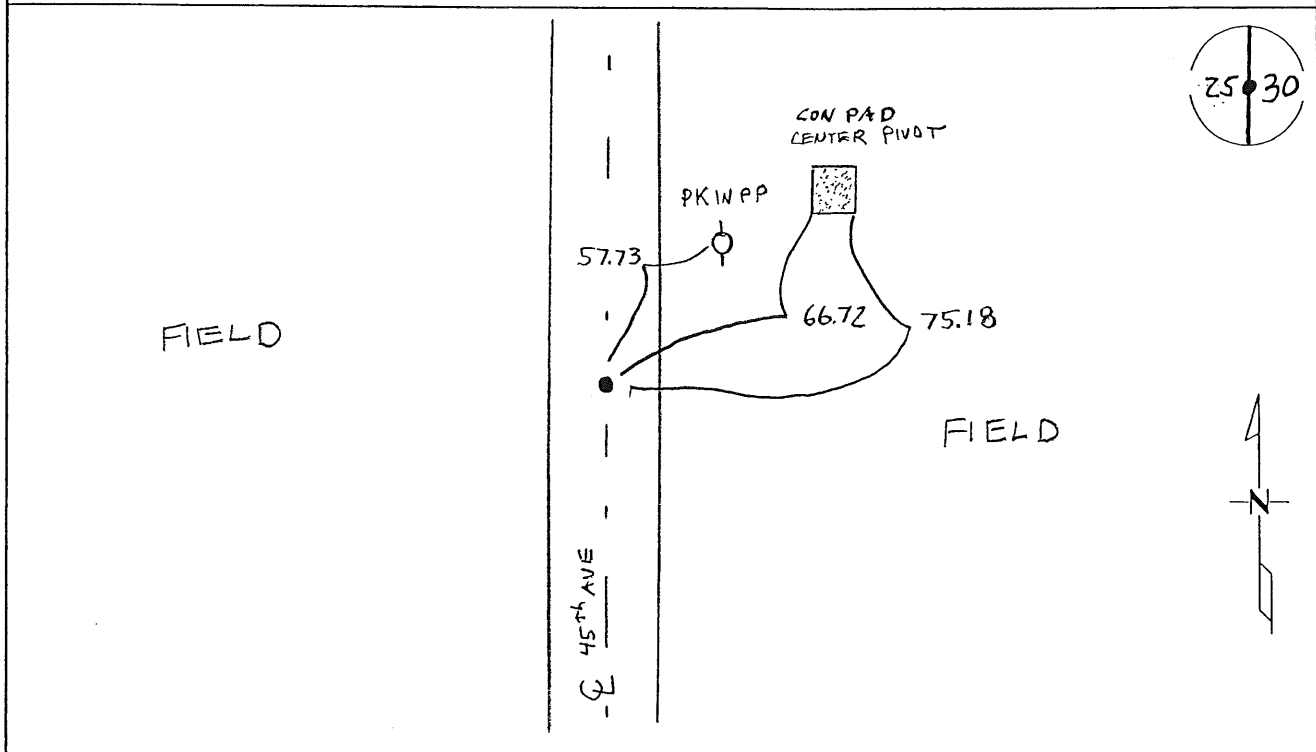
EAST QUARTER Corner of Section 25, Township 38, Range 32
4TH Principal Meridian, State of Minnesota, County of Benton

At the corner location shown on the sketch:

On 8-27-08 found a 1" SOLID I.P.

left monument as found lowered monument removed monument (explain)

On _____ placed an _____



Statement of evidence for this corner location is on back of this page.

I hereby certify that this document was researched and prepared by me or under my direct supervision and that I am a licensed Land Surveyor under the laws of the State of Minnesota.

Signature Ch. Hyslop
Deputy County Surveyor
License No. 43932

Date: 10/14/08

Benton County Surveyor's Office
 Chris Hoglund, Deputy County Surveyor
 Minnesota License No. 43932

Statement of Evidence:

E253

The East Quarter Corner of Section 25, Township 38 North, Range 32 West, West Langola Township, 4th Principal Meridian, Benton County, Minnesota.

- 1849 Original US General Land Office survey set a wood post in a mound with a pit links north at the corner location.

- 2002 No resurvey information was found on this corner in the Benton County records. Westwood Professional Services, Inc. found a 1" solid pin on a north/south centerline and a tree line far to the east.
 County Coordinates obtained by GPS (1" sq. Pin)
 NAD 83 (1996 Adjustment)
 N-172061.146
 E-446742.423

- 2008 Westwood Professional Services, Inc. found a 1" square solid pin at the corner location. The pin falls 4.6' west and 0.4' north of lost position. 1" pin is accepted as marking the obliterated corner position. County Coordinates Obtained by GPS coincide with 2002 position.