

Certified, Filed and or Recorded on
Oct. 31, 2008 AT 08:18AM

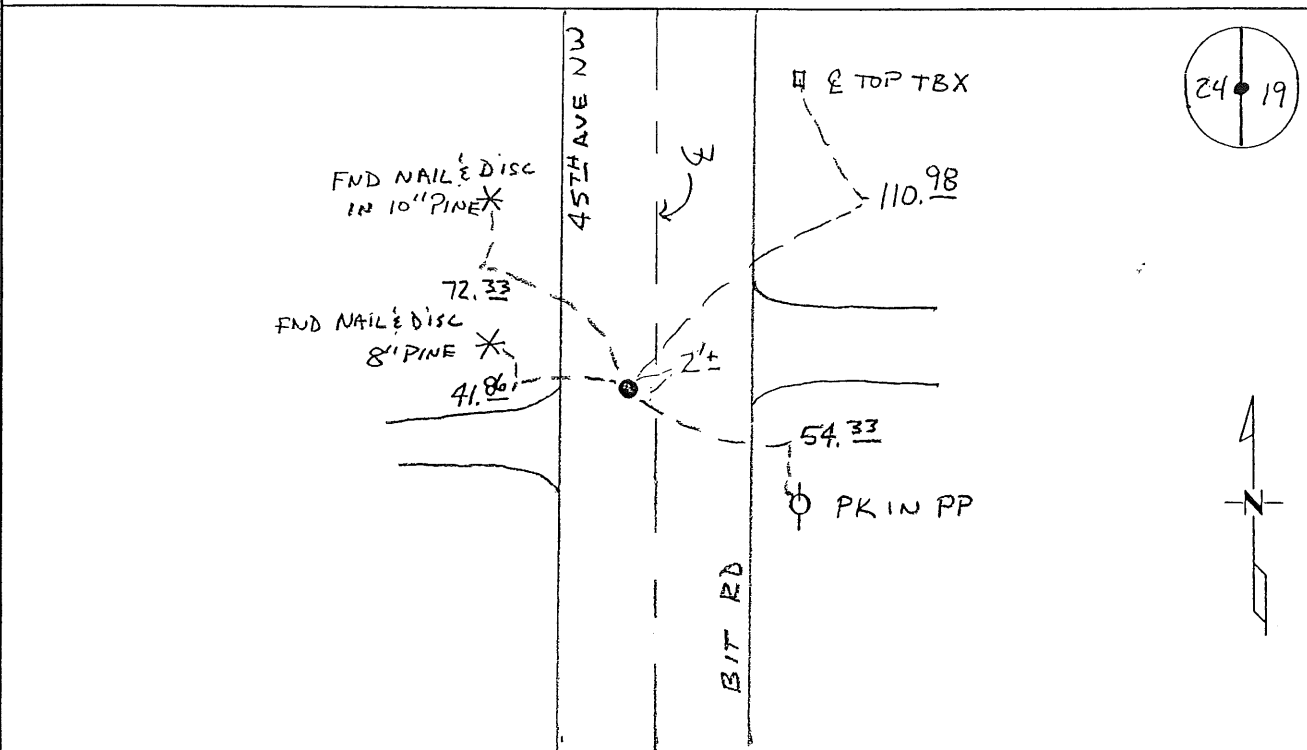
Signed: JN
MARILYN J NOVAK
BENTON COUNTY MINNESOTA
MARILYN J NOVAK
COUNTY RECORDER

CERTIFICATE OF LOCATION OF GOVERNMENT CORNER

EAST QUARTER Corner of Section 24, Township 38, Range 32
4TH Principal Meridian, State of Minnesota, County of Benton

At the corner location shown on the sketch:

- On 8-21-08 found a CAST IRON MON
- left monument as found lowered monument removed monument (explain)
- On _____ placed an _____

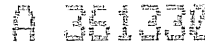


Statement of evidence for this corner location is on back of this page.

I hereby certify that this document was researched and prepared by me or under my direct supervision and that I am a licensed Land Surveyor under the laws of the State of Minnesota.

Signature Ch. [Signature]
Deputy County Surveyor
License No. 43932

Date: 10/14/08



Benton County Surveyor's Office
Chris Hoglund, Deputy County Surveyor
Minnesota License No. 43932

Statement of Evidence:

E243

East Quarter Corner of Section 24, Township 38 North, Range 32 West, West Langola Township, 4th Principal Meridian, Benton County, Minnesota.

- 1849 Original US General Land Office survey set a post in a mound with a pit 6 links east at the corner location.
- 1982 David Regan, LS 12236, found a 1/2" iron pipe 2' west of North/south centerline and 6' north of a field road west. He set a cast iron monument at the location and filed a Certificate of Location (#162607).
- 2002 No resurvey information was found in the Benton County records. Westwood Professional Services, Inc. found a cast iron monument at the intersection of the centerlines of County Road 43, running north and south, and an occupation line from the east.
County Coordinates Obtained by GPS (Cast Iron Monument)
NAD 83 (1996 Adjustment)
N-177454.774
E-446574.218
- 2004 MN/DOT
County Coordinates obtained by GPS
NAD 83 (1996 Adjustment)
N-177454.758
E-446574.294
- 2008 Westwood Professional Services, Inc. found a cast iron monument 2' west of North/south centerline and 6' north of a field road west. CIM is ~0.9' NW of lost position. CIM is accepted as marking the obliterated position for this corner. County Coordinates obtained by GPS coincide with 2004 MN/DOT position.

CERTIFICATE OF LOCATION OF GOVERNMENT CORNER

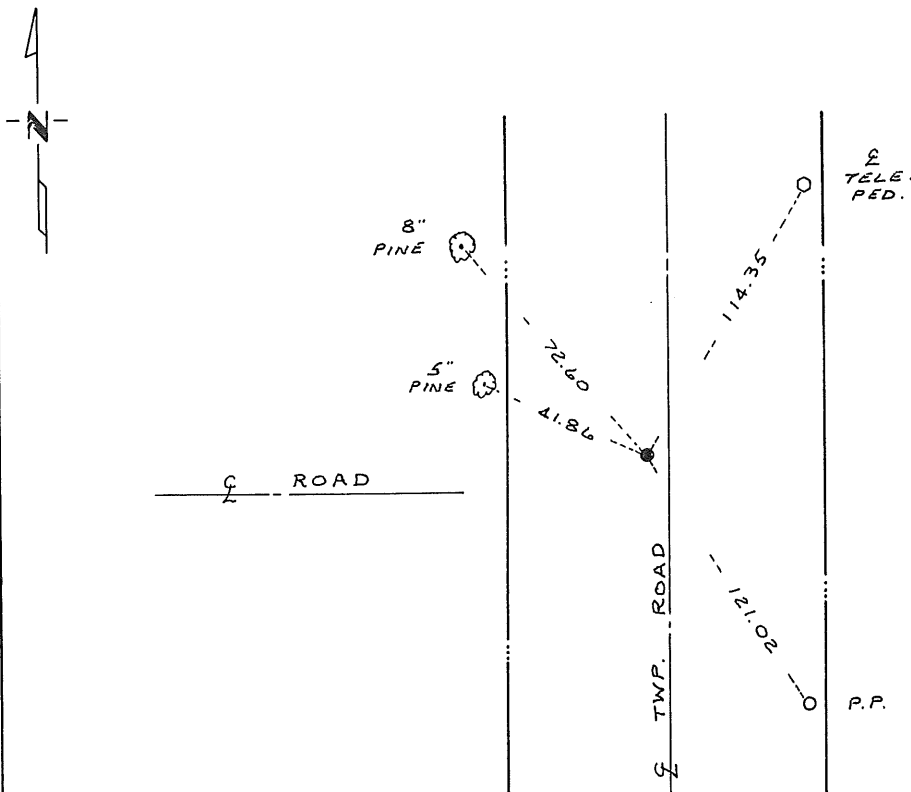
East Quarter _____ Corner of Section 24, Township 38, Range 32, 4th P.M.

STATE OF MINNESOTA, County of Benton

At the corner location shown on the sketch:

- On 6/17/82 found a 1/2 inch iron pipe 2 feet west of center line
DATE
of north-south township road and 6 feet north of field road west
 left monument as found, lowered monument, removed monument (explain)
- On 6/17/82 placed a Benton County cast iron monument
DATE

SKETCH OF REFERENCE TIES



Statement of evidence relative to this corner location is on back of page.

I hereby certify that this document and the data contained herein was prepared by me or under my direct supervision.

David S. Regan 7/13/82
SIGNATURE DATE

Registration No. 12236

- Land Surveyor, Professional Engineer
- County Surveyor, County Engineer

OFFICE OF THE REGISTER OF DEEDS County Recorder
County of Benton

I hereby certify that this document was filed in the Reg. of Deeds office at 10 A.M. on the 27 day of July A.D., 1982

Register of Deeds County Recorder F.A. Johnson

By _____, Deputy

DOCUMENT NO. 162607