

7-13

A 375358

Certified, Filed and or Recorded on  
July 13, 2010 AT 04:14PM

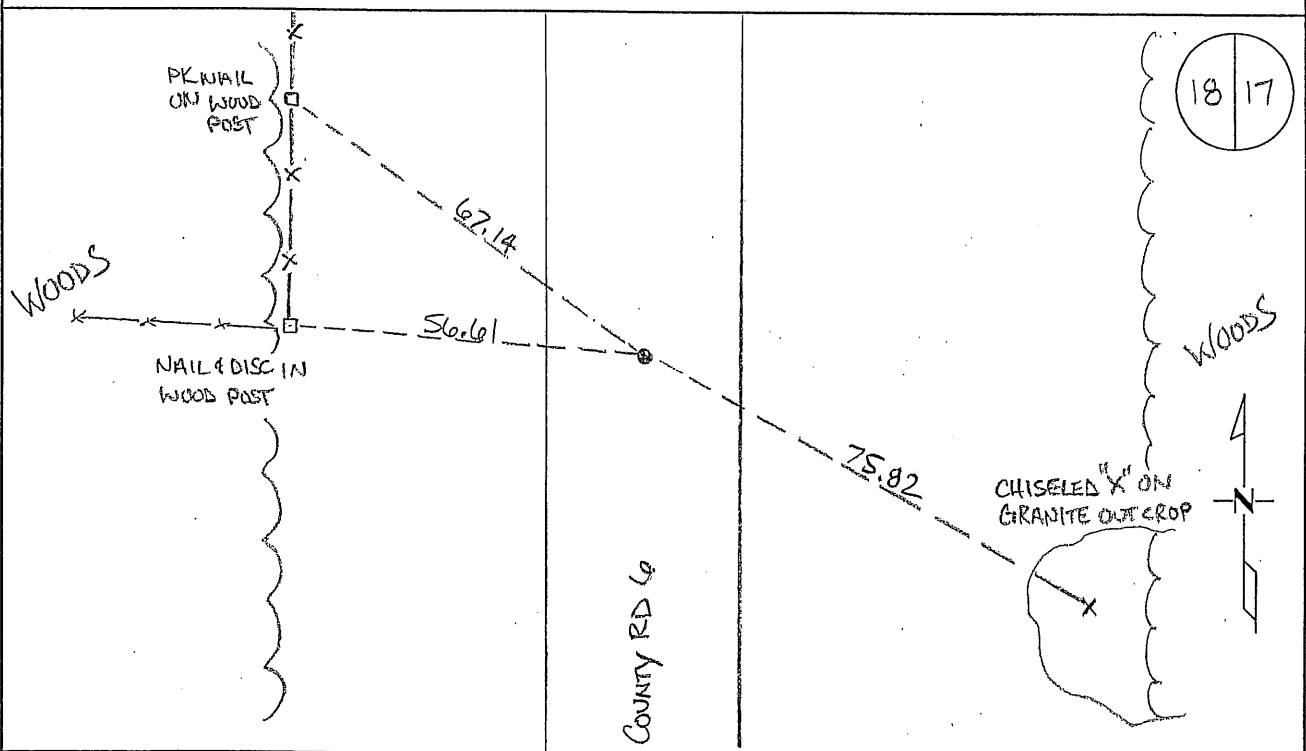
Signed: CK  
MARILYN J NOVAK G V I  
BENTON COUNTY MINNESOTA  
MARILYN J NOVAK  
COUNTY RECORDER

### CERTIFICATE OF LOCATION OF GOVERNMENT CORNER

EAST QUARTER Corner of Section 18, Township 38, Range 28.  
4TH Principal Meridian, State of Minnesota, County of Benton

At the corner location shown on the sketch:

- On 07/09/10 found a CAST IRON MONUMENT
- left monument as found       lowered monument       removed monument (explain)
- On \_\_\_\_\_ placed an \_\_\_\_\_



Statement of evidence for this corner location is on back of this page.

I hereby certify that this document was researched and prepared by me or under my direct supervision and that I am a licensed Land Surveyor under the laws of the State of Minnesota.

Signature Jerome C. Wittstock  
Benton County Surveyor  
License No. 19552

Date: 7/12/2010

Hwy Dept

Benton County Surveyor's Office  
 Jerome C. Wittstock, County Surveyor  
 Minnesota License No. 19552

Statement of Evidence:

A183

East Quarter Corner of Section 18, Township 38 North, Range 28 West, Granite Ledge  
 Township, 4<sup>th</sup> Principal Meridian, Benton County, Minnesota.

- 1855 Original US General Land Office survey set a wood post at this location and bearing trees were recorded.
- |           |            |          |
|-----------|------------|----------|
| 8" Sugar  | S 57 E     | 6 links  |
| 10" Sugar | N 37 1/2 W | 19 links |
- 1933 County Engineer's notebook No. 68 for SAR 6 does show this corner, but shows POT at ¼ line marked by a fence line west. Stationing gives distance of 2672.4 feet to the SE corner and 2672.6 feet to the NE corner.
- 1953 County Engineer's Notebook No. 196 contains a road survey for SAR 6 running from south to north on section line. Corner is shown as a POT with fence west. Same ties as 1954 below.
- 1953 County Surveyor's Record Book 2, page 334, shows Highway reference ties:
- |                 |    |      |
|-----------------|----|------|
| 12" W. Oak      | SW | 65.8 |
| Twin W. Oak     | E  | 32.5 |
| Fence line west |    |      |
- Highway stationing shows POT at 317+84.1 (2673.3 feet from SE corner and 2673.0 feet from NE corner.)
- 2001 Westwood Professional Services, Inc. found a RR spike at the centerline of County Road 6 (running north and south). Removed the RR spike and placed a cast iron monument at the location and established reference ties. Measured 2677.01 feet to the SE corner and 2671.77 feet to the NE corner.
- 2007 The Benton County Surveyor's Office found the CIM set in 2001 in the north-south centerline and on an old down fence to the west. . GPS coordinates were obtained
- County Coordinates  
 NAD 83 (1996 Adjustment)  
 N-182714.014  
 E-547125.116
- 2010 The CIM was found in good condition. The distance north fits the 1933 and 1953 distance within approximately a foot. The distance south to a stone found by excavation measures 2681.37, being approximately 8 feet long of the 1933 and 1953 distances. A fence at the south sixteenth falls approximately 3.5 feet north of a split between the CIM and stone at the southeast corner. The CIM position fits an east-west fence at the center of section 18 within 1 foot. The difference in measurement along the east line is not explainable. With the CIM position falling on the fence to the west and fitting the fence at the center of section and also fitting the 1933 and 1953 distances to the north, it is accepted as marking the obliterated corner position. The 2007 coordinates were verified and reference ties were established.