

CERTIFICATE OF LOCATION OF GOVERNMENT CORNER

EAST QUARTER Corner of Section 24, Township 38, Range 28

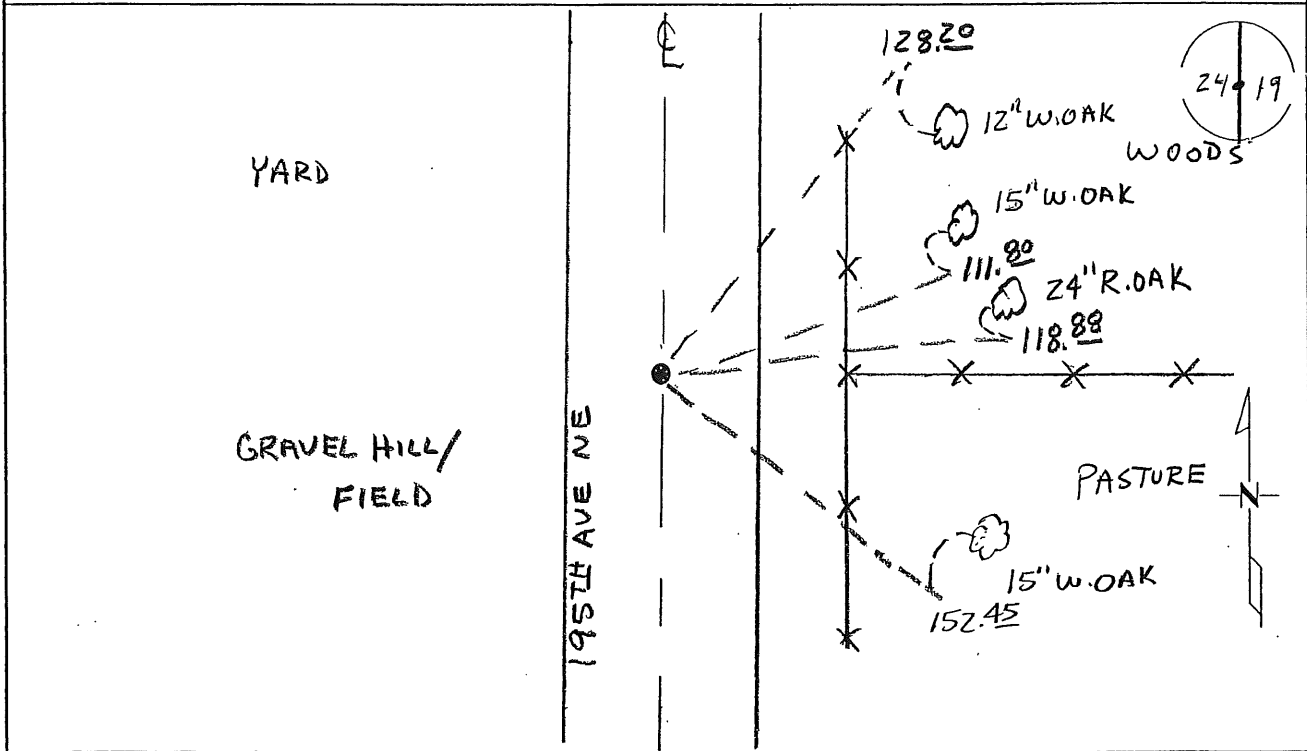
4TH Principal Meridian, State of Minnesota, County of Benton

At the corner location shown on the sketch;

On 11-19-08 found a 3/4" OPEN IRON PIPE

left monument as found lowered monument removed monument (explain)

On _____ placed an _____



Statement of evidence for this corner location is on back of this page.

I hereby certify that this document was researched and prepared by me or under my direct supervision and that I am a licensed Land Surveyor under the laws of the State of Minnesota.

Signature [Handwritten Signature]
Deputy County Surveyor
License No. 43932

Date: 12/17/08

Benton County Surveyor's Office
 Chris Hogleund, Deputy County Surveyor
 Minnesota License No. 43932

Statement of Evidence:

A243

East Quarter Corner of Section 24, Township 38 North, Range 28 West, Granite Ledge Township, 4th Principal Meridian, Benton County, Minnesota.

1855 Original US General Land Office surveyor, Oscar F. Davis, set a wood post at this location and bearing trees were recorded.

10" Sugar	S 57 1/2 W	25 links
6" Blk Ash	S 84 E	23 links

No Date County Surveyor's Record Book 2, page 356, notes the following ties:
 Red Bldr 7 ft E/W and 3 ft high in CL N 47 1/2 E 'X' on rock 170 links

1912 Mille Lacs County: Deputy County Surveyor, S.L. Kennedy, resurveyed Sec 8-38-27. He notes a wood stake in a bog at Gov't and Judicial road corner.

1996 John Oliver, LS and Mille Lacs County Surveyor placed a 3/4" X 14" pipe at the corner location based on Kennedy's distance from the SE corner in center of north-south road and filed a Certificate of Location (#244640). Corner agrees with fence line east.

County Coordinates from John Oliver & Associates by traverse
 NAD 83 (1986 Adjustment)

N- 177545.964

E- 573529.603

Information gives distances of 2645.90 feet to the SE corner and 2635.35 feet to the NE corner.

2003 Westwood Professional Services, Inc. found a 3/4" iron pipe agreeing with 1996 Oliver ties and distances to the NE and SE corners of Section 24. Iron pipe is accepted as marking the obliterated position for this corner.

County Coordinates Obtained by GPS to iron pipe:

NAD 83 (1996 Adjustment)

N- 177546.437

E- 573528.770

12-24

A 362608

Certified, Filed and or Recorded on
Dec. 26, 2008 AT 10:24AM

Signed: CK
MARILYN J NOVAK ~~VI~~
BENTON COUNTY MINNESOTA
MARILYN J NOVAK
COUNTY RECORDER

DOCUMENT COVER SHEET

Document Name: **GOVERNMENT CORNER**

BENTON COUNTY OF

THE PUBLIC

Document Date: **12/17/2008**

This cover sheet is being attached to this document to provide room for recording information and is considered part of this document

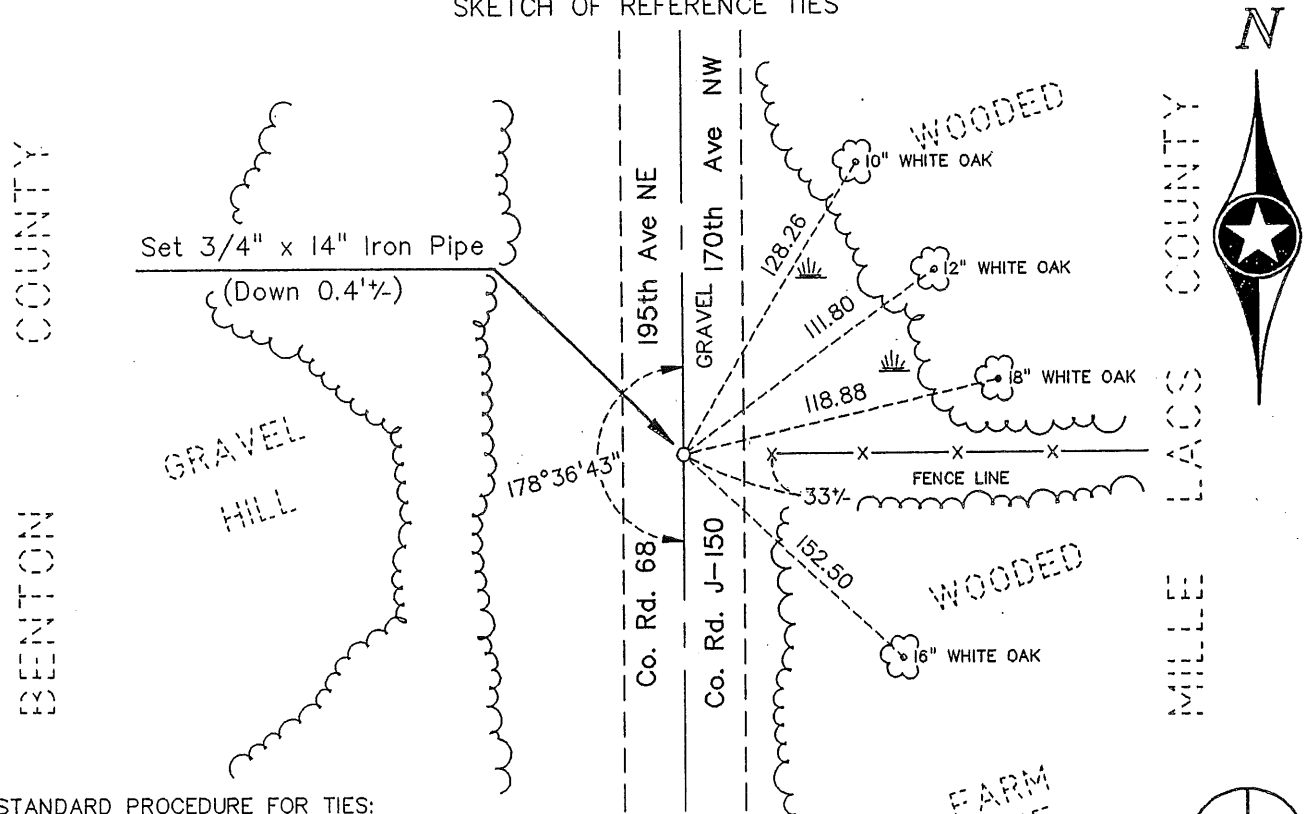
CERTIFICATE OF LOCATION OF GOVERNMENT CORNER

East Quarter _____ Corner of Section 24, Township 38, Range 28, 4 P.M.
 STATE OF MINNESOTA; County of BENTON

At the corner location shown on the sketch:

- On _____ found a _____
 DATE _____
- left monument as found, lowered monument, removed monument (explain)
- On 5/16/96 placed a 3/4" x 14" Iron Pipe (Down 0.4'±)
 DATE _____

SKETCH OF REFERENCE TIES



STANDARD PROCEDURE FOR TIES:
 Tree ties are to the head of a pole barn nail w/red ribbon set at 1", 1/4, out from face of blaze.
 Power poles, etc., are nail and washer in face.
 Building ties are to corner of foundation unless otherwise noted.

24 | 19

Statement of evidence relative to this corner location is on back of this page. 142/50

I hereby certify that this document and the data contained herein was prepared by me or under my direct supervision.

John O. Oliver 10/1/96
 SIGNATURE DATE

Registration No. 8194

- Land Surveyor Professional Engineer
 County Surveyor County Engineer

OFFICE OF THE REGISTER OF DEEDS
 County of BENTON

I hereby certify that this document was filed in the Register of Deeds office at _____ M. on the _____ day of _____ A.D., 19 _____

Register of Deeds _____

By _____, Deputy

DOCUMENT NO. _____

STATEMENT OF EVIDENCE

East Quarter Corner of Section 24, T. 38, R. 28, Benton Co., MN.

West Quarter Corner of Section 19, T. 38, R. 27, Mille Lacs Co., MN.

The line between Ranges 27 & 28, T. 38, was run by Dep. Surveyor Theo. Conkey in Oct. 1849. We were unable to find any remnants of his* monument or access-ories for this corner.

*Please see the Certificate Of Location for the NE corner of Section 1, T. 37, R. 28, Benton County; also being the NW corner of Sec. 6, T. 37, R. 27, Mille Lacs County; for a "discussion" regarding general conditions (including GLO resurveys and "Judicial Roads") affecting the locations of the corners along this County line.

In 1994 we were hired by Benton Co. to restore certain corners along their east Co. line. Old survey notes, subsequent to the GLO notes, from both counties are as follows (in chronological order):

Benton: Requested from the Co. Hwy. Dept.. None provided other than GLO notes.

Mille Lacs: In 1912 Deputy Co. Surveyor S.L. Kennedy resurveyed Sec. 8, T. 38, R. 27. The plat of said survey gives distances from the NW and SW corners of 8 west to proportional distance corners on a "theoretical" straight County line from found corners at the NW corner of Sec. 6 south to the W. 1/4 corner of Sec. 19. From the records at the Mille Lacs Co. Hwy. Dept., at a later date, a relationship between the said proportional distance corners and the corners of the "Judicial Road" were given. For example: "Theoretical SPM corner at 31.0' east and 12.54' south of Judicial Road Corner". (Also see the note above re. "conditions" along the County line)

Kennedy's survey stated that the subject corner was a wood stake "in bog at Govt. and Judicial Road Corner". No ties were given.

After finding the granite monument at the SW corner of said Sec. 19, we measured 2646', +/-, to the fence line running east near the subject corner. Since the corner falls about 175' n'ly of the crest of the hill, and on a slope down to the creek about another 750' to the north, and in a cut section of road, we held Kennedy's distance of 2645.86' north of said SW corner, but placed the corner on centerline of the "Judicial Road". We did not excavate. The ditch on the east side of the road has some cattails as remains of the "bog".

We are also aware of the following surveys by others with evidence pertaining to this corner: We are aware of no surveys other than that in 1994 Comstock & Davis, Inc., via their Little Falls office, was hired to provide Benton County coordinates on selected corners within the County. They did this with a combination of GPS and traditional methods. This corner was not a part of that project.

On 12/19/95 we set a spike with flagging at said corner. On 5/16/96 we re-placed said spike with a 3/4" by 14" iron pipe down 0.4', and made the ties on the front hereof.

MLCLS: /WQ193827

OFFICE OF
BENTON COUNTY RECORDER
BENTON COUNTY, MN
CERTIFIED TO BE FILED
AND/OR RECORDED ON
Oct 3 8 52 AM '97
ALICE G. ENGELMEYER
COUNTY RECORDER
BY *[Signature]* DEPUTY
xm

244640