

# CERTIFICATE OF LOCATION OF GOVERNMENT CORNER

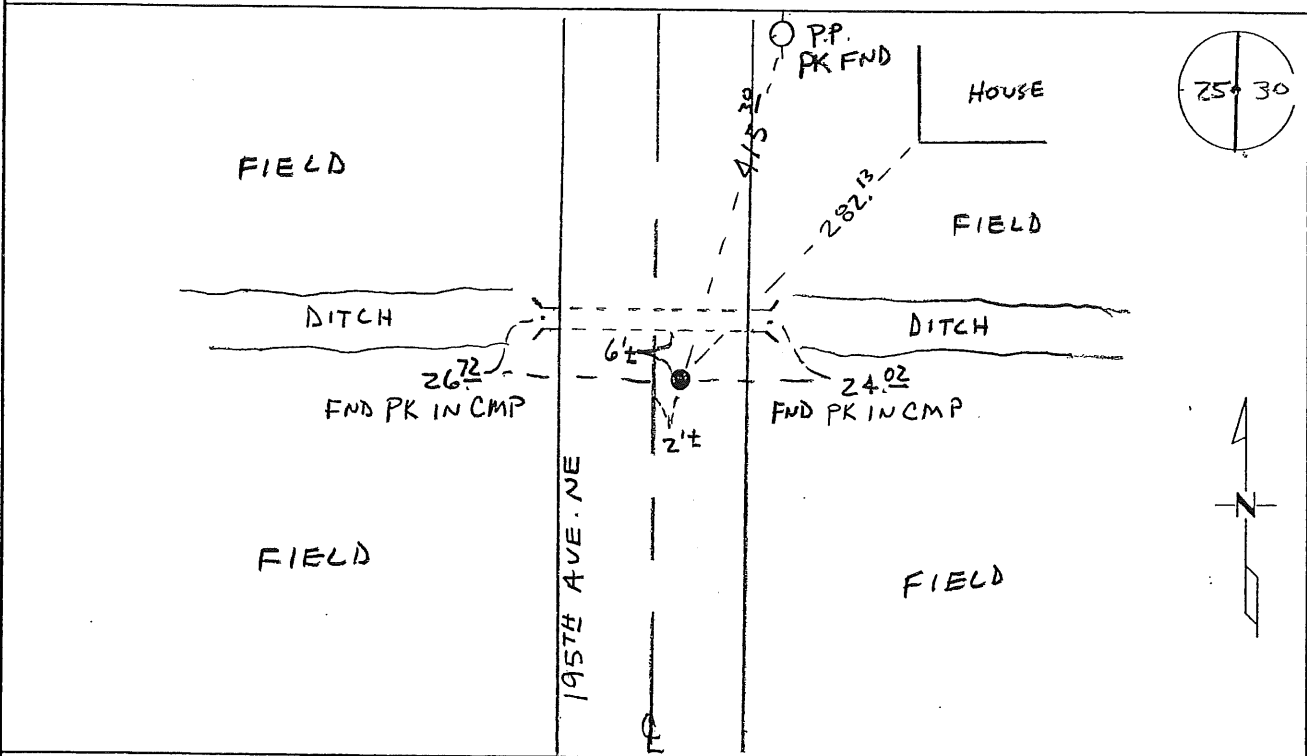
EAST QUARTER Corner of Section 25, Township 38, Range 28  
4TH Principal Meridian, State of Minnesota, County of Benton

At the corner location shown on the sketch:

On 11-20-08 found a CAST IRON MONUMENT

left monument as found       lowered monument       removed monument (explain)

On \_\_\_\_\_ placed an \_\_\_\_\_



Statement of evidence for this corner location is on back of this page.

I hereby certify that this document was researched and prepared by me or under my direct supervision and that I am a licensed Land Surveyor under the laws of the State of Minnesota.

Signature *Ch. H. [Signature]*  
Deputy County Surveyor  
License No. 43932

Date: 12/17/08

Benton County Surveyor's Office  
 Chris Hogleund, Deputy County Surveyor  
 Minnesota License No. 43932

Statement of Evidence:

A253

East Quarter Corner of Section 25, Township 38 North, Range 28 West, Granite Ledge Township, 4<sup>th</sup> Principal Meridian, Benton County, Minnesota.

- 1849 Original US General Land Office survey set a wood post at this location and bearing trees were recorded.
- |              |        |          |
|--------------|--------|----------|
| 10" Tamarack | S 55 E | 15 links |
| 10" Tamarack | N 67 W | 8 links  |
- 1902 County Surveyor's Record Book 2, page 358, and Record Book A, Map No. 37, contains a survey by John E. Whilt, which notes a distance of 39.87 chains (2631.42 feet) from the NE and SE corners, which indicates he set it lost. He also notes the following reference ties:
- |          |            |          |
|----------|------------|----------|
| 3' Stone | S 81 W     | 35 links |
| 3" Stone | N 51 1/2 W | 52 links |
- 1921 Mille Lacs County: R. S. Chapman did a survey of Section 30, Township 38, Range 27 of Mille Lacs County. He notes an iron pipe and a rock set at the lost position for the corner. The NW corner was a granite monument and the SW corner a 2" iron pipe.
- 1994 John Oliver, LS 8194, Mille Lacs County Surveyor found cut granite rock at the NE corner Sec 25 and also found Chapman's SE corner Sec 25 and the East 1/16 of SE 1/4 (both 2" pipes). The area of the corner was not excavated because of ditch and culvert at the corner area.
- 1996 John Oliver set a 3/4" X 14" pipe using Chapman's irons at the SE corner and the 1/16<sup>th</sup> corner and doubling and extending north. He filed a Certificate of Location (#244642).  
 County Coordinates from John Oliver & Associates by traverse  
 NAD 83 (1986 Adjustment)  
 N- 172248.330  
 E- 573536.296  
 Information shows distances of 2652.16 feet to the NE corner and 2646.49 feet to the SE corner, putting the corner within 3 feet of the lost position.
- 2008 Westwood Professional Services, Inc. found a CIM fitting 1996 Oliver ties. Measured 2652.18 feet to the NE corner and 2646.50 feet to the SE corner which agrees with Oliver distances. CIM is accepted as marking the obliterated position for this corner.  
 County Coordinates Obtained by GPS  
 NAD 83 (1996 Adjustment)  
 N-172248.834  
 E-573535.622

2-24

A 362607

Certified, Filed and or Recorded on  
Dec. 26, 2008 AT 10:18AM

Signed: CK  
MARILYN J NOVAK ~~EV~~ I  
BENTON COUNTY MINNESOTA  
MARILYN J NOVAK  
COUNTY RECORDER

## DOCUMENT COVER SHEET

Document Name: **GOVERNMENT CORNER**

**BENTON COUNTY OF**

**THE PUBLIC**

Document Date: **12/17/2008**

This cover sheet is being attached to this document to provide room for recording information and is considered part of this document

# CERTIFICATE OF LOCATION OF GOVERNMENT CORNER

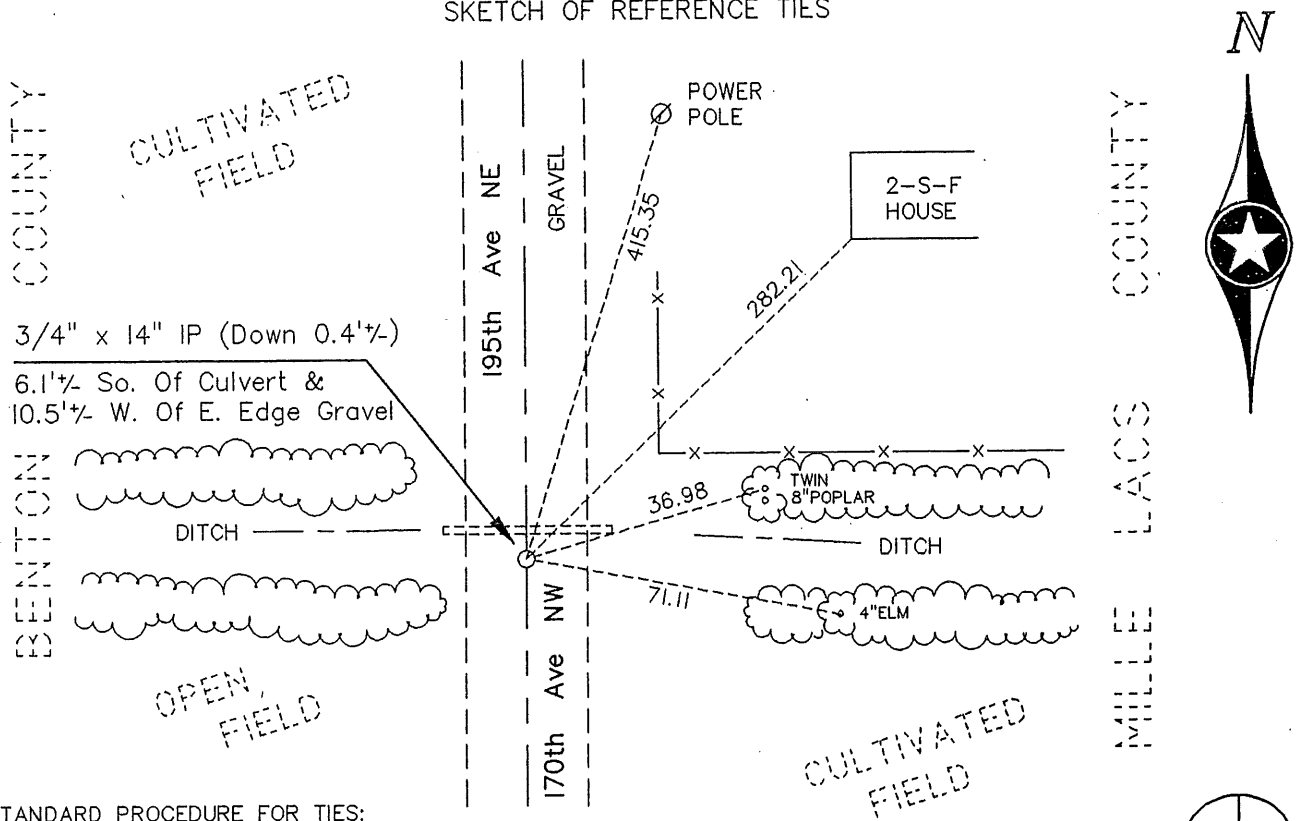
East Quarter Corner of Section 25, Township 38, Range 28, 4 P.M.

STATE OF MINNESOTA, County of BENTON

At the corner location shown on the sketch:

- On \_\_\_\_\_ found a \_\_\_\_\_  
DATE
- left monument as found,  lowered monument,  removed monument (explain)
- On 5/16/96 placed a 3/4" x 14" Iron Pipe (Down 0.4'±) @ Line & Distant From SW  
DATE  
Corner To W 1/16, SW 14, Doubled North.

SKETCH OF REFERENCE TIES



STANDARD PROCEDURE FOR TIES:

Tree ties are to the head of a pole barn nail w/red ribbon set at 1", 1/4", out from face of blaze.

Power poles, etc., are nail and washer in face.

Building ties are to corner of foundation unless otherwise noted.

Statement of evidence relative to this corner location is on back of this page.

142/51

I hereby certify that this document and the data contained herein was prepared by me or under my direct supervision.

John O. Shiner 10/1/96  
SIGNATURE DATE

Registration No. 8194

- Land Surveyor  Professional Engineer  
 County Surveyor  County Engineer

OFFICE OF THE REGISTER OF DEEDS  
County of BENTON

I hereby certify that this document was filed in the Register of Deeds office at \_\_\_\_\_ M. on the \_\_\_\_\_ day of \_\_\_\_\_ A.D., 19 \_\_\_\_\_

Register of Deeds \_\_\_\_\_

By \_\_\_\_\_, Deputy

DOCUMENT NO. \_\_\_\_\_

# STATEMENT OF EVIDENCE

East Quarter Corner of Section 25, T. 38, R. 28, Benton Co., MN.

West Quarter Corner of Section 30, T. 38, R. 27, Mille Lacs Co., MN.

The line between Ranges 27 & 28, T. 38, was run by Dep. Surveyor Theo. Conkey in Oct. 1849. We were unable to find any remnants of his\* monument or accessories for this corner.

\*Please see the Certificate Of Location for the NE corner of Section 1, T. 37, R. 28, Benton County; also being the NW corner of Sec. 6, T. 37, R. 27, Mille Lacs County; for a "discussion" regarding general conditions (including GLO resurveys and "Judicial Roads") affecting the locations of the corners along this County line.

In 1994 we were hired by Benton Co. to restore certain corners along their east Co. line. Old survey notes, subsequent to the GLO notes, from both counties are as follows (in chronological order):

Benton: Requested from the Co. Hwy. Dept.. None provided other than GLO notes.

Mille Lacs: A 1921 survey and plat of Sec. 30, T. 38, R. 27, by R.S. Chapman, County Surveyor. His plat states that the subject corner was a "iron pipe and rock" set at SPM along the west line of the section, and that said west line of this section was a "Judicial Road Survey". His plat gives dimensions for all the "40's" in the section as well as angles at the corners. He also indicates that the rest of the corners along the west line of the section were all "iron pipe and rock", except for the NW corner which was a cut granite rock. No other ties are given.

There are no other subsequent surveys along the subject line that we are aware of.

On 11/22/94 we excavated with Benton County's backhoe and found said cut granite rock at the NW corner of the section. We also found Chapman's SW corner and W. 1/16th of the SW 1/4 - both 2" iron pipes.

For the subject corner we did not excavate since the ditch and culvert installation most likely destroyed any prior monuments. On 5/16/96 we placed a 3/4" by 14" iron pipe, down 0.4,' at said position.

MLCLS: /WQ303827

BY *A. Engelmeier* DEPUTY  
ALICE Q. ENGELMEIER  
COUNTY RECORDER  
OCT 3 8 52 AM '97  
OFFICE OF  
BENTON COUNTY RECORDER  
BENTON COUNTY, MN  
CERTIFIED TO BE FILED  
AND/OR RECORDED ON

244642