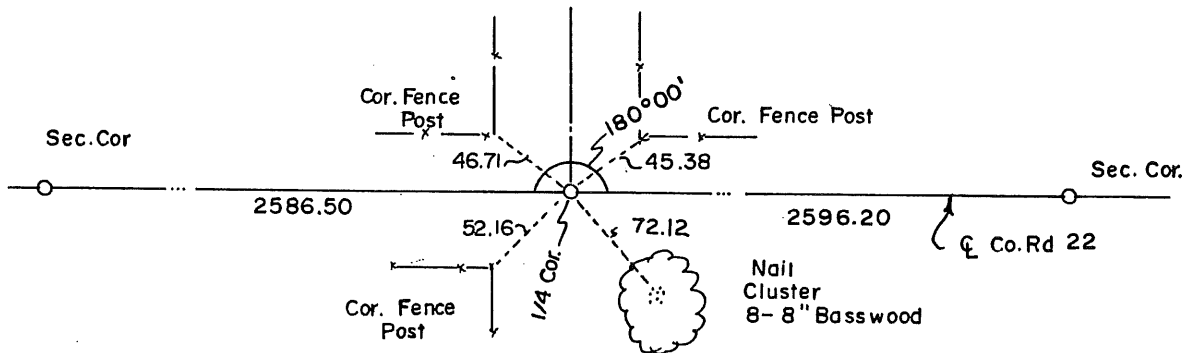


CERTIFICATE OF LOCATION OF GOVERNMENT CORNER

I hereby certify that on the 28th day of July, 1982
 I did Set the North Quarter corner of Section 9,
Twp. 38, Rg. 28, Benton County, Minnesota, which
 was evidenced by The occupation North and South and straight
line between the Northwest corner and Northeast corner of said
Section 9

I further certify that in order to perpetuate said corner I did
 at the exact location thereof place a permanent marker consisting
 of Benton County Cast Iron Monument and that
 I did establish witness or reference monuments as shown below:



173447

I hereby certify that the
 above is true and correct
 and that I am a registered
 Land Surveyor under the laws
 of the State of Minnesota.

Walter F. L...

Minn. Registration No. 9394

Office of the County Recorder,
Benton County, Minn.

I hereby certify that the within
 instrument was filed for record
 in this office on the 16th day of
May, 1985 at 3:PM

Alfred C. Engelmeyer
 County Recorder

By _____ Deputy.