

7-13

A 375360

Certified, Filed and or Recorded on
July 13, 2010 AT 04:14PM

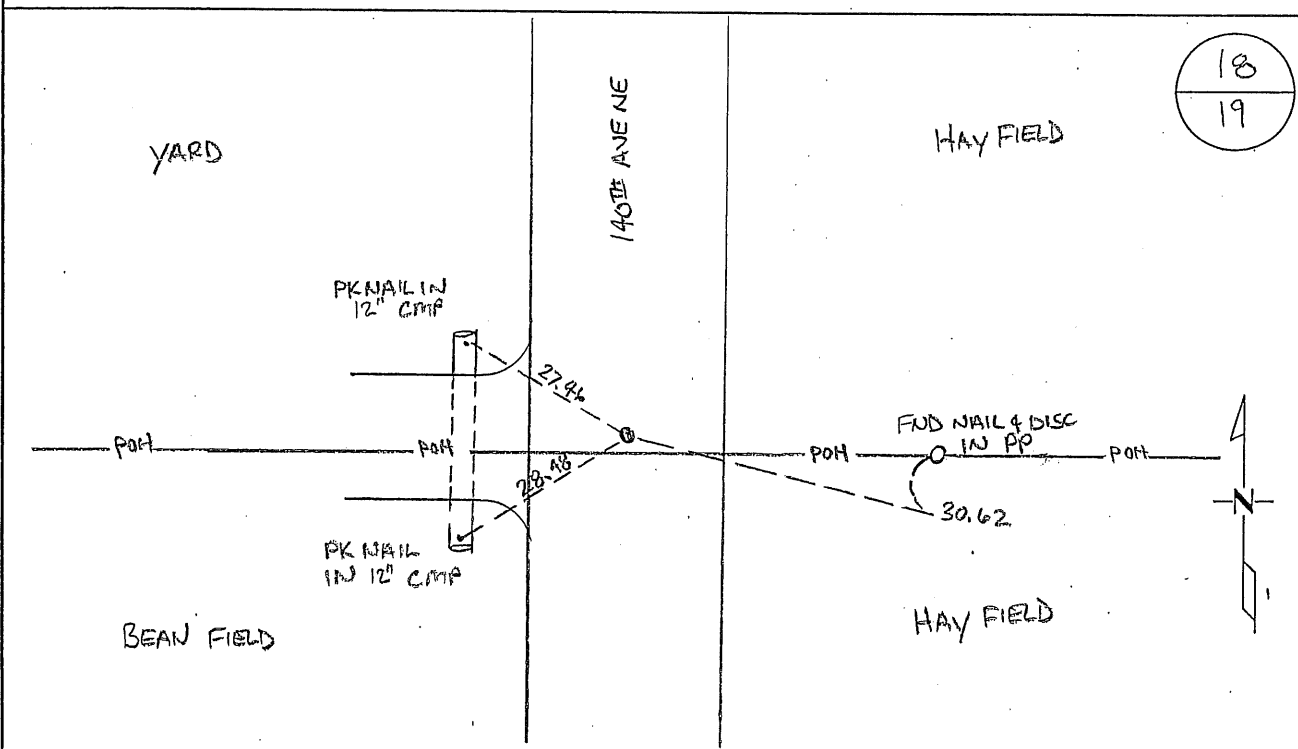
Signed: CK
MARILYN J NOVAK G V I
BENTON COUNTY MINNESOTA
MARILYN J NOVAK
COUNTY RECORDER

CERTIFICATE OF LOCATION OF GOVERNMENT CORNER

NORTH QUARTER Corner of Section 19, Township 38, Range 28
4TH Principal Meridian, State of Minnesota, County of Benton

At the corner location shown on the sketch:

- On 07/09/10 found a 3/4" OPEN PIPE UNDER 8" SPIKE
- left monument as found lowered monument removed monument (explain)
- On _____ placed on _____



Statement of evidence for this corner location is on back of this page.

I hereby certify that this document was researched and prepared by me or under my direct supervision and that I am a licensed Land Surveyor under the laws of the State of Minnesota.

Signature Jerome C. Wittstock
Benton County Surveyor
License No. 19552

Date: 7/12/2010

Heru Dept

Benton County Surveyor's Office
 Jerome C. Wittstock, County Surveyor
 Minnesota License No. 19552

Statement of Evidence:

A191

North Quarter Corner of Section 19, Township 38 North, Range 28 West, Granite Ledge Township, 4th Principal Meridian, Benton County, Minnesota.

1855 Original US General Land Office survey set a wood post at this location and bearing trees were recorded.

10" Bur Oak	S 65 W	20 links
12" Sugar	N 33 W	41 links

1880 County Surveyor's Record Book 2, page 306, contains a survey by Frank Sanders for a town road run north to the North ¼ corner of Section 18 and south 16.84 chains on ¼ line to state road.

1937 County Engineer's notebook No. 143 contains a road survey by H. G. Elletson for SAR No. 12. Notes show road survey run west to east on section line, but road never built. Corner is shown as a spike in center of north-south road with fence line west with ties:

F. P.	NW	24.4'
F. P.	SW	29.7'
F. P.	SE	16.2'
14" Elm Stp	NE	41.75'

Stationing gives distances of 2265.9 feet to the NW corner and 2700.0 feet to the NE corner of Section 19.

1948 County Engineer's Notebook 167 contains road survey along north line of Section 19 (same stationing as 1937 notes). Road never built. Corner is shown marked by a hub with same ties. Delta angle of 0-49' left is given (running west to east).

2004 Westwood Professional Services, Inc. found a ¾ " iron pipe in north-south road and in line with field line west. Distance south to Daisy Road checked with 1880 survey. Measured 2266.84 feet to the NW corner and 2700.58 feet to the NE corner, which checked with 1937 survey. Measured delta angle is 0-43-48 left, which checked with 1948 survey. Accepted found pipe as marking the obliterated corner position.

County Coordinates obtained by GPS
 NAD 83 (1996 Adjustment)
 N- 180146.672
 E- 544468.878

2010 The Benton County Surveyor's Office found the ¾" iron pipe. The 2004 coordinates were verified and reference ties were taken.