

A 361596

Certified, Filed and or Recorded on
Nov. 06, 2008 AT 08:48AM

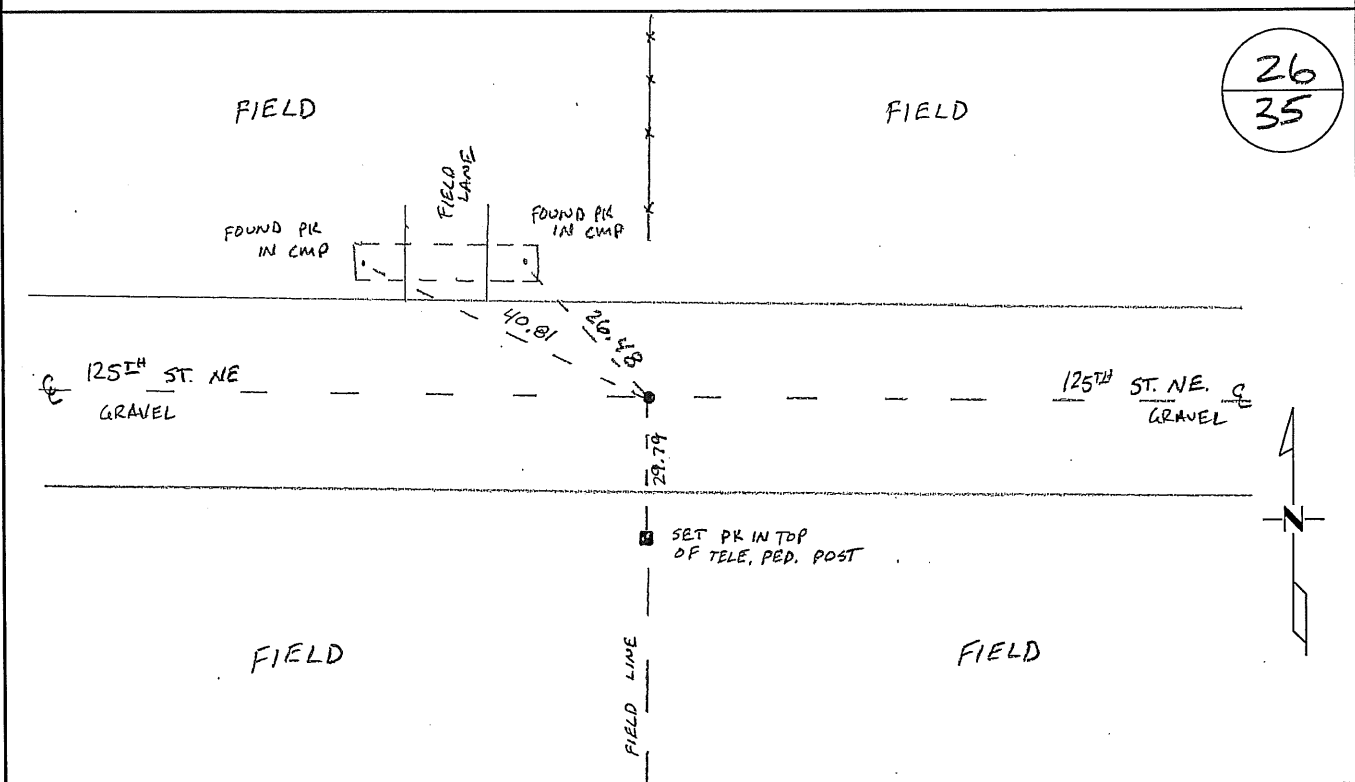
Signed: CK
MARILYN J NOVAK G V
BENTON COUNTY MINNESOTA
MARILYN J NOVAK
COUNTY RECORDER

CERTIFICATE OF LOCATION OF GOVERNMENT CORNER

NORTH QUARTER Corner of Section 35, Township 38N, Range 28W
4TH Principal Meridian, State of Minnesota, County of Benton

At the corner location shown on the sketch:

- On 10/16/08 found a CAST IRON MONUMENT DOWN 0.4'
- left monument as found lowered monument removed monument (explain)
- On _____ placed an _____



Statement of evidence for this corner location is on back of this page.

I hereby certify that this document was researched and prepared by me or under my direct supervision and that I am a licensed Land Surveyor under the laws of the State of Minnesota.

Signature Jan W. Oly
Deputy Benton County Surveyor
License No. 45872

Date: 11/03/2008

Benton County Surveyor's Office
 Jason W. Oberg, Deputy County Surveyor
 Minnesota License No. 45872

Statement of Evidence:

A351

North Quarter Corner of Section 35, Township 38 North, Range 28 West, Granite Ledge Township, 4th Principal Meridian, Benton County, Minnesota.

1855 Original US General Land Office survey set a wood post at this location and bearing trees were recorded.

9" Sugar	S 29 1/2 W	48 links
11" Sugar	N 42 1/2 E	22 links

2001 Westwood Professional Services, Inc. found a 1/2 iron monument capped RLS #23002 at the intersection of the centerline of 125th Street NE (running east and west) and occupation from the north. Removed and set cast iron monument and established reference ties.

*(NOTE: THE ABOVE CAST IRON WAS NOT SET IN
 THE CORRECT LOCATION NEEDS TO BE MOVED!)*

2003 It appears the CIM was attempted to be set at the lost position. It should be set at the obliterated position in center of east-west road and fence line north.

County Coordinates to CIM-**DO NOT USE!**

NAD 83 (1996 Adjustment)

N- 169622.883

E- 565592.048

County Coordinates to Obliterated Position

NAD 83 (1996 Adjustment)

N- 169622.591

E- 565603.615

2008 The County Surveyor's Office searched and found a cast iron monument near the Obliterated Position as reported in above in 2003. The cast iron monument falls on line with a field line to the south, a fenceline to the north and along the centerline of an east-west gravel road (125th St. NE). The Surveyor accepts the Obliterated Position and set ties to same.

County Coordinates to cast iron monument using GPS

NAD 83 (1996 Adjustment)

N- 169622.624

E- 565603.560