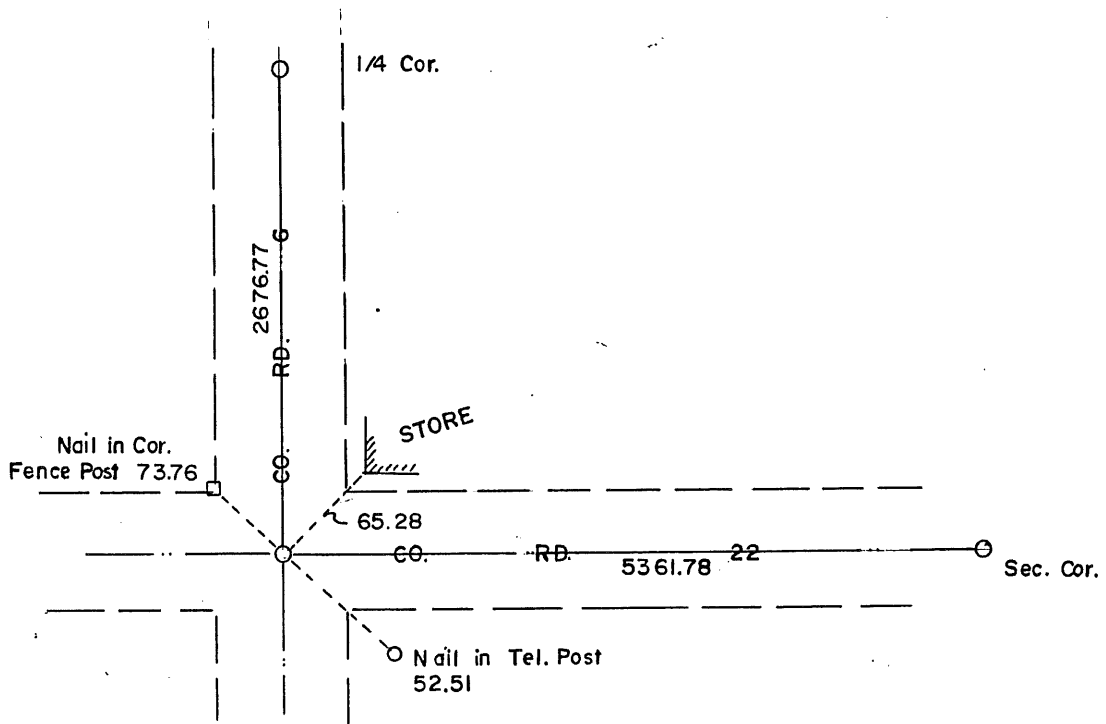


CERTIFICATE OF LOCATION OF GOVERNMENT CORNER

I hereby certify that on the 28th day of July, 1983
 I did find _____ the Northeast corner of Section 7,
Twp. 38, Rg. 28, Benton County, Minnesota, which
 was evidenced by a 3/4 inch iron pin at the intersection
of the center lines of two County Roads North and
South and East and West.

I further certify that in order to perpetuate said corner I did
 at the exact location thereof place a permanent marker consisting
 of Benton County Cast Iron Monument and that
 I did establish witness or reference monuments as shown below:



173443

I hereby certify that the
 above is true and correct
 and that I am a registered
 Land Surveyor under the laws
 of the State of Minnesota.

William J. L...

Minn. Registration No. _____

Office of the County Recorder,
Benton County, Minn.

I hereby certify that the within
 instrument was filed for record
 in this office on the 16th day of
May, 1985 at 3 PM

Alice Engelmeier
 County Recorder

By _____ Deputy.

This pin probably set by Benton County during construction
 5/28/83
 WJL
 3/28