

# CERTIFICATE OF LOCATION OF GOVERNMENT CORNER

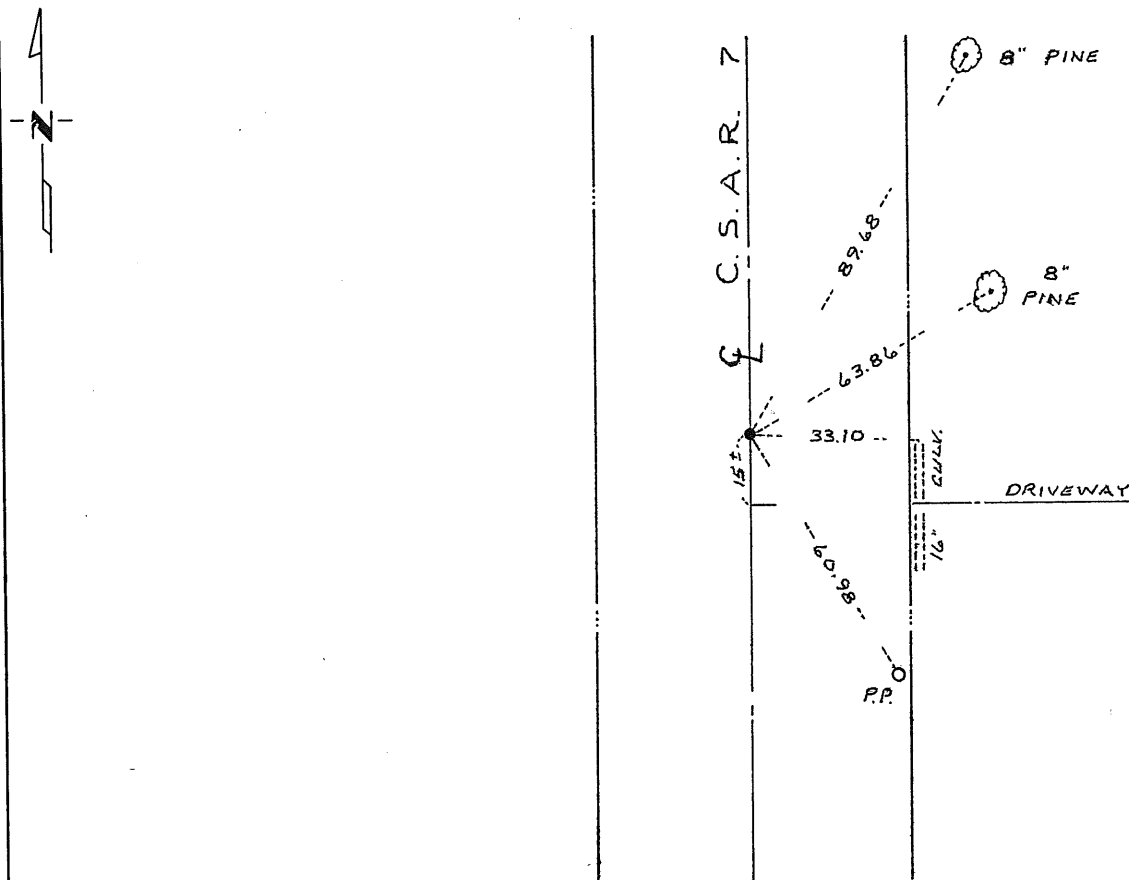
Northeast Corner of Section 16, Township 38, Range 28, 4th P.M.

STATE OF MINNESOTA, County of Benton

At the corner location shown on the sketch:

- On 3/29/83 found a 1/2 inch iron rod in center line of County Road north-south  
DATE  
 left monument as found,  lowered monument,  removed monument (explain)
- On 11/16/83 placed a Benton County cast iron monument over 1/2 inch iron rod  
DATE

### SKETCH OF REFERENCE TIES



Statement of evidence relative to this corner location is on back of page.

I hereby certify that this document and the data contained herein was prepared by me or under my direct supervision.

David P. Regan 1/3/84  
SIGNATURE DATE

Registration No. 12236

- Land Surveyor,  Professional Engineer
- County Surveyor,  County Engineer

*County Recorder*  
 OFFICE OF THE REGISTER OF DEEDS  
 County of Benton

I hereby certify that this document was filed in the Reg. of Deeds office at 4 P.M. on the 11th day of January A.D., 1984

Register of Deeds F.L. Johnson

By \_\_\_\_\_, Deputy

DOCUMENT NO. 167994