

7-13

A 375361

Certified, Filed and or Recorded on
July 13, 2010 AT 04:14PM

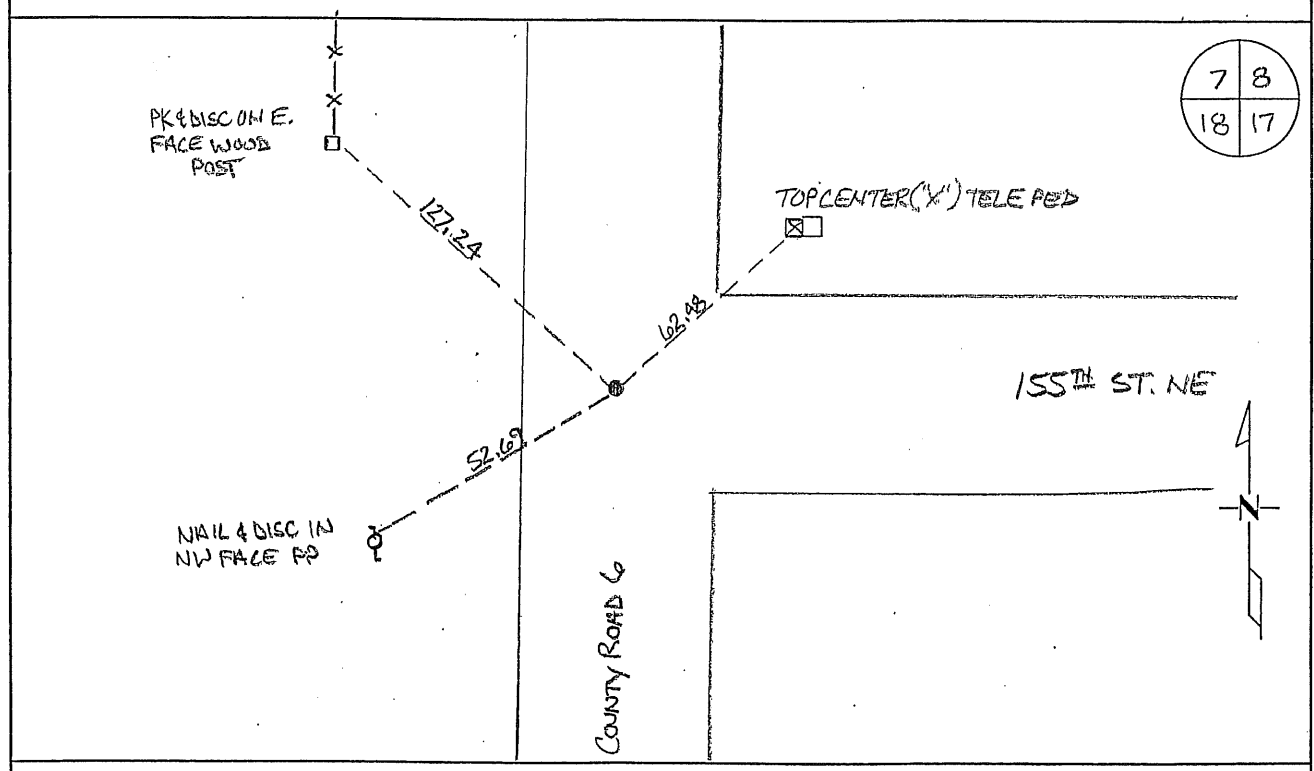
Signed: CK
MARILYN J NOVAK G V I
BENTON COUNTY MINNESOTA
MARILYN J NOVAK
COUNTY RECORDER

CERTIFICATE OF LOCATION OF GOVERNMENT CORNER

NORTHEAST Corner of Section 18, Township 38, Range 28
4TH Principal Meridian, State of Minnesota, County of Benton

At the corner location shown on the sketch:

- On 07/09/10 found a CAST IRON MONUMENT
- left monument as found lowered monument removed monument (explain)
- On _____ placed an _____



Statement of evidence for this corner location is on back of this page.

I hereby certify that this document was researched and prepared by me or under my direct supervision and that I am a licensed Land Surveyor under the laws of the State of Minnesota.

Signature Jerome C. Wittstock
Benton County Surveyor
License No. 19552

Date: 7/12/2010

Hwy Dept

Benton County Surveyor's Office
 Jerome C. Wittstock, County Surveyor
 Minnesota License No. 19552

Statement of Evidence:

A182

Northeast Corner of Section 18, Township 38 North, Range 28 West, Granite Ledge Township,
 4th Principal Meridian, Benton County, Minnesota.

1855 Original US General Land Office survey set a wood post at this location and bearing trees were recorded.

16" Elm	N 87 E	14 links
12" Elm	S 64 W	23 links

1913 County Surveyor's Record Book 2, page 306, shows notes from a town road survey done on by M.J. Cleveland between Sections 8 and 17. He found a stake at the corner location and set a new stake and an iron pin with the following new bearing trees.

14" Elm	S 78 1/2 E	64 1/2'
10" Ash	S 76 1/2 W	88 1/2'

1933 County Engineer's notebook No. 68 for SAR 6 shows hub and iron at corner with ties:

10" Poplar	NE	49.5'
stump	SE	67.0'

Stationing to PI (corner) is 209+46.1 with a delta angle of 1-14' left. Notes show town road east.

1953 County Engineer's Notebook No. 196 contains a road survey for SAR 6 running from south to north on section line. Corner is shown marked by an iron and hub in center of road with town road east. Same ties as 1954 below.

1953 County Surveyor's Record Book 2, page 334, shows Highway notes referring to a hub and iron with the following ties.

24" Elm	NE	109.7
P.P.	SW	52.6

Highway stationing to PI (corner) is 344+57.1 with a deflection angle of 1-07 left.

Other reference tie to a hub and iron:

10" Poplar	NE	49.5
------------	----	------

2001 Westwood Professional Services, Inc. found a RR spike over an angle iron and the intersection of the centerlines of County Road 6 (running north and south) and 155th Street NE (running east). Westwood removed the RR spike and set a cast iron monument over the angle iron and established reference ties. Tie to PP SW fit 1953 ties.

2010 The Benton County Surveyor's Office found the CIM set in 2001 over the found angle iron. The distance south fits within a foot of the 1933 and 1953 distances and the distance north fits 1933 distance flat and the 1953 distance within 1.5 feet to the east quarter of Section 7. Since the found CIM fits the found angle iron, distances north and south and the 1953 PP tie, it is accepted as marking the obliterated corner position and reference ties were taken.

County Coordinates
 NAD 83 (1996 Adjustment)
 N-185385.485
 E-547082.644