

CERTIFICATE OF LOCATION OF GOVERNMENT CORNER

NORTHEAST

Corner of Section 21, Township 38, Range 28

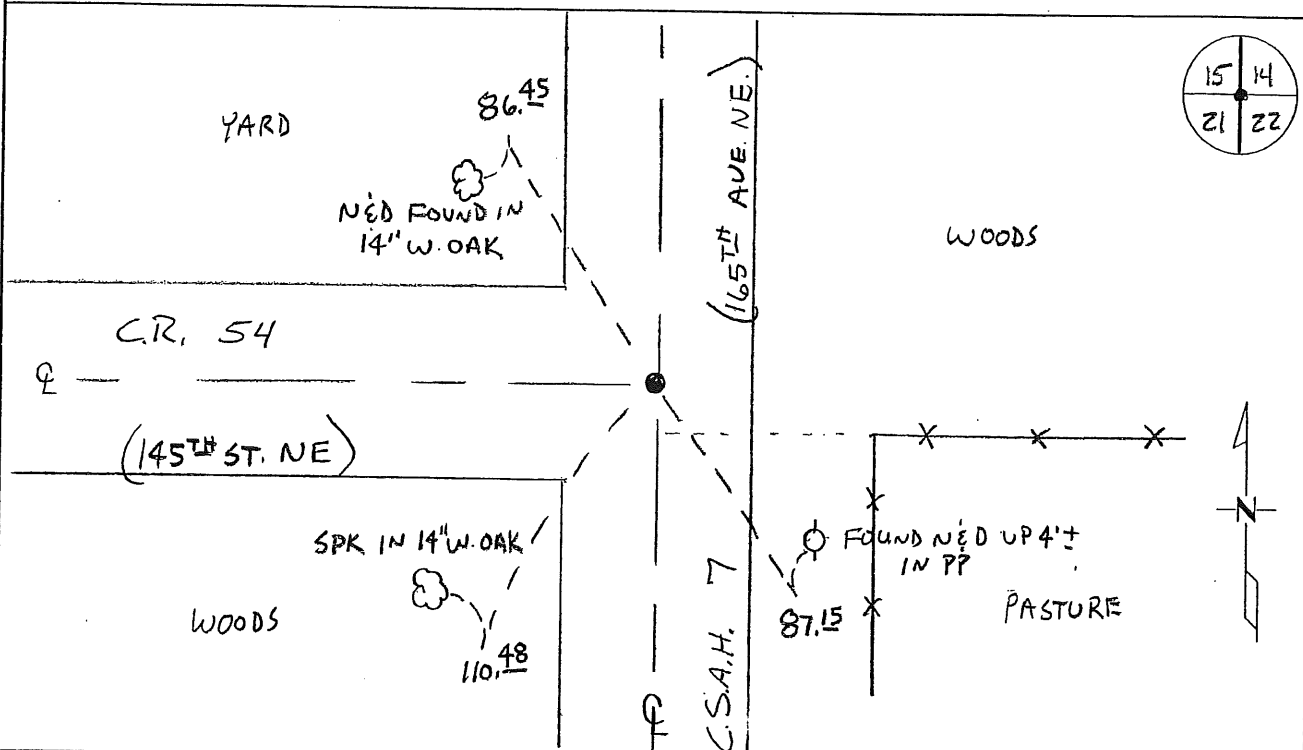
4TH Principal Meridian, State of Minnesota, County of Benton

At the corner location shown on the sketch:

On 11-17-08 found a CAST IRON MONUMENT

left monument as found lowered monument removed monument (explain)

On _____ placed an _____



Statement of evidence for this corner location is on back of this page.

I hereby certify that this document was researched and prepared by me or under my direct supervision and that I am a licensed Land Surveyor under the laws of the State of Minnesota.

Signature [Handwritten Signature]
Deputy County Surveyor
License No. 43932

Date: 12/17/08

Benton County Surveyor's Office
Chris Hogle, Deputy County Surveyor
Minnesota License No. 43932

Statement of Evidence:

A212

Northeast Corner of Section 21, Township 38 North, Range 28 West, Granite Ledge Township, 4th Principal Meridian, Benton County, Minnesota.

- 1855 Original US General Land Office survey set a wood post at this location and bearing trees were recorded.
16" Birch N 36 W 13 links, 14" Birch N 82 1/2 E 25 links
- 1924 County Highway plans by Paul Zeese show corner with ties:
6" Bass SW 58.8 6" Bass NE 93.8
- 1930? County Engineer's Notebook No. 79 contains survey by H. G. Elletson for cartway running north from this corner. Shows ties:
6" Bass SW 58.8 6" Poplar NE 93.8
- 1948 County Engineer's Notebook 167 contains road survey for SAR No. 12. Notes show corner being a 2" x 2" hub with ties:
10" W. Oak NW 86.3' 10" W. Oak SW 110.1'
- 1960 County Engineer's Notebook No. 231 contains survey for CSAH 7 running south to north on section line. Notes show iron in center of road with right of way for CH 54 east and west. Ties same as listed below in 1963.
- 1963 County Surveyor's Record Book 2, page 350 contains ties to an iron monument as follows:
10" W. Oak NW 86.65 10" W. Oak SW 110.7
PP SE 86.75
- 1983 David Regan, LS 12236, found a 1/2 " solid rod in center of north-south County road and east-west township road and set a CIM over the rod. He filed Certificate of Location (Doc. No. 167992).
- 1995 Comstock and Davis performed GPS work under contract with Benton County and Coordinates Obtained by GPS NAD 83 (1986 Adjustment) to a CIM:
N- 180327.419
E- 557588.646
- 2001 Westwood Professional Services, Inc. found a spike in the center of north-south County road and township road west. Note: There is no road east as shown on Regan's Certificate.
- 2002 Westwood Professional Services, Inc. checked for old ties and found the two oaks referenced in 1963, which fit the spike. Contacted MN/DOT for possible information on this corner, they could not locate the project file, but had coordinates as follows:
County Coordinates
NAD 83 (1986 Adjustment)
N- 180327.314
E- 557588.742
- 2008 Westwood Professional Services, Inc. found a CIM at the intersection of the centerlines of County Road 54 (running west) and C.S.A.H. No 7 (running north/south). Tie trees were found from both the 1948 and 1963 ties and fit the CIM very well. CIM is accepted as marking the obliterated position for this corner.
County Coordinates obtained by GPS:
NAD 83 (1996 Adjustment)
N- 180327.607
E- 557588.461

12-24

A 362619

Certified, Filed and or Recorded on
Dec. 26, 2008 AT 10:36AM

Signed: CK
MARILYN J NOVAK B V I
BENTON COUNTY MINNESOTA
MARILYN J NOVAK
COUNTY RECORDER

DOCUMENT COVER SHEET

Document Name: **GOVERNMENT CORNER**

BENTON COUNTY OF

THE PUBLIC

Document Date: **12/17/2008**

This cover sheet is being attached to this document to provide room for recording information and is considered part of this document

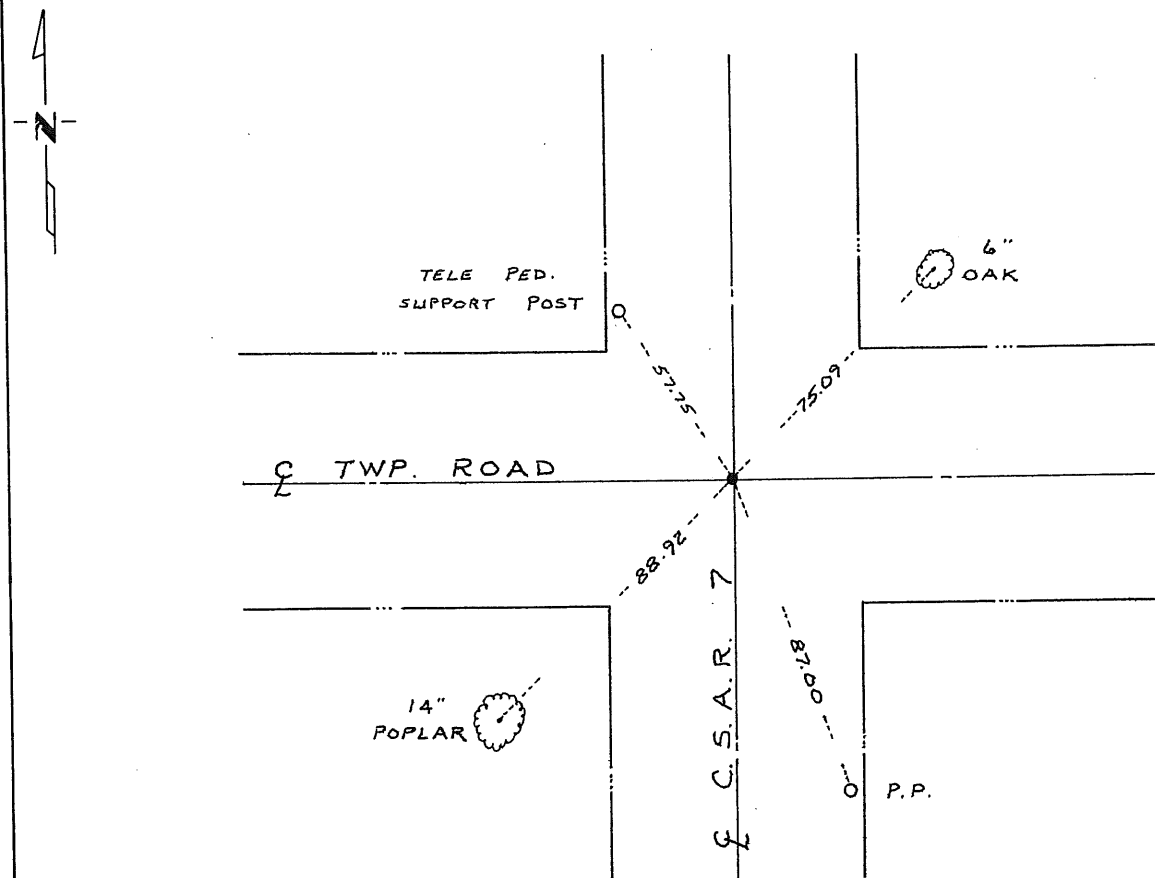
CERTIFICATE OF LOCATION OF GOVERNMENT CORNER

Northeast Corner of Section 21, Township 38, Range 28, 4th P.M.
STATE OF MINNESOTA, County of Benton

At the corner location shown on the sketch:

- On 11/16/83 found a 1/2 inch solid iron rod in center line of County Road north-south and Township Road east-west
 left monument as found, lowered monument, removed monument (explain)
- On 11/16/83 placed a Benton County cast iron monument over rod

SKETCH OF REFERENCE TIES



Statement of evidence relative to this corner location is on back of page.

I hereby certify that this document and the data contained herein was prepared by me or under my direct supervision.

David P. Ryan 1/3/84
SIGNATURE DATE

Registration No. 12236
 Land Surveyor, Professional Engineer
 County Surveyor, County Engineer

OFFICE OF THE County Recorder REGISTER OF DEEDS
County of Benton

I hereby certify that this document was filed in the Reg. of Deeds office at 4 P.M. on the 11th day of January A.D., 1984

Register of Deeds F.H. Johnson
By _____, Deputy
DOCUMENT NO. 167992