

Index No. \_\_\_\_\_

# CERTIFICATE OF LOCATION OF GOVERNMENT CORNER

NORTHEAST Corner of Section 34, Township 36, Range 29, 4th P.M.

STATE OF MINNESOTA, County of BENTON

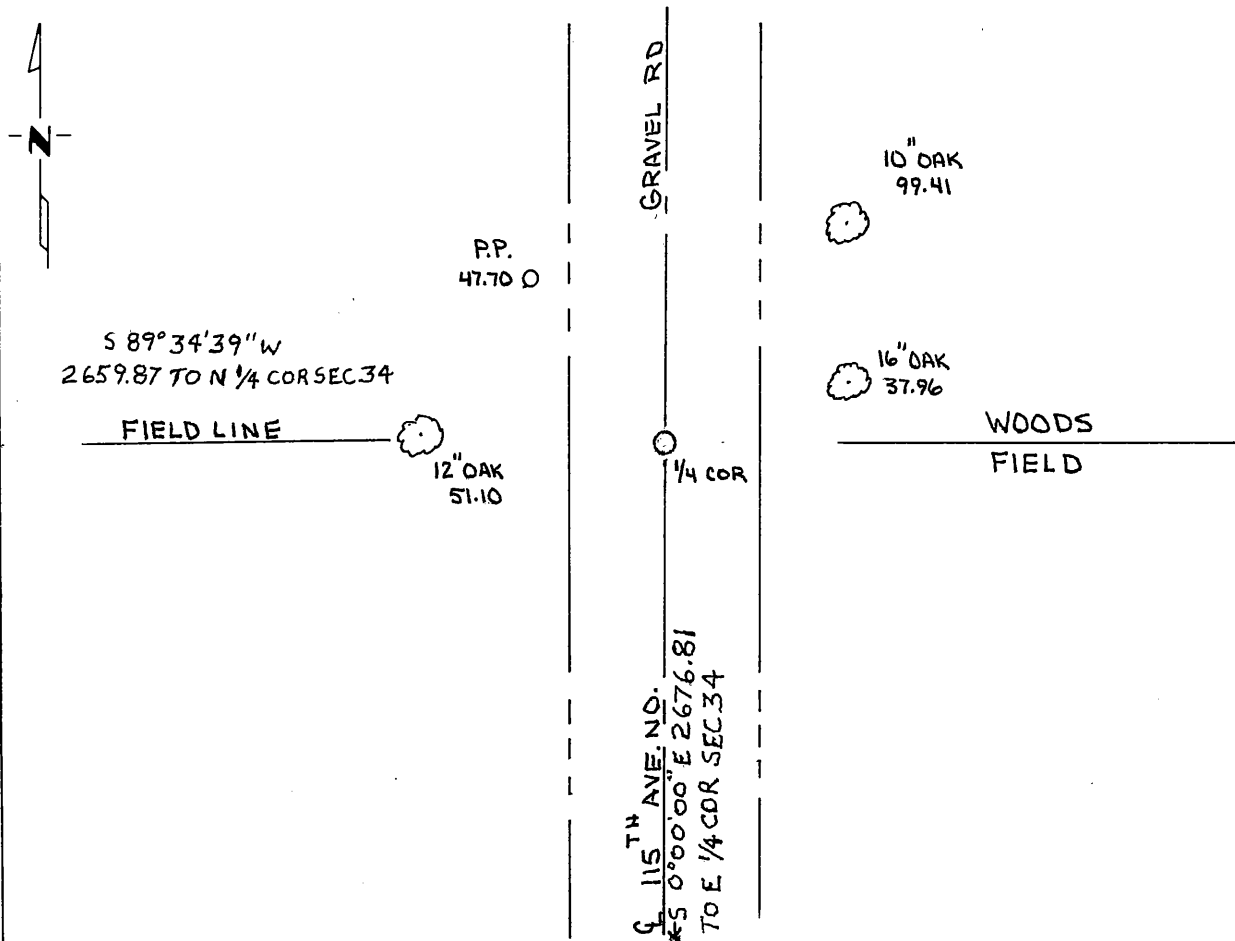
At the corner location shown on the sketch:

On \_\_\_\_\_ found a \_\_\_\_\_  
DATE

left monument as found,  lowered monument,  removed monument (explain)

On 9-18-90 placed a CAST IRON MONUMENT  
DATE

## SKETCH OF REFERENCE TIES



Statement of evidence relative to this corner location is on back of page.

I hereby certify that this document and the data contained herein was prepared by me or under my direct supervision.

William J. Jensen 2/14/91  
SIGNATURE DATE

Registration No. 9394

- Land Surveyor,  Professional Engineer
- County Surveyor,  County Engineer

OFFICE OF THE REGISTER OF DEEDS  
County of \_\_\_\_\_

I hereby certify that this document was filed in the Reg. of Deeds office at \_\_\_\_\_ .M. on the \_\_\_\_\_ day of \_\_\_\_\_ A.D., 19 \_\_\_\_\_

Register of Deeds \_\_\_\_\_

By \_\_\_\_\_, Deputy

DOCUMENT NO. \_\_\_\_\_

Statement of Evidence:

Benton County Records showed no reference to this corner other than U.S. Government Survey.

On 9-18-90 searched the area and found no evidence of an existing monument. Placed a cast iron monument at the centerline of Township Road (115th Ave. No.) and field line to the West and woods-field line to the East. Measurement to the North Quarter Corner of Section 34 supports this location.

201532

OFFICE OF  
BENTON COUNTY RECORDER  
BENTON COUNTY, MN  
CERTIFIED TO BE FILED  
AND/OR RECORDED ON

FEB 28 12 24 PM '91

ALICE C. ENGELMEYER  
COUNTY RECORDER

BY *Jed* DEPUTY