

Certified, Filed and or Recorded on  
Dec. 16, 2008 AT 01:46PM

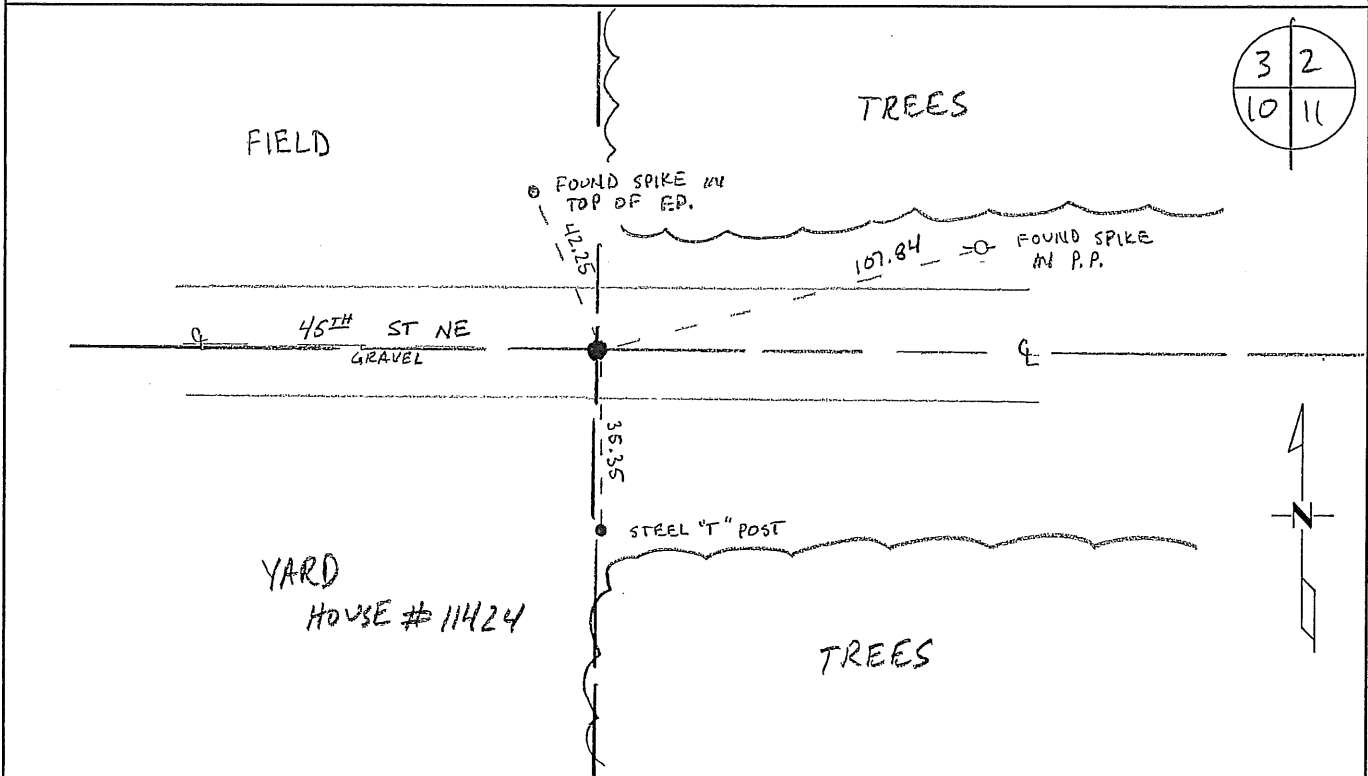
Signed: BW  
MARILYN J NOVAK B V ✓  
BENTON COUNTY MINNESOTA  
MARILYN J NOVAK  
COUNTY RECORDER

# CERTIFICATE OF LOCATION OF GOVERNMENT CORNER

NORTHEAST Corner of Section 10, Township 36N, Range 29W  
4TH Principal Meridian, State of Minnesota, County of Benton

At the corner location shown on the sketch:

- On 10/14/08 found a 1" STEEL PIN DOWN 0.4'
- left monument as found       lowered monument       removed monument (explain)
- On \_\_\_\_\_ placed an \_\_\_\_\_



Statement of evidence for this corner location is on back of this page.

I hereby certify that this document was researched and prepared by me or under my direct supervision and that I am a licensed Land Surveyor under the laws of the State of Minnesota.

Signature Jan V. Oly  
Deputy Benton County Surveyor  
License No. 45872

Date: 11/06/2008  
PAGE 1 OF 2

Benton County Surveyor's Office  
 Jason W. Oberg, Deputy County Surveyor  
 Minnesota License No. 45872

**Statement of Evidence:****K102**

Northeast Corner of Section 10, Township 36 North, Range 29 West, St. George Township, 4<sup>th</sup> Principal Meridian, Benton County, Minnesota.

1855 Original US General Land Office survey set a wood post with bearing trees:

10" Bur Oak	N 64 E	34 links
14" Aspen	S 19 ½ W	17 links

A line tree was noted as a 11" Elm West 17.80 chains.

1929 County Surveyor's Record Book 1, page 89, and Record Book A, Map No. 50, shows H.G. Elletson surveyed Section 3, doing a complete section subdivision with all 1/16<sup>th</sup> corners set. The survey notes an iron monument with the following reference ties:

Twin Elm	North	42.8
TP	SW	79.6

He notes a distance of 2627.8 feet to the North ¼ corner Sec 10 and a distance of 2589.4 feet to the East ¼ corner Sec 3. (Notes in Notebook 48)

1977 Paul Wellen, LS 10461, set a 1" steel pin at the centerline of an east/west road. He filed a Certificate of Location (#147245).

2004 Found 1" iron pin in center of east-west road.  
 County Coordinates Obtained by GPS  
 NAD 83 (1996 Adjustment)  
 N- 127171.809  
 E- 532085.592

2008 The County Surveyors Office searched and found a 1" steel pin approximately 0.5' below the surface of the east-west gravel road (45<sup>th</sup> Street N.E.). Position agrees with 1929 distances (2629.96 ft. & 2588.08 ft vs. 2627.8 ft. & 2589.4 ft.). The Surveyor accepts the monument as marking the obliterated position and set new ties.

County Coordinates Obtained by GPS  
 NAD 83 (1996 Adjustment)  
 N- 127171.885  
 E- 532085.597

# CERTIFICATE OF LOCATION OF GOVERNMENT CORNER

Northeast \_\_\_\_\_ Corner of Section 10, Township 36, Range 29, 4th P.M.

STATE OF MINNESOTA, County of Benton

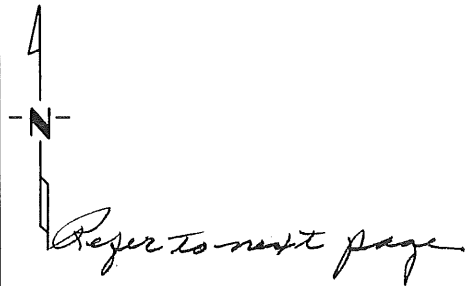
At the corner location shown on the sketch:

On 6-23-77 found a 1" Steel Pin (omit)  
DATE

left monument as found,  lowered monument,  removed monument (explain)

On 6-23-77 placed a 1" Steel Pin  
DATE

## SKETCH OF REFERENCE TIES

  
Refer to next page

Statement of evidence relative to this corner location is on back of page. #147245

I hereby certify that this document and the data contained herein was prepared by me or under my direct supervision.

Paul E. Wellen 1/3/78  
SIGNATURE DATE

Registration No. 10461

Land Surveyor,  Professional Engineer

County Surveyor,  County Engineer

OFFICE OF THE REGISTER OF DEEDS

County of Benton

I hereby certify that this document was filed in the Reg. of Deeds office at 4 P: .M. on the 10th day of January A.D., 19 78

Register of Deeds F. A. Johnson

By A. E., Deputy

DOCUMENT NO. \_\_\_\_\_

# CERTIFICATE OF LOCATION OF GOVERNMENT CORNER

NORTHEAST Corner of Section 10, Township 36, Range 29, 4th P.M.

STATE OF MINNESOTA, County of BENTON

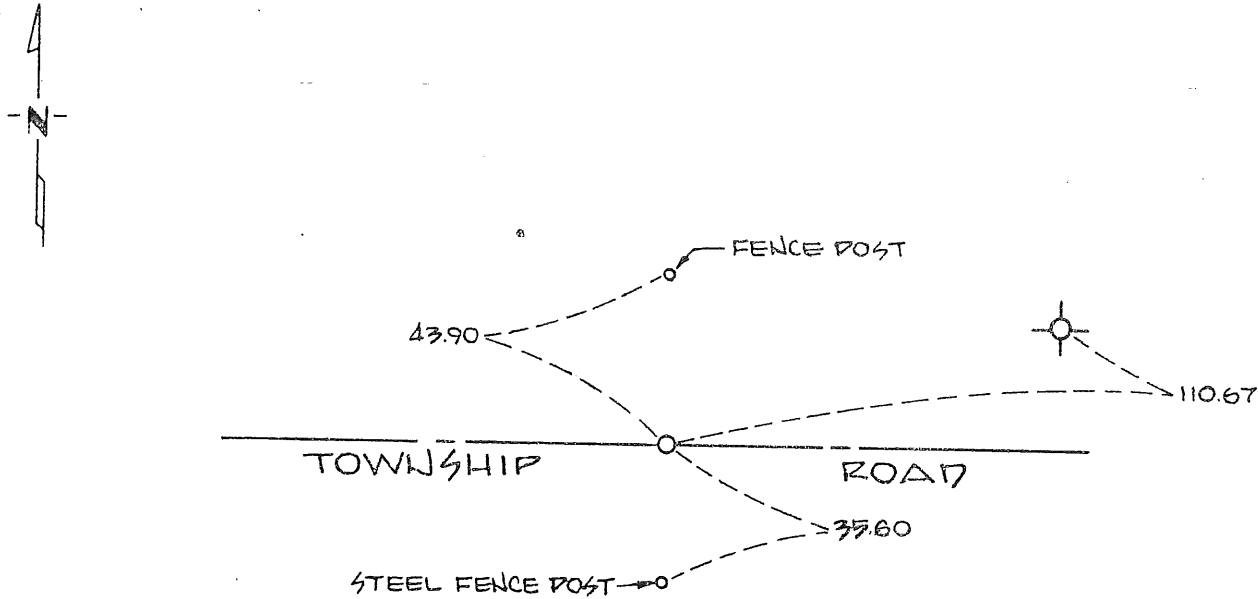
At the corner location shown on the sketch:

On 6-23-77 found a \_\_\_\_\_  
DATE

left monument as found,  lowered monument,  removed monument (explain)

On 6-23-77 placed a 1" STEEL PIN  
DATE

## SKETCH OF REFERENCE TIES



Statement of evidence relative to this corner location is on back of page. 147245

I hereby certify that this document and the data contained herein was prepared by me or under my direct supervision.

Paul Miller 11/3/78  
SIGNATURE DATE

Registration No. 10461

Land Surveyor,  Professional Engineer

## OFFICE OF THE REGISTER OF DEEDS

County of Bentonia

I hereby certify that this document was filed in the Reg. of Deeds office at 4:11 P.M. on the 10 day of Nov A.D., 19 78

Register of Deeds M. A. [unclear]

By A. H. [unclear] Deputy

# CERTIFICATE OF LOCATION OF GOVERNMENT CORNER

Northwest \_\_\_\_\_ Corner of Section 10, Township 36, Range 29, 4th P.M.

STATE OF MINNESOTA, County of Benton

At the corner location shown on the sketch:

On 6-23-77 found a Iron Monument  
DATE

left monument as found,  lowered monument,  removed monument (explain)

On \_\_\_\_\_ placed a \_\_\_\_\_  
DATE

## SKETCH OF REFERENCE TIES



Statement of evidence relative to this corner location is on back of page. #147246

I hereby certify that this document and the data contained herein was prepared by me or under my direct supervision.

Paul E. Wellen 1/3/78  
SIGNATURE DATE

Registration No. 10461

Land Surveyor,  Professional Engineer

County Surveyor,  County Engineer

OFFICE OF THE REGISTER OF DEEDS

County of Benton

I hereby certify that this document was filed in the Reg. of Deeds office at 4 P: .M. on the 10th day of January A.D., 19 78

Register of Deeds F. A. Johnson

By A. E., Deputy

DOCUMENT NO. \_\_\_\_\_