

Certified, Filed and or Recorded on
Oct. 14, 2008 AT 10:17AM

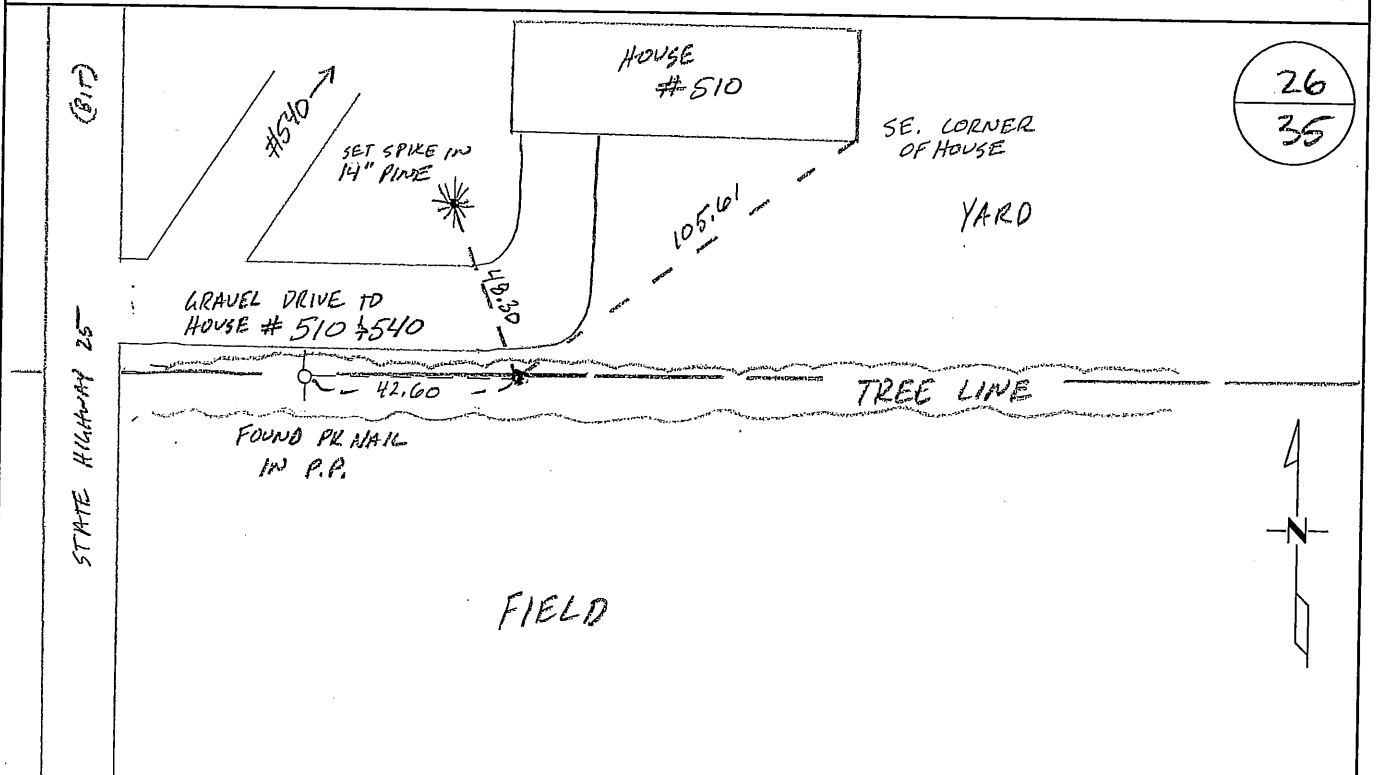
Signed: CK
MARILYN J NOVAK G V
BENTON COUNTY MINNESOTA
MARILYN J NOVAK
COUNTY RECORDER

CERTIFICATE OF LOCATION OF GOVERNMENT CORNER

NORTH QUARTER Corner of Section 35, Township 36N, Range 29W
4TH Principal Meridian, State of Minnesota, County of Benton

At the corner location shown on the sketch:

- On 10/10/08 found a CAST IRON MONUMENT
- left monument as found lowered monument removed monument (explain)
- On _____ placed on _____



Statement of evidence for this corner location is on back of this page.

I hereby certify that this document was researched and prepared by me or under my direct supervision and that I am a licensed Land Surveyor under the laws of the State of Minnesota.

Signature Jan W. Gley
Deputy Benton County Surveyor
License No. 45872

Date: 10-13-2008

Statement of Evidence:

K351

North Quarter Corner of Section 35, Township 36 North, Range 29 West, St. George Township, 4th Principal Meridian, Benton County, Minnesota.

1855 Original US General Land Office survey established corner marked by a wood post with bearing tree:

10" Bur Oak N 46 W 423 links

1960's MN/DOT alignment map for TH 25 shows corner assumed in intersection of roads north-south and west.

1979 Paul Wellen, LS 10461, set a cast iron monument at the centerline of roads north/south/west and a tree line east. He filed a Certificate of Location (#153088).

1995 Wellen survey information gives a distance of 2675.70 feet to the NW corner of Section 35.

2005 WSN found CIM and measured 2680.59 feet to the NW corner and 2663.24 feet to the NE corner. CIM accepted as marking the obliterated corner position.
 County Coordinates Obtained by GPS
 NAD 83 (1996 Adjustment)
 N- 105677.294
 E- 534898.959

2008 The County Surveyor's Office searched and found a cast iron monument as set by Wellen in 1979, along an east-west tree line. The Surveyor accepts the position as the best evidence. Ties were updated. Coordinates obtained by GPS agreed with those reported by WSN in 2005.

CERTIFICATE OF LOCATION OF GOVERNMENT CORNER

North Quarter _____ Corner of Section 35, Township 36, Range 29, _____ P.M.

STATE OF MINNESOTA, County of Benton

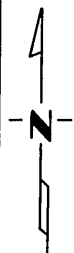
At the corner location shown on the sketch:

On _____ found a _____ was evidenced by the center line of old Benton
DATE
 County Road 10 and a tree line to the east.

left monument as found, lowered monument, removed monument (explain)

On _____ placed a _____ permanent marker consisting of Benton County
DATE
 Cast Iron Monument

SKETCH OF REFERENCE TIES



Refer to next page

Statement of evidence relative to this corner location is on back of page.

I hereby certify that this document and the data contained herein was prepared by me or under my direct supervision.

Paul E. Wellen
SIGNATURE DATE

Registration No. 10461

Land Surveyor, Professional Engineer

County Surveyor, County Engineer

County Recorder
 OFFICE OF THE ~~REGISTER OF DEEDS~~
 County of Benton

I hereby certify that this document was filed in
County Recorder
 the Reg. of Deeds office at 10 A: .M. on the
13th day of July A.D., 19 79
 County Recorder F. A. Johnson
~~Register of Deeds~~

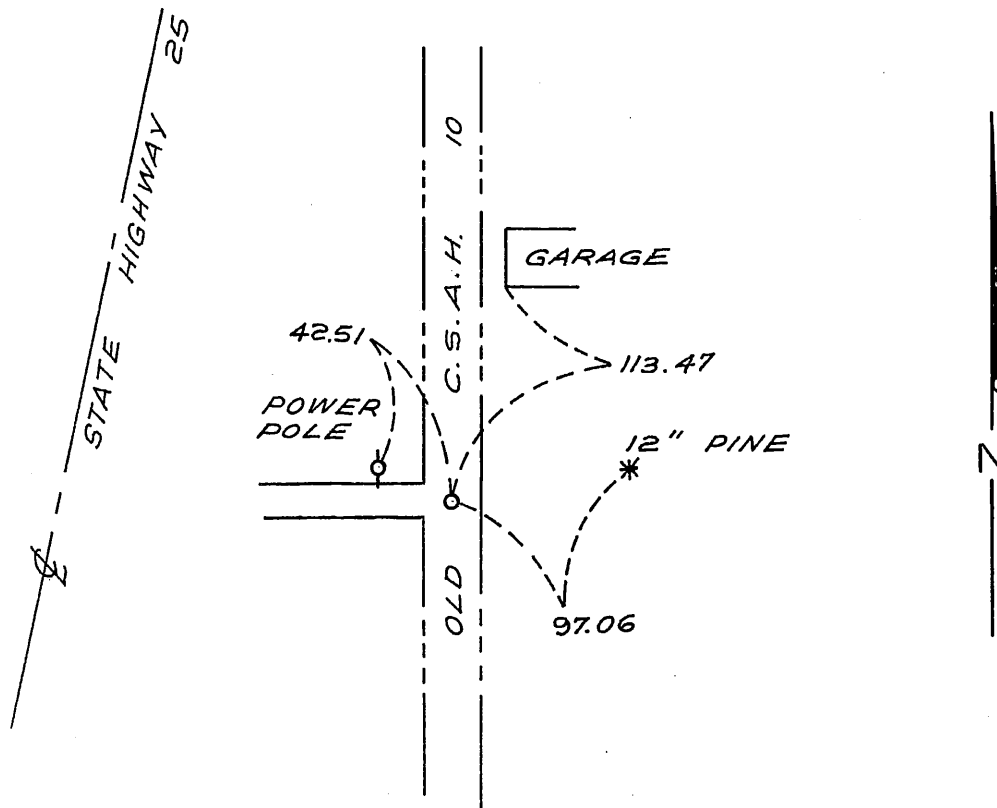
By _____, Deputy

DOCUMENT NO. 153088

CERTIFICATE OF LOCATION OF GOVERNMENT CORNER

I hereby certify that on the 23 day of May, 1979
I did Set the North Quarter corner of Section 35,
Twp. 36, Rg. 29, Benton County, Minnesota, which
was evidenced by the center line of old Benton County Road 10 and a tree
line to the east.

I further certify that in order to perpetuate said corner I did
at the exact location thereof place a permanent marker consisting
of Benton County Cast Iron Monument and that
I did establish witness or reference monuments as shown below:



I hereby certify that the above
is true and correct and that I am
a registered Land Surveyor under
the laws of the State of Minnesota.

Dan J. Miller

Minn. Registration No. 10461

153088

Office of the County Recorder,
Benton County, Minn.

I hereby certify that the within instrument
was filed for record in this office on the
13th day of July, 1979
at 10 A.M.

F.A. Johnson
County Recorder

By _____ Deputy.